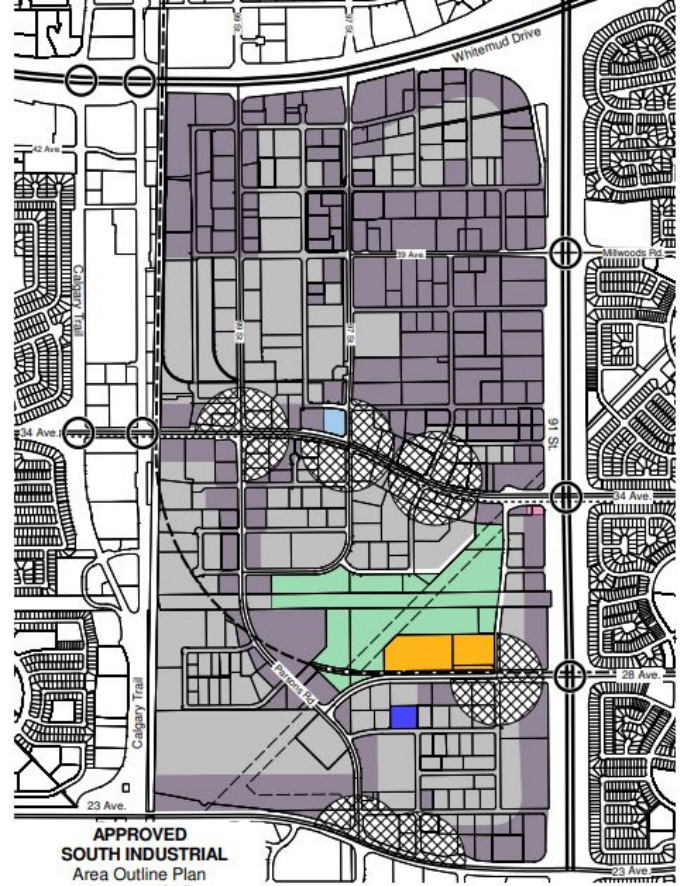


1 3.2 - South Industrial Area



APPROVED SOUTH INDUSTRIAL Area Outline Plan (as amended)

- | | | | |
|--|--|---|-----------------------------|
|  | Alternate Service Centre Locations |  | NUL Gate Station |
|  | High Standard Industrial Development (DC2) |  | LRT Station |
|  | High Standard Industrial Development (IL & IB) |  | Proposed Rapid Transit Line |
|  | Medium Industrial Development (IM) |  | Collector |
|  | Recreation Area |  | Proposed Interchange |
|  | Water Reservoir Site |  | Bikeway / Walkway |

Note: Location of collector roads and configuration of stormwater management facilities are subject to minor revisions during subdivision and rezoning of the neighbourhood and may not be developed exactly as illustrated.

2 3.2 - South Industrial Area

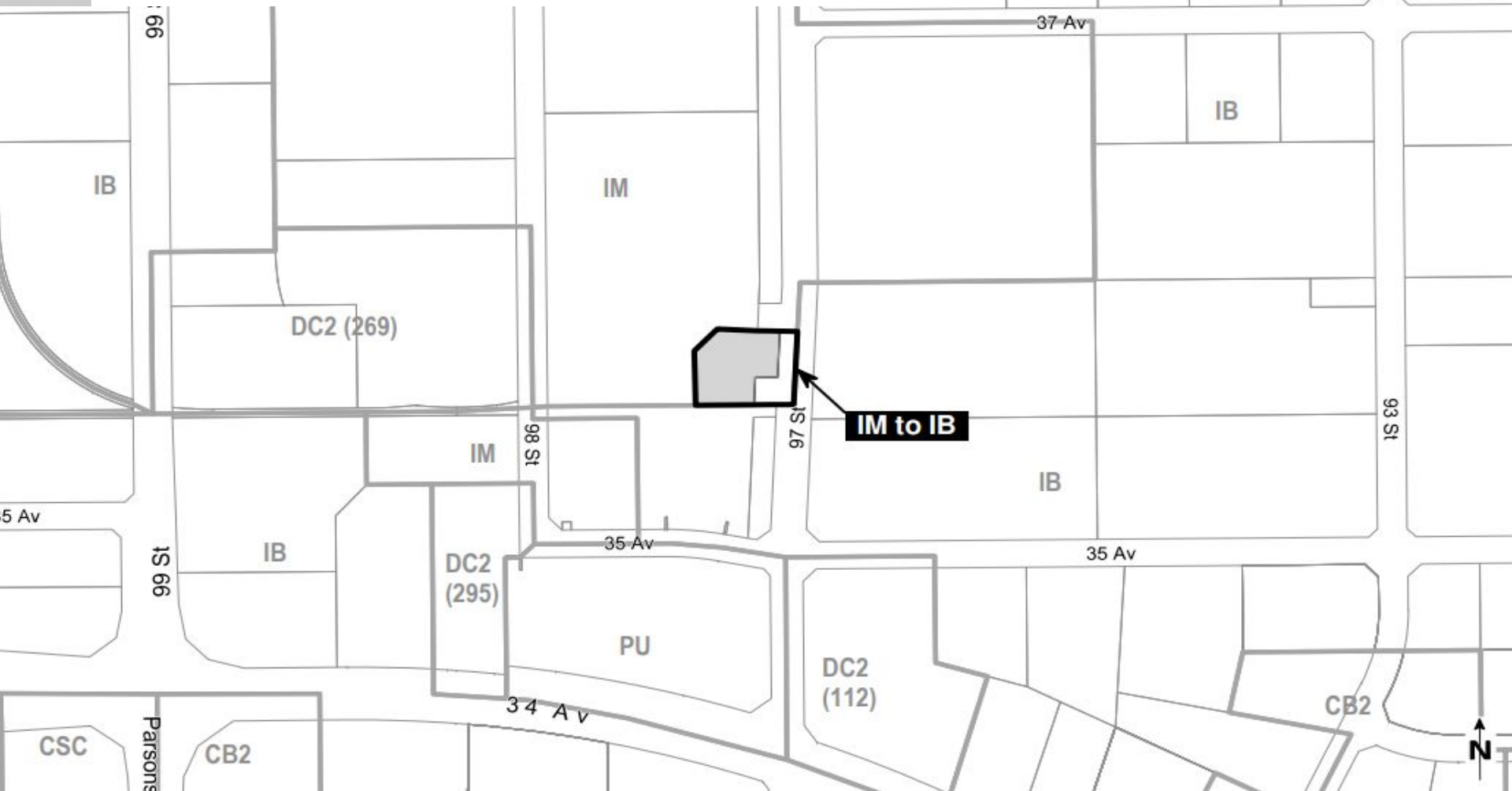


PROPOSED AMENDMENT TO THE SOUTH INDUSTRIAL Area Outline Plan (as amended)

- | | | | |
|--|---|---|-----------------------------|
|  | Alternate Service Centre Locations |  | NUL Gate Station |
|  | High Standard Industrial Development (DC2) |  | LRT Station |
|  | High Standard Industrial Development (L & IB) |  | Proposed Rapid Transit Line |
|  | Medium Industrial Development (IM) |  | Collector |
|  | Recreation Area |  | Proposed Interchange |
|  | Water Reservoir Site |  | Bikeway / Walkway |
| | |  | Amendment Boundary |

Location of collector roads and configuration of stormwater management facilities are subject to minor revisions during subdivision and rezoning of the neighbourhood and may not be identical to those shown.

3 3.3 - Strathcona Industrial Park



4 3.3 - Strathcona Industrial Park

