



Integrated Infrastructure Services

Building Great Neighbourhoods

Touch the Water and North Shore Promenades Project

Design Progress Update

Executive Committee

June 28, 2021

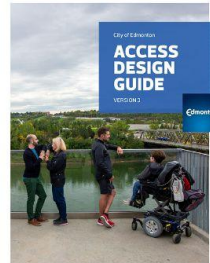
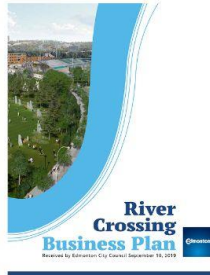
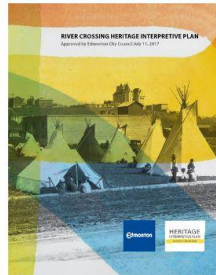
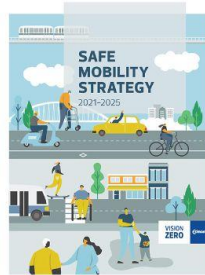
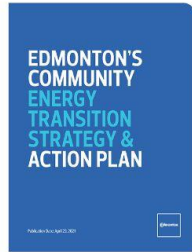
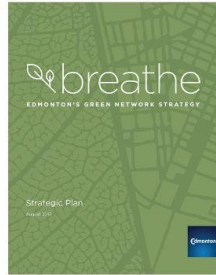
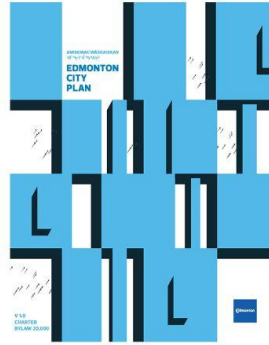
IIS00590

Project Purpose & Vision

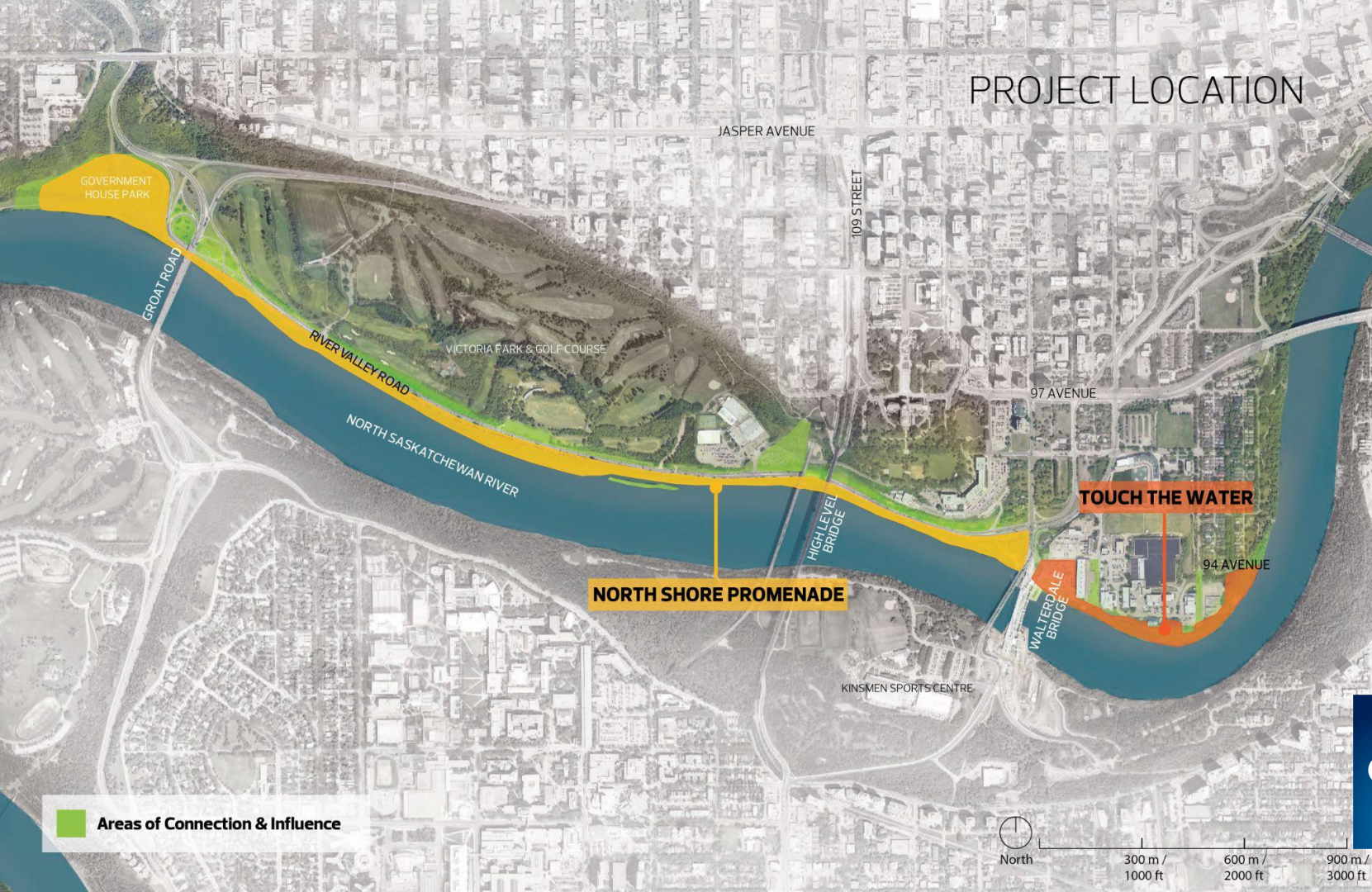
- River valley - Gathering place since time immemorial.
- To improve public access to & within central river valley.
- “Regional Destination”
 - Improved opportunities for:
 - Recreation
 - Heritage interpretation
 - Social gathering
 - Ecological restoration.



Strategic Alignment & Advancement



PROJECT LOCATION



JASPER AVENUE

109 STREET

97 AVENUE

TOUCH THE WATER

94 AVENUE

NORTH SHORE PROMENADE

KINSMEN SPORTS CENTRE

HIGH LEVEL
BRIDGE

WALTERDALE
BRIDGE

NORTH SASKATCHEWAN RIVER

RIVER VALLEY ROAD

GROAT ROAD

GOVERNMENT
HOUSE PARK

VICTORIA PARK & GOLF COURSE

Areas of Connection & Influence

Edmonton



300 m / 1000 ft 600 m / 2000 ft 900 m / 3000 ft

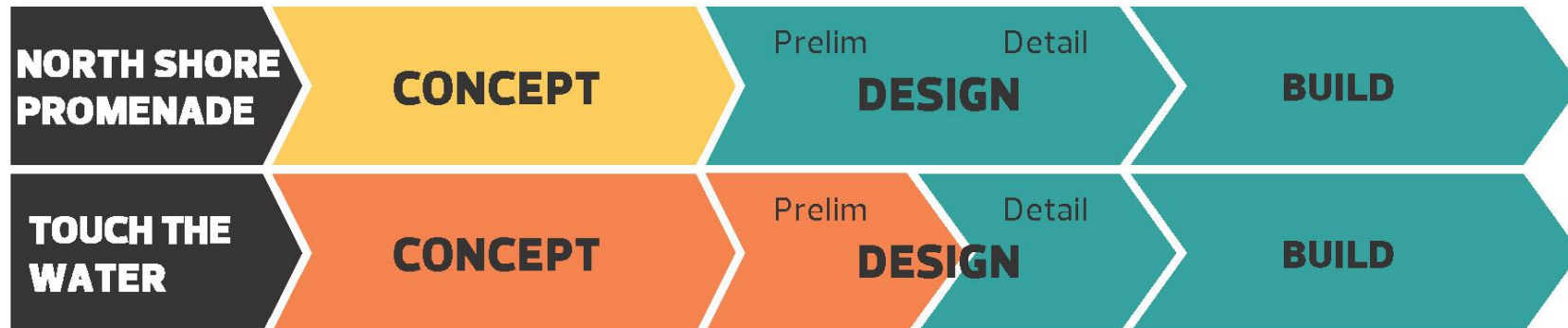


Approved Funding

Not Currently Funded

To Q2 2021

To Q4 2021



ENGAGEMENT STAGES

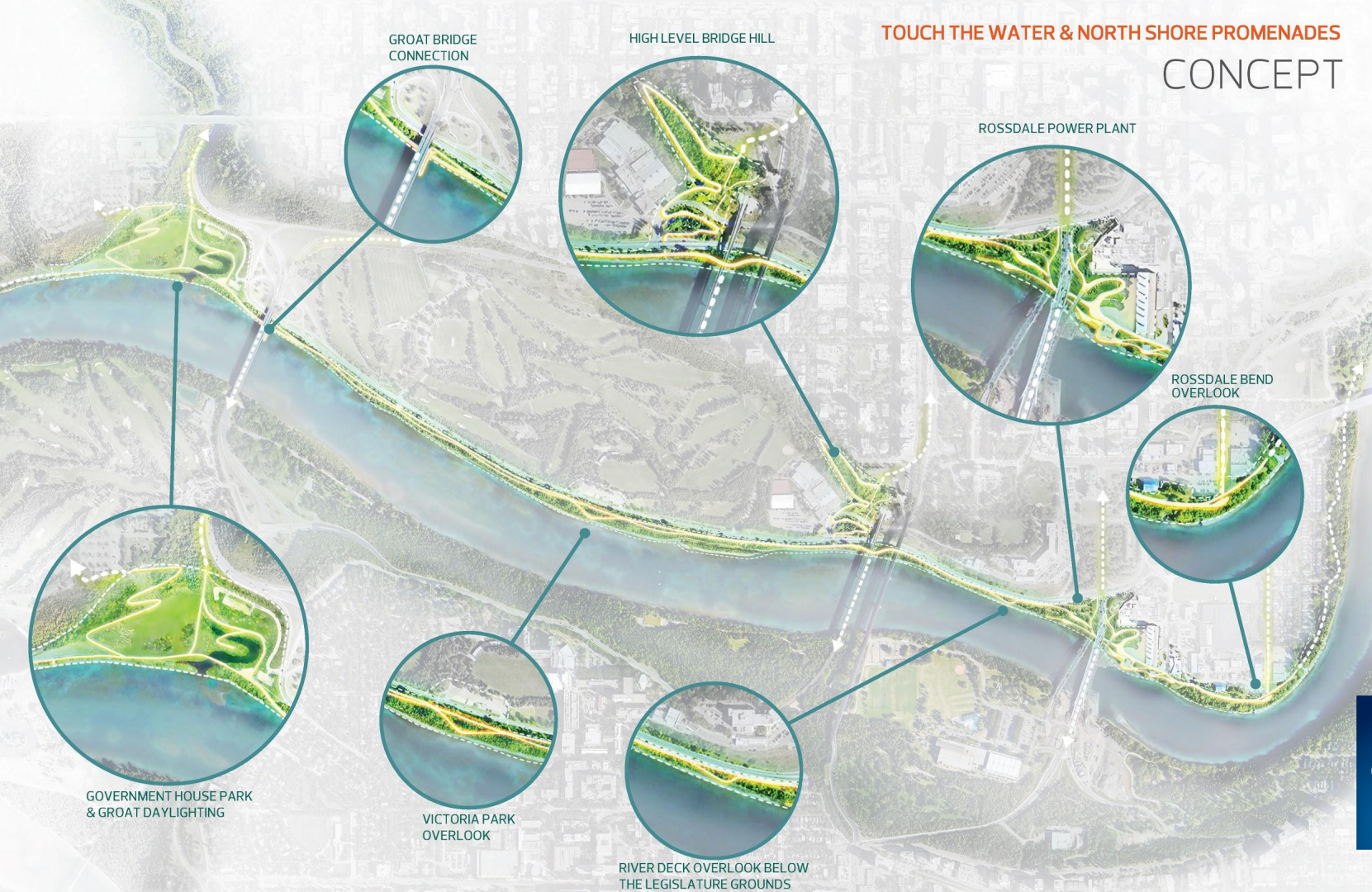
Stage 1
Vision

Stage 2
Options

Stage 3
Preliminary
Design

Edmonton

CONCEPT



CONCEPT



CONCEPT ILLUSTRATION | MAY 2021
Design by: DUB ARCHITECTS
STOSS
ISL ENGINEERING

HIGH LEVEL BRIDGE HILL

CONCEPT



CONCEPT ILLUSTRATION | MAY 2021
Design by: DUB ARCHITECTS
STOSS
ISL ENGINEERING

Edmonton

CONCEPT



GROAT BRIDGE CONNECTION

CONCEPT



CONCEPT ILLUSTRATION | MAY 2021
Design by: DUB ARCHITECTS
STOSS
ISL ENGINEERING



CONCEPT



Next Steps

- Preliminary Design Phase | Checkpoint 3: End of Q4 2021
 - Touch the Water Promenade
- Third Stage of Indigenous and Public Engagement
 - Summer 2021
- Project Delivery to be Evaluated for Consideration in 2023-26 Capital Budget

Thank You.

CONCEPT ILLUSTRATION | MAY 2021
Design by: DUB ARCHITECTS
STOSS
ISL ENGINEERING

Edmonton