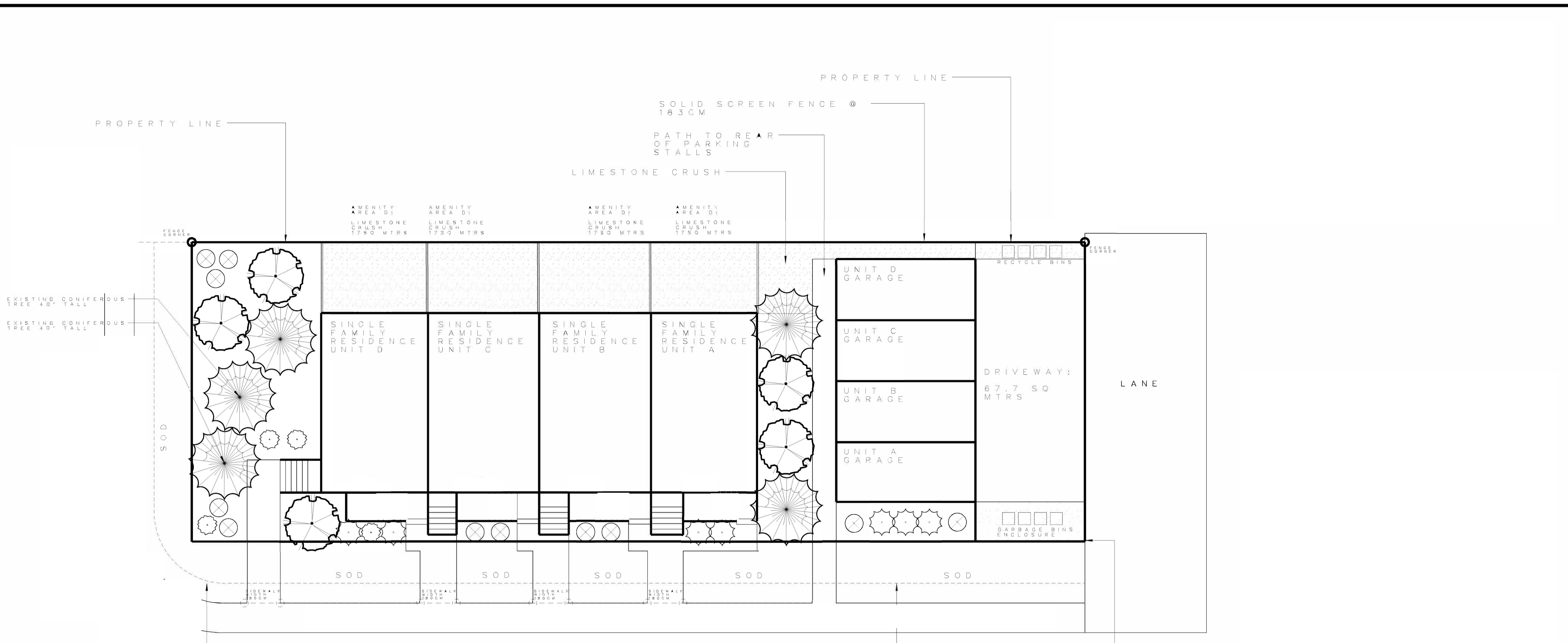


Map data ©2021 Google 50 m

	via 135 St NW and Stony Plain Rd	6 min 500 m
	via 136 St NW and Stony Plain Rd	6 min 500 m
	via 102 Ave and 134 St NW	7 min 550 m

All routes are mostly flat

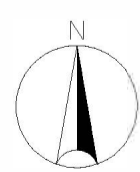
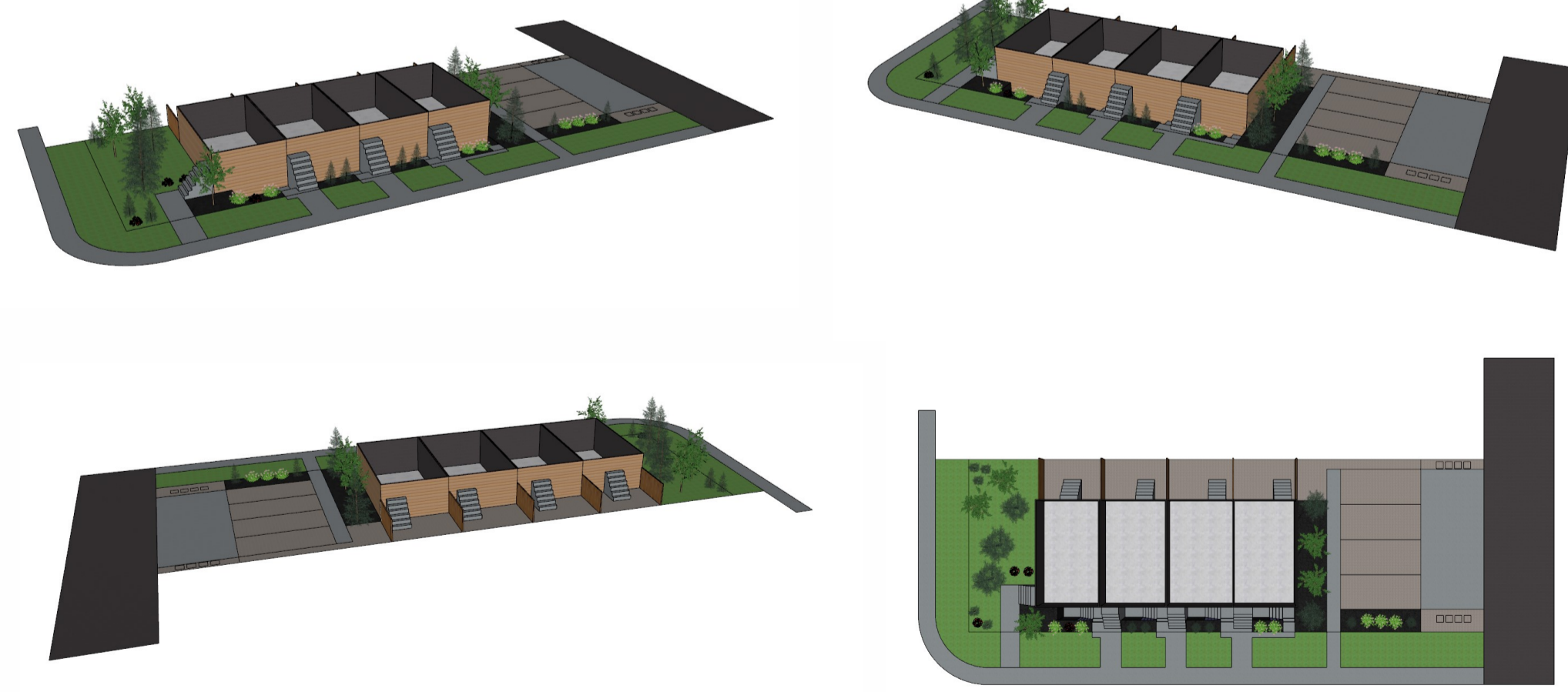
↑ 1 m · ↓ 2 m



NOTES:
 - ALL PLANTING BEDS TO BE WOOD MULCH 100MM
 - ALUMINIUM EDGE WILL BE USED AS BED EDGING

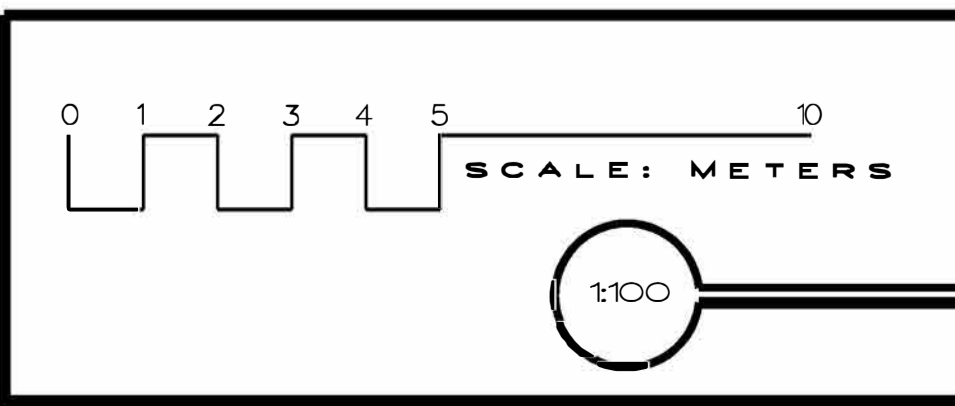
SURFACE TREATMENTS MEASURED FROM BUILDING TO SIDEWALKS:
 SOD - 156.1 SQ MTRS
 MULCH - 112.8 SQ MTRS
 LIMESTONE - 98.3 SQ MTRS

- 4 Royal Burgundy Japanese Barberry
350mm Spread
- 7 Cow Girl Birchleaf Spirea
350mm Spread
- 11 Green Penguin Scotch Pine
300mm Height
- 5 Ivory Silk Lilac
50mm Caliper
- 3 Column Blue Spruce
2.5m Height



1
A 1

PROJECT :



DRAWN BY: IZ
 CHECKED BY: IZ
 LANDSCAPING

This drawing is for information purposes only. All measurements are to be verified on site. For the complete Scope Of Works see Proposal.

NB: Neither Salisbury Landscaping nor its employees are liable for construction projects by others based on this design.

The design on this sheet is based exclusively on Salisbury Landscaping completing the project based on their design standards and methods.

