

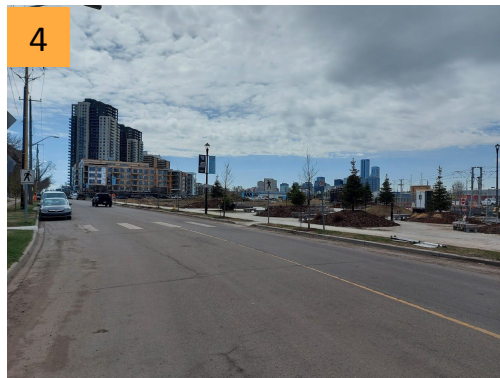
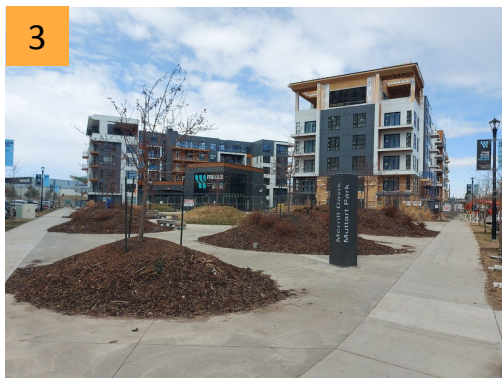
ITEM 3.20 - Boyle Street  
CHARTER BYLAW 19819

DEVELOPMENT  
SERVICES  
August 17, 2021





# 3 Site



# 4 The Application

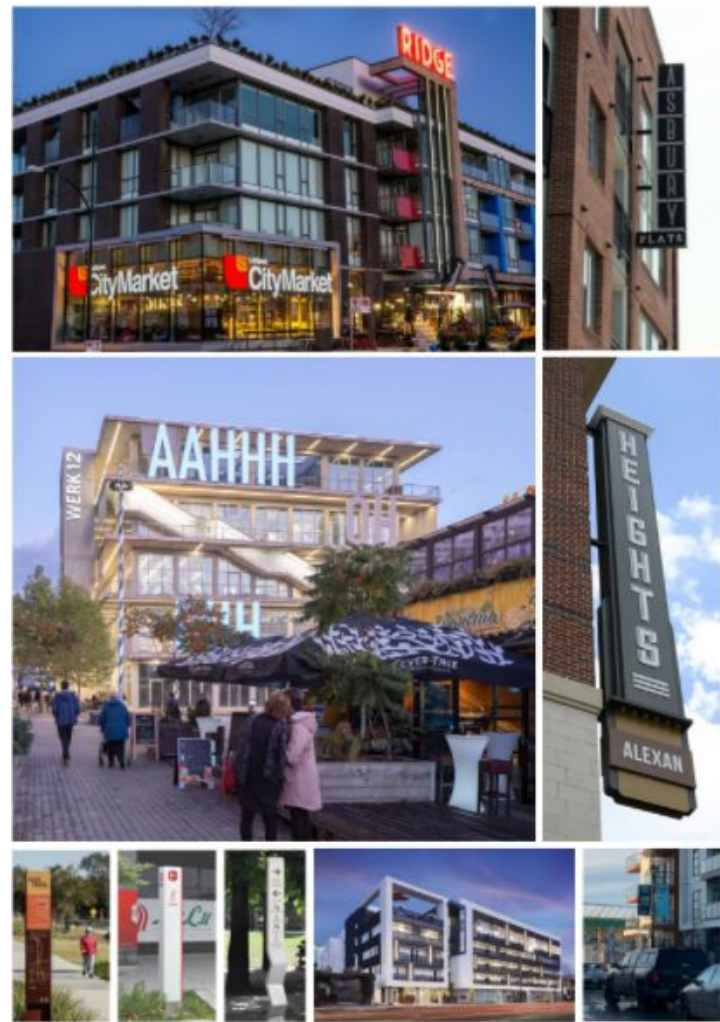




Figure 64: Required Ground-Floor Land Use

Legend:

- Plan Boundary
- Existing Stadium Station
- LRT tracks
- Existing LRT Station Platform
- Potential LRT Platform
- Required Ground Floor Retail/Commercial
- Optional Ground Floor Retail/Commercial

Map Labels:

- Fire Station No. 5
- Santa Maria Goretti Centre
- Joe Clarke Athletic Grounds
- Commonwealth Stadium
- Field House
- GCRC
- Kinross Ravine
- Save On Foods
- East Edmonton Public Health Centre
- Dawson Park
- Riverside Golf Course
- North Saskatchewan River

Map Scale: 0 50m 100m 150m



Stadium  
District  
Node



ADMINISTRATION'S RECOMMENDATION: **APPROVAL**