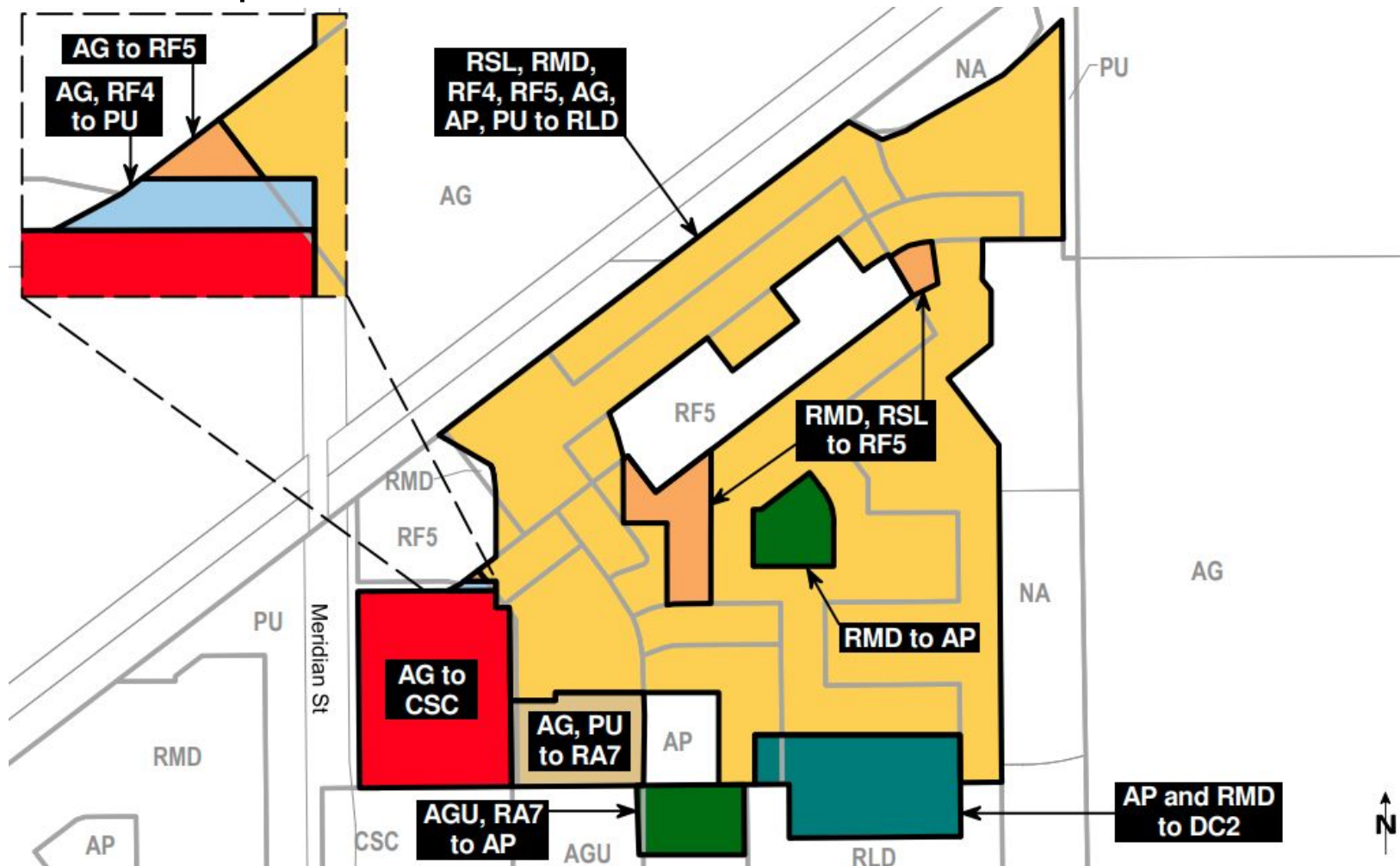
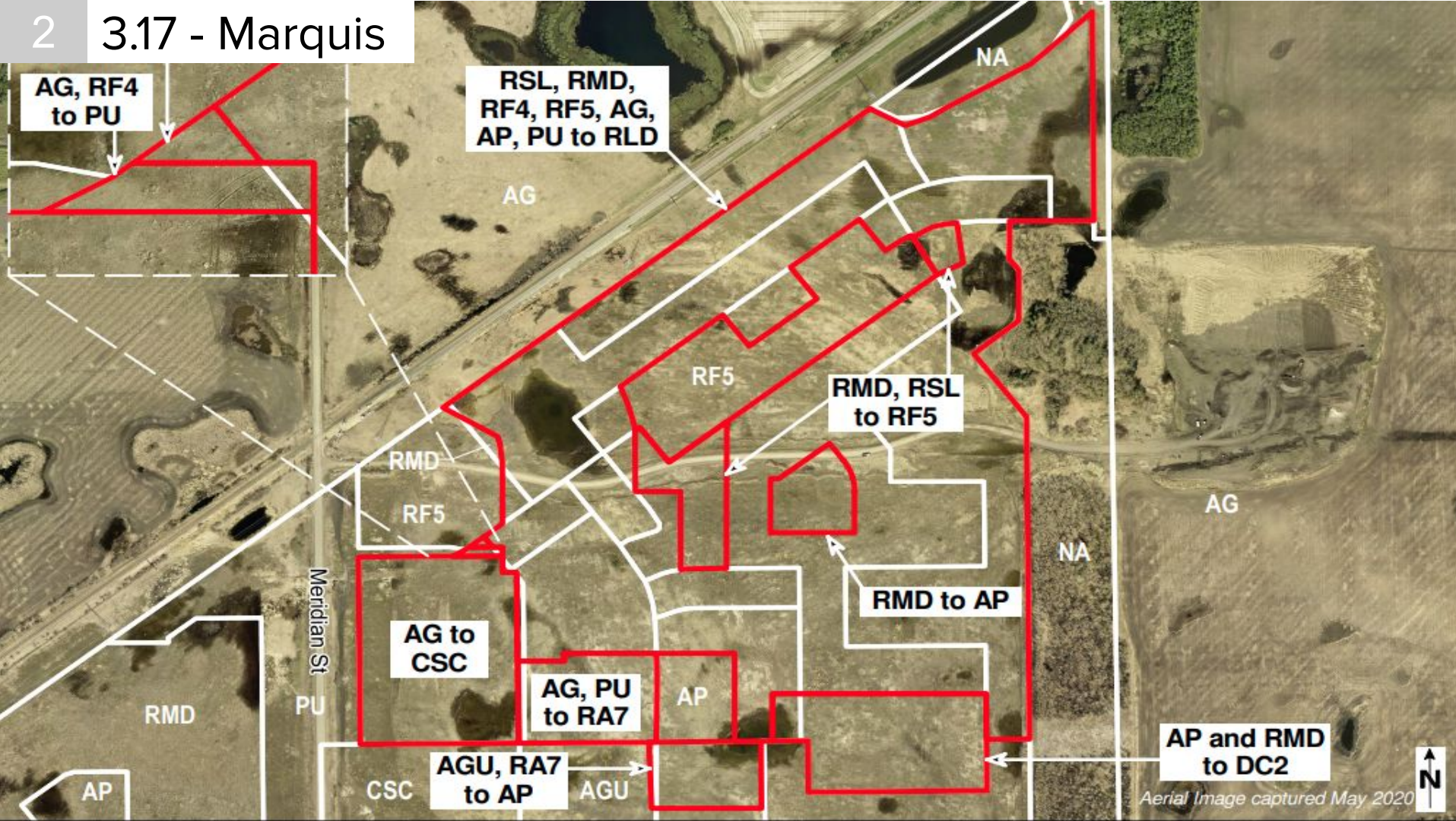
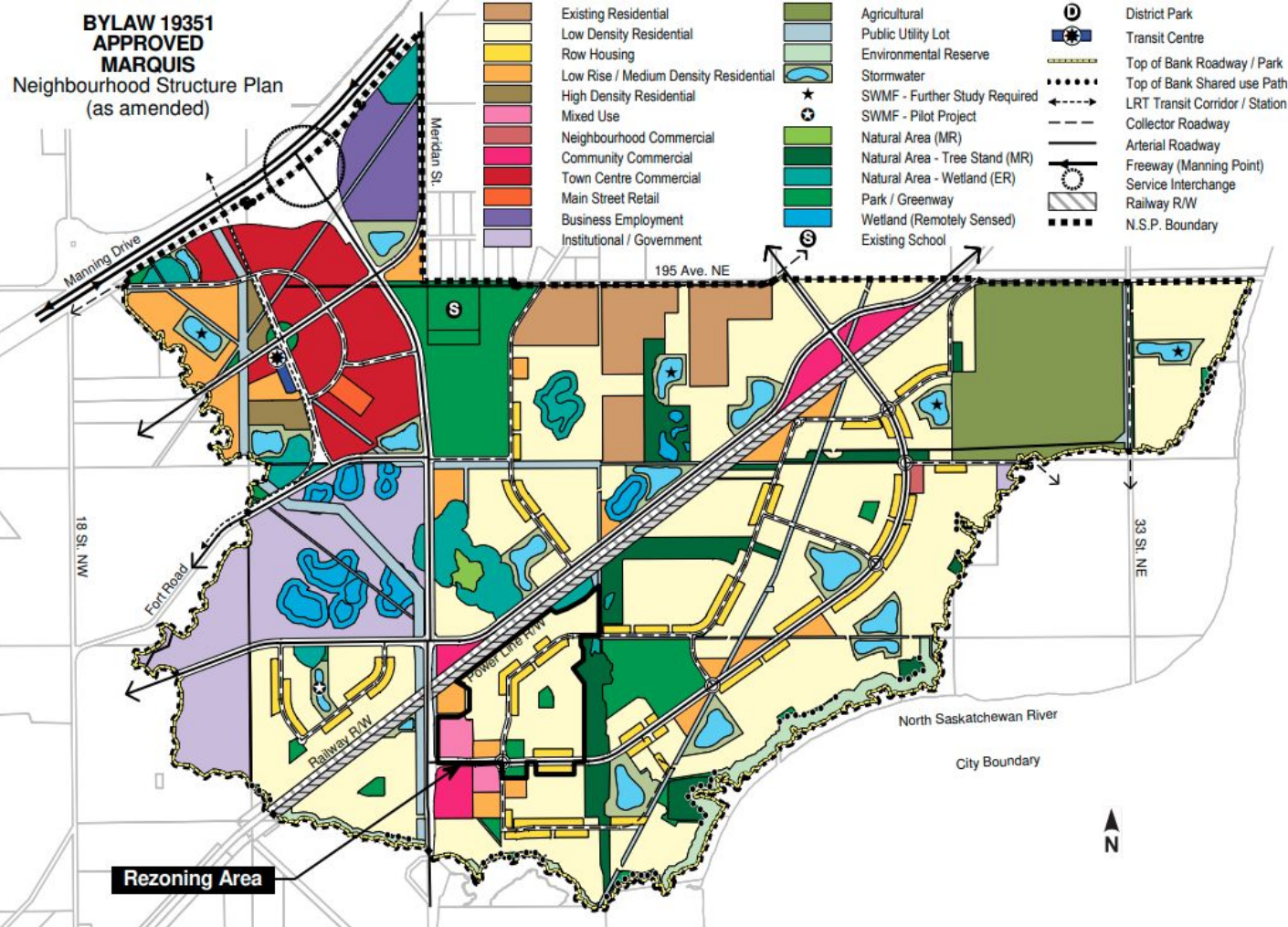


3.17 - Marquis

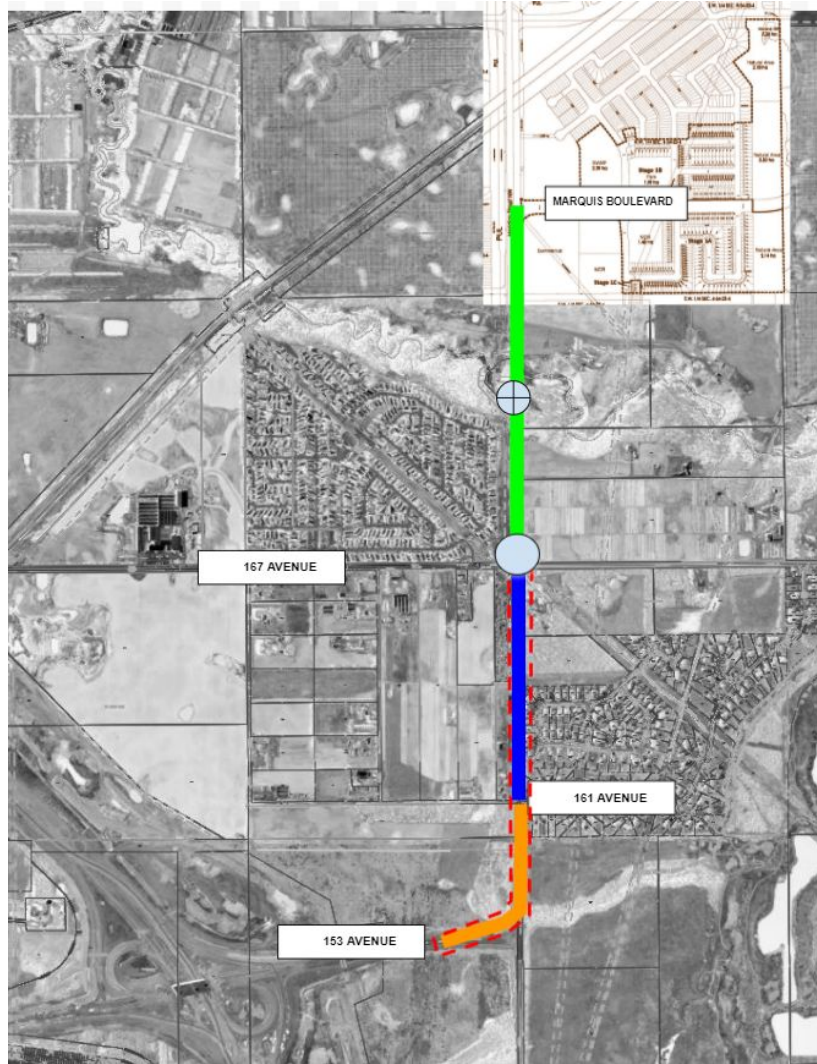




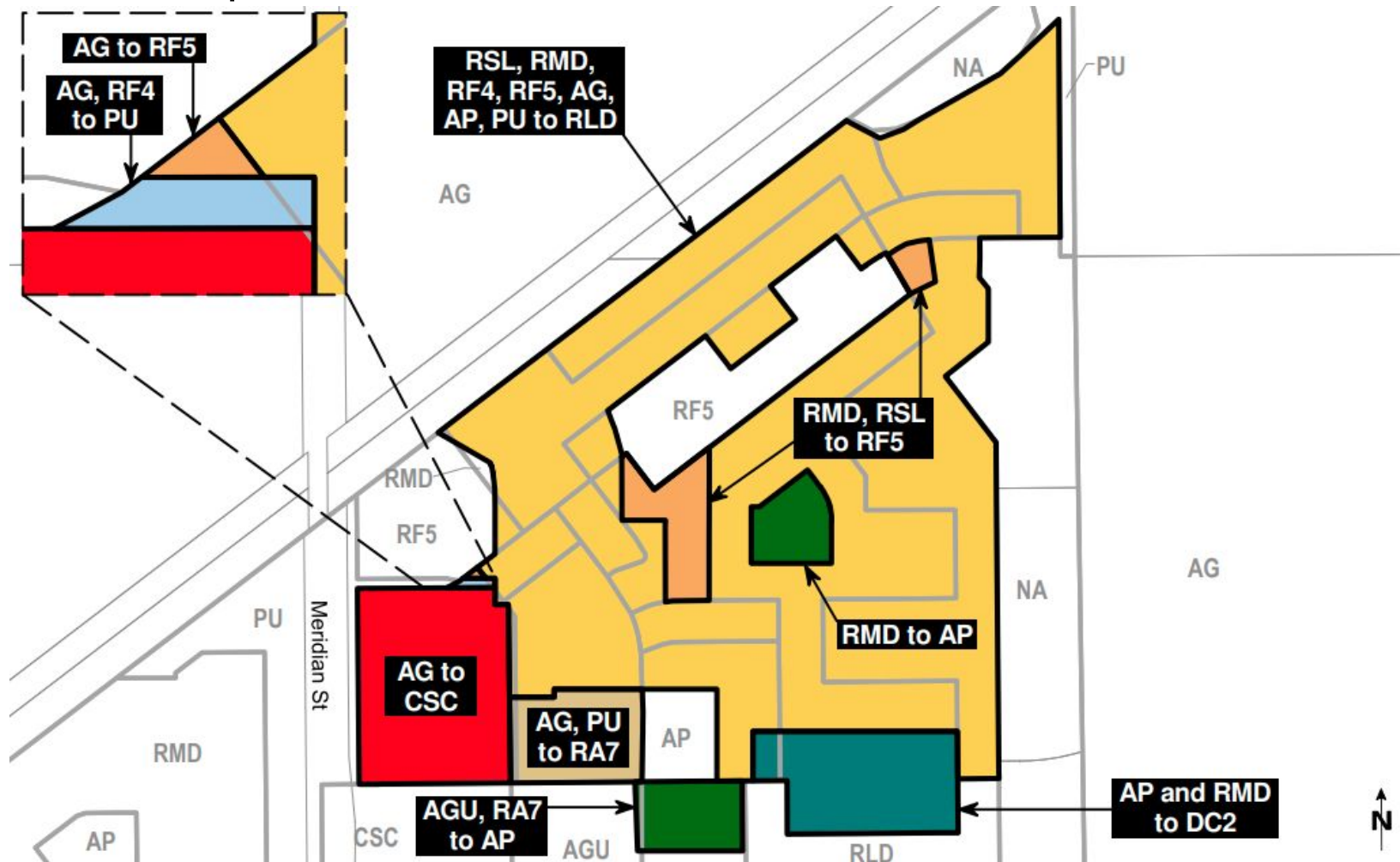
3.17 - Marquis



Note: Location of collector roads and configuration of stormwater management facilities are subject to minor revisions during subdivision and rezoning of the neighbourhood and may not be developed exactly as illustrated.

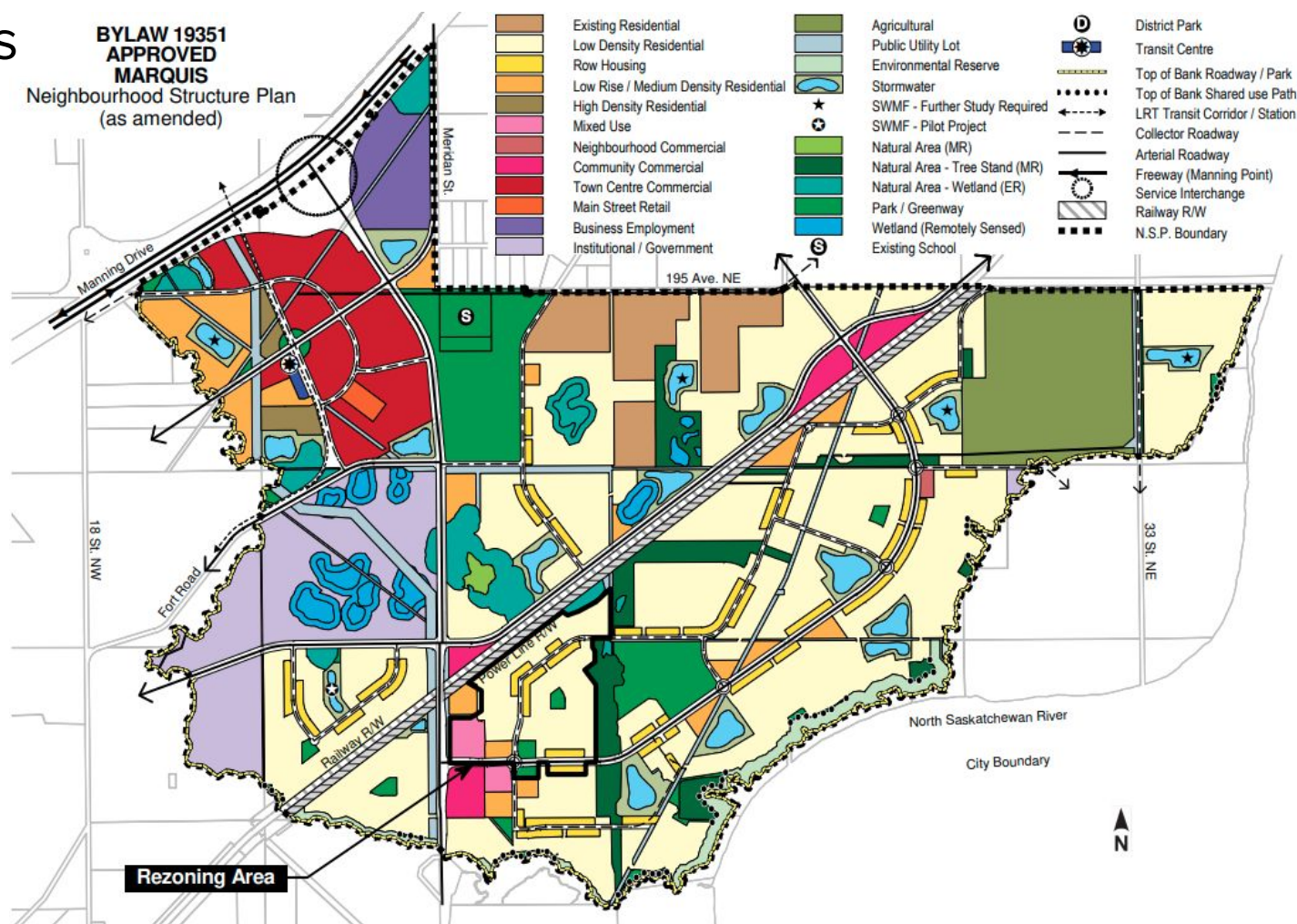


3.18 - Marquis



3.18 - Marquis

**BYLAW 19351
APPROVED
MARQUIS**
Neighbourhood Structure Plan
(as amended)



Note: Location of collector roads and configuration of stormwater management facilities are subject to minor revisions during subdivision and rezoning of the neighbourhood and may not be developed exactly as illustrated.

