



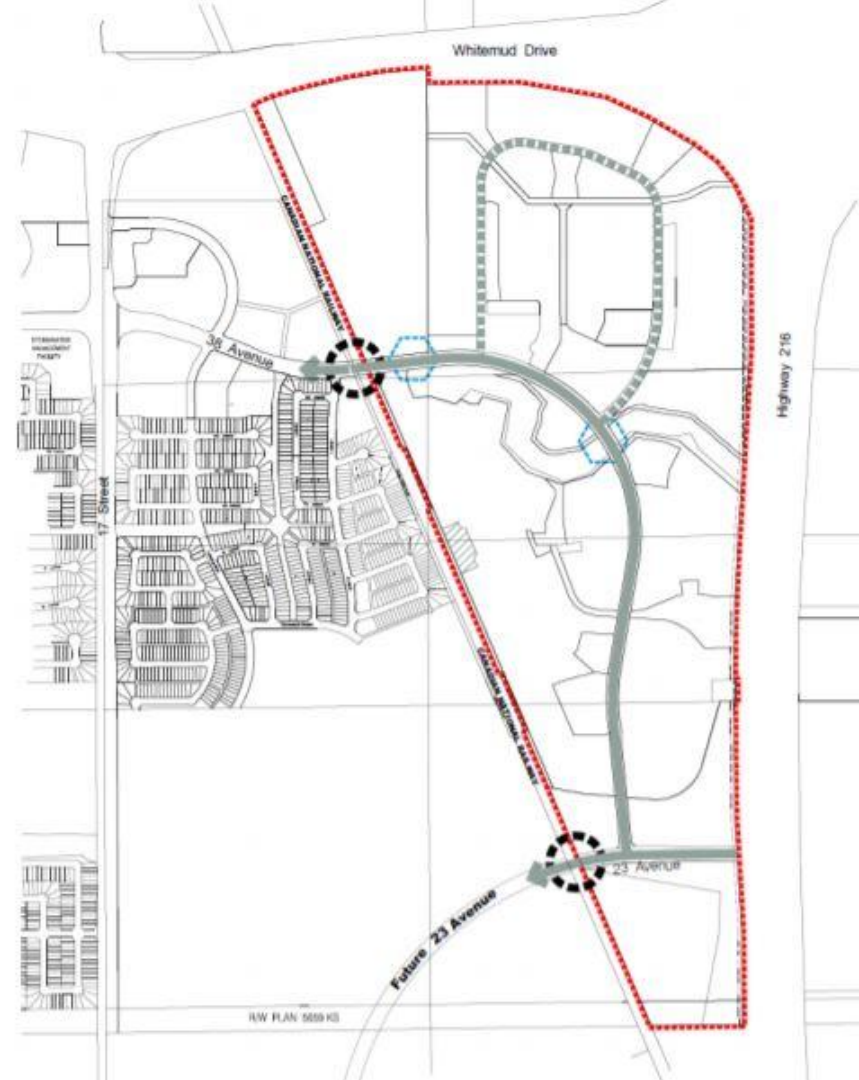
Urban Planning and Economy
UPE00402

Edmonton

**Emergency Response Delays and
Options for the Maple Road and
23 Avenue Extension**

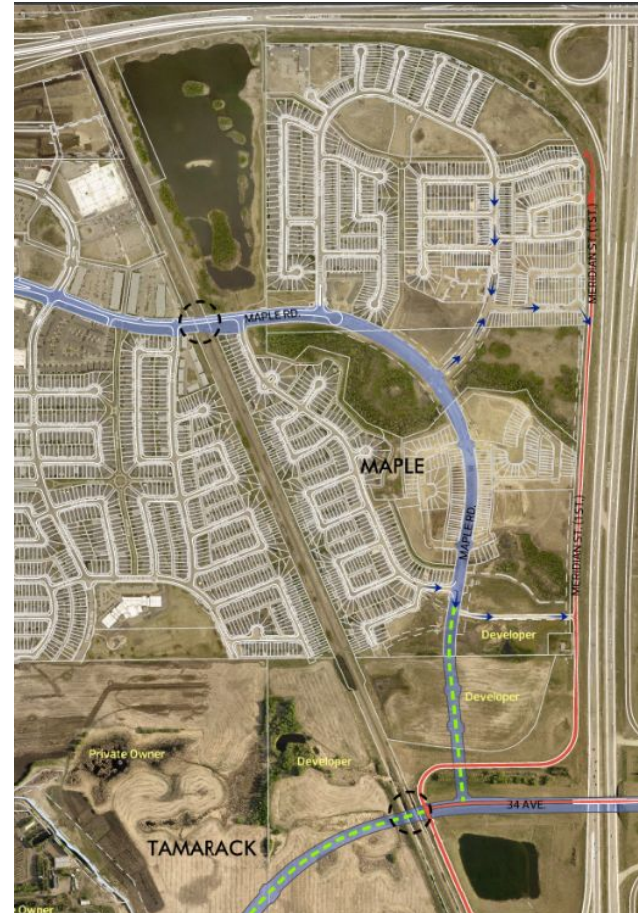
Maple Neighbourhood

- Approved by Council in 2010
- Reviewed by CN Rail
- Reviewed by Fire Rescue Services



Neighbourhood Access

- Arterial access via Maple Road
- Emergency and secondary access via Meridian Street
- Future arterial access via 23 Avenue extension to 34 Avenue
- Emergency access via Anthony Henday Drive northbound



Emergency Access

- A blocked rail crossing affects 2% of emergency calls to Maple
- Proximity to the nearest Fire Station impacts response times
- Emergency response times to Maple are comparable to other neighbourhoods in the growth areas



Next Steps

- Maintain current levels of roadway maintenance
- Continue working with developers for staged urban arterial roadway upgrades
- Continue monitoring emergency response times

Thank you.

Edmonton