

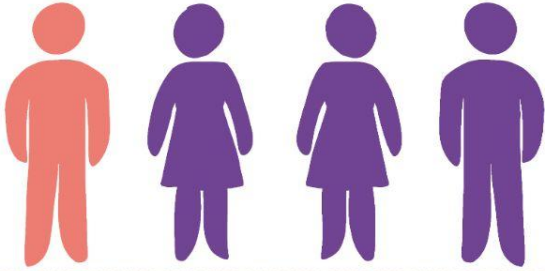
# Belonging:

## Stories of the Dignity and Resilience of Immigrants

The State of Immigration and Settlement  
in Edmonton - Annual Report 2021

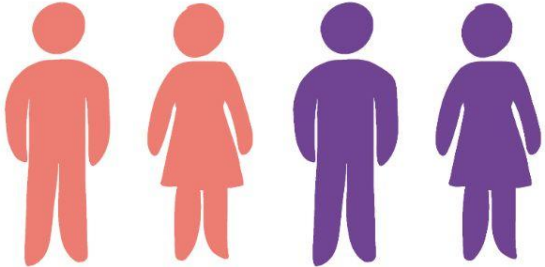
Edmonton

2021



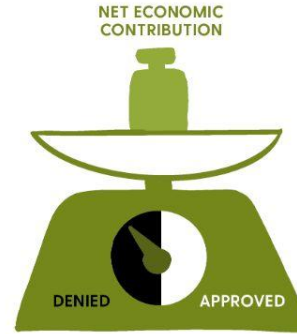
1 in 4 Edmontonians  
is an immigrant.

2050



By 2050 50% of our  
population will be  
immigrants.

# Foundational Concepts



BONDS



BRIDGES



LINKS





# Cultural Wealth Model



# Social Inclusion: Seven Transformational Priorities

1. MIGRANTS AS CITY-MAKERS
2. THE POWER OF COMMUNITY VOICE
3. PEOPLE-INFORMED POLICY
4. SEEING THE INVISIBLE
5. RICHER DATA » BETTER DECISIONS
6. INCLUSIVE BUSINESS, ENTREPRENEURSHIP  
& SOCIAL INNOVATION
7. CITIES ADVANCING EQUITY

# Why Blatchford?



# Possibilities





**Thank  
You**