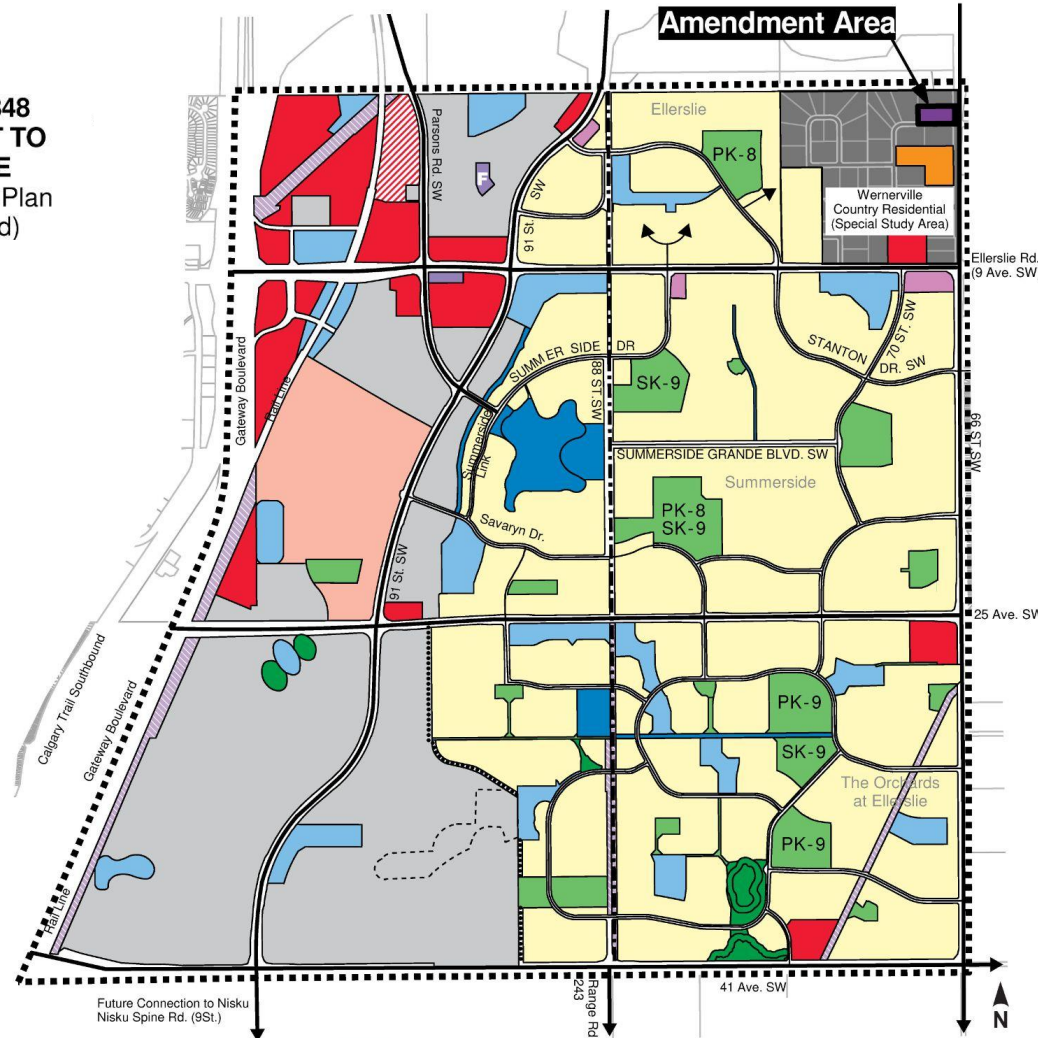


1 3.5 - Ellerslie

-  Residential
-  Neighbourhood Commercial
-  Commercial
-  Commercial (Special Area)
-  Industrial (Special Area)
-  School/Park Site
-  Private Open Space
-  Stormwater Facility
-  Natural Area
-  Transition Area
-  Mixed Use

-  Industrial Education Facility
-  Institutional
-  Southeast Woodland Natural Area
-  Future Fire Rescue Service Station
-  Public K-8 School
-  Seperate K-9 School
-  Wernerville Country Residential (Special Study Area)
-  Power Corridor
-  Arterial
-  Collector
-  Pipeline Corridor
-  ASP Boundary
-  Amendment Area

BYLAW 19848 AMENDMENT TO ELLERSLIE Area Structure Plan (as amended)

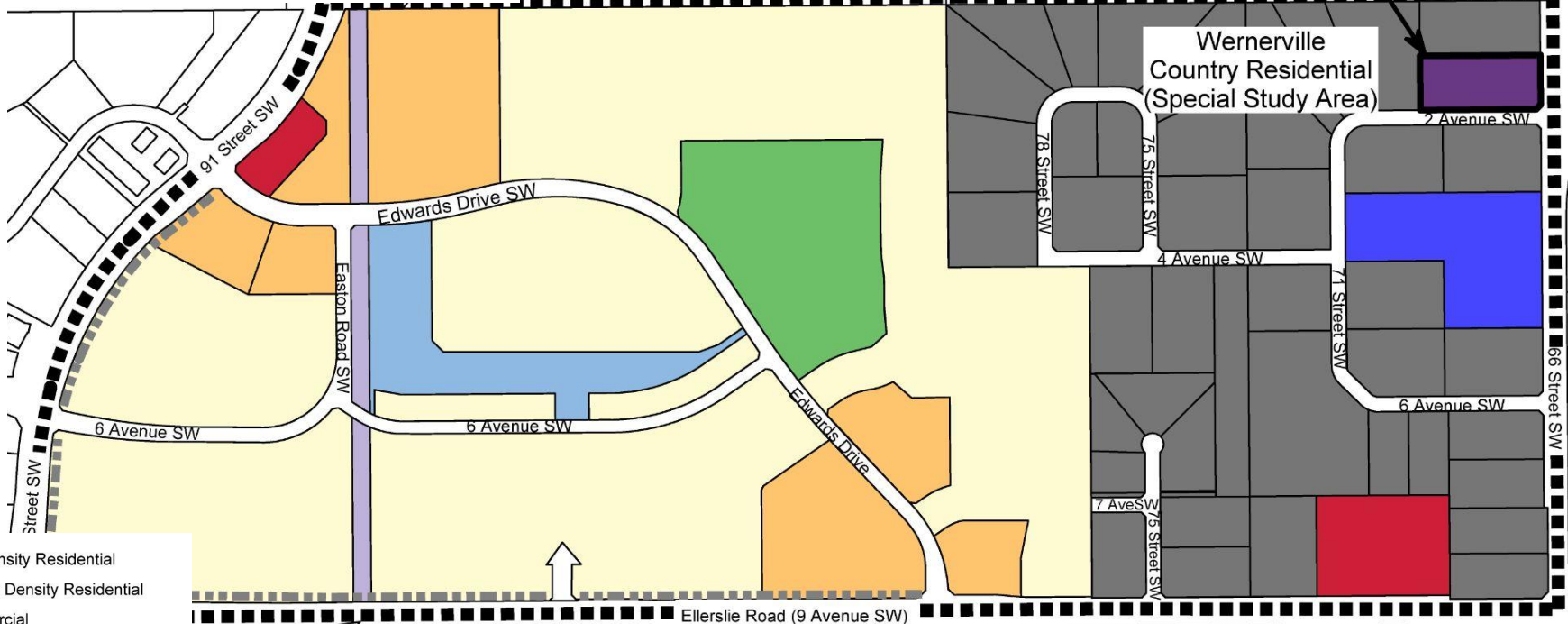


3.6 - Ellerslie

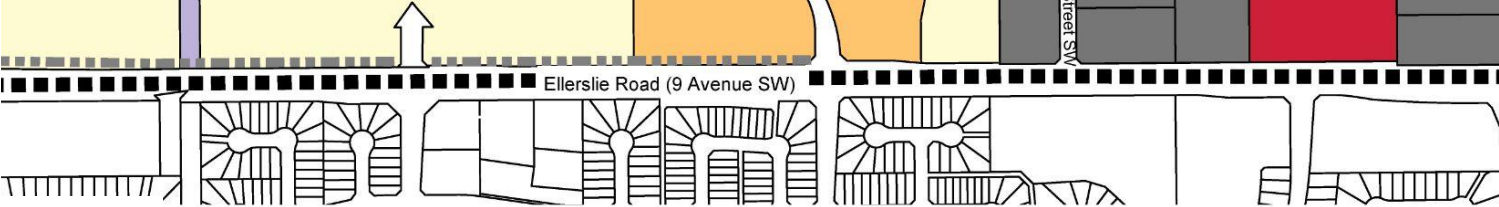
TransAlta Utility R/W

Amendment Area

Wernerville
Country Residential
(Special Study Area)



- Low Density Residential
- Medium Density Residential
- Commercial
- Institutional
- Stormwater Management Facility
- School/Park Site
- Wernerville Country Residential (Special Study Area)
- Power Corridor
- NSP Boundary
- Noise Attenuation Barrier
- Mixed Use
- Amendment Area



**BYLAW 19849
AMENDMENT TO
ELLERSLIE
Neighbourhood Structure Plan
(as amended)**





**RR to
RA7**

RR

2 Av SW

66 St SW

RF5

RF4

1a Av SW

65 St SW

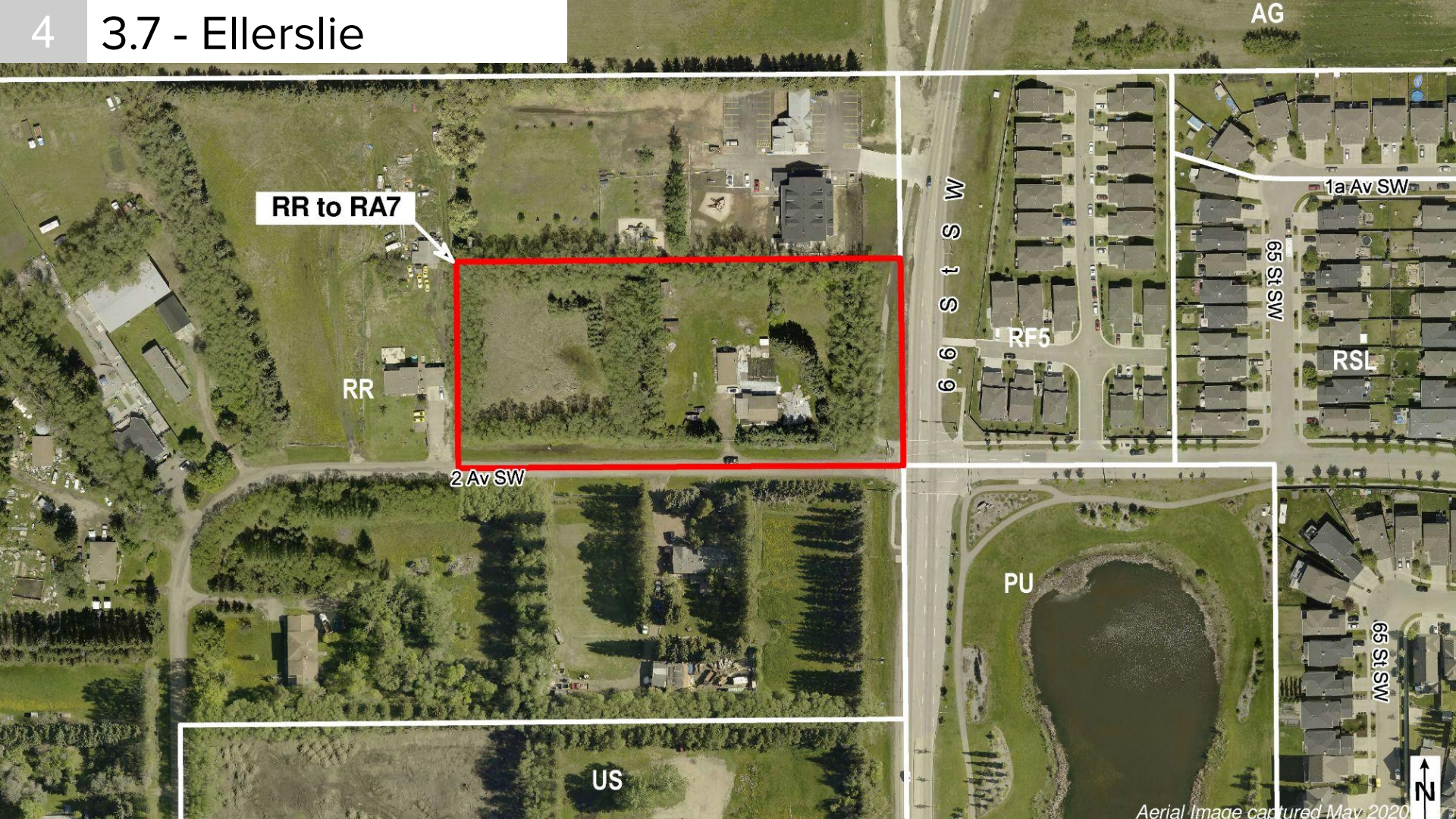
RSL

PU

US

65 St SW





RR to RA7

RR

2 Av SW

66 St SW

RF5

1a Av SW

65 St SW

RSL

AG

PU

65 St SW

US

