



Serving Edmontonians *Citizen Services*



Edmonton

Affordable Housing & Homelessness

Rob Smyth, Deputy City Manager, Citizen Services
Jackie Foord, Social Development
Christel Kjenner, Social Development

November 4, 2021

PAGE 62: Orientation Guide

Strategic Wayfinding



Statutory Plan / Bylaw Status



	URBAN PLANNING AND ECONOMY	INTEGRATED INFRASTRUCTURE SERVICES	CITY OPERATIONS	CITIZEN SERVICES	
EMPLOYEE SERVICES					ENABLE
COMMUNICATIONS AND ENGAGEMENT					CONNECT
OFFICE OF THE CITY MANAGER					GUIDE
FINANCIAL AND CORPORATE SERVICES					STEWARD
	IMAGINE	BUILD	MAINTAIN/OPERATE	LIVE	

Edmonton

The next 90 days of Affordable Housing & Homelessness

In the next 30 days...

- Administration prepared and will be presenting three reports:
 - CS00811 Homelessness 2021/2022 Winter Pandemic Response Plan
 - CS00799 Rapid Housing Initiative Funding Agreements - Confirming the transfer of funds to two new supportive housing projects previously approved by City Council
 - CS00809 Homeward Trust Foundation - 2021 City of Edmonton Subsidy
- Housing and Homelessness also contributed content to CS00820 Community Safety and Well-being Report, led by the Department Strategy section

In the next 60 days...

- Administration will present Affordable Housing Property Tax Exemptions Information Report to Council by Fourth Quarter 2021

In the next 90 days...

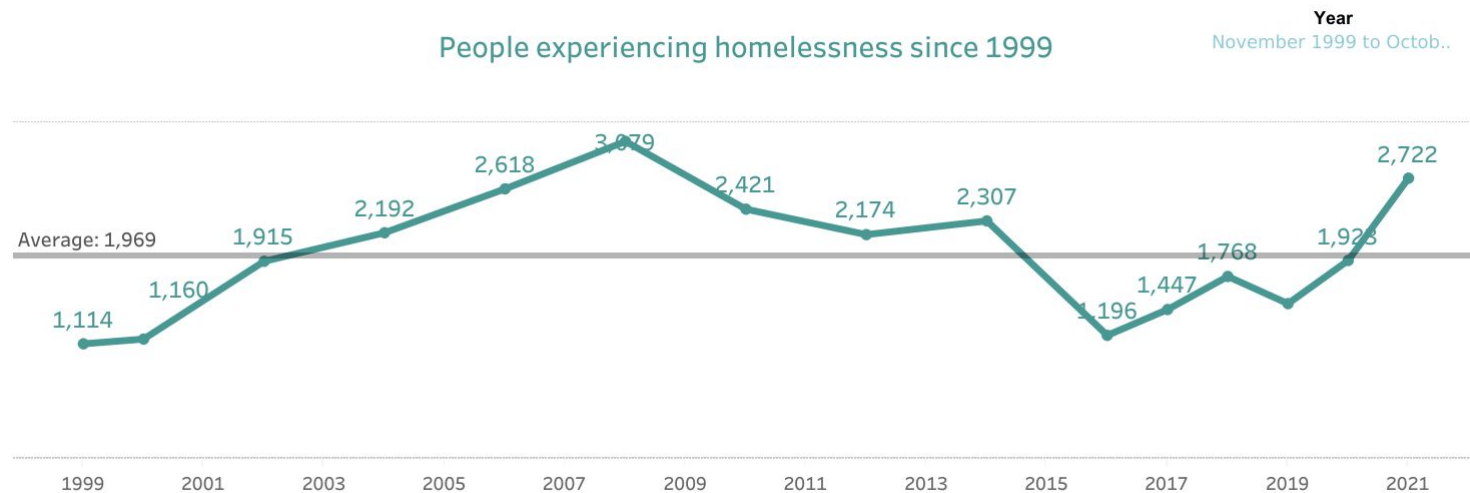
- In Q1 2022, Administration will present:
 - A report to seek approval of Affordable Housing Investment Program Grants
 - CS00399 Edmonton's Approach to Supportive Housing: providing a One-Year Update

Housing Need

- **Core housing need**
 - Falls below standards for adequate, affordable or suitable housing
 - Affordable = less than 30% of household income
- **56,000** renter households in Edmonton are in core housing need
- **20%** of Indigenous households in core housing need, compared to **12%** of non-Indigenous households



Homelessness in Edmonton



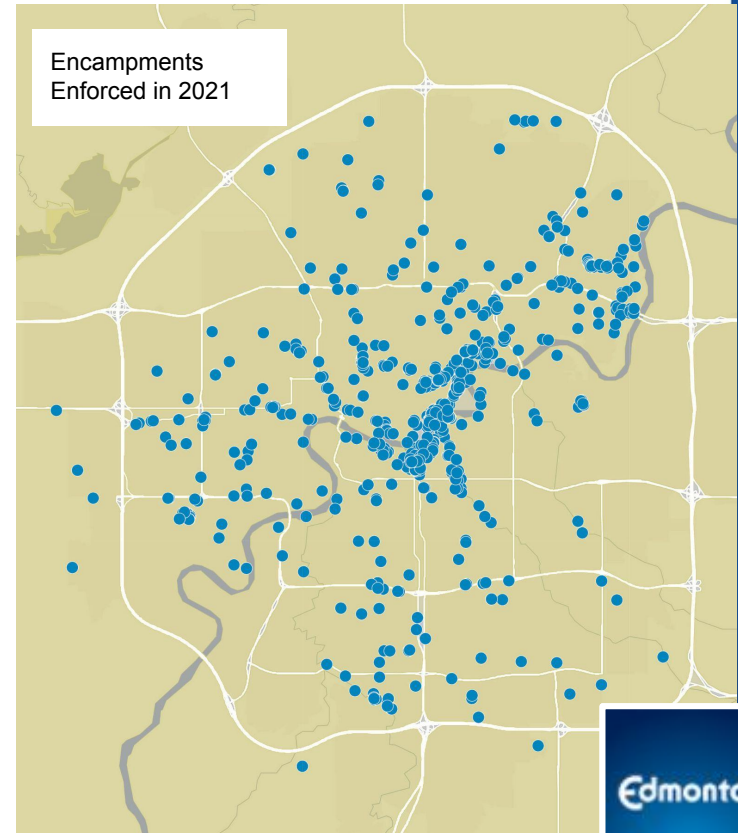
* Numbers from 1999 to 2016 are from Point-In-Time Counts conducted in the spring or fall.

Data from 2017 to 2020 show the number of people from the By Name List as of the end of April of each year.

Year 2021 shows the BNL total for the year to date.

Impacts of Homelessness

- Social disorder is a symptom of the housing shortage and lack of support
- Impacts safety, economic recovery, investment attraction
- ~\$2 million in direct encampment clean-up costs annually
- Edmonton among the very hardest-hit communities in Canada for opioid deaths



Our Partners

- **Government of Canada**
 - Capital and operating funding for affordable housing
- **Government of Alberta**
 - Capital and operating funding for affordable housing
 - Emergency shelter and other homelessness support funding
 - Income support
- **Homeward Trust Edmonton**
 - System planner
 - CBO/Designated Entity - consolidates, coordinates and allocates GoA and GoC homelessness operating funding
- **Nonprofit social agencies**
- **Affordable housing providers**
 - HomeEd
 - Other developers and operators

Canada 

Alberta 
GOVERNMENT

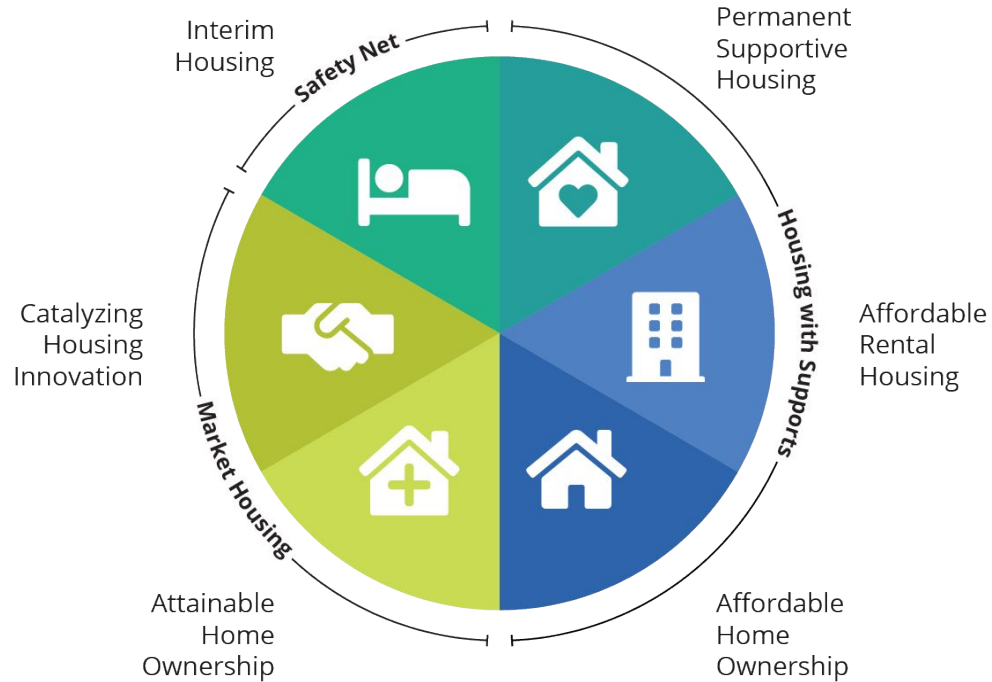
Edmonton

 homeward trust
edmonton


homeEd

Edmonton

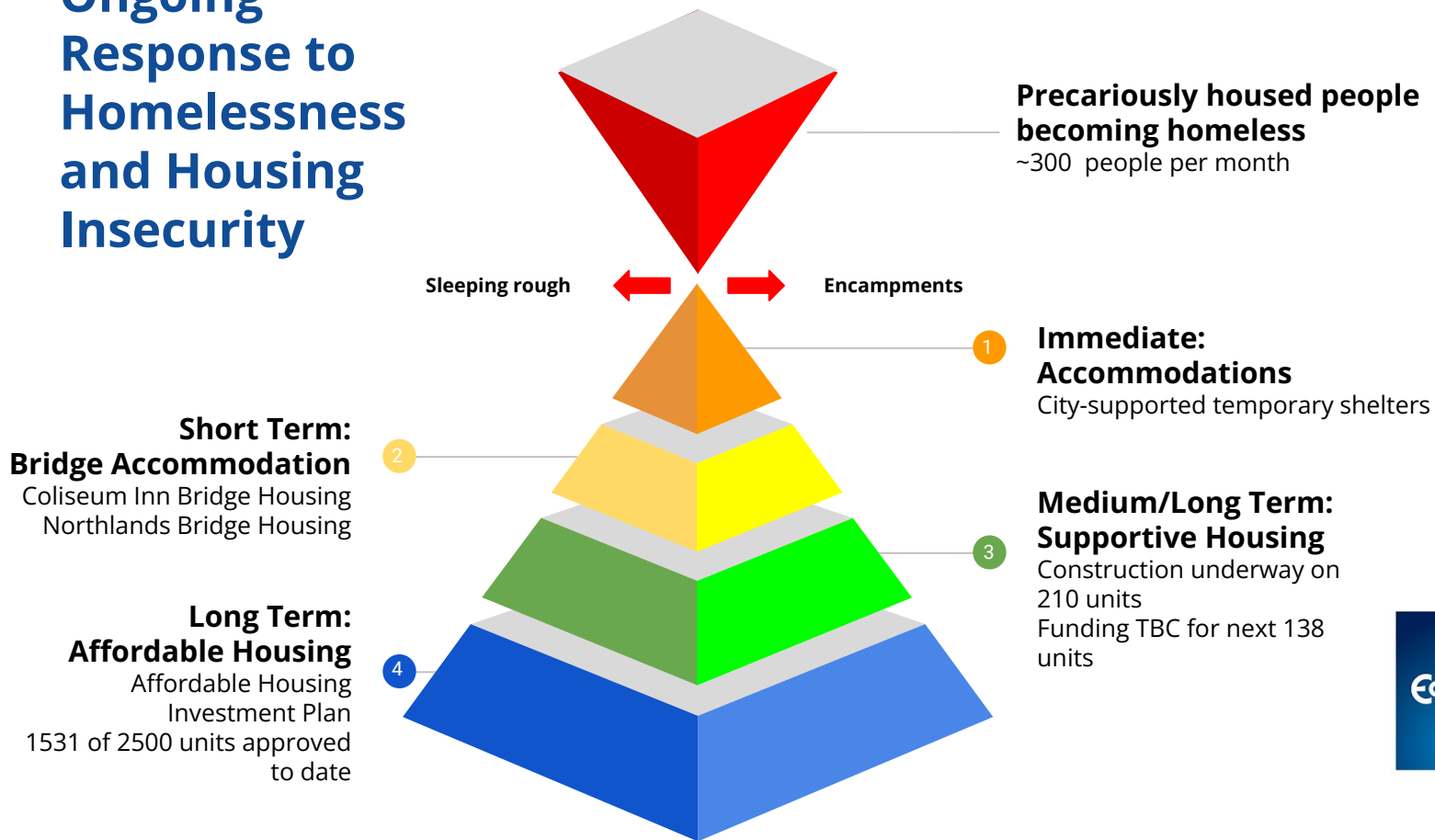
Our Role



Housing gap

- 25,000+ deep subsidy units
- Around 21,000 near-market units; and
- 916 units of supportive housing

Ongoing Response to Homelessness and Housing Insecurity



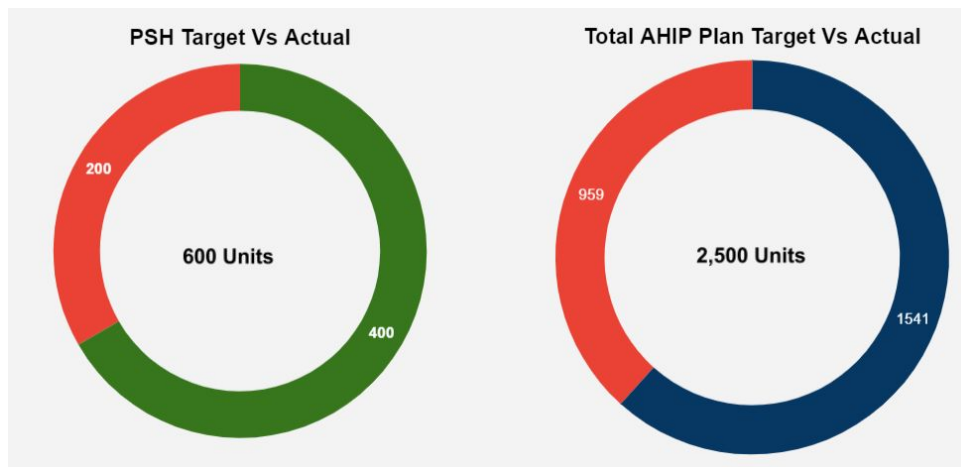
Affordable Housing Investment Plan (AHIP) 2019-2022

Goals

- 2500 new units of affordable housing by 2022
 - 600 units of supportive housing

Resources

- \$132M 2019-2026
- Land (Surplus School Sites & City-owned Land)



Affordable Housing Investment Program (AHIP) 2019-2022

- City Grants to leverage non-municipal funding
- Approximately \$10M / yr for 4 yrs (\$40M)
- Pays for 25% of construction costs of the affordable units
- Open to private and nonprofit builders



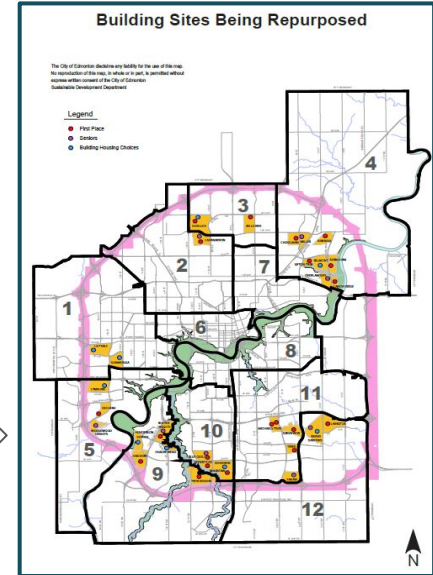
Building Housing Choices (Surplus school sites)

Neighbourhood is planned and land identified for schools and parks.

Land for schools are serviced and made ready for future development.

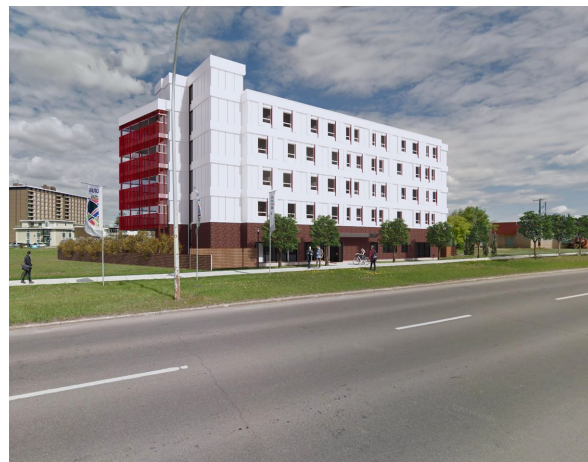
At a later date, the school board may determine that a school is no longer needed on the site.

School board declares the school site "Surplus" and the City may acquire it for other uses.



Supportive housing

- Combines affordable housing with on-site health and social supports to help people who have experienced chronic homelessness access and maintain permanent housing
- City contributions of land and funding have advanced these projects
- 210 units are currently under construction, with another 138 units TBC



Artistic renderings of the Westmount and Terrace Heights developments

What's next

- City launched AHIP Land stream and is accepting project proposals for 3 sites until January 21, 2022
 - Housing providers will be selected through an open and competitive process in Q1 2022
- Beginning work on an Updated Affordable Housing Strategy, including a new Housing Needs Assessment and an Updated Housing Investment Plan
- Indigenous Affordable Housing Strategy
- Affordable housing public information campaign
- City-owned affordable housing asset management strategy to address expiry of social housing agreements

**Thank you
Questions?**

Demand for Shelter - Winter 2021

	OCTOBER 2019	OCTOBER 2020	OCTOBER 2021	Growth from 2020 to 2021
People experiencing homelessness	1,390	1,773	2,811	+53%
Unsheltered	375	510	759	+48%
Sheltered	207	305	447	+31%
Total expected to require shelter	582	815	1,206	+32%

Current Planned Day and Overnight Shelter Space

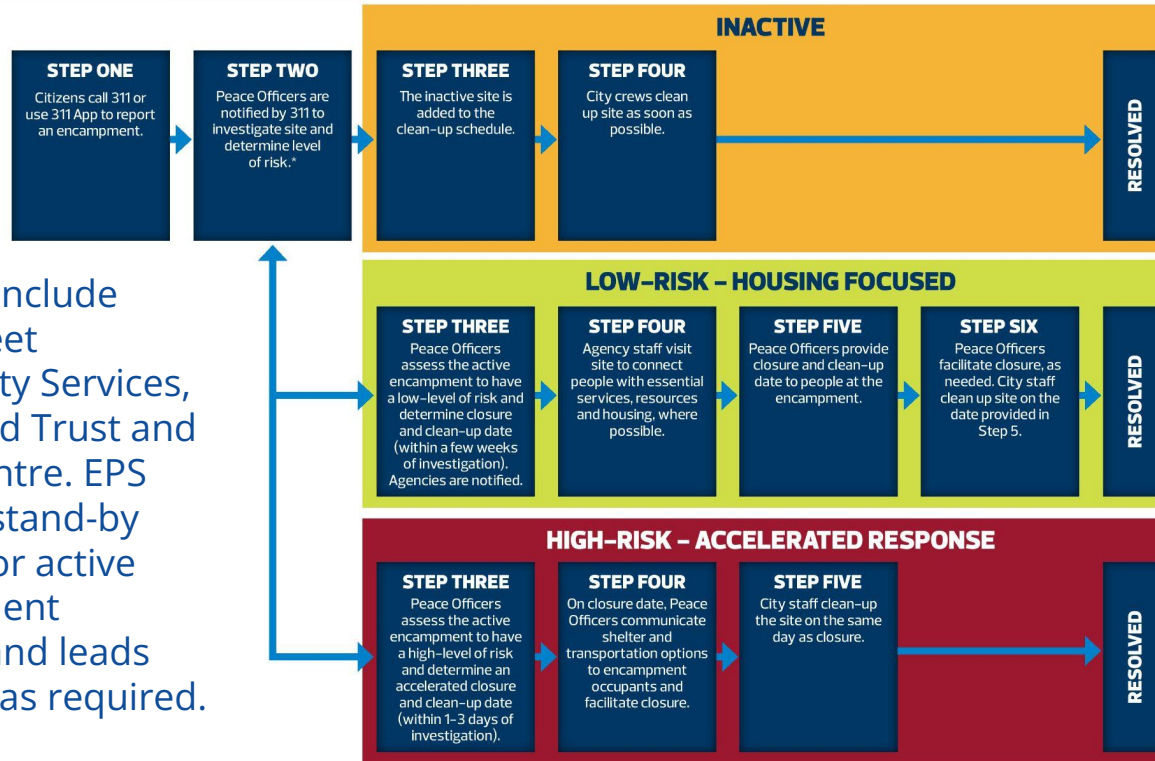
	WINTER 2020	SUMMER 2021	PLANNED WINTER 2021	CAPACITY CHANGE YEAR OVER YEAR
Dedicated Day Spaces	900	688	165	-82%
Shelter Beds (24/7 & overnight)	950	632	641	-32%

2021-22 Winter COVID Response Plan

1. Fund expanded capacity for Day Services at Bissell Centre, Boyle Street Community Services and the Mustard Seed
2. Extend Hope Mission's lease of the Spectrum building through the winter
3. Execute and implement the City's regular extreme weather response
 - ETS Extreme Weather Bus
 - Temporary overnight shelter space
 - Boyle Street Community Services' Winter Warming Bus
4. Continue to monitor capacities and work with our partners to implement additional measures if required.

How the City and its partners respond to encampments on public land

Edmonton



Agencies include Boyle Street Community Services, Homeward Trust and Bissell Centre. EPS provides stand-by support for active encampment closures and leads response as required.

Edmonton

Communications and Public Engagement

- Phase 1: Information sharing
 - Outreach to community stakeholders and adjacent neighbours after a new site is selected.
 - Provide updates on development milestones, such as a land sale, selection of a housing partner or rezoning application
 - Available to answer questions
- Phase 2: Public Engagement
 - Advise Level
 - Collect input on what the community would like to see in a Good Neighbour Plan (ex. community events, issue resolution process, regular communications)
 - Other topics are at the discretion of housing provider
- Constituent questions? supportivehousing@edmonton.ca