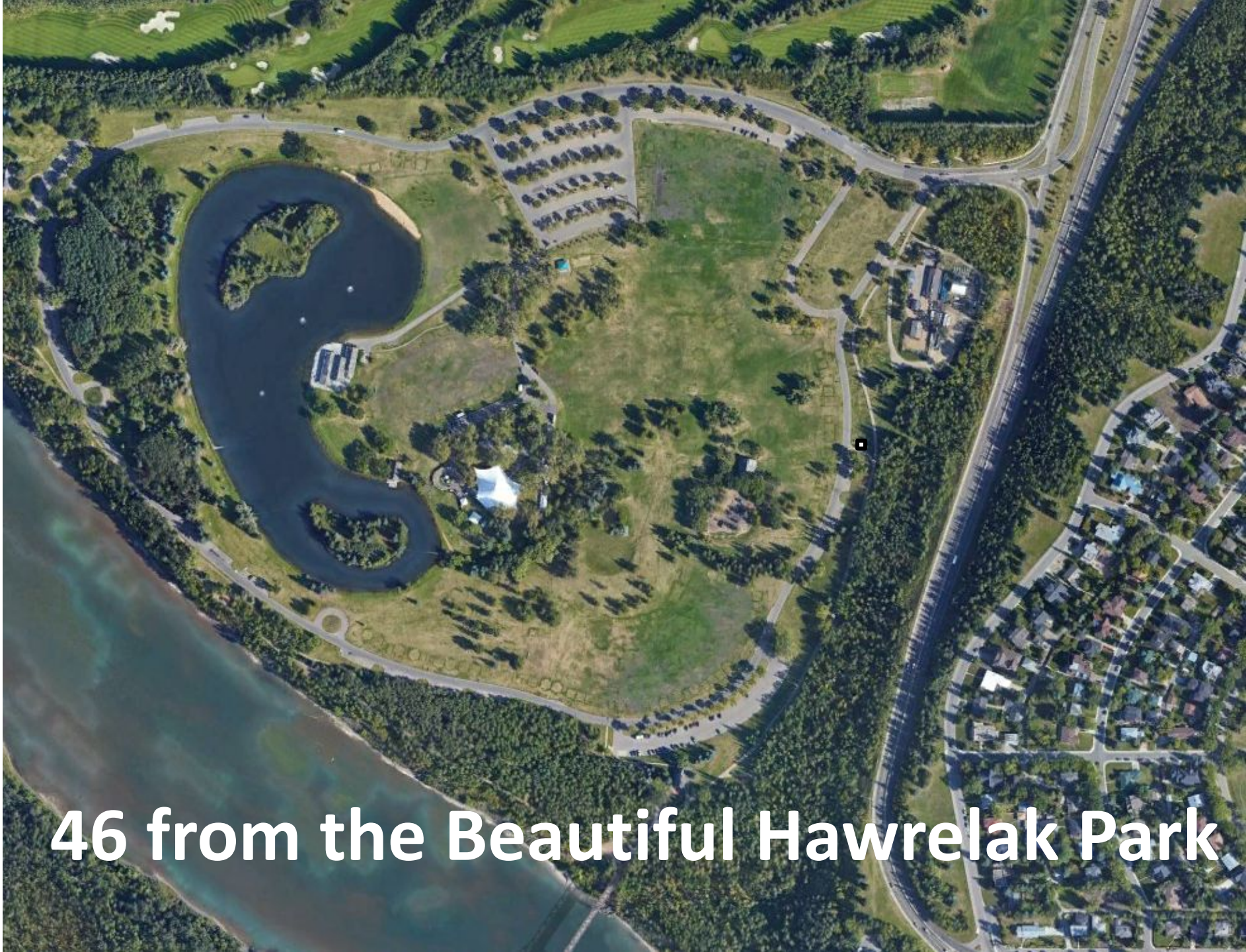


Celebrating multiculturalism for 48 years





46 from the Beautiful Hawrelak Park

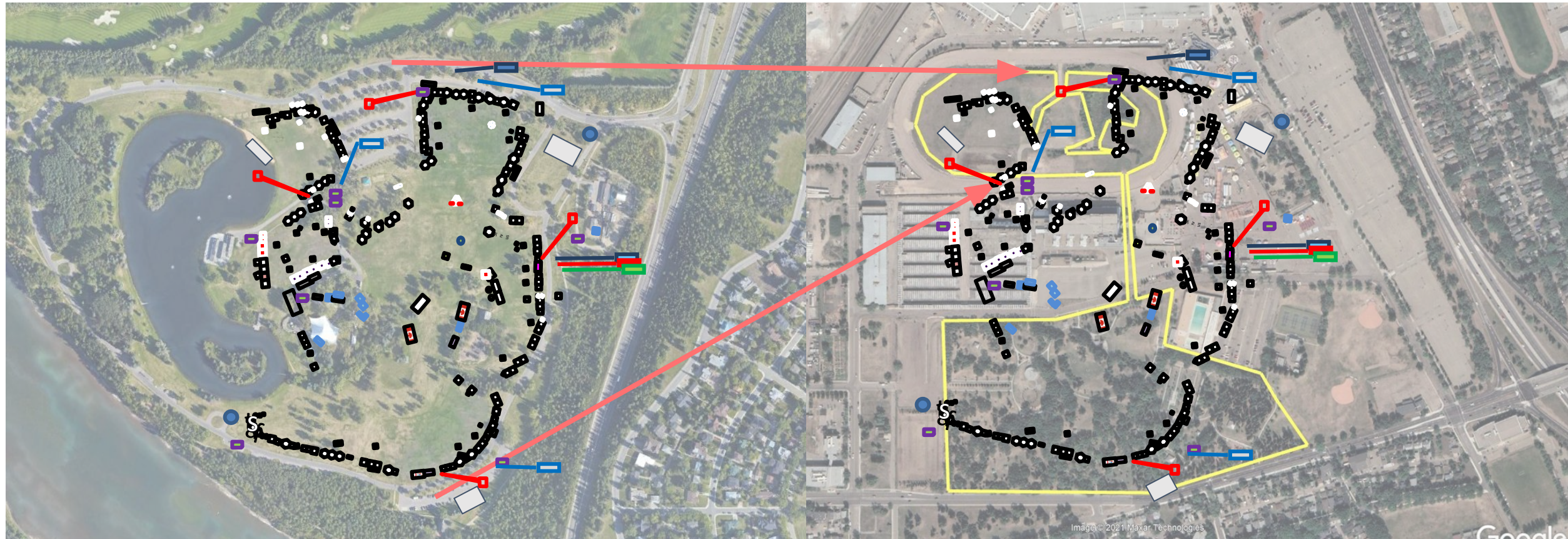


Every year a little bigger
Every year a few new cultural groups

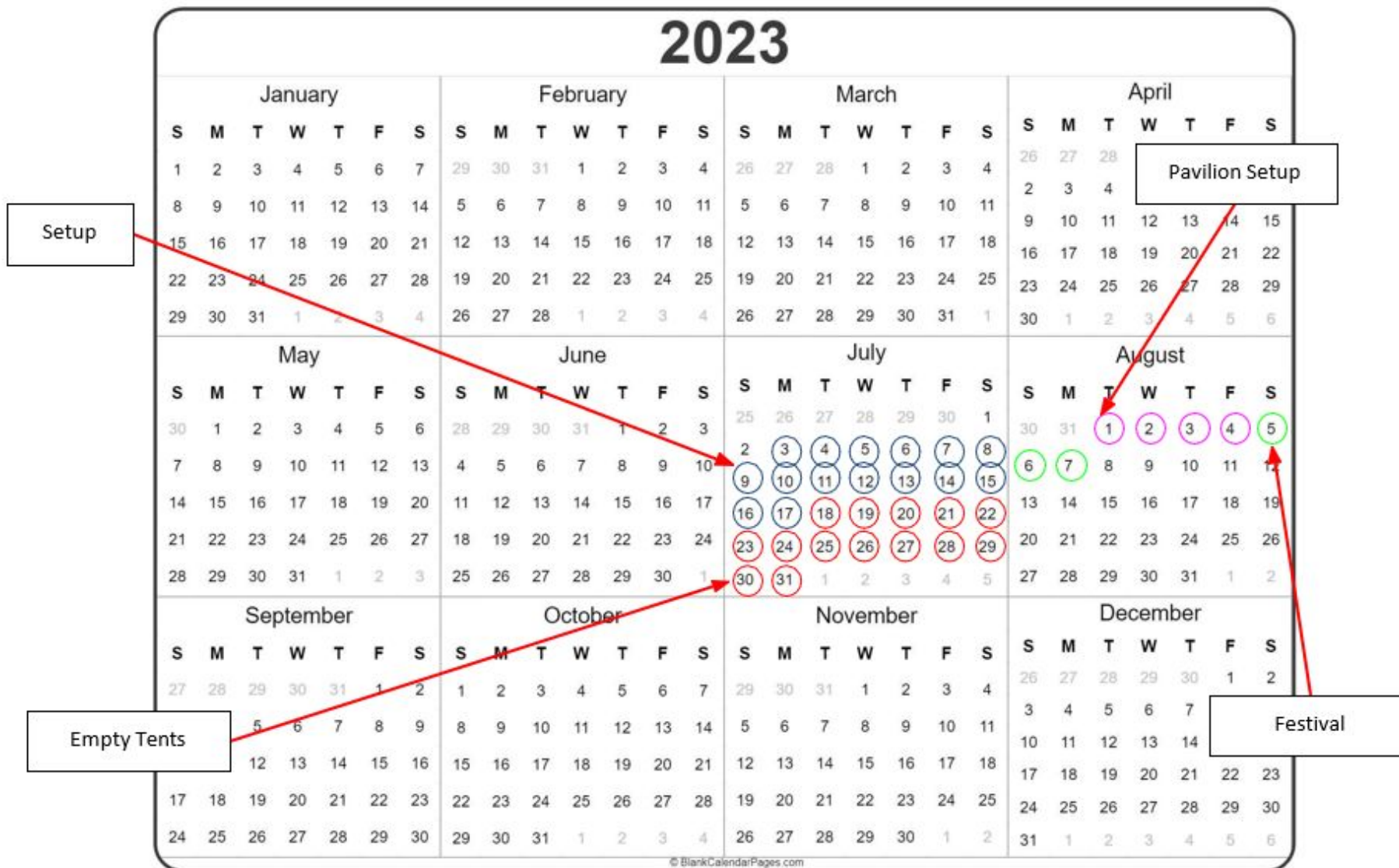
Discussions have been ongoing about moving us to the Exhibition lands.



Size comparison/layout



Staggered setup makes us more vulnerable to Climate Change fuelled storms - two week pause for K-Days



Edmonton.ca - Exhibition lands

https://www.edmonton.ca/public-files/assets/document?path=PDF/Edmonton_Exhibition_Lands_DraftPlanningFramework.pdf

“BARRIERS TO TOD WALKABILITY

the majority of the site (including Borden Park) falls outside the walkable catchment of the Coliseum and Stadium LRT Stations.”

“DISCONTINUOUS BIKE ROUTES

Cycling routes through the study area are staggered or discontinuous”

“POOR PEDESTRIAN / CYCLIST CONDITIONS

conditions in surrounding areas (narrow sidewalks, high traffic volumes and speeds, exposure, safety concerns, unattractive industrial and commercial uses) create uninviting pedestrian and cycling environments.”

“CONNECTIVITY BARRIERS

The Exhibition Lands are physically isolated due to the barriers created by Wayne Gretzky Drive and the LRT corridor”





We didn't shut the park when EFCL built their new 100 year plaza. City administration built a plan to work around it.

**We didn't shut the festival for Groat Road Bridge closure.
we worked with the City and redesigned bus routes that
we still use today**



Two hours of terror



Heritage Fest picks up pieces, opens Sunday

By AL TURNER
Journal Staff Writer

The Heritage Festival will likely proceed on schedule despite Friday's tornado and massive damage to the site in Thursday's freak windstorm, say event organizers.

Only a few of the tents were damaged in Friday's storm, said Nena Timperley, chairman of the board of the Heritage Days Festival.

"They worked quite late last night . . . We'll see how it goes tomorrow," Timperley said.

Alan MacLean, president of the Edmonton Heritage Festival Association, said a "bit of a tornado"

dike Days Association provided tents to replace those that were damaged.

"We've always called ourselves the volunteer capital of the world, and today we're proving it," MacLean said from the Hawrelak park command centre. "We will open on schedule. We owe that to the groups."

The two-day festival, which features the cuisine and culture of 43 different ethnic groups, is scheduled to open at 10 a.m. Sunday although the official ceremony will not take place until noon.

During the festival, which is expected to draw as many as 350,000

people, organizers hope to beat the world record for the number of people in a

single day. The festival is being organized by the Edmonton Heritage Days Association, which was established by a British and Irish caravan in 1982.

"It lifted four tents up and sent them flying," Timperley said. The festival court will be open from 10 a.m. to 5 p.m. Sunday afternoon.

Hawrelak Park has been closed

We didn't shut the park in 1987. We worked with The City and the Province to rebuild in a single day...

"They weren't just blown over,

Hawrelak Park has been closed

We didn't shut the park in 1986 when we built the Amphitheatre. We worked with Administration to make a better City for all of us.





**We can work together to keep the park open.
It's worth it.**