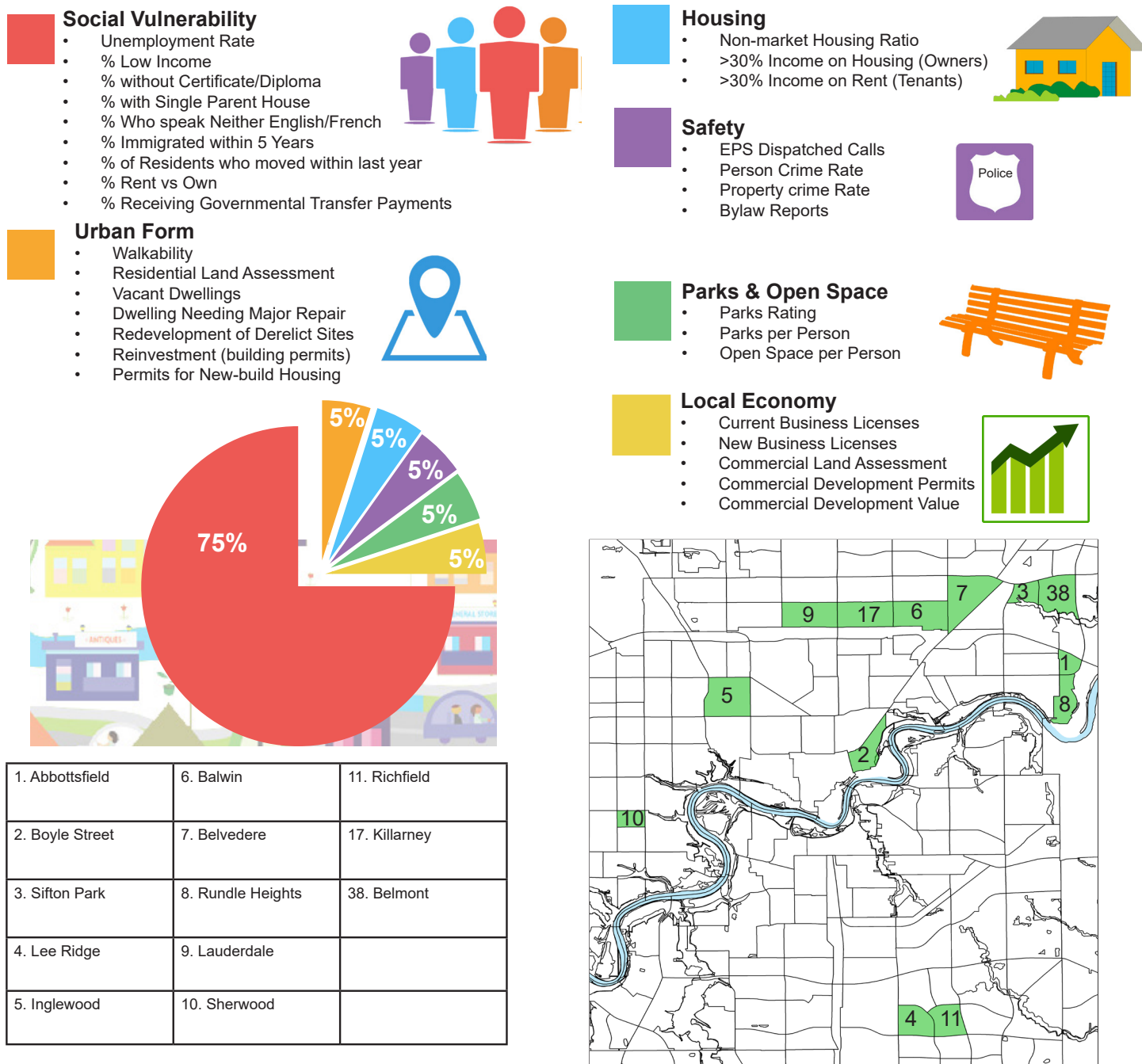


The updated method to shortlist potential neighbourhoods for future revitalization initiatives uses a broader set of 31 metrics from the Stewarding Great Neighbourhoods dataset. Intended to identify neighbourhoods that would benefit most from integrated social and capital investments, the measure of revitalization need maintains prioritization of social measures by weighting the Social Vulnerability Index as the predominant measure, and introduces five additional indicator categories: Urban Form, Housing, Safety, Parks and Open Space, and Local Economy. The broader set of metrics provides a new framework for a more holistic and integrated approach for selecting, monitoring and evaluating revitalization work.



1. Abbotsfield	6. Balwin	11. Richfield
2. Boyle Street	7. Belvedere	17. Killarney
3. Sifton Park	8. Rundle Heights	38. Belmont
4. Lee Ridge	9. Lauderdale	
5. Inglewood	10. Sherwood	

Considering neighbourhoods adjacent to the shortlisted 11 neighbourhoods, two additional neighbourhoods with relatively high revitalization need were added: Killarney (#17th) and Belmont (#38).

Neighbourhoods currently involved in Council-approved revitalization initiatives were excluded from the calculation (Avenue Initiative (Alberta Avenue, Cromdale, Delton, Eastwood, Elmwood Park, Parkdale, Spruce Avenue, Westwood); Jasper Place Revitalization Strategy (Britannia-Youngstown, Canora, Glenwood, West Jasper Place); McCauley Revitalization Strategy; Central McDougall/Queen Mary Park Revitalization Strategy).