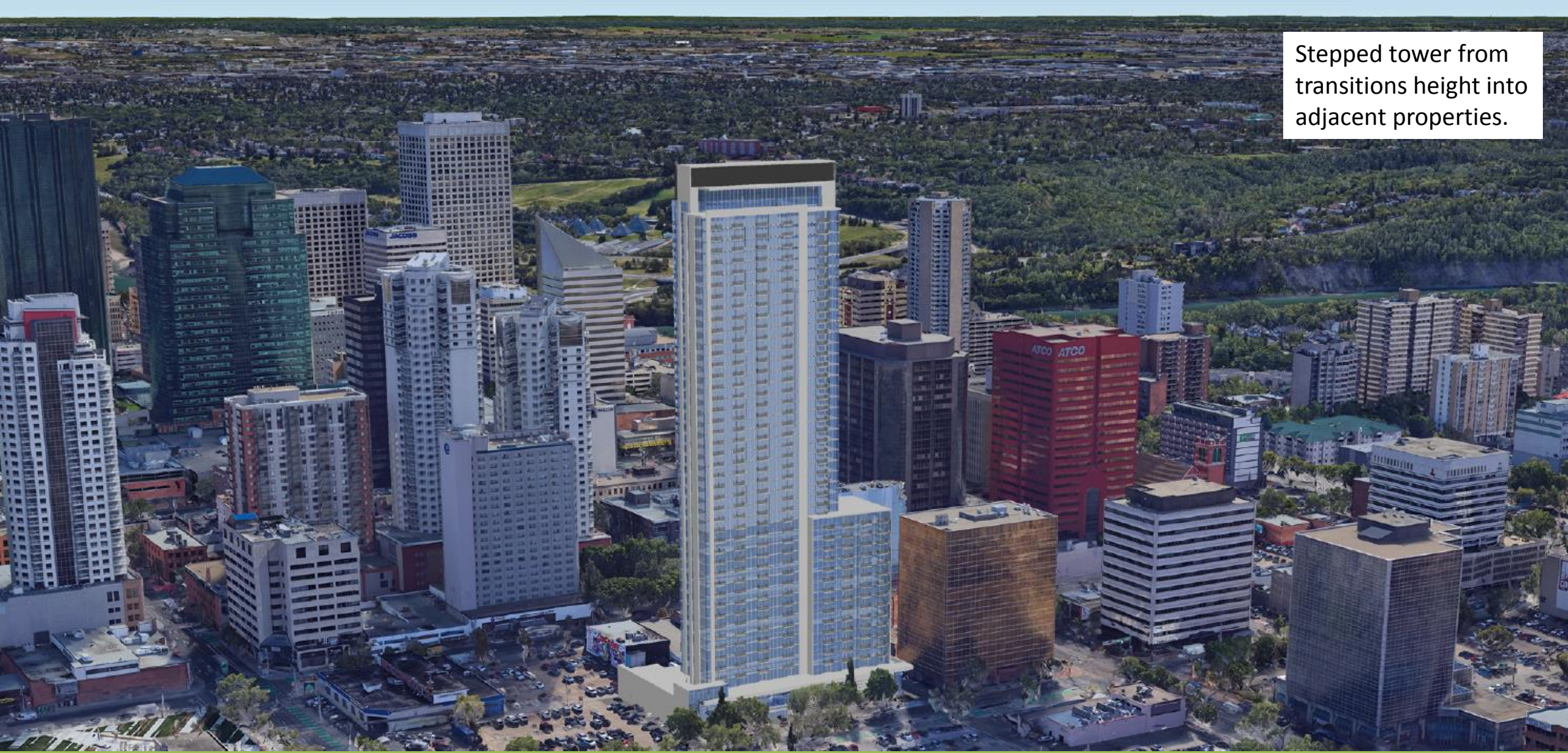




# DC2 Rezoning Charter Bylaw 19785 Westrich - 106 Street Downtown



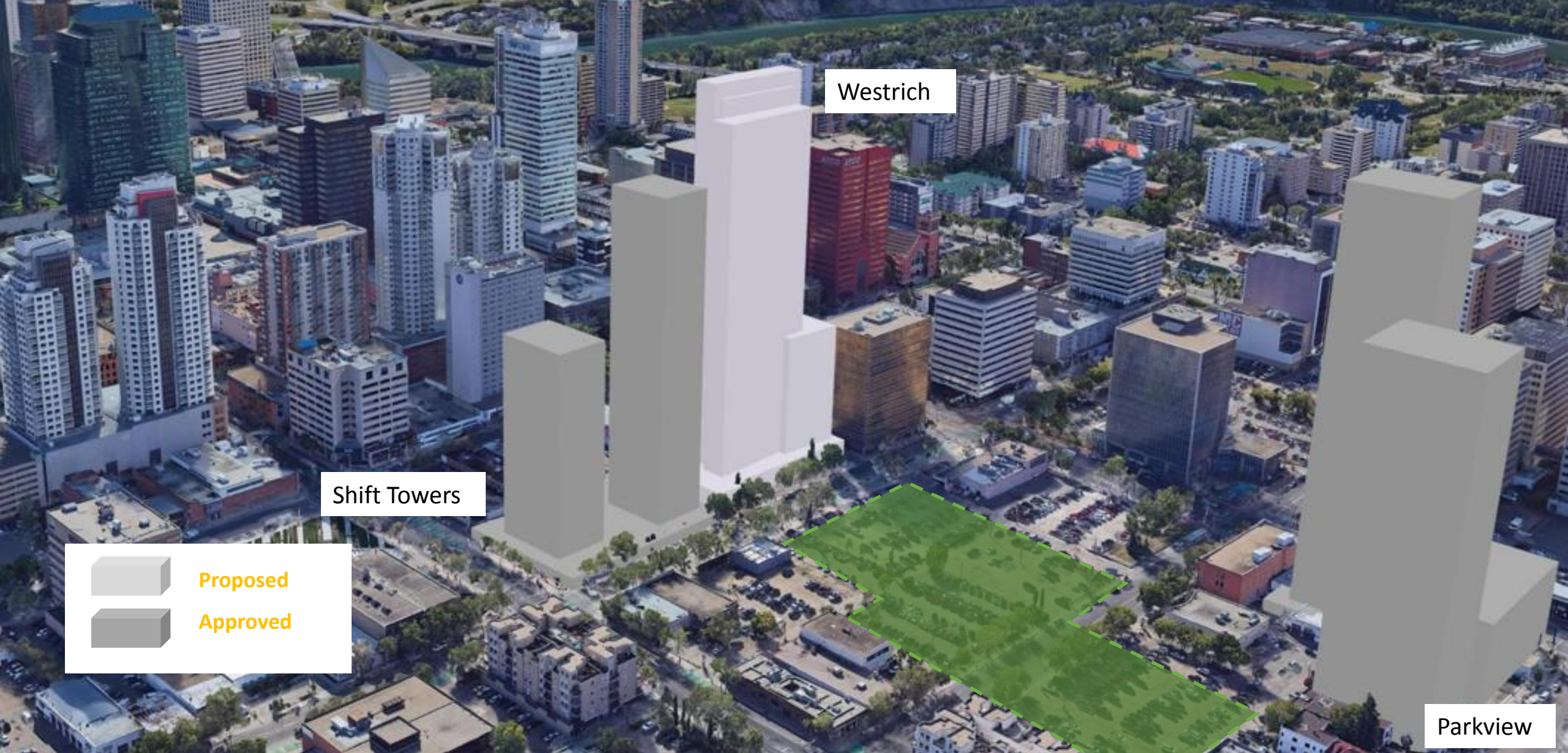
Stepped tower from transitions height into adjacent properties.



Vision



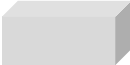





Westrich

Shift Towers

Parkview



Proposed



Approved

# Emerging Context



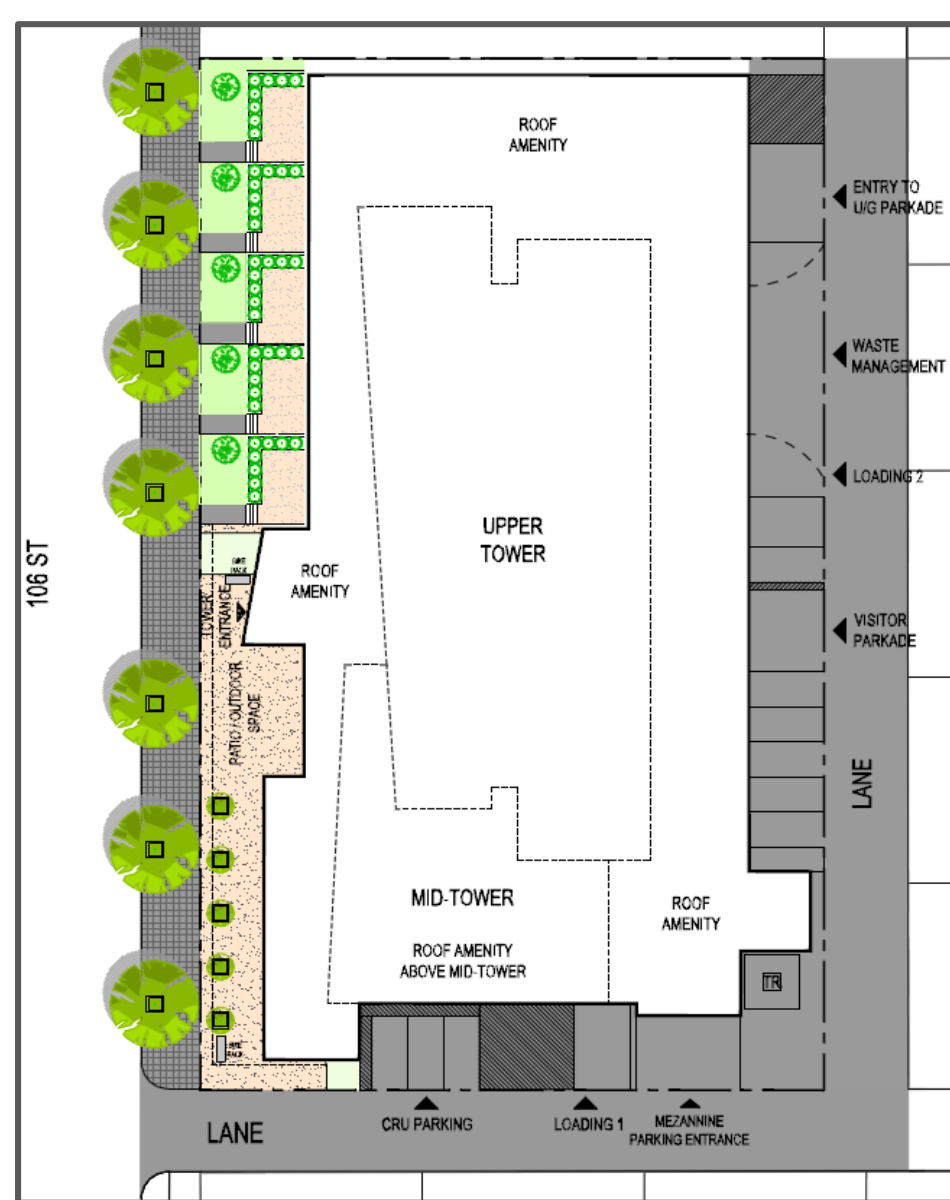




Slender north-south tower designed to reduce shadows and improve privacy to the north.



Design Intent



Mixed-use on 106 Street will provide passive surveillance and passive illumination for cyclists and future park site

## Podium Design



Architecture intended to frame the new park and present attractive east face toward downtown and exposed south façade.



## Tower Living



Thank you



DC2 Rezoning Charter Bylaw 19785  
Westrich - 106 Street, Downtown

**WESTRICH**  
PACIFIC CORP.

**GSA**  
Green Space Alliance