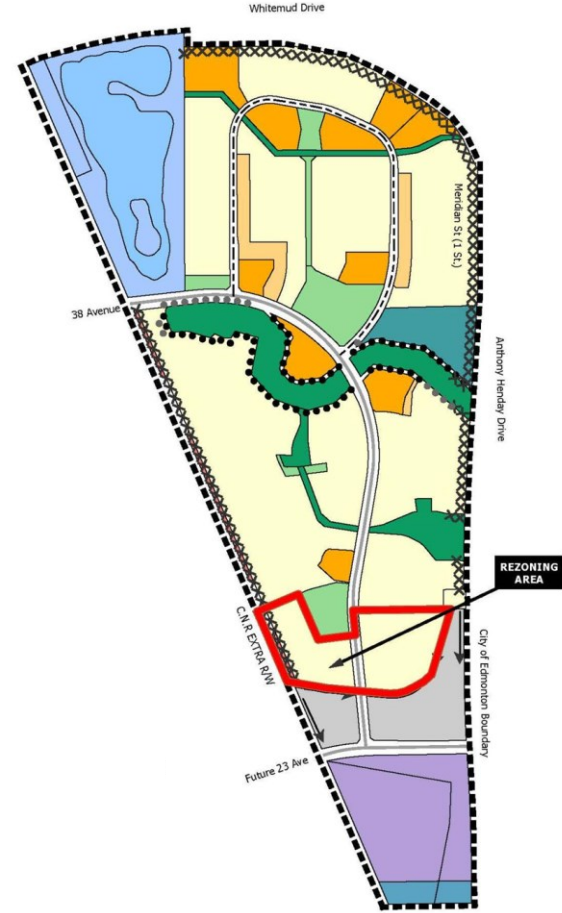
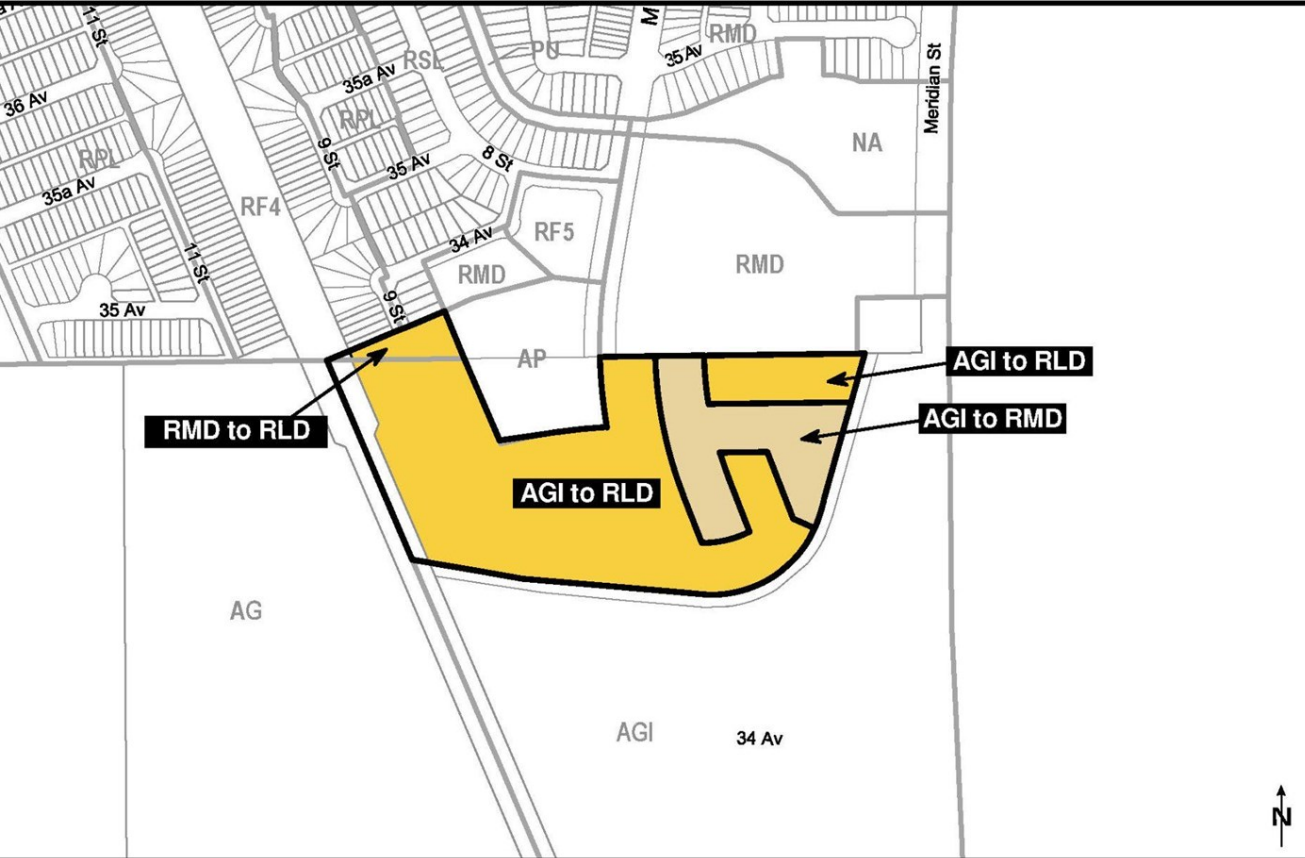




ITEM 3.2
CHARTER BYLAW 19904
MAPLE

DEVELOPMENT SERVICES
DECEMBER 7, 2021





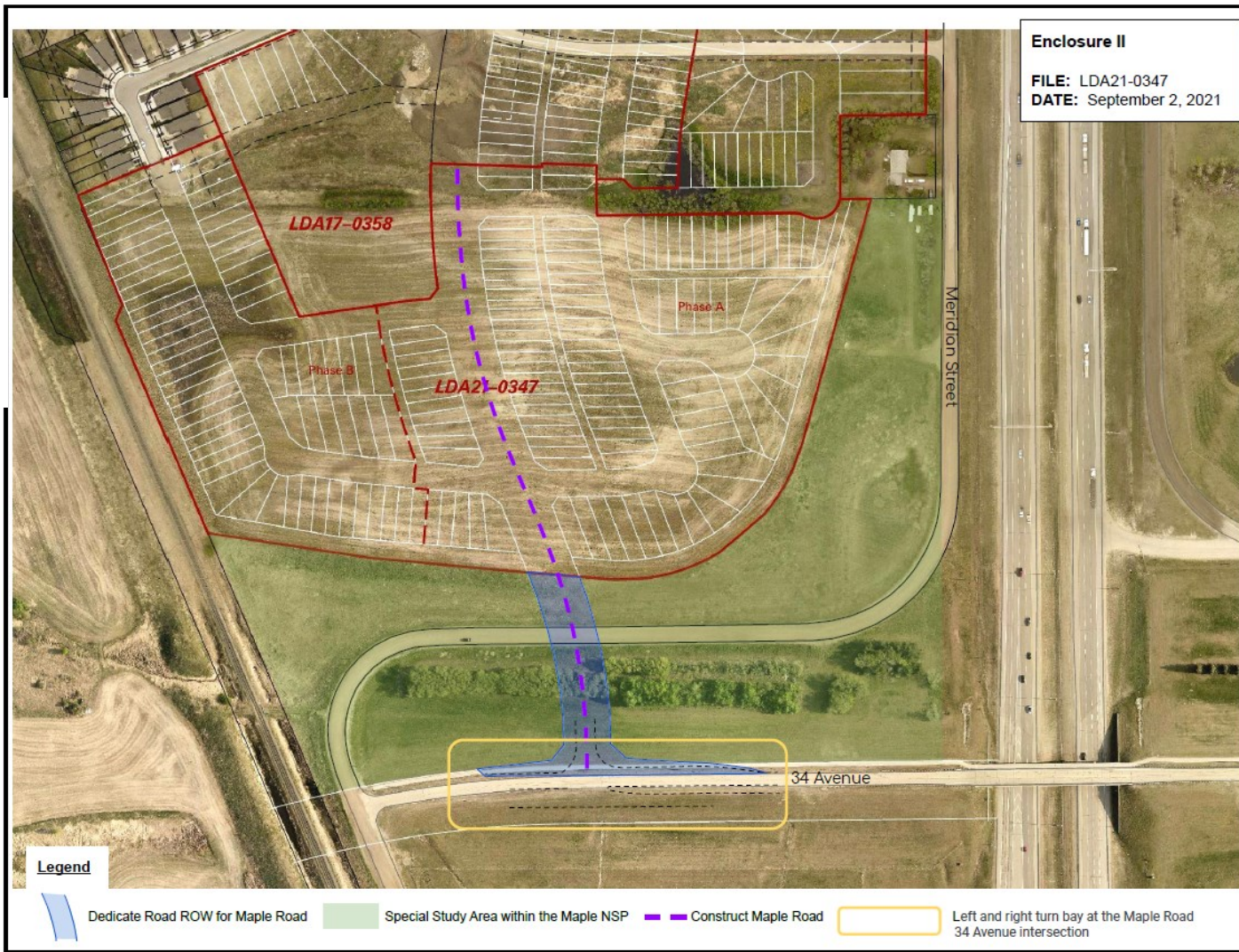
Location of stormwater management facilities are subject to minor revisions during subdivision and rezoning of the neighbourhood and may not be developed exactly as illustrated.



ADMINISTRATION'S RECOMMENDATION: **APPROVAL**

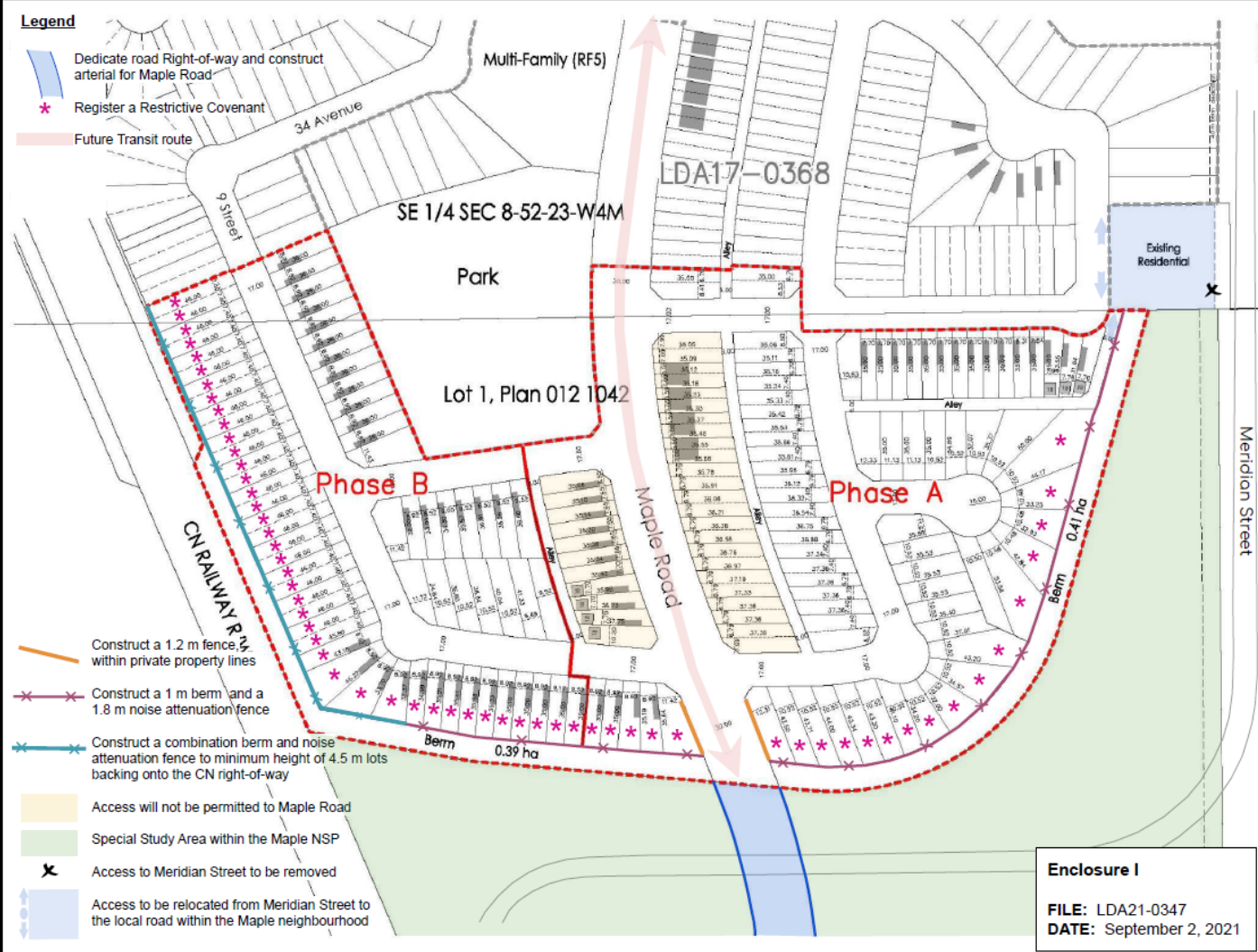
TRANSPORTATION

MAPLE ROAD EXTENSION



TRANSPORTATION

PROPOSED SUBDIVISION



Enclosure I
FILE: LDA21-0347
DATE: September 2, 2021