

Presentation to City Council

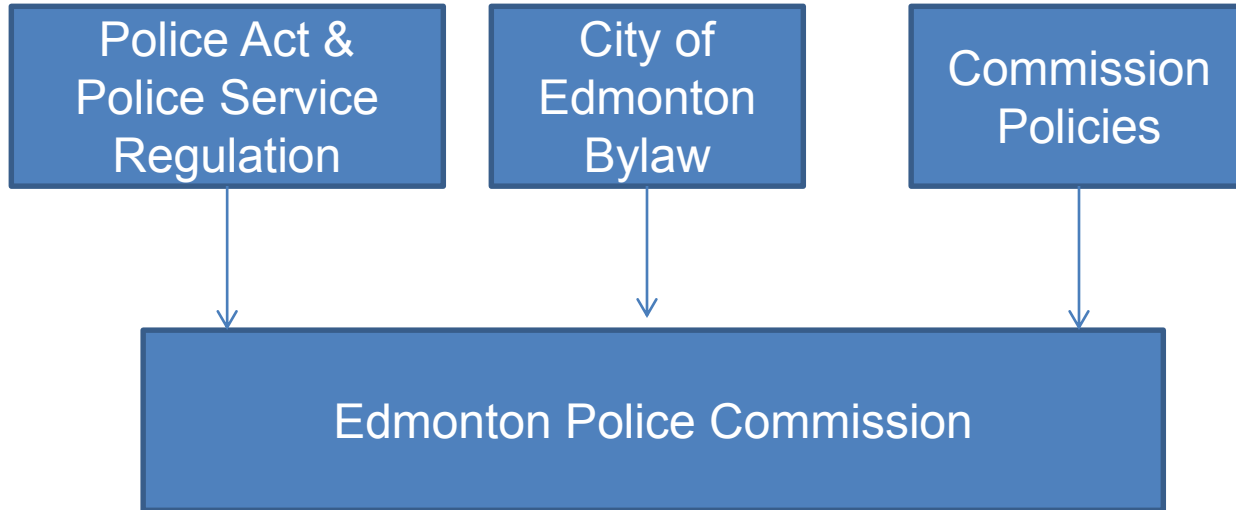
December 8, 2021



Guardian of Public Trust



AUTHORITY & ACCOUNTABILITY





POLICE ACT

Commission

- Allocates council funds
- Ensures sufficient staffing levels
- In consultation with the Chief, prepares the proposed budget
- Submits a yearly plan specifying the level of police service and programs to council

Council

- Gathers information to assess efficiency and financing requirements of the police
- Policing must be provided at a level that is adequate and effective



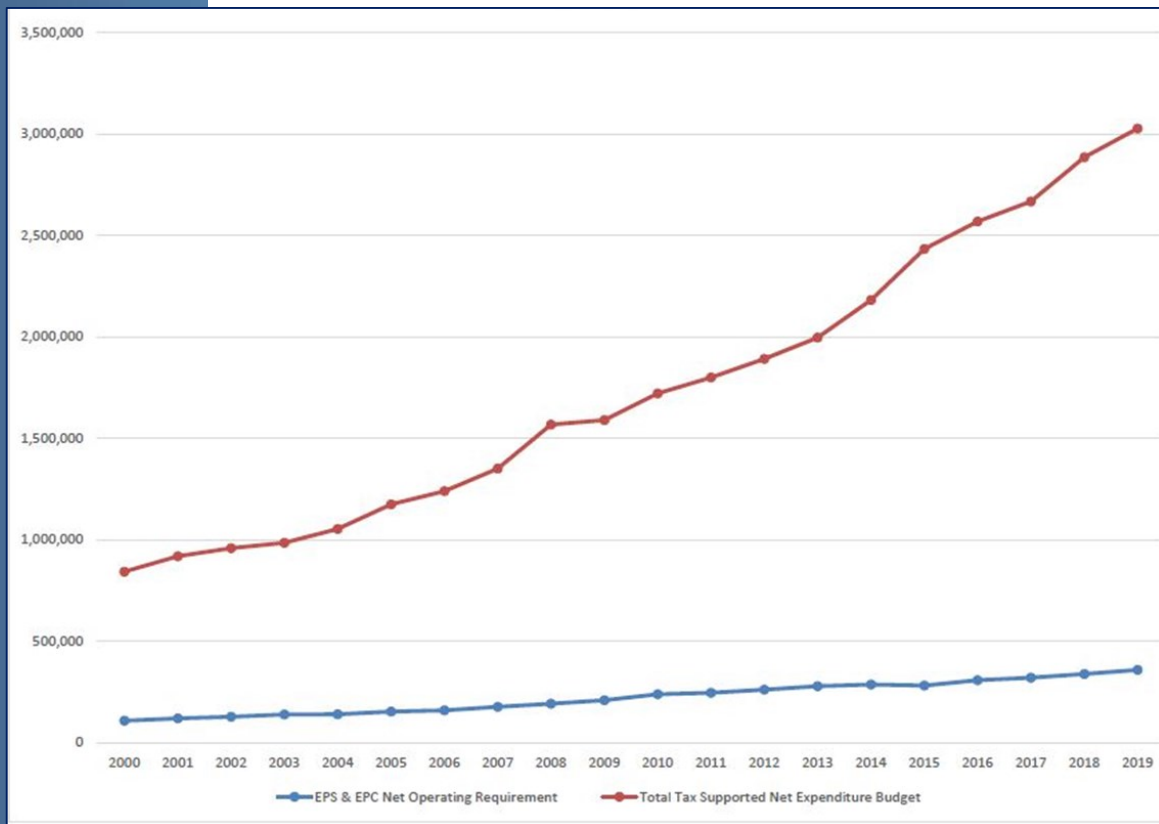
Commission's Vision

Policing is changing and being successful in:

- Working smarter,
- Partnering with the community, and
- Decreasing calls for service by diverting people from the arrest/ remand/ release cycle.

City vs EPS Growth

- EPS has grown at a rate that represents **25% less than** the City's growth rate.
- EPS also represents a lower impact on every tax dollar.
- 12.7% of every tax dollar in 2000 went to police.
- In 2019, 11.8% went to police.



Calls for Service (CFS)

Overall volume of CFS city wide decreased **-7%** in the last 12 months (from 188,109 to 174,920).



However, this still equates to:

- **479** calls per day.
- **20** calls per hour.
- One call **every three minutes.**



Violent Crime Rate and Crime on Edmonton Transit



Downtown Edmonton experienced a 16% increase in average crime severity over the last four years while the rest of the city experienced only a 2% increase.



The volume of assaults within Downtown Division increased by 14% over the last year and by 11% pre-pandemic.



50% of the top 10 occurrence types involving EPS that occurred at LRT/transit centres over the last year were violent.

Citywide

Occurrence Type

Family Disputes
Trouble With Person
Shoplifting \$5,000 or under
Theft from Automobile Under
Mischief
Check On Welfare
Mental Health Act
Remain At Scene - Hit & Run
General Complaints
Assault

Total

10394
9594
8469
5965
5808
5249
4562
4247
3519
3160

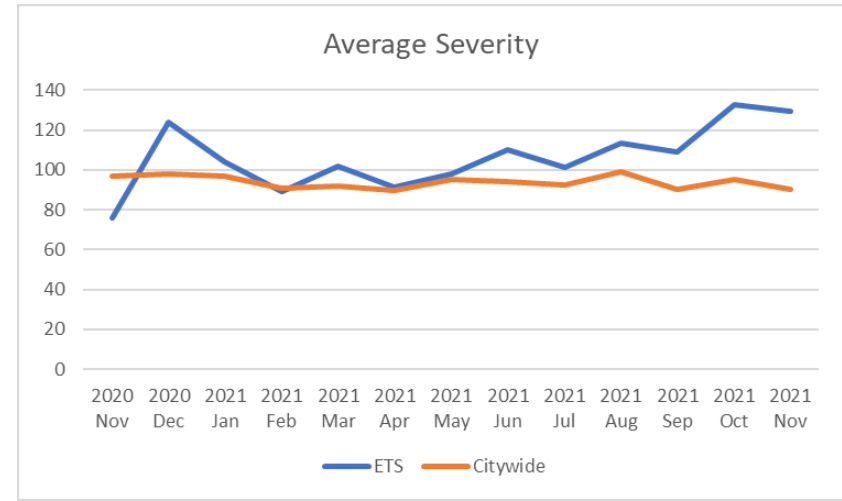
ETS

Occurrence Type

Trouble With Person
Assault
Assault - Bh/Weapon
Possession Of Weapons
Intoxications
Mischief
Mental Health Act
Theft Under
Robbery - Personal
Assault - Other Officer

Total

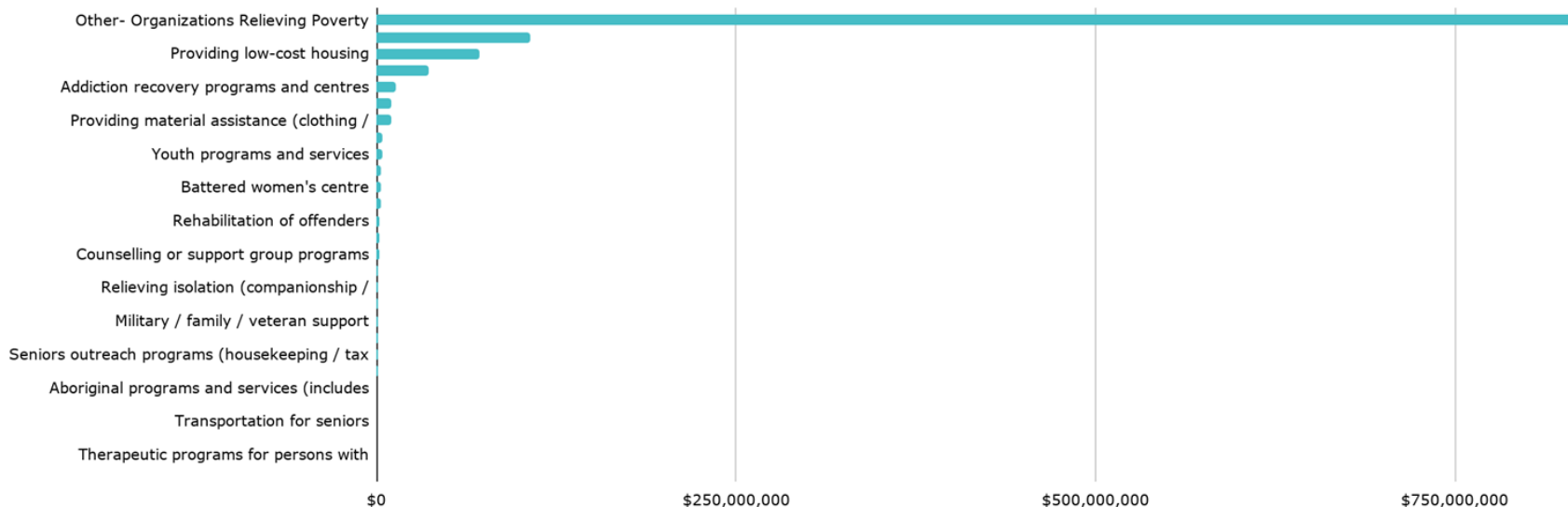
155
110
95
63
62
54
31
30
25
23



What are we funding?

In 2018, \$1.1B went to charities that support work to intervene/ prevent social issues related to homelessness, poverty, addiction, mental health excluding public institutions responsible for health (hospitals).

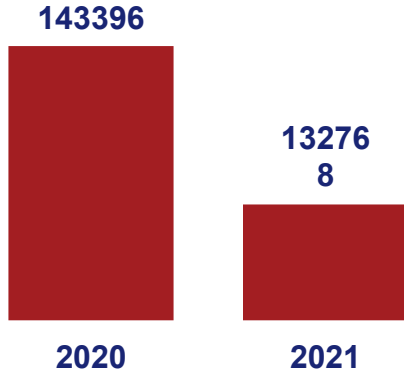
2018 Edmonton Charity Revenues w/ Relevance to Homelessness, Mental Health, Addictions - excluding public health



HELP's Impact



EPS' calls for service YTD (Sept 30, 2021)



Event types with the largest decreases:

- Trouble w/Person -12% (-1882)
- Trouble w/Intoxicated Person -20% (-1461)
- Theft under \$5000 -17% (-905)
- Suspicious Persons -24% (-851)
- Trouble Not Known -9% (-603)



As of June 30, 2021, HELP documented **572 requests**.



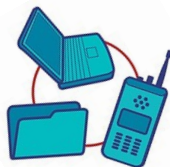
82% of referrals originated from an EPS **patrol division**; 30% were from Downtown Division alone.



Persons referred to HELP generated **3294 police-reported occurrences** and **1533 disorder indicator violations** during the 9 months prior to referral.

Financial Impacts

Not only have we had an \$11 million reduction, we've had to afford:



Transforming data for best use through a Records management system modernization
= \$700,000



In-car video, promised as a result of the Task Force
= \$1.5 million



Enterprise Commons capital project is the best use of technology, but at an unexpected cost
= \$2.2 million



Lost 100,000+ operational hours due to COVID-19
= \$7.5 million

One-Time Costs

Annual Costs



Impacts from provincial government changes (Traffic Safety Act revenue and biological testing)
= ~\$5 million



Truth and Reconciliation Day STAT time. It's the right thing to do, but comes at a cost
= \$1 million



Decision by EPSB to terminate SROs in Public Schools
= \$1.3 million