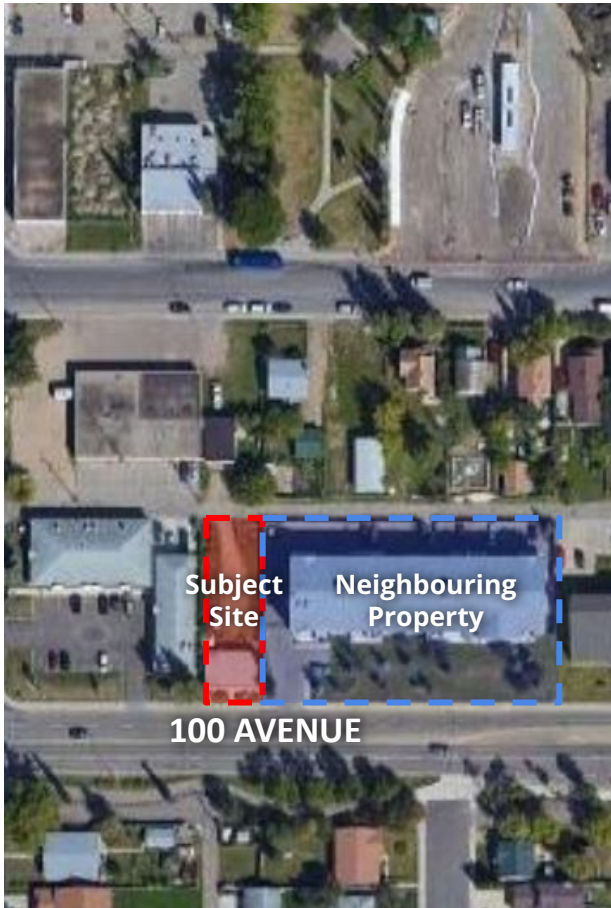


ITEM 3.8
CHARTER BYLAW 19925
GLENWOOD

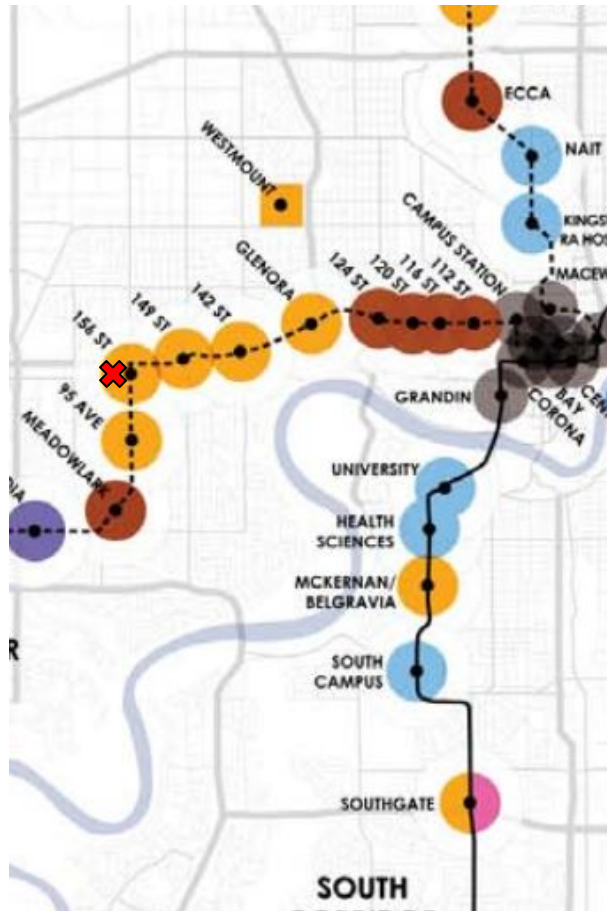
DEVELOPMENT
SERVICES
JAN 25, 2022







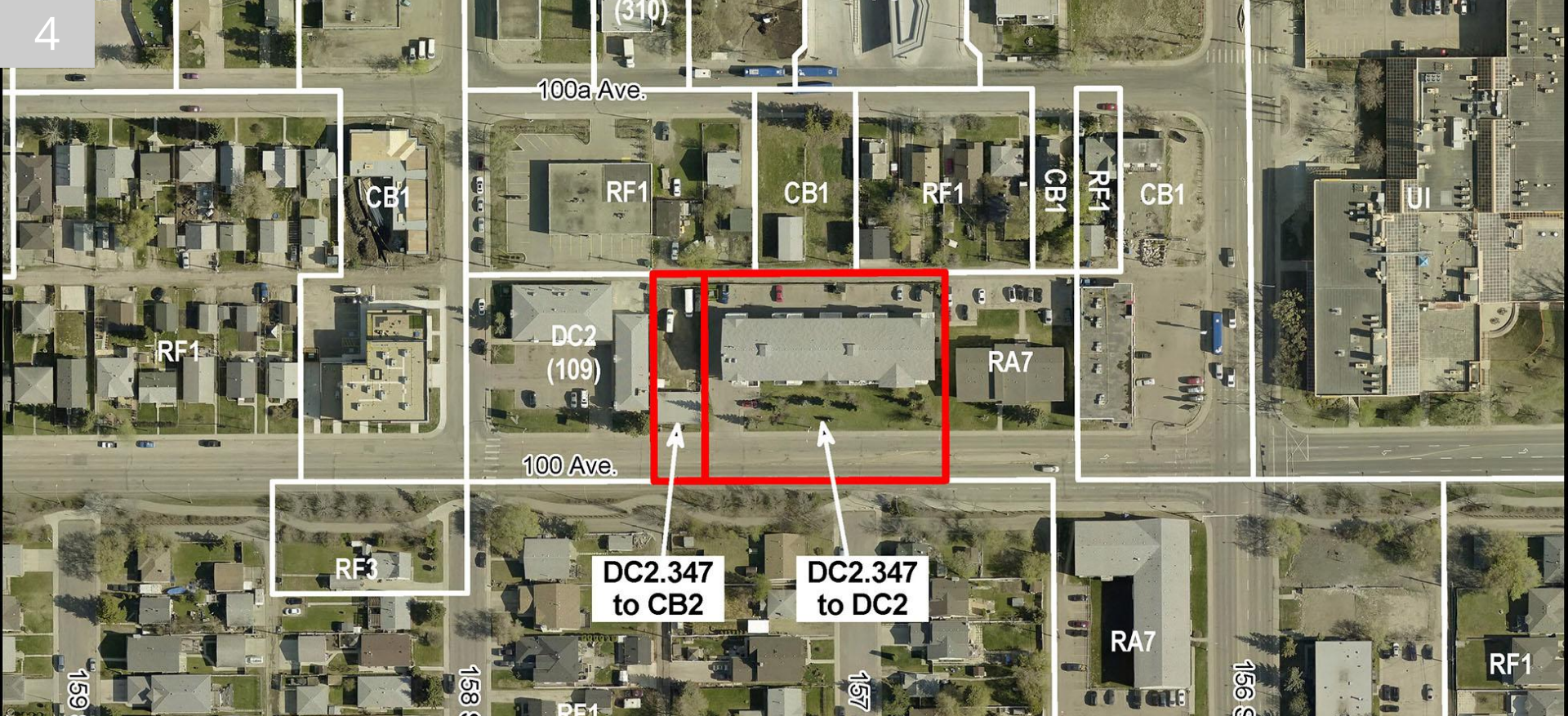
SITE VIEW



TOD GUIDELINES

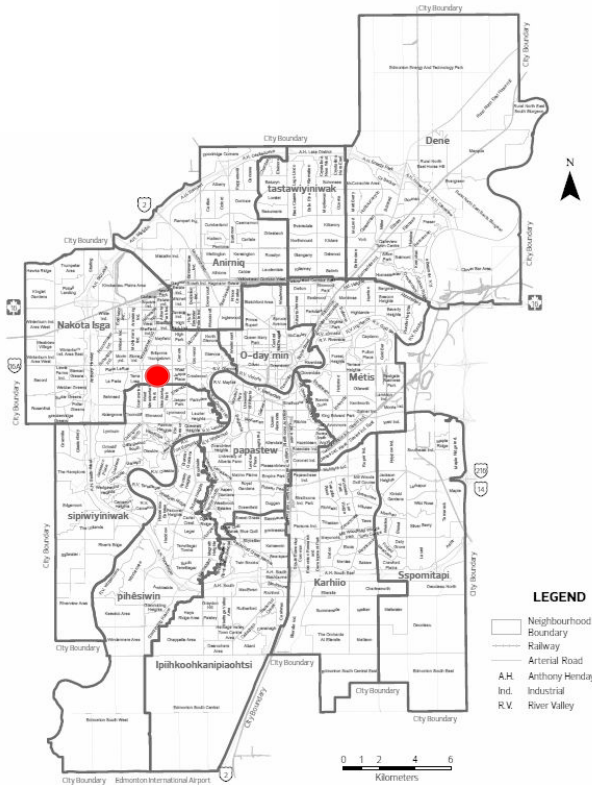


THE CITY PLAN



ADMINISTRATION'S RECOMMENDATION: **APPROVAL**





GLENWOOD

Population **5,365**

Population Net Density **60.0 population/ha**

Dwelling Units **2,235**

Dwellings Density: **25.1 units/ha**

Private Dwellings by Structure Type

