

A wide-angle photograph of the Edmonton skyline, featuring several prominent skyscrapers and modern buildings. The image is overlaid with a semi-transparent blue filter. The text "Utility Committee" is written in white, sans-serif font across the middle of the image.

Utility Committee

Residential Waste Diversion Calculation
June 8, 2018

Presented by: Gord Cebryk

Overview of Report

- Diversion calculation methodology:
 - Revised to address feedback from the Office of the City Auditor and to validate alignment with municipal best practice.
 - This report focuses on single unit household (regulated) waste stream only.
 - Additional methodology/measures to be brought forward for the multi-unit and non-residential stream - as well as integrated measures.
 - Reviewed by the auditor as reasonable in approach.
 - Addresses need to:
 - identify accurate and verifiable waste quantities;
 - compare residential waste performance year over year;
 - communicate results of waste diversion programs;
 - inform budgets; and
 - illustrate progress towards 90% diversion goal for single unit residential stream.

Methodology Update

$$\begin{array}{|c|c|c|} \hline \% \text{ Single Unit Residential Waste Diverted} & = & \frac{\text{volume of waste generated by residents} - \text{volume of residential waste to landfill}}{\text{volume of waste generated by residents}} \\ \hline \end{array}$$

Alignment with best practice:

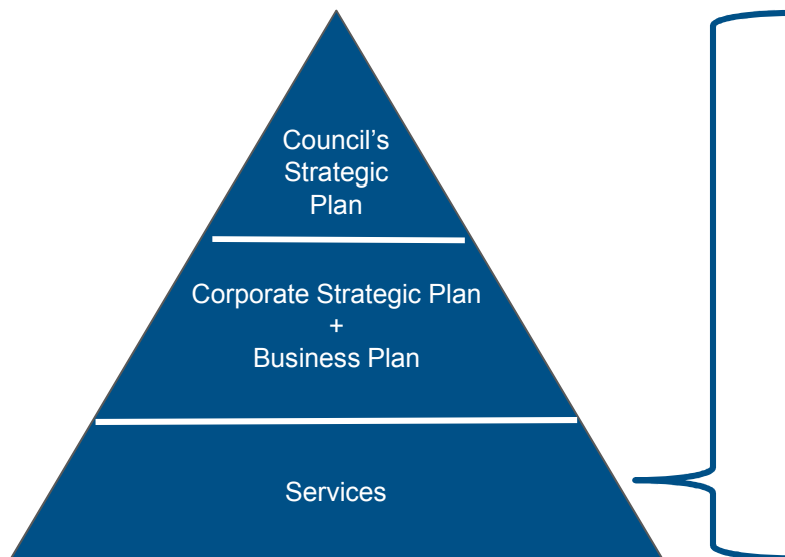
- Edmonton's single unit residential waste diversion calculation methodology aligns with Residential GAP - Manual on Generally Accepted Principles (GAP) for Calculating Municipal Solid Waste System Flow.
- Addresses a need for a common reporting framework to be used by municipalities across Canada to report waste generation, diversion and disposal.
- At this time, there is no standard approach, other than Residential GAP, for measuring solid waste system flow for municipalities in Canada.

Next Steps

- Complete procedural documentation to assess revised assumptions and validate the accuracy of the model.
- Work in tandem with Office of the City Auditor to ensure procedural documentation is sound and the results are accurate and replicable.
- Will bring a revised diversion measure result for 2017 and 2018 projections as this work is completed.
- Align work with overall Performance Management Framework to review, validate and make performance measures across the utility more robust.
- All work aligns with strategic work now underway.

Progress Towards Waste Services Performance Management Framework

Enterprise Performance Management Framework



Examples of potential key performance indicators

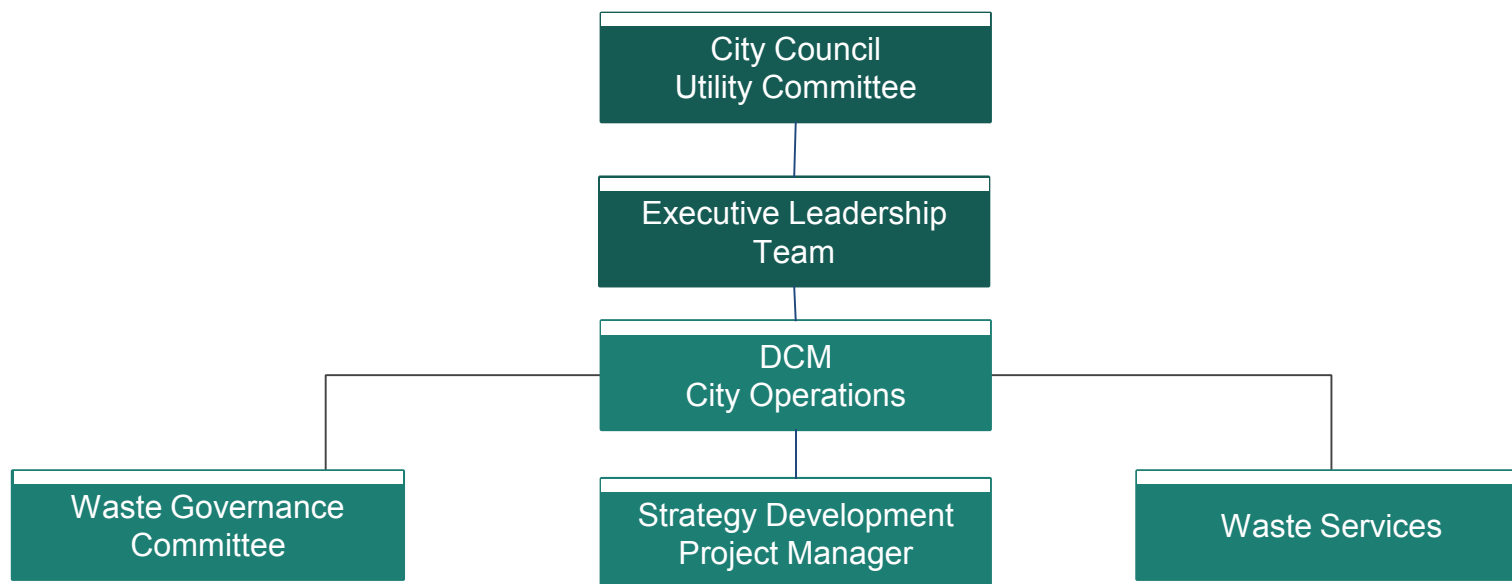
Theme	Past	+ Additional	+ Future
Customer Excellence	Customer Satisfaction Survey Results	Customer Effort Score	TBD
	Number of Users of Eco Stations	Eco Station Utilization Rate	
Operational Excellence	Total Cost per Tonne	Cost Variance to Approved Regulated Rate	
	Percent rate increase	Industrial, Commercial, Institutional Cost Recovery Rate	
	% diversion of residential waste from landfill	Net Residential Waste (Tonnes) to Landfill	
Organizational Excellence	Lost time injury frequency rate	Total Reportable Incident Rate	

Strategy Development

Four phases of work to June 2019

Framing of Strategy Scope / Components	Research, Engagement and Assessment of Strategic Alternatives	Validation, Review and Refinement	Approval / Adaptation and Implementation
June to August 2018	September to December 2018	January to April 2019 Committee/Council Review (June 2019)	June 2019 forward

Governance



Questions

Thank you.
Questions?