

# Alcohol & Public Parks



## Maintaining Edmonton Parks and Picnic Sites as Health-Promoting Environments

# Alcohol use is harmful



Conditions entirely caused by alcohol lead to  
as many hospitalizations as do heart attacks

**258**  
per 100,000  
in 2019



**241**  
per 100,000  
in 2019



(Source: CIHI, 2019)

# Alcohol use is harmful

## Hospitalizations entirely caused by alcohol

As many as

**16**

**children  
and youth  
a day**

**age 10 to 24**

(as many males as females)



**Age  
45 to 64**

**Adults in middle age**  
(twice as many men as women)  
make up about

**1/2**

**of these  
hospitalizations**

(Source: CIHI, 2019)

# There is no safe level of alcohol consumption for cancer

All types of alcoholic beverages are linked to cancer, with the primary carcinogenic compound being ethanol.



Photo Reference: Sample of cancer warning labels and low risk drinking labels in AMAP guide

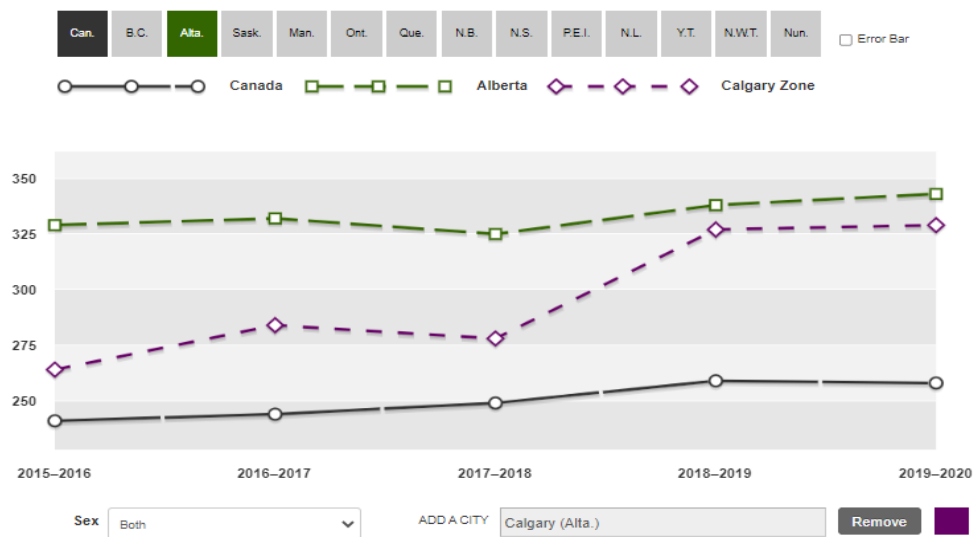
# Hospitalizations entirely caused by alcohol

Comparison of hospitalizations entirely caused by alcohol (highest to lowest) in **Alberta**, **Calgary (left)**, **Edmonton (right)**, **Canada**

## Hospitalizations Entirely Caused by Alcohol (per 100,000)

Display up to 3 provinces or territories by selecting the boxes. Deselect to remove comparators. You can also ADD a city to find results for its health region or ADD a hospital, using the search boxes below. At least 3 years of data must be available for trend results to appear on the graph. The graph will refresh when you select a filter.

The filtered data will be reflected in the downloadable Excel file, available by selecting Data Export following the graph.



Lower is better. Lower rates may indicate better strategies to reduce burden from alcohol harm. This indicator includes hospital stays in general, psychiatric and day surgery facilities; examples could be a person with liver cirrhosis due to alcohol who is at the end of their life, a person who was injured while under the influence of alcohol and a person experiencing seizures due to alcohol withdrawal.

Source: Canadian Institute for Health Information.

Data Export

## Hospitalizations Entirely Caused by Alcohol (per 100,000)

Display up to 3 provinces or territories by selecting the boxes. Deselect to remove comparators. You can also ADD a city to find results for its health region or ADD a hospital, using the search boxes below. At least 3 years of data must be available for trend results to appear on the graph. The graph will refresh when you select a filter.

The filtered data will be reflected in the downloadable Excel file, available by selecting Data Export following the graph.



Lower is better. Lower rates may indicate better strategies to reduce burden from alcohol harm. This indicator includes hospital stays in general, psychiatric and day surgery facilities; examples could be a person with liver cirrhosis due to alcohol who is at the end of their life, a person who was injured while under the influence of alcohol and a person experiencing seizures due to alcohol withdrawal.

Source: Canadian Institute for Health Information.

Data Export

Source: Canadian Institute for Health Information (CIHI)

# Impacts of alcohol consumption on others (2<sup>nd</sup> hand harms)

Fetal alcohol spectrum disorder

Underage access to alcohol by children and youth

Unintentional alcohol poisoning of children in unsupervised alcohol settings

More modeling of drinking and alcohol exposure

Demand on bylaw, security, and police resources

Municipal liability for alcohol's impact on others in public spaces

Workplace absenteeism, presentism, injury, damage of equipment, liability

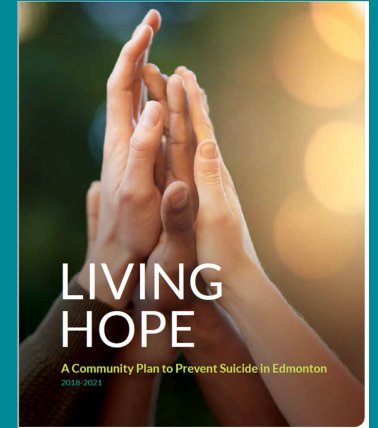
Impaired drink driving injury and death (on land and waterways)

Depression, anxiety and other mental health concerns

Suicide

Intimate Partner and Family Violence

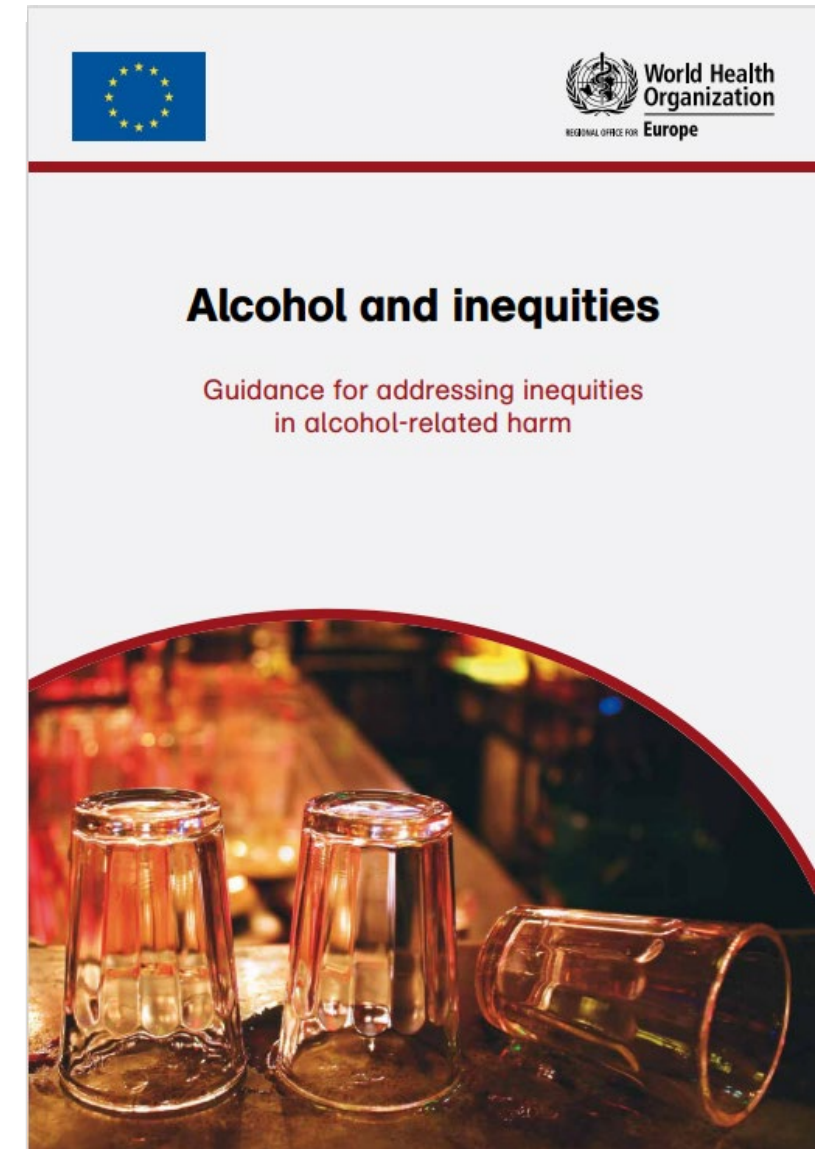
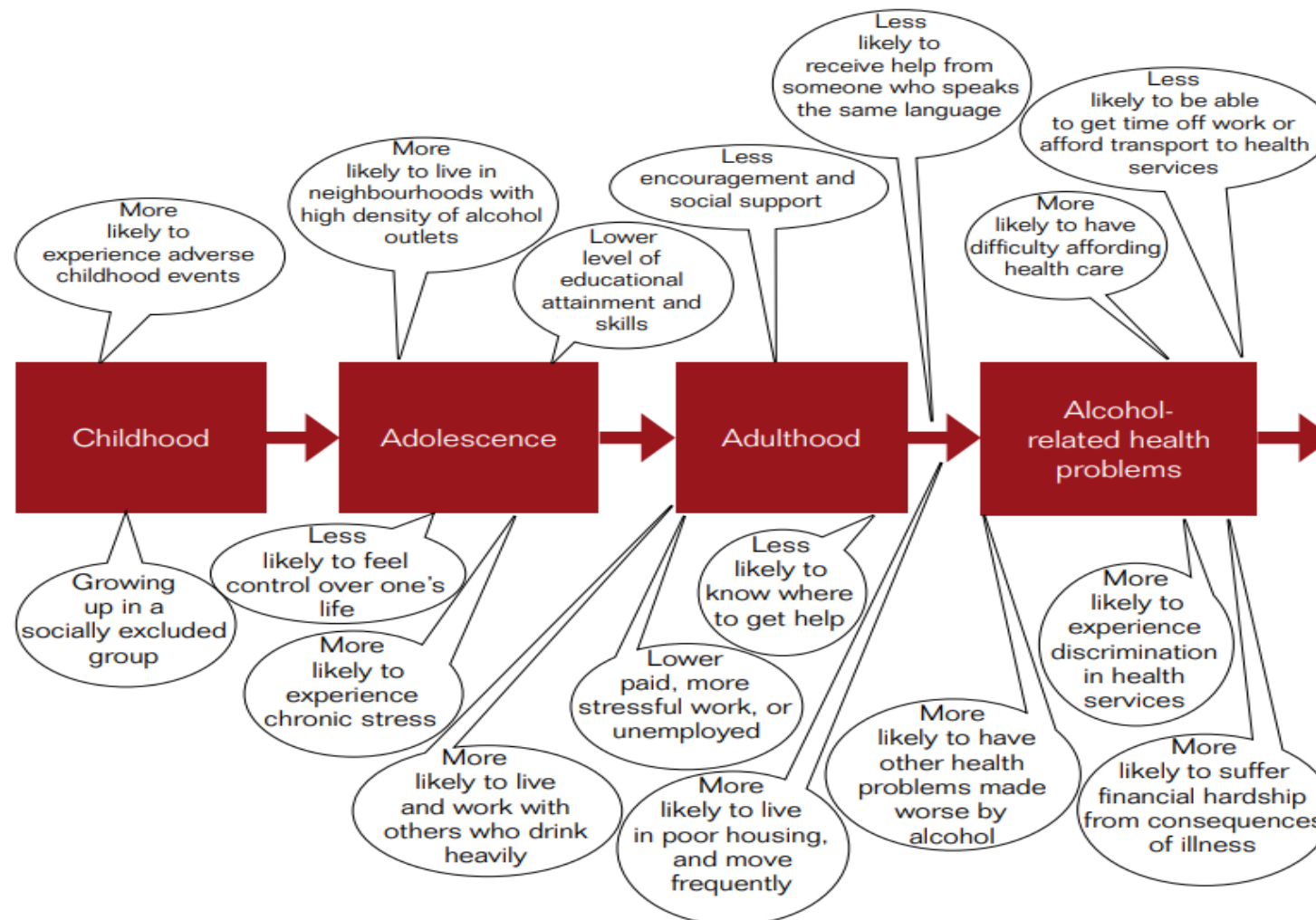
Alcohol-related aggression and sexual assault in the community





# Inequities and alcohol related harm

Fig. 5. How inequities in alcohol-related harm compound over the life course



---

# The Alcohol Deficit

“Though revenue from alcohol sales has been - described as a benefit to public coffers, accounting that includes costs incurred shows that all provinces and territories in Canada are running **an alcohol - deficit**, totaling **\$3.7 billion nationally**”.



# Alcohol use is costly



In 2018, the net costs of alcohol exceeded its revenues with all provinces and territories running a deficit (CSUCH 2020).



University  
of Victoria

Canadian Institute  
for Substance  
Use Research

Institut canadien  
de recherche sur  
l'usage de substances

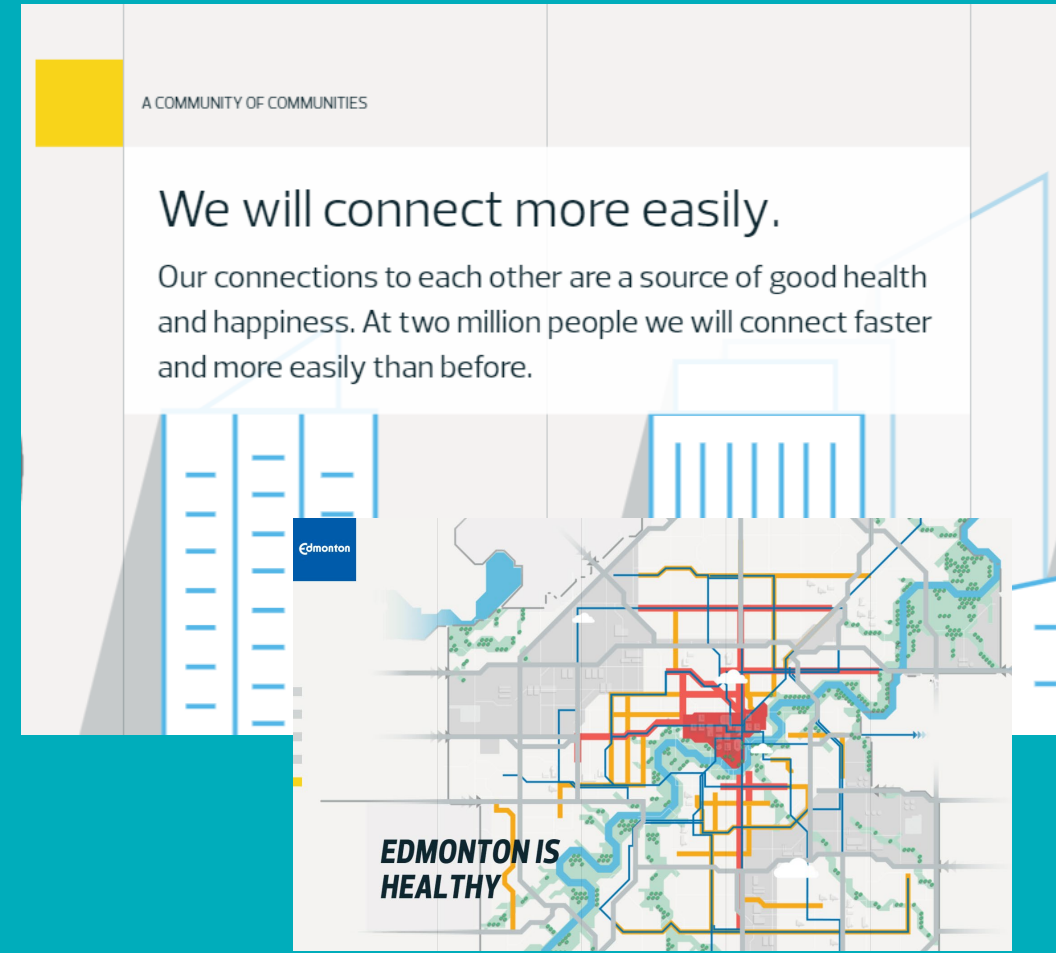
camh  
Centre for Addiction and Mental Health  
Centre de toxicomanie et de santé mentale

In 2017, alcohol cost Alberta **\$2.596 billion** dollars  
(CSUCH 2020)

# Parks, part of our Healthy City strategic goal



A space where  
connectedness  
and recreation  
flourishes  
without  
substance use



Healthy Albertans.  
Healthy Communities.  
**Together.**

**Thank you for supporting healthy  
public policies for Edmonton.**

**Edmonton Zone Medical Officers of Health**