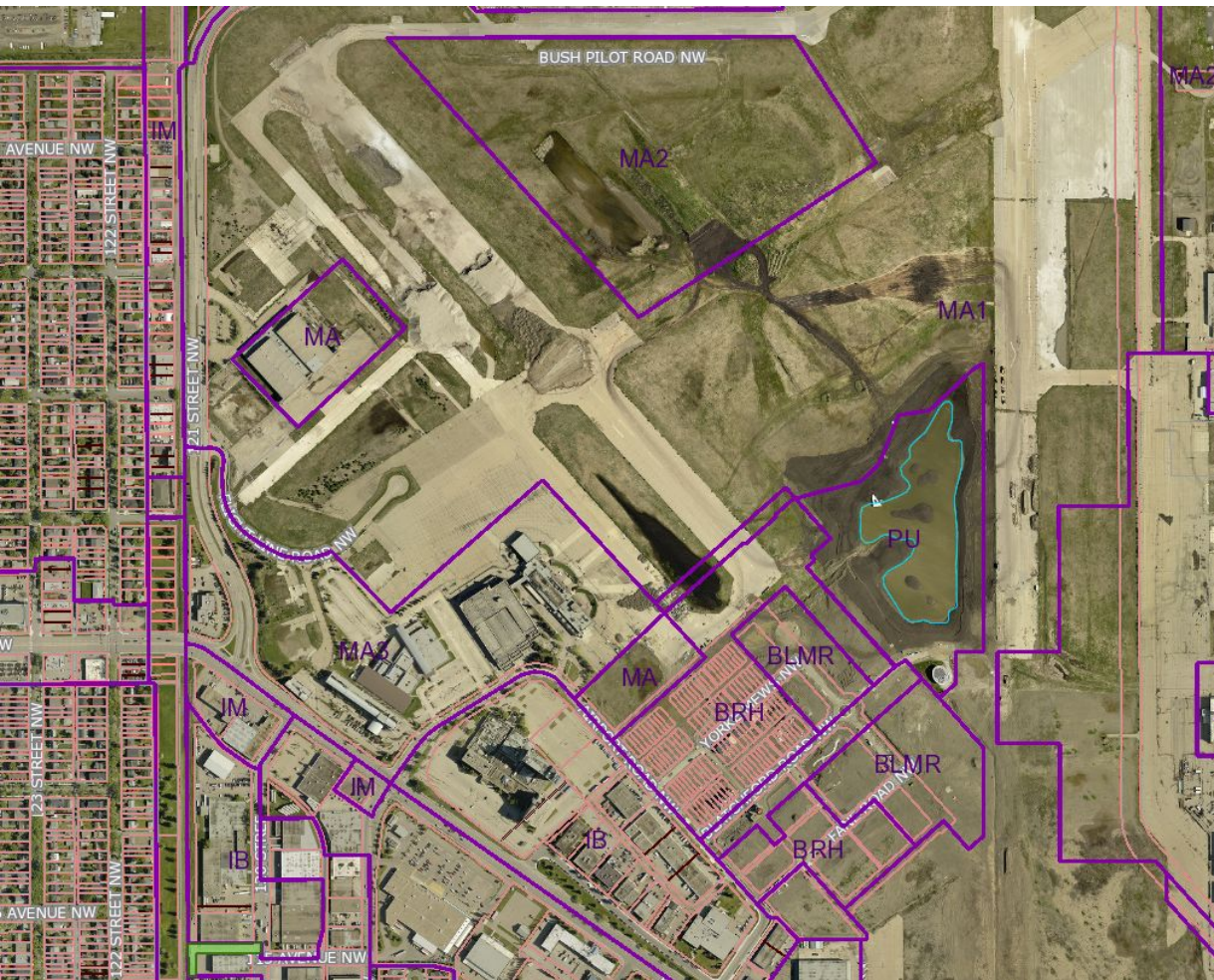


# ITEM 3.1 CHARTER BYLAW 19946 BLATCHFORD



DEVELOPMENT SERVICES  
Feb 8, 2022

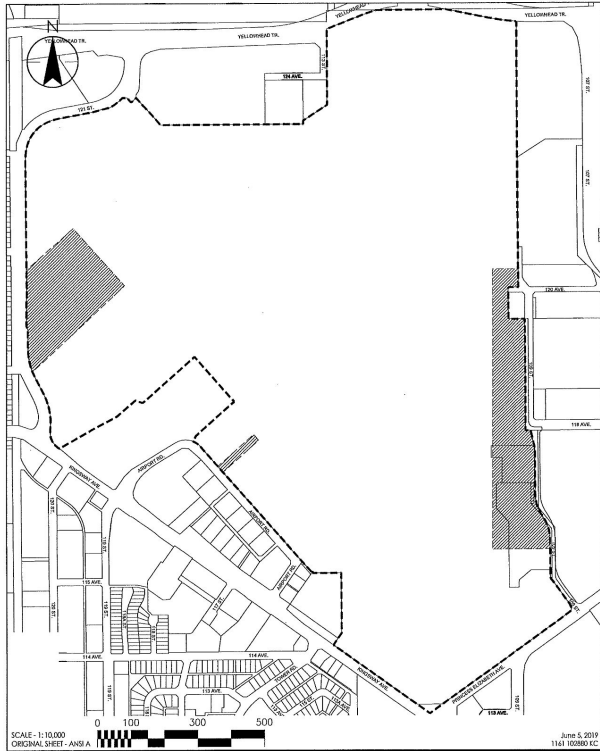


# TEXT AMENDMENT ENVIRONMENTAL OVERLAY

## Current Overlay

4/4


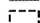
SCHEDULE "B"



SCALE - 1:10,000  
ORIGINAL SHEET - ANS1A

June 5, 2019  
1161 102800.EC

### LEGEND:

-  AREAS REQUIRING ENVIRONMENTAL TESTING AND POTENTIAL REMEDIATION
-  BLATCHFORD ENVIRONMENTAL OVERLAY BOUNDARY

NOTE: AREAS REQUIRING ENVIRONMENTAL TESTING AND POTENTIAL REMEDIATION REFLECT AN ADDITIONAL 25m BUFFER AROUND AREAS OF POTENTIAL CONCERN

Client/Project

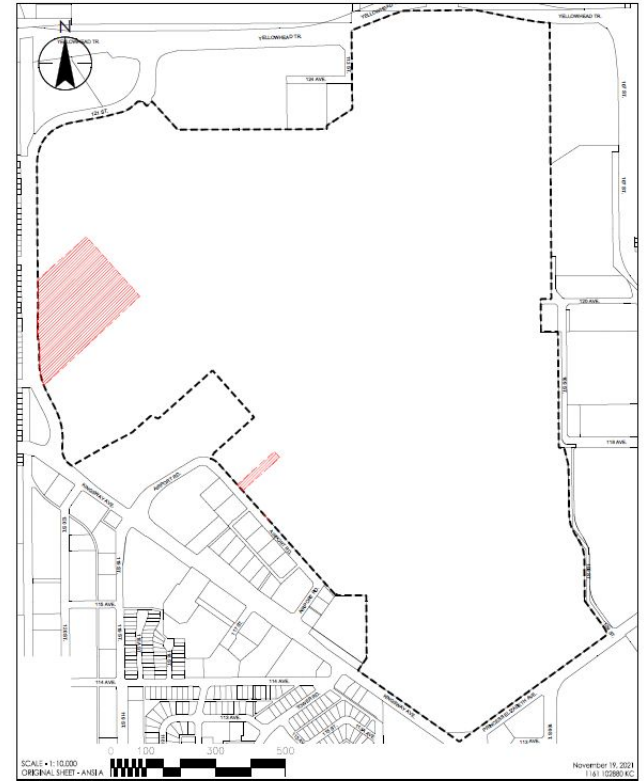
CITY OF EDMONTON  
BLATCHFORD  
NEIGHBOURHOOD

Figure No.  
Appendix I

Title

ENVIRONMENTAL  
OVERLAY

## Proposed Overlay



SCALE - 1:10,000  
ORIGINAL SHEET - ANS1A

November 19, 2021  
1161 102800.EC

### LEGEND:

-  AREAS REQUIRING ENVIRONMENTAL TESTING AND POTENTIAL REMEDIATION
-  BLATCHFORD ENVIRONMENTAL OVERLAY BOUNDARY

NOTE: AREAS REQUIRING ENVIRONMENTAL TESTING AND POTENTIAL REMEDIATION REFLECT AN ADDITIONAL 25m BUFFER AROUND AREAS OF POTENTIAL CONCERN

Client/Project

CITY OF EDMONTON  
BLATCHFORD  
NEIGHBOURHOOD

Figure No.

1.0

Title

ENVIRONMENTAL  
OVERLAY



10160-112 Street  
Edmonton, AB T5K 2L6  
www.stantec.com