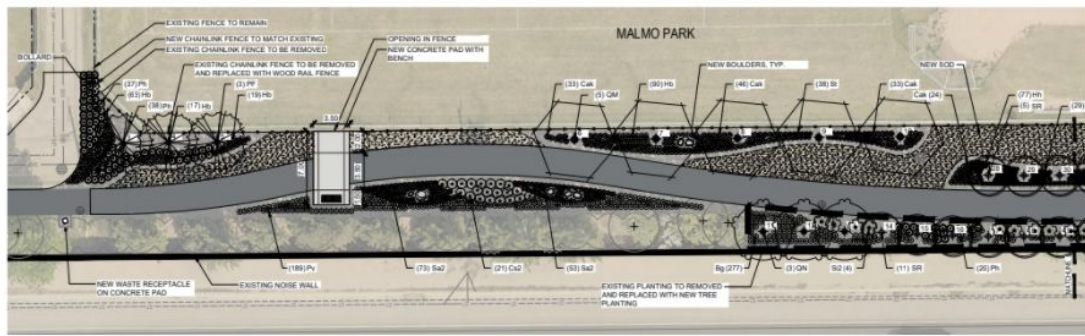


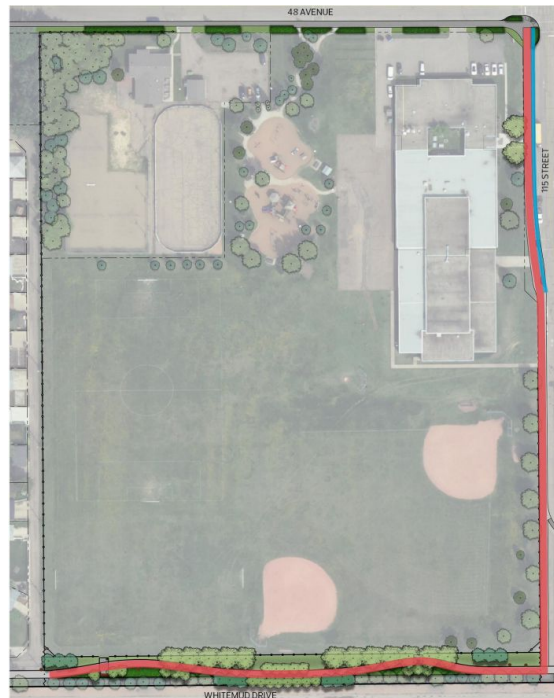
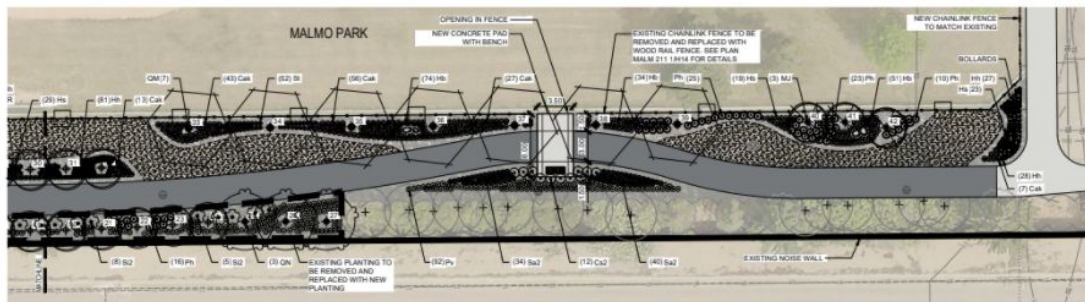


2 BGN TRAIL CONCEPT



1 MALMO PARK SW
FLR

SCALE 1:300



3 COMMUNITY INSIGHTS

- Alley should not be closed
- Pedestrian walkway
- Service access
- Crime will increase
- Too loud as a gathering spot
- Eliminate access
- Create hiding places





ADMINISTRATION'S RECOMMENDATION: **APPROVAL**

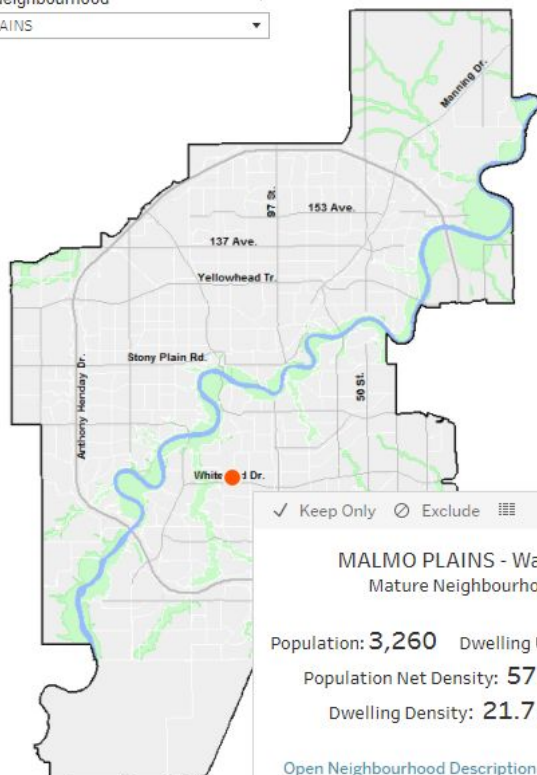
Neighbourhood Profile

Federal Census 2016 - Malmo Plains

(Ward 10)

Select a Neighbourhood

MALMO PLAINS



✓ Keep Only ○ Exclude

MALMO PLAINS - Ward 10
Mature Neighbourhood

Population: **3,260** Dwelling Units: **1,235**

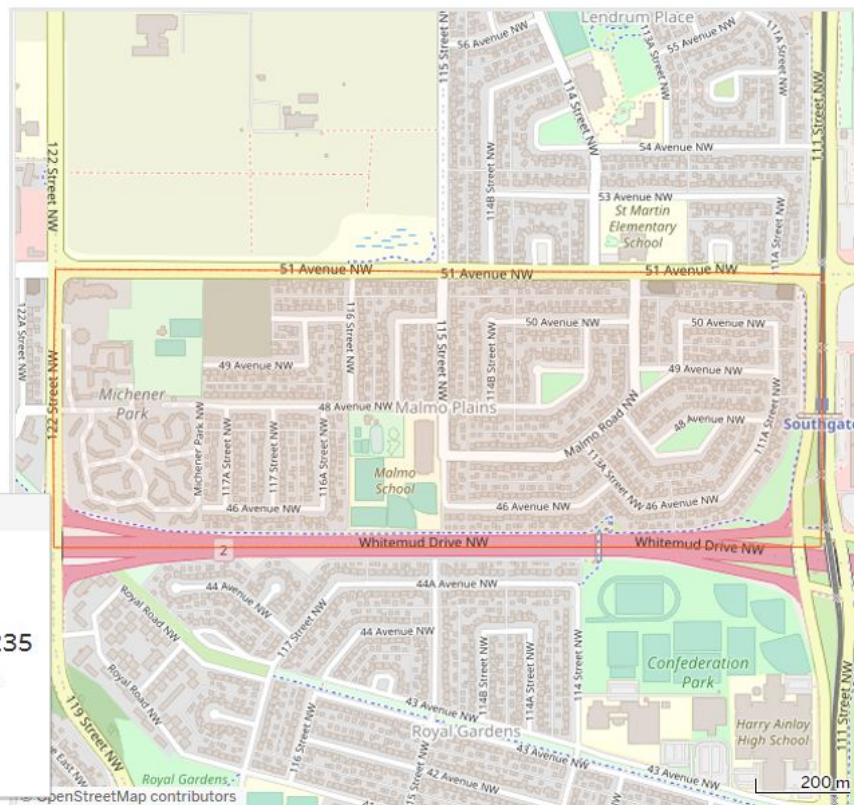
Population Net Density: **57.0 POP/ha**

Dwelling Density: **21.7 unit/ha**

[Open Neighbourhood Description](#)

Note:

- * Only residential neighbourhoods with a total population greater than 100 people are presented;
- * Demographic calculations for the City of Edmonton include neighbourhoods with a total population lower than 100 people;
- * Total population sums may not equal the sum of individual age groups due to rounding



* Click to reset map after Zoom or Pan