

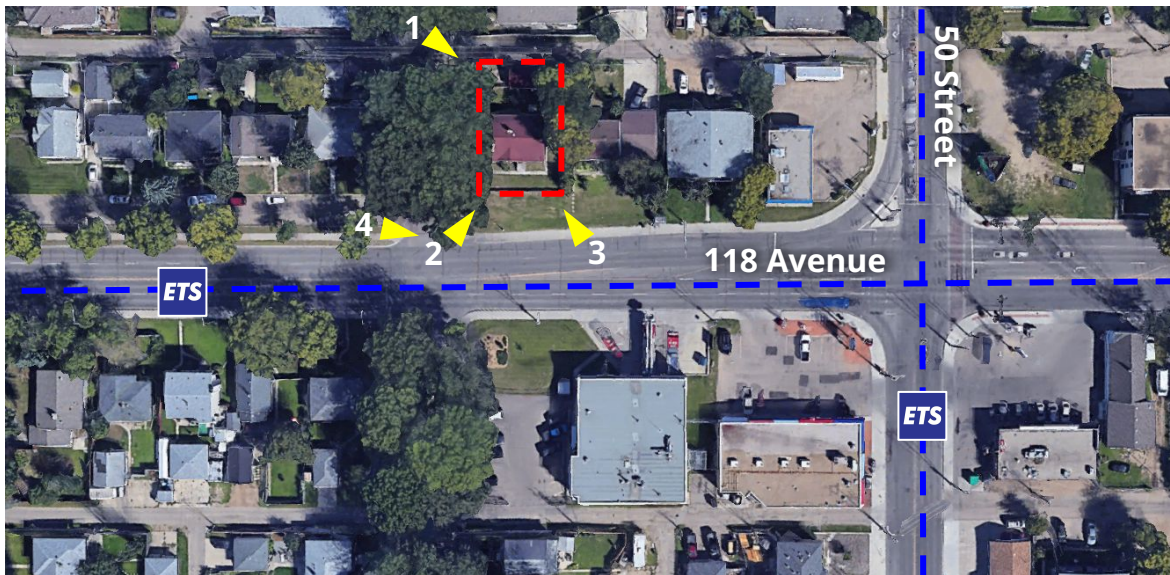


ITEM 3.9 CHARTER BYLAW 20041 NEWTON

DEVELOPMENT
SERVICES
APR 5, 2022



2 SITE VIEWS



3 COMMUNITY INSIGHTS

ADVANCE NOTICE
60 m



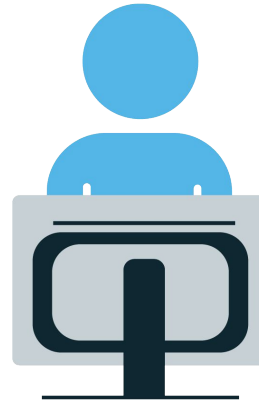
1 RESPONSE

REZONING
INFORMATION
SIGN



POSTED:
JANUARY 20,
2022

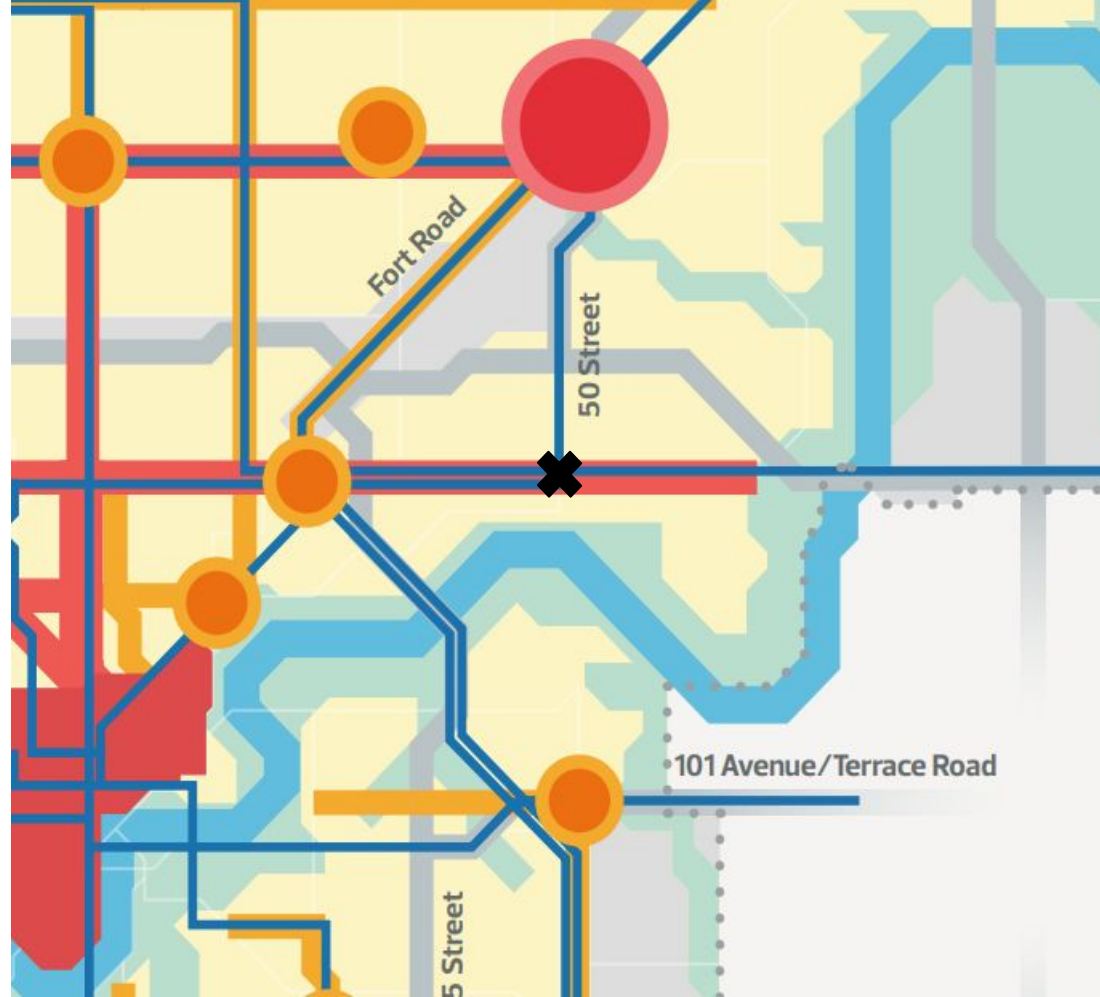
CITY
WEBPAGE



LIVE:
JANUARY 24,
2022

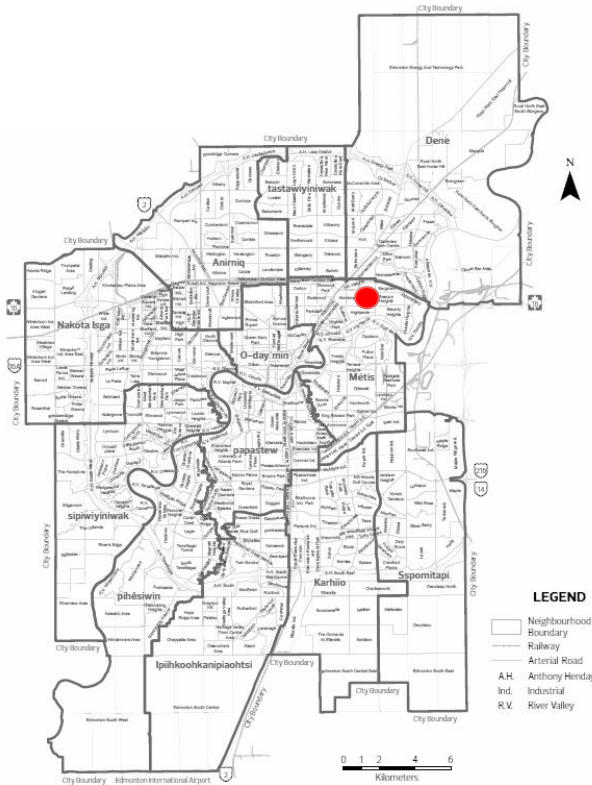
Concerns:

- increased crime
- traffic impacts
- parking
- property values
- commercial waste
- noise





ADMINISTRATION'S RECOMMENDATION: **APPROVAL**



NEWTON

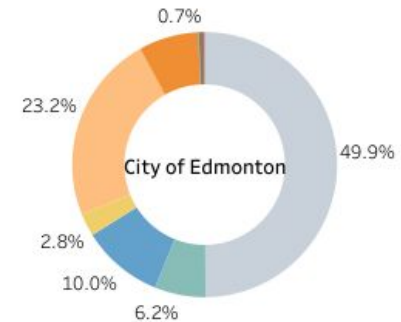
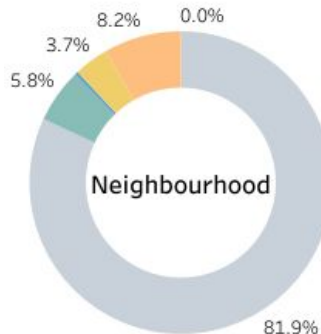
Population **2,950**

Population Net Density **45.0 population/ha**

Dwelling Units **1,220**

Dwellings Density: **18.9 units/ha**

Private Dwellings by Structure Type



- Single-detached house
- Semi-detached house
- Row house
- Apartment or flat in a duplex
- Apartment (4 storeys and under)
- Apartment (5 storeys and up)
- Other single-attached house
- Movable dwelling