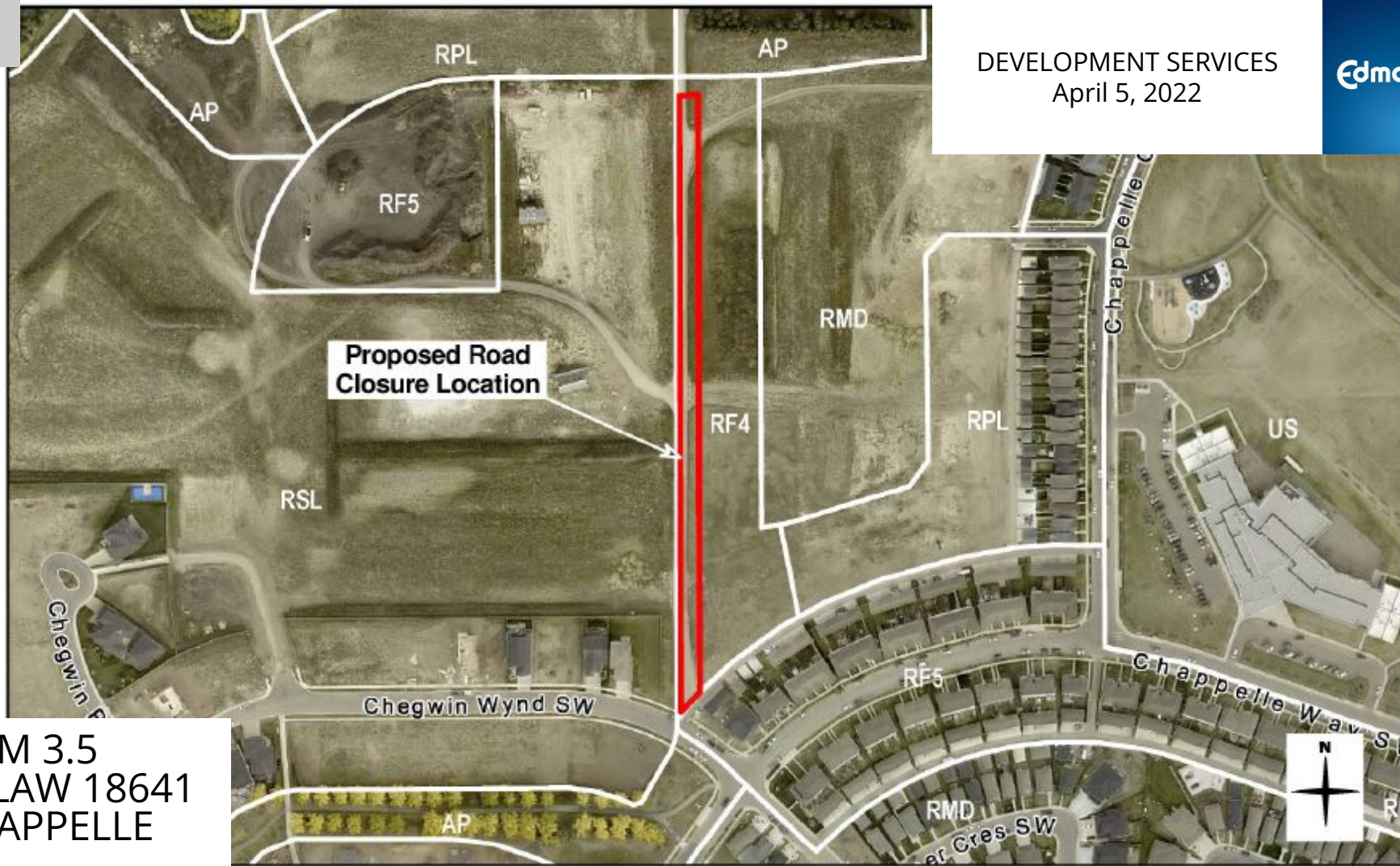


- |   |                             |  |                               |  |   |
|---|-----------------------------|--|-------------------------------|--|---|
|    | Low Density Residential     |    | School/Park                   |   | Greenways / Multi-Use Trail             |
|    | Street Oriented Residential |     | Public Elementary Junior High |   | 11.5m Enhanced Local Roadway Connection |
|    | Town House                  |    | Urban Village Park            |   | Top of Bank Walkway                     |
|    | Low Rise Apartments         |    | Environmental Reserve         |   | Top of Bank Roadway                     |
|    | High Density Residential    |    | Constructed Wetland           |  | Pipeline R/W                            |
|  | Residents Association       |  | Stormwater Management         |  |   |
|  | Commercial                  |  | Institutional Use             |  |   |



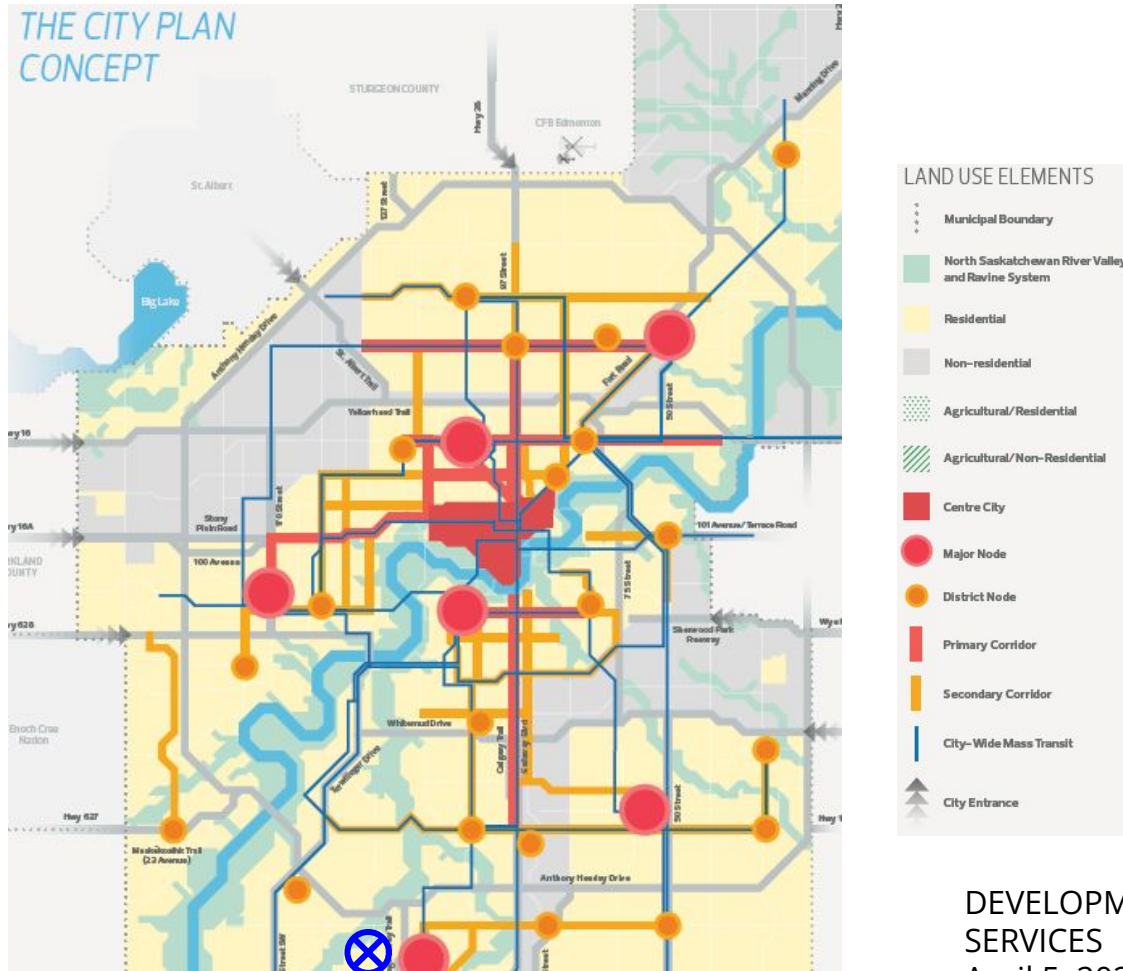
**Proposed Road  
Closure Location**

ITEM 3.4  
BYLAW 18630  
Chappelle



ITEM 3.5  
BYLAW 18641  
CHAPPELLE





ITEM 3.4  
BYLAW 18641  
CHAPPELLE

DEVELOPMENT  
SERVICES  
April 5, 2022