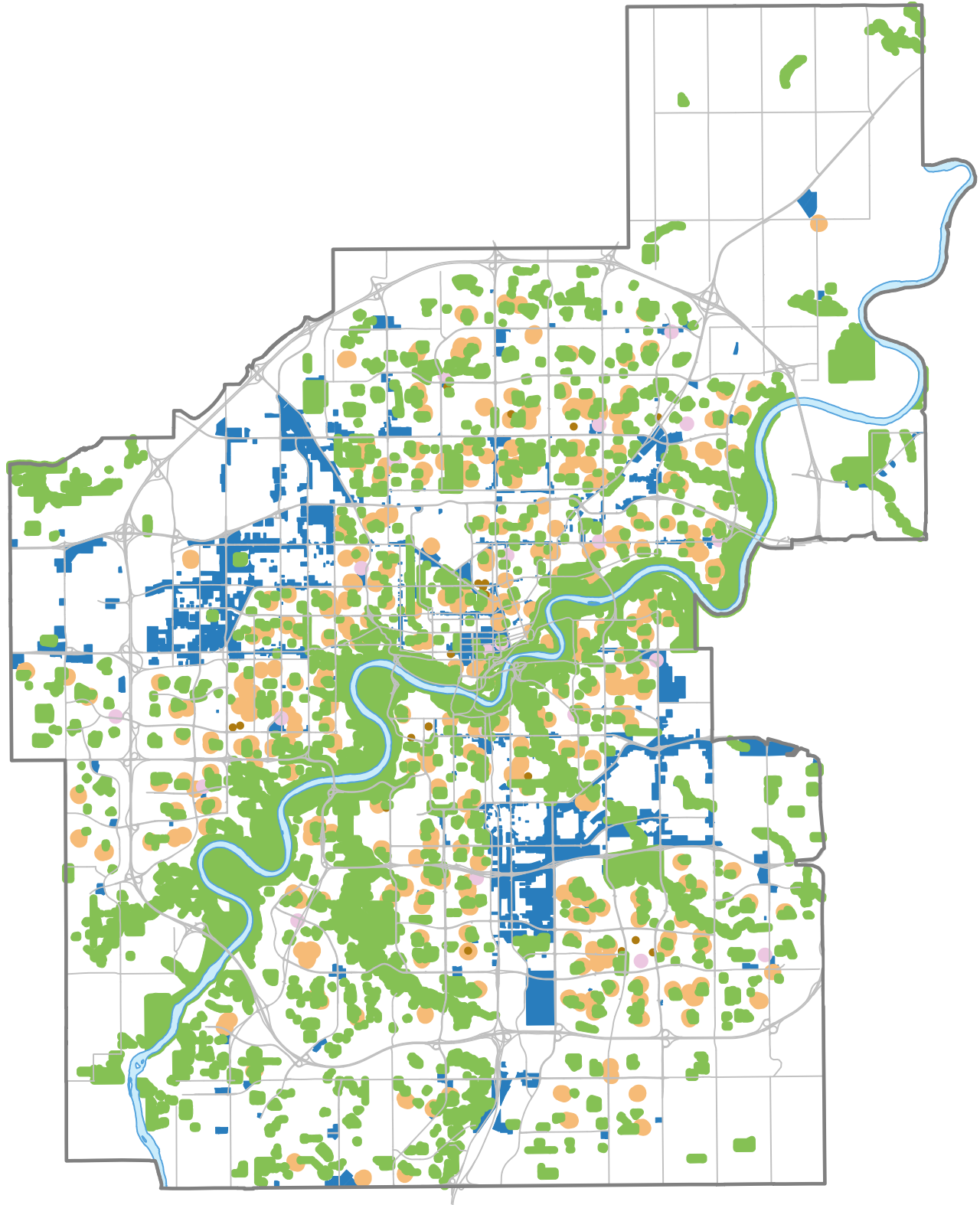


# Separation of Cannabis Stores from Sensitive Uses



**Map Compiled by:**  
Zoning Bylaw,  
Development Services

March 2018

The City of Edmonton disclaims  
any liability for the use of this  
map.

**LEGEND**

- 200m Buffer around Schools
- 100m Buffer around AHS
- 200m Buffer around Public Libraries
- 100m Buffer around Parks
- Potential Areas for Cannabis Stores  
(Based on current zoning)



No reproduction of this map, in whole or in part, is permitted without express written consent of the City of Edmonton, Urban Form and Corporate Strategic Development Department