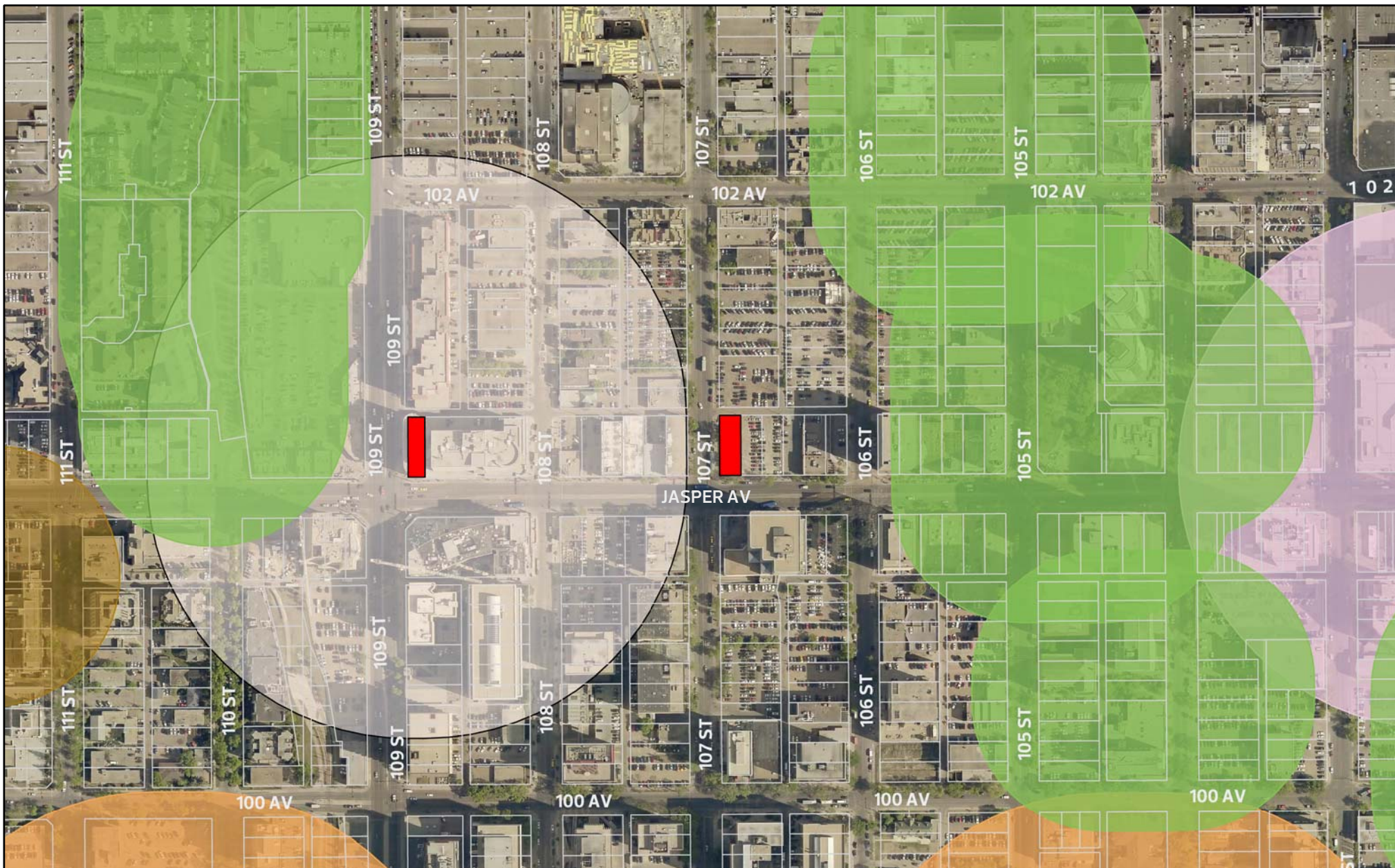


Example Separation between Cannabis Stores: Downtown



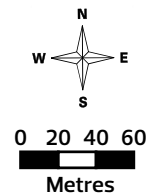
Map Compiled by:
Zoning Bylaw,
Development Services

March 2018

The City of Edmonton disclaims any liability for the use of this map.

LEGEND

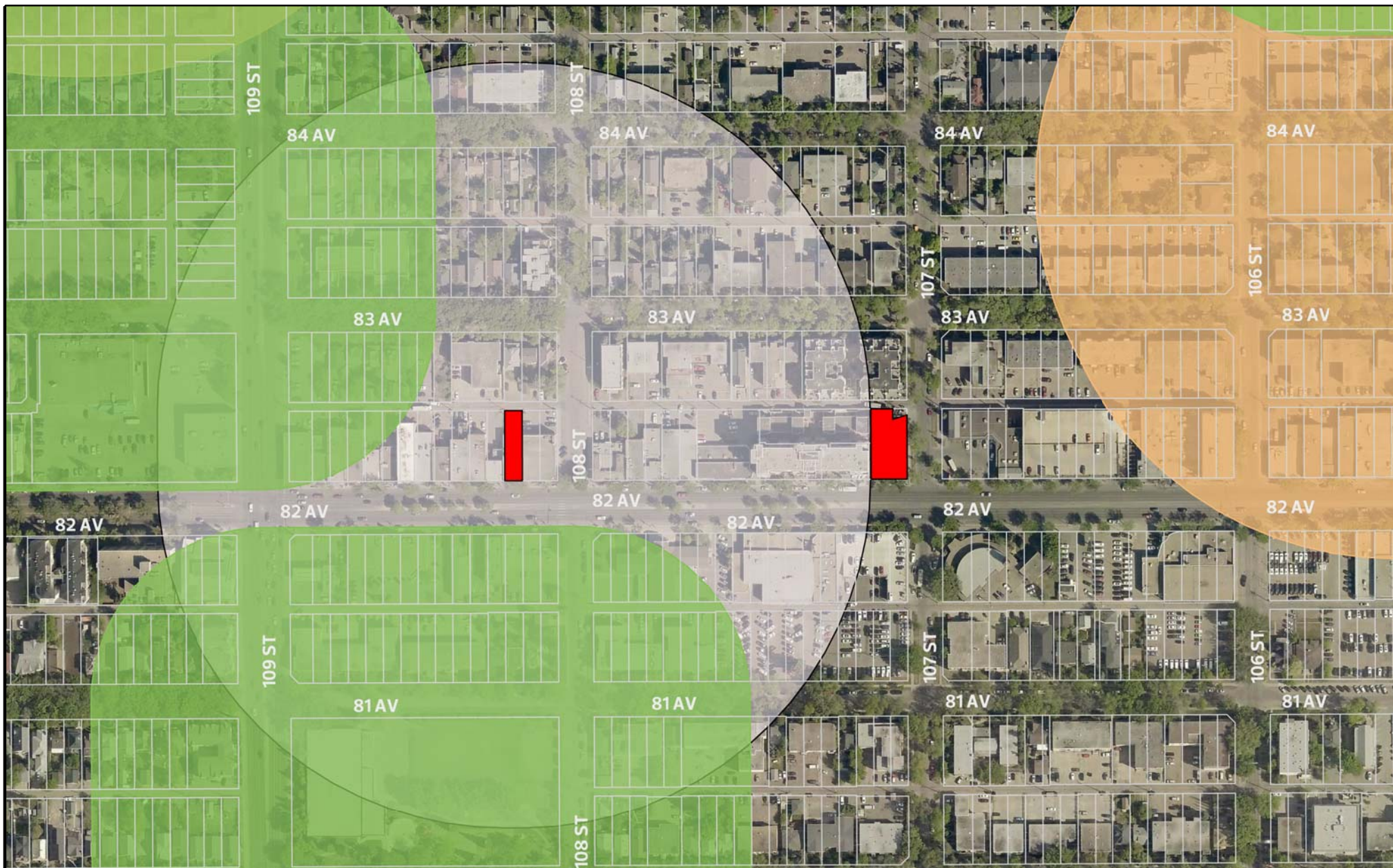
- Potential Cannabis Store Locations
- 200m Buffer around Sample Site
- 200m Buffer around Schools
- 200m Buffer around Public Libraries
- 100m Buffer around AHS
- 100m Buffer around Parks



CR_5516

No reproduction of this map, in whole or in part, is permitted without express written consent of the City of Edmonton, Urban Form and Corporate Strategic Development Department

Example Separation between Cannabis Stores: Strathcona



Map Compiled by:
Zoning Bylaw,
Development Services

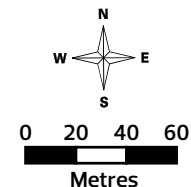
March 2018

The City of Edmonton disclaims any liability for the use of this map.

LEGEND

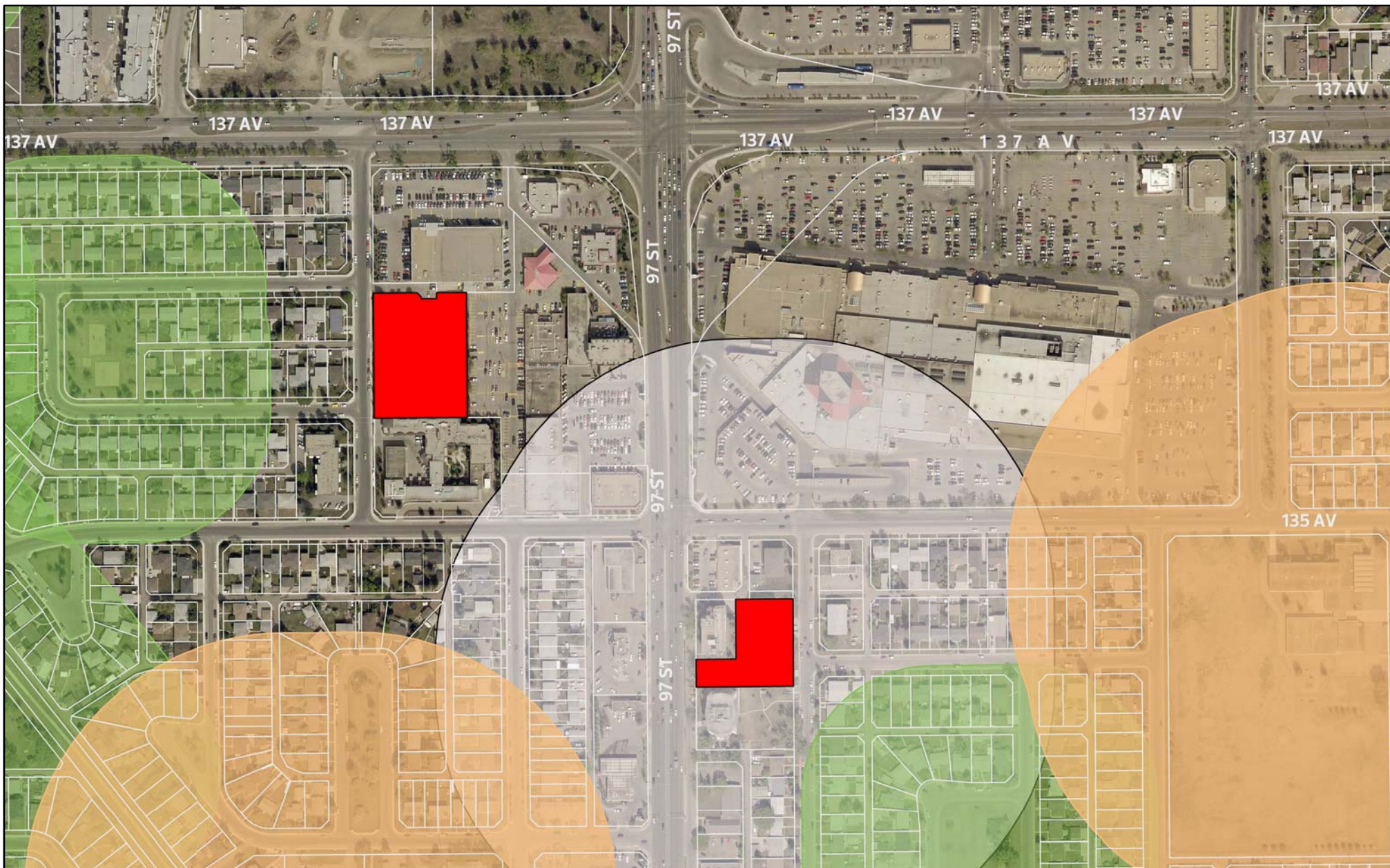
- Potential Cannabis Store Locations
- 200m Buffer around Sample Site
- 200m Buffer around Schools
- 100m Buffer around Parks

CR_5516



No reproduction of this map, in whole or in part, is permitted without express written consent of the City of Edmonton, Urban Form and Corporate Strategic Development Department

Example Separation between Cannabis Stores: Suburban



Map Compiled by:
 Zoning Bylaw,
 Development Services

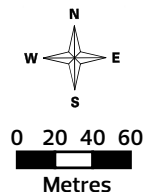
March 2018

The City of Edmonton disclaims any liability for the use of this map.

LEGEND

- Potential Cannabis Store Locations
- 200m Buffer around Sample Site
- 200m Buffer around Schools
- 100m Buffer around Parks

CR_5516



No reproduction of this map, in whole or in part, is permitted without express written consent of the City of Edmonton, Urban Form and Corporate Strategic Development Department