

The logo for the city of Edmonton, featuring the word "Edmonton" in a white, sans-serif font on a dark blue rectangular background.

# Cannabis Legalization Update

April 3, 2018

# Agenda

1. Overview of Federal and Provincial Regulations
2. City of Edmonton Proposed Principles
3. Impact on Bylaws
4. Next Steps
5. Perspectives from Anne McLellan and Rob Patridge

# Federal Regulations

Possession	<ul style="list-style-type: none"><li>● Limited to 18 years of age and older (maximum 30 grams)</li><li>● Maximum four plants allowed per household</li></ul>
Packaging and Labelling	<ul style="list-style-type: none"><li>● Prohibited in a manner that is appealing to youth</li></ul>
Licensing	<ul style="list-style-type: none"><li>● Cultivation: authorize the cultivation of any variety of cannabis and to produce cannabis (seed, fresh or dried)</li><li>● Processing: would authorize the production and packaging and labelling of a range of cannabis products destined for sale</li></ul>

# Government of Alberta Priorities

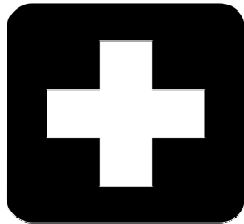
- Protect Health of Citizens
- Eliminate Illegal Market
- Restricting Youth Access
- Impaired Driving/Workplace



# Provincial Regulations

Zoning	<ul style="list-style-type: none"><li>● 100m separation distances from schools and provincially funded hospitals <b>(Municipality can vary)</b></li></ul>
Licensing	<ul style="list-style-type: none"><li>● Opening hours from 10:00 am to 2:00 am <b>(Municipality can vary)</b></li><li>● Maximum of 15% of the licenses for retail sales will be granted to any one owner.</li></ul>
Consumption	<ul style="list-style-type: none"><li>● Consumption will not be allowed in vehicles or cannabis retail outlets</li><li>● Consumption in public will mirror the tobacco regulations <b>(Municipality can vary)</b></li></ul>
Other	<ul style="list-style-type: none"><li>● AGLC sole distributor and sole provider of online cannabis sales</li><li>● Maximum four plants allowed per household grown from seed</li></ul>

# City of Edmonton Principles



**Public  
Health and  
Safety**

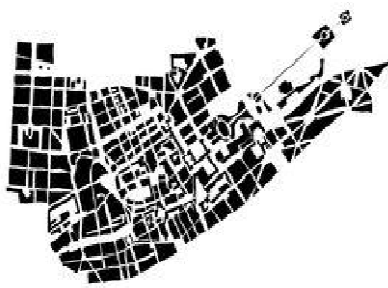


**Business Friendly**

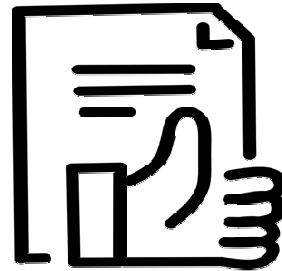


**Balanced Approach  
to Community  
Livability**

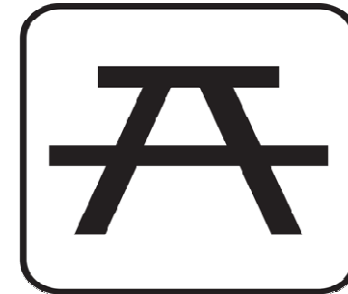
# Bylaw Changes



**Zoning  
Bylaw  
12800**



**Business  
Licence Bylaw  
13138**



**Public Places  
Bylaw  
14614**

# Zoning Engagement Feedback

## ENGAGEMENT FEEDBACK

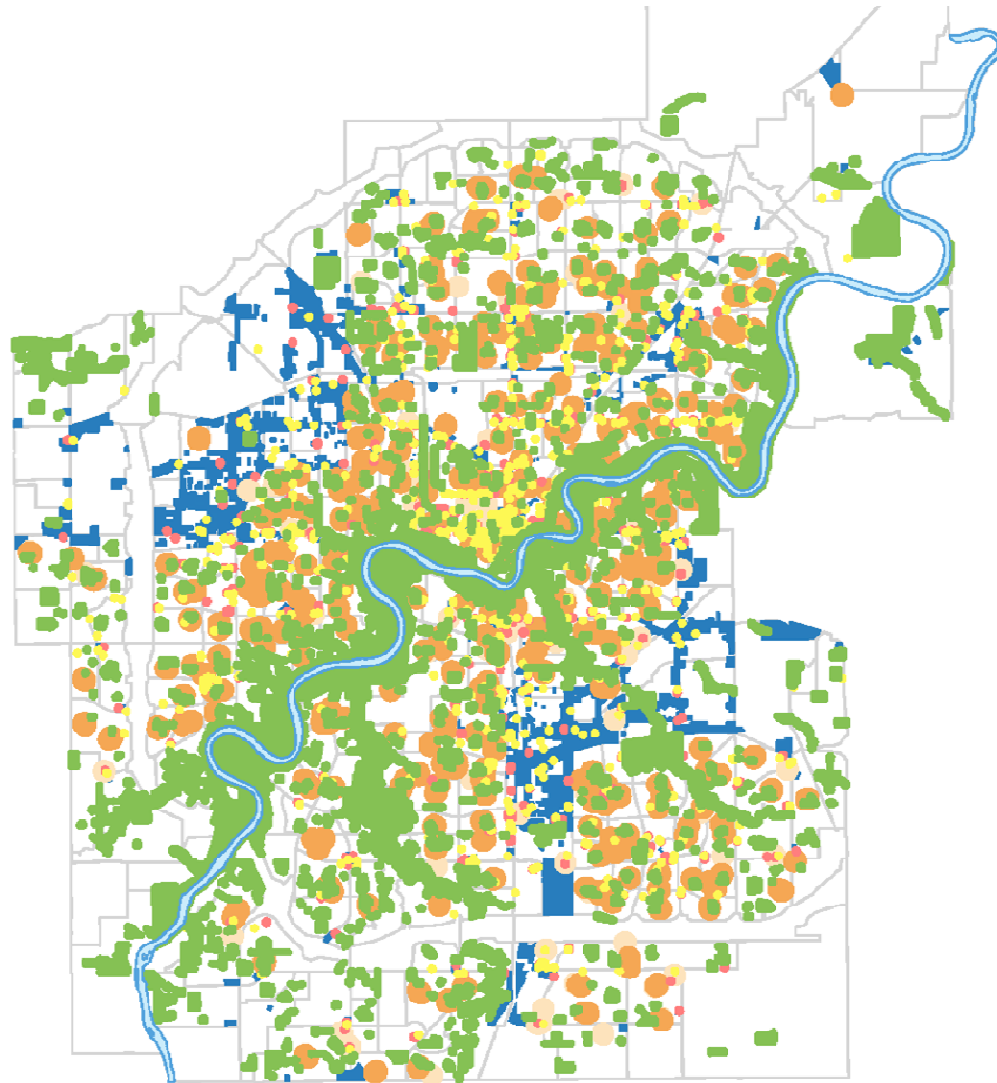
<b>Zones</b>	<ul style="list-style-type: none"><li>● allow cannabis stores in main streets, major roadways and shopping centres</li><li>● add cannabis stores to Industrial Business (IB) zone</li><li>● add cannabis stores to direct control and special area zones</li><li>● cannabis stores a permitted use in mixed use zones</li></ul>
<b>Separation Distances</b>	<ul style="list-style-type: none"><li>● most important to separate cannabis stores from schools</li><li>● mixed feedback on need for separation distance between cannabis stores</li><li>● remove separation between alcohol and cannabis stores</li><li>● other separation distances generally accepted</li></ul>

# Approaches in Other Jurisdictions

CITY	SEPARATION B/W STORES	SEPARATION FROM OTHER USES
Calgary	300 m	150 m from schools and emergency shelters, 10 m from child care services, cannot locate beside a liquor store
Seattle	150 m	300 m from schools, playgrounds, rec centers, child care facilities, parks, transit centers, libraries, game arcades
Portland	300 m	300 m from schools
Denver	300 m	300 m from schools, child care facilities
Los Angeles	215 m	215 m from schools, parks, libraries, drug treatment facilities, child care facilities and permanent supportive housing



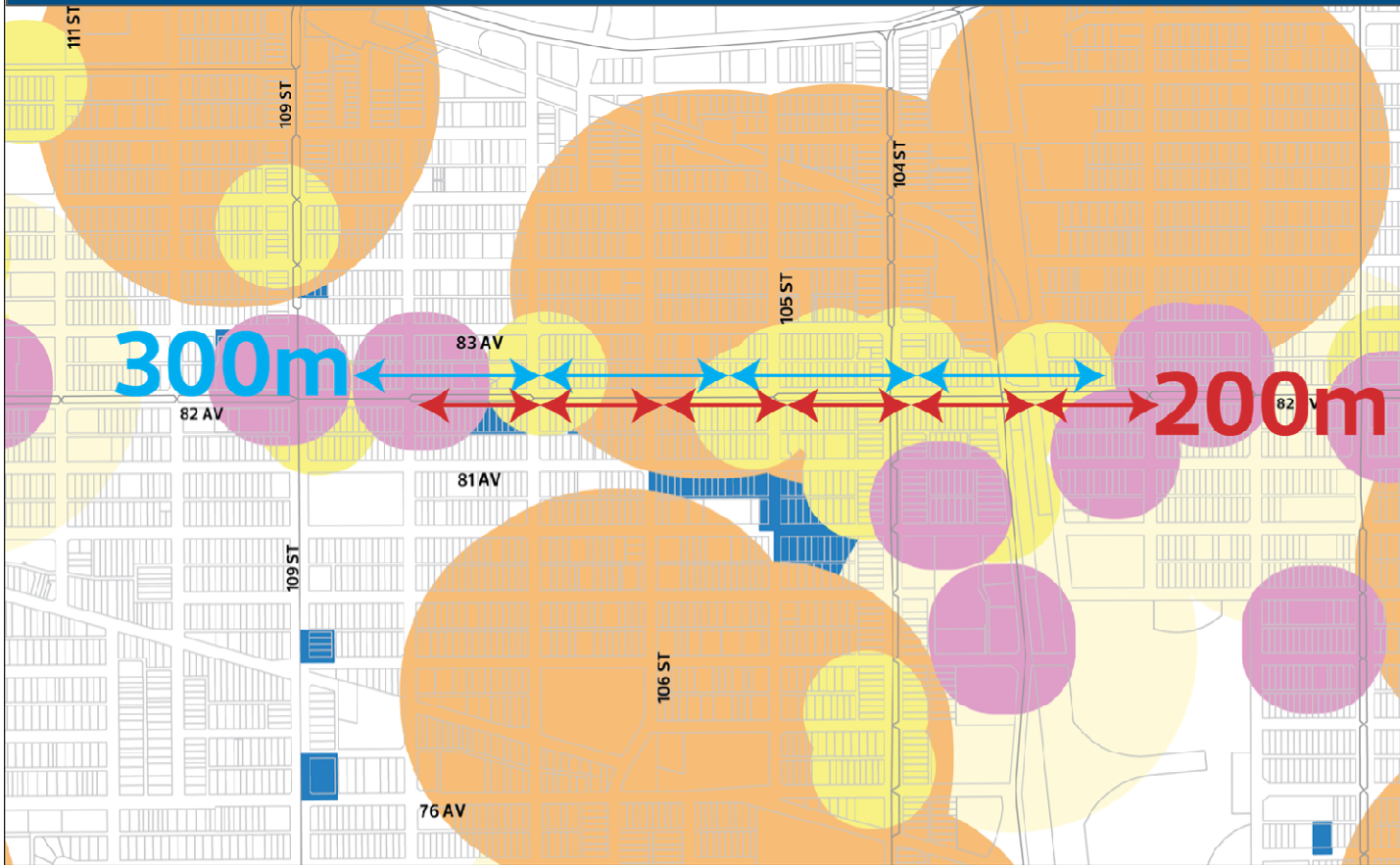
# Additional Separation Distances



## LEGEND

- 300 m buffer around schools
- 300 m buffer around child care
- 100 m buffer around tobacco sales
- 100 m buffer around alcohol sales
- Potential areas for stores

# Additional Separations in Strathcona



## LEGEND

- 300m Buffer around Schools
- 300m Buffer around Child Care Services
- 100m Buffer around Tobacco Sales
- 100m Buffer around Alcohol Sales
- Potential Areas for Cannabis Stores

# Zoning Bylaw Changes

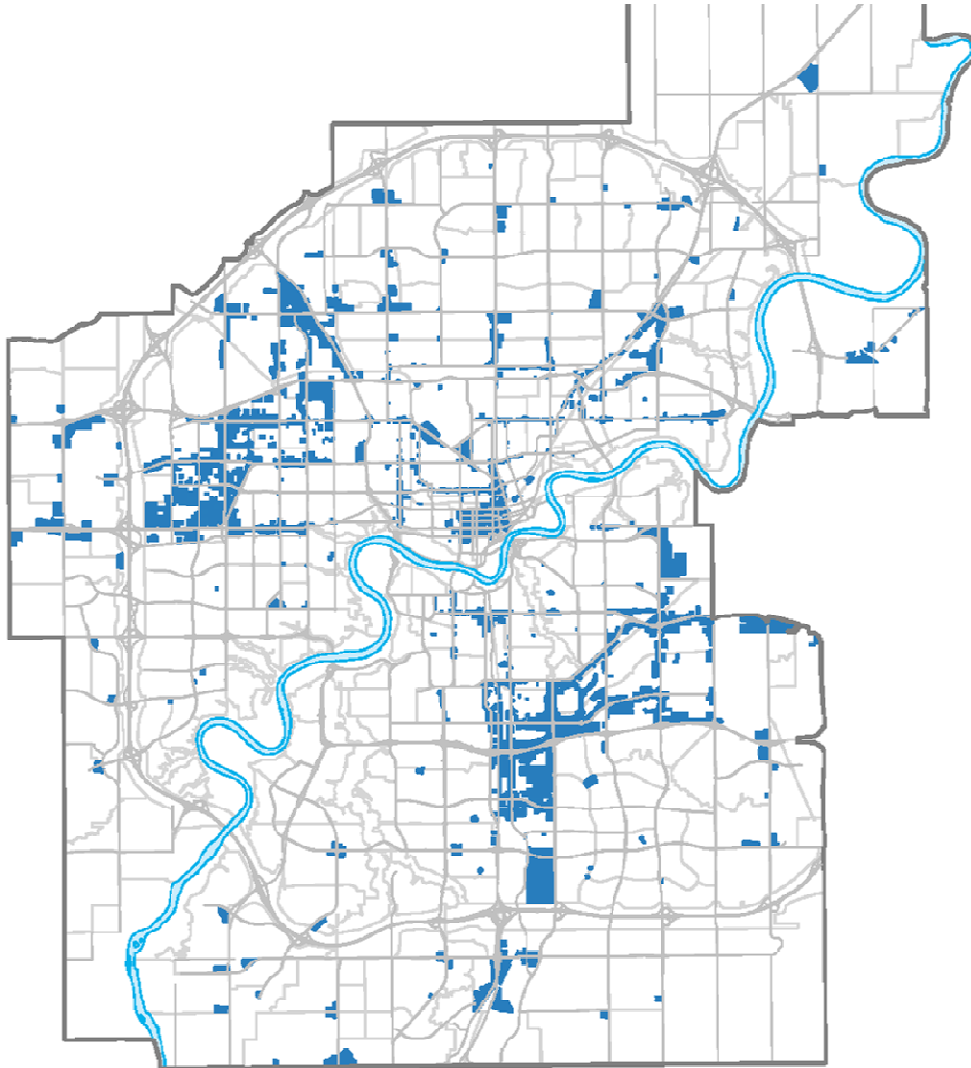
## PROPOSED ZONES TO INCLUDE CANNABIS RETAIL SALES

<b>Permitted</b>	9 commercial	CSC, CB1, CB2, CHY, CO, CCA, JAMSC, UW, AED
	3 mixed use	CB3, CMU, HA
	1 industrial business	IB


## PROPOSED SEPARATION DISTANCES

<b>200 m</b>	Between cannabis stores
<b>200 m</b>	Schools and public libraries
<b>100 m</b>	Public parks, public recreation facilities and provincial health care facilities

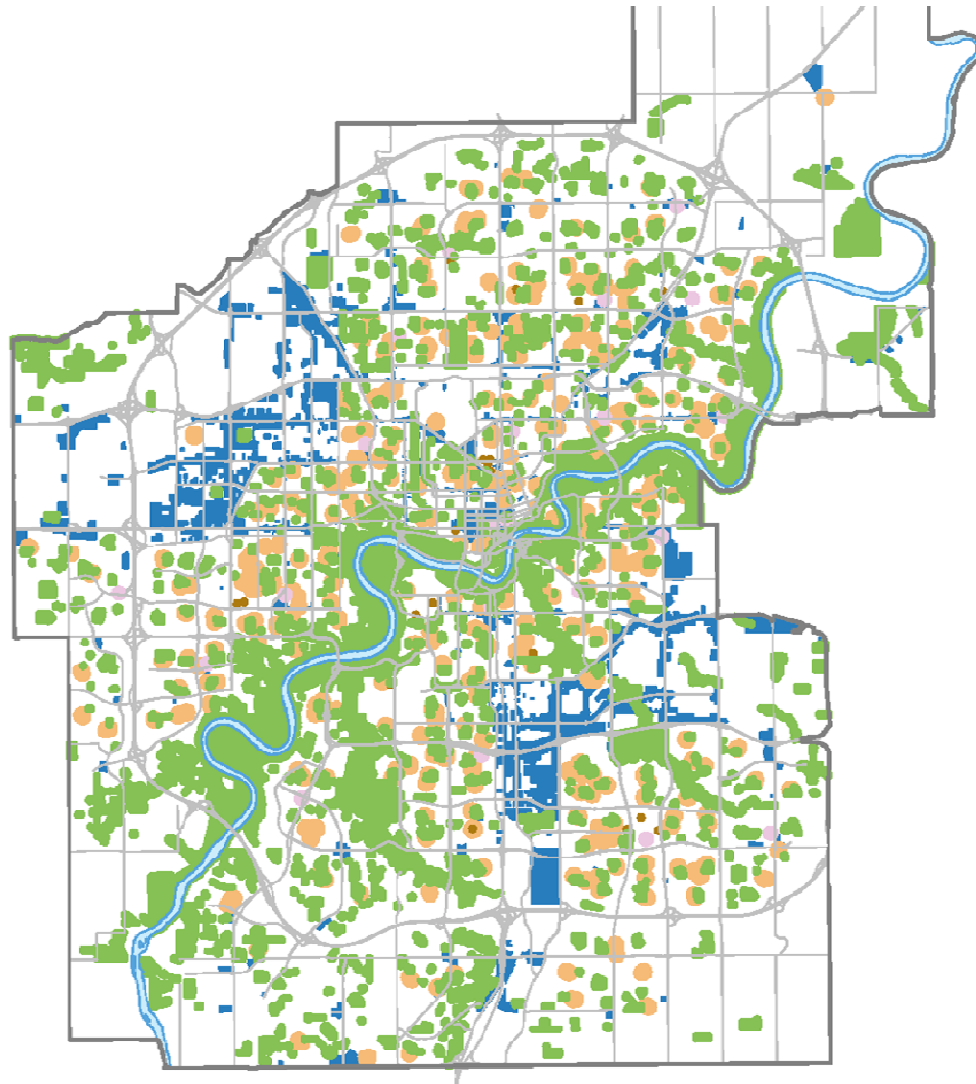
# CoE Proposed Zoning Locations



## LEGEND

-  Potential areas available for cannabis stores (based on current zoning)

# Separation from Sensitive Uses

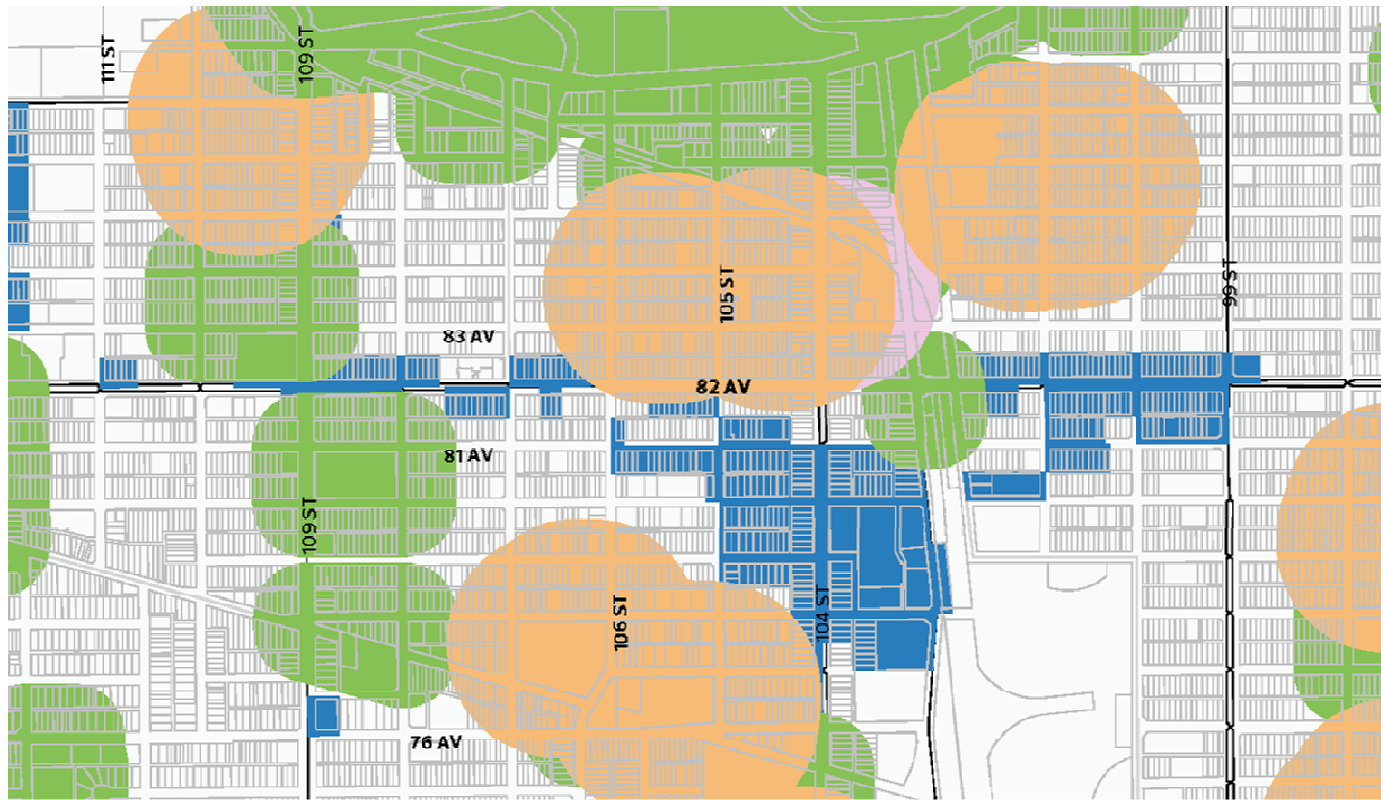


## LEGEND

- 200 m buffer around schools
- 100 m buffer around AHS
- 200 m buffer around libraries
- 100 m buffer around parks
- Potential areas for cannabis stores



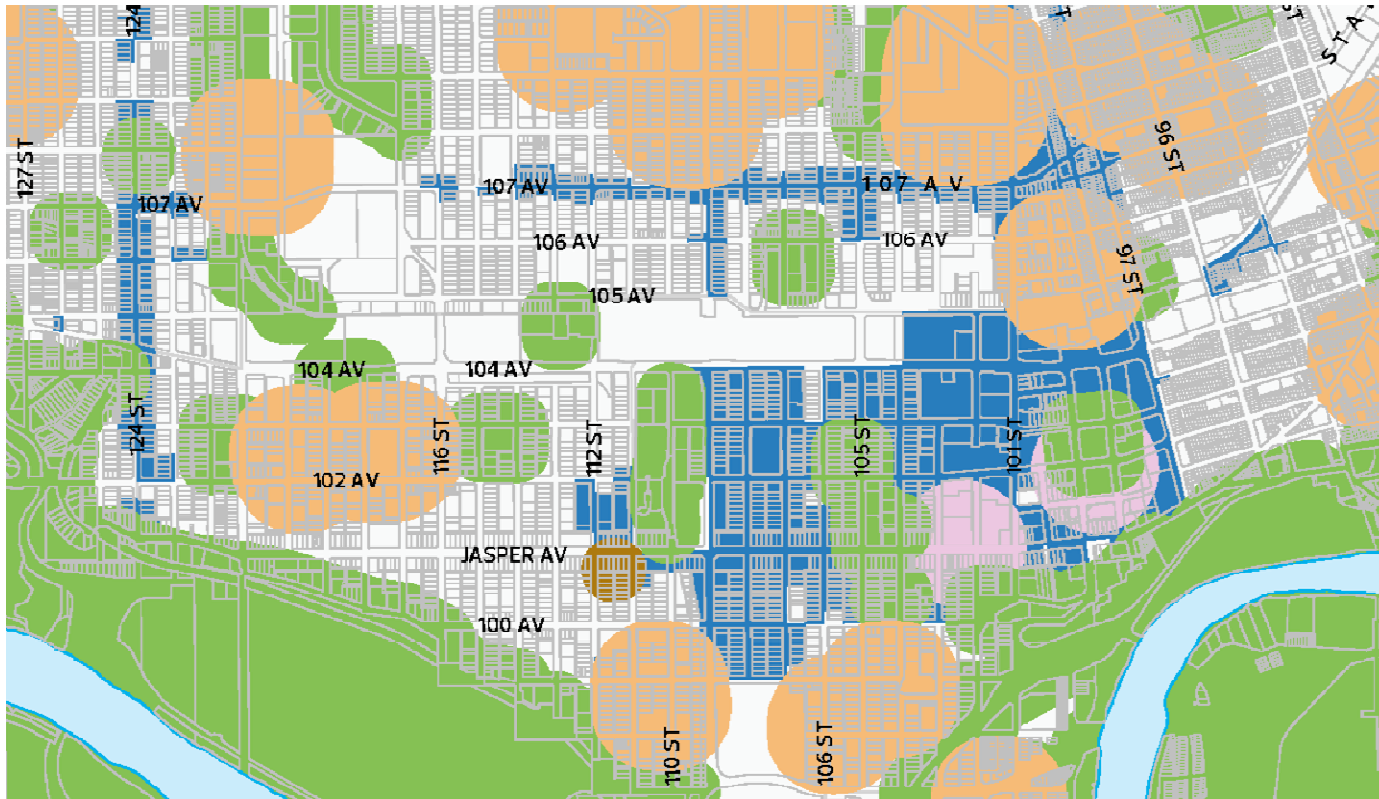
# Example Separation in Strathcona



## LEGEND

- 200 m buffer around schools
- 100 m buffer around AHS
- 200 m buffer around libraries
- 100 m buffer around parks
- Potential areas for stores

# Example Separation Downtown/Oliver/North Edge/124 St



## LEGEND

- 200 m buffer around schools
- 100 m buffer around AHS
- 200 m buffer around libraries
- 100 m buffer around parks
- Potential areas for stores

# Business Licence Bylaw Proposed Changes

PROPOSED CATEGORIES*	DETAILS	FEE
<b>Cannabis Retail Store</b>	Sale of cannabis products Hours: 10:00 AM to 11:00 PM ID check under 40 Consultation with AGLC	\$ TBC
<b>Cannabis Cultivation Facility</b>	Small or large scale growers Federal licence required	\$TBC
<b>Cannabis Processing Facility</b>	Small or large scale manufacturing Federal licence required	\$TBC
<b>* All Licences subject to Fire Inspection + Fee</b>		

# Public Places Bylaw Engagement Summary

<b>November/ December 2017</b>	Insight and Web Survey - Legalization 4,100 Responses (+1900 Insight and +2200 Web) Four Stakeholder workshops Five Public Engagement Sessions
<b>February 2018</b>	Insight Survey- Public Consumption (+2,000 responses)

# Public Places Bylaw Engagement Highlights

November and December 2017 Survey results identified the top five concerns/interests as:

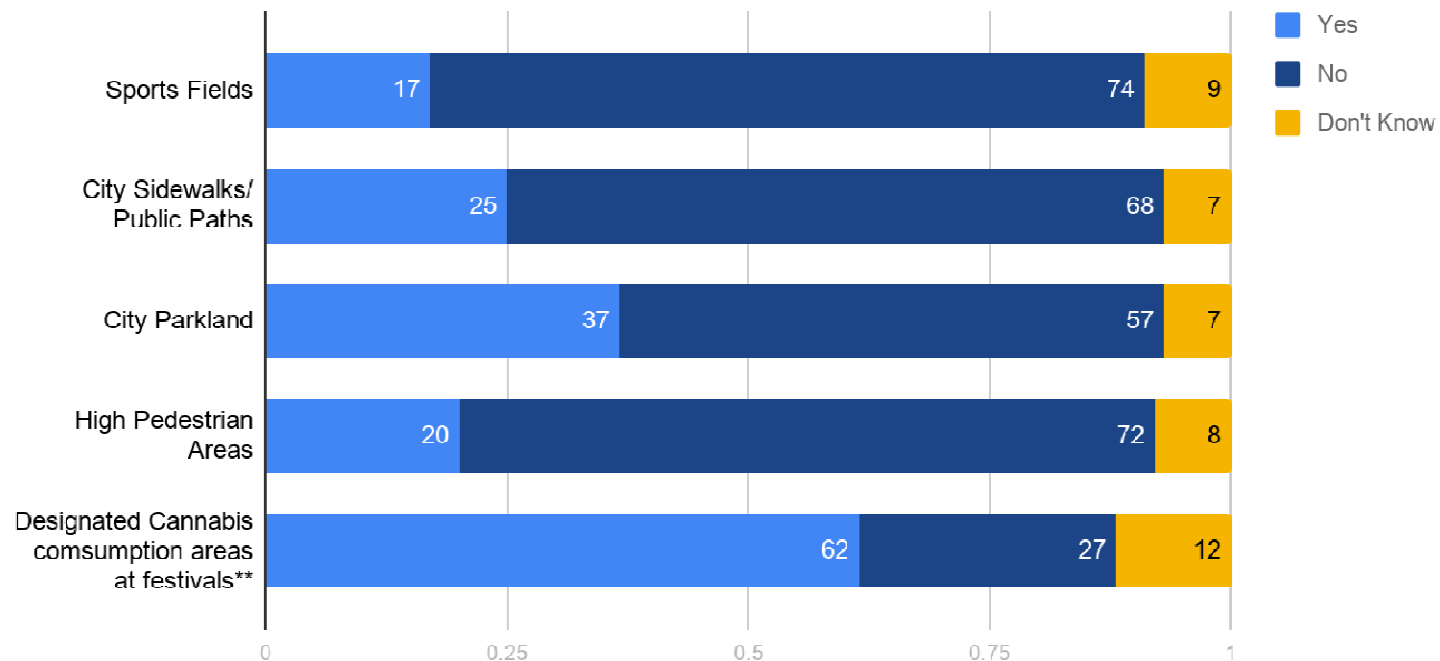
1. Impaired driving
2. Public Smoking and Vaping
- 3, 4 & 5. Education, Workplace Safety, Odours from smoking in public\*

\*Order varies between Insight and Web but all three are consistent).



# Public Consumption Engagement Highlights

Do you think cannabis consumption should be allowed on/in...



\*\*Similar to smoking areas and beer gardens

# Public Places Bylaw Options

OPTIONS	WHERE CONSUMPTION IS PERMITTED
<b>A. Prohibit public consumption</b>	<ul style="list-style-type: none"><li>● Private property only</li></ul>
<b>B. Mirror existing public consumption rules for tobacco</b>	<ul style="list-style-type: none"><li>● Public consumption except in areas prohibited by Provincial regulations and in areas where smoking tobacco is currently prohibited (e.g. Churchill Square)</li></ul>
<b>C. Designated areas only</b>	<ul style="list-style-type: none"><li>● Private property, and</li><li>● Designated sites (e.g. specific area at festivals or parkland not used for recreation)</li></ul>

# Next steps



**Validate  
Principles**

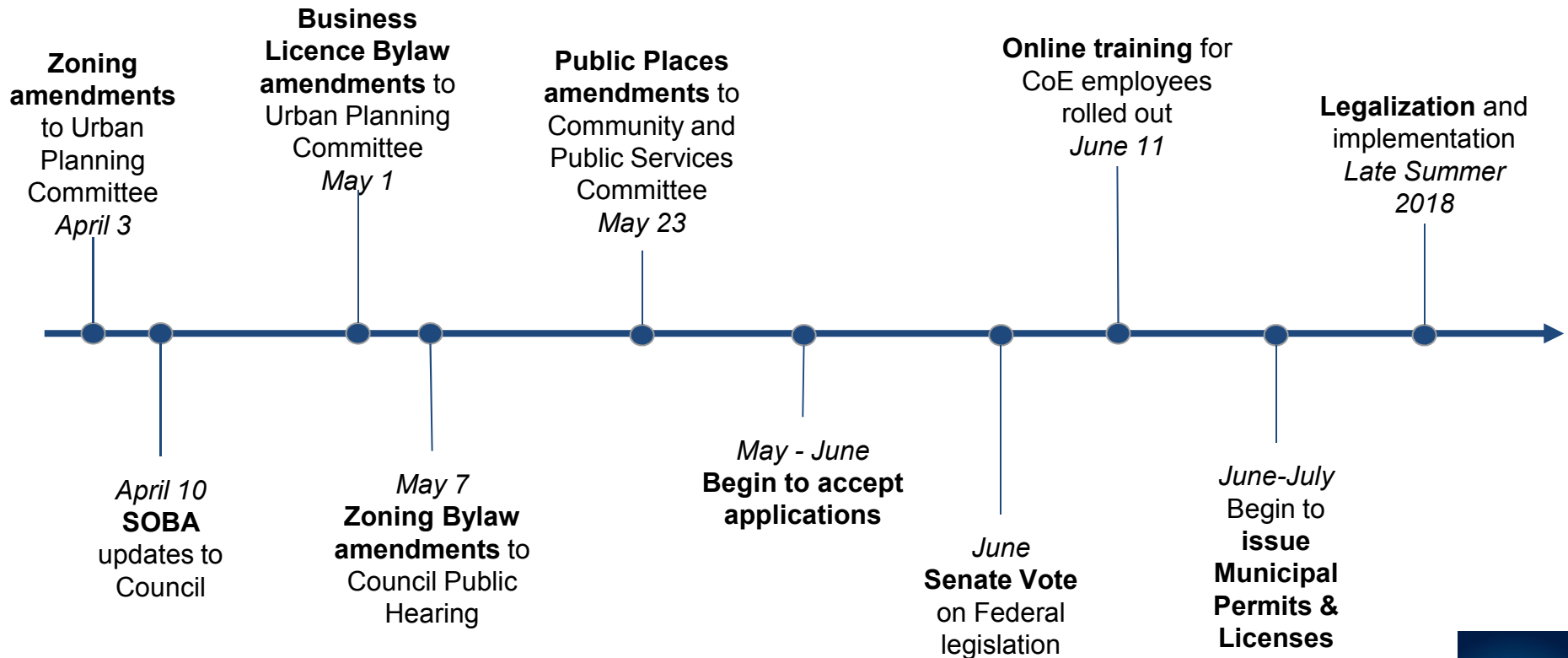


**SOBA - Approval**



**Bylaw  
Amendments**

# 2018 Key Milestones



# Perspectives

**Honorable Anne McLellan**

**Mr. Rob Patridge, Deloitte**



A grayscale photograph of a city street scene with several tall buildings and cars. A large blue semi-transparent overlay covers the middle portion of the image. The text 'Thank you!' and 'Questions?' is written in white on this overlay. In the top right corner, there is a dark blue square containing the word 'Edmonton' in white.

**Thank you!**

**Questions?**

**Edmonton**