



Community Services

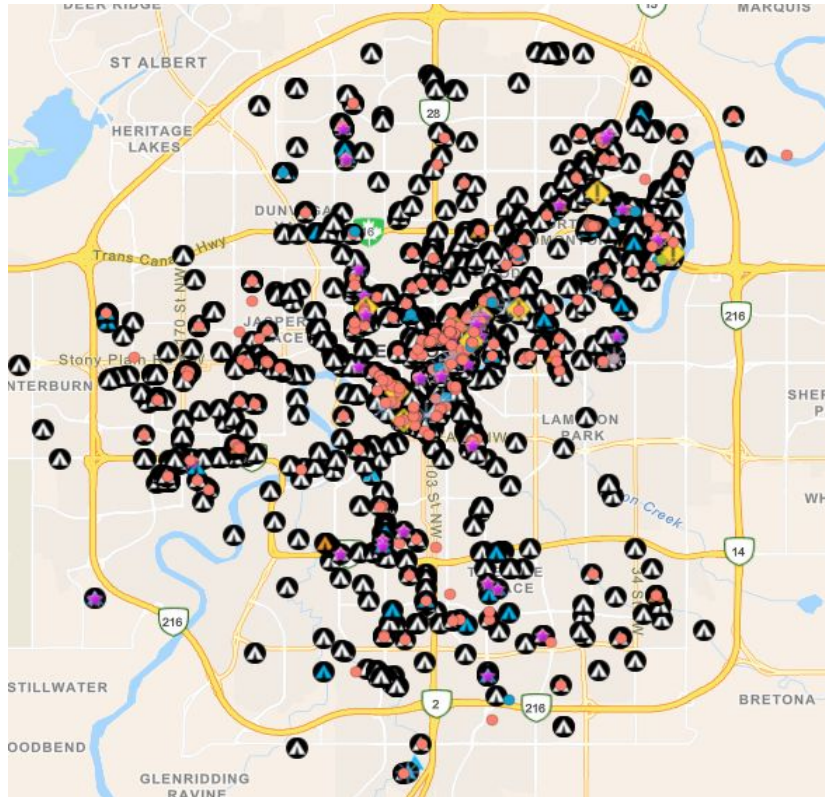
Edmonton

Homelessness and Encampment Response Strategy

City Council
May 9, 2022

Requisitioned from Community and Public Services Committee
April 25, 2022

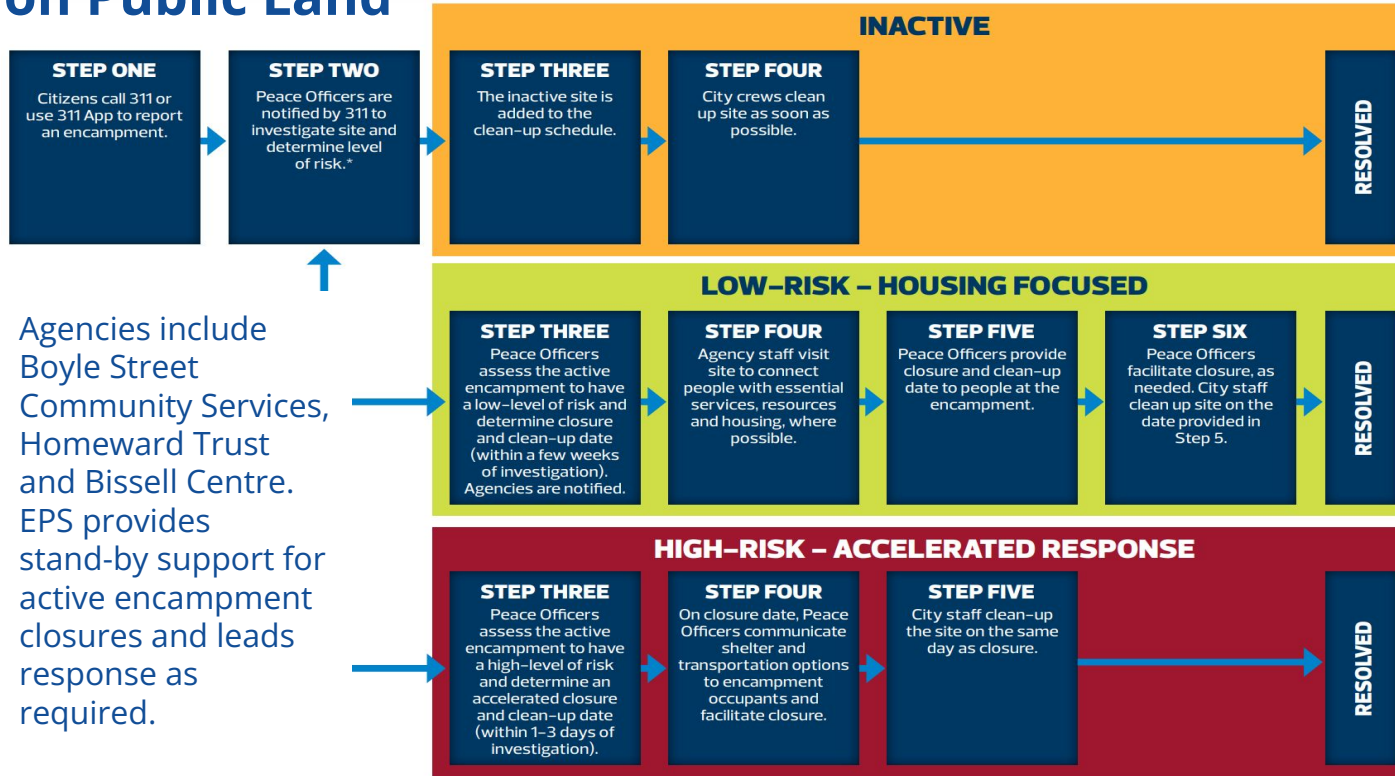
Encampment Response: Current State



Encampments Jan 2022 - May 2022

- Completed
- Not Started
- Received
- In Progress
- Reoccupied Camp
- Inaccessible due to snow/ice
- Low Priority
- High Priority
- Cleaned

How the City and its Partners Respond to Encampments on Public Land



Agencies include Boyle Street Community Services, Homeward Trust and Bissell Centre. EPS provides stand-by support for active encampment closures and leads response as required.

Current Inactive Encampment Response



Step 2	Step 3	Step 4	Total # of Days to Resolution
1-3 days or as resources allow	immediate	7 days	Up to 10 days

Current Low-Risk Encampment Response



Step 2	Step 3	Step 4	Step 5	Step 6	Total # of Days to Resolution
1-3 days or as resources allow	4-26 days			7 days	Up to 34 days

Current High-Risk Encampment Response



Step 2	Step 3	Step 4	Step 5	Total # of Days to Resolution
1-3 days or as resources allow	immediate	0-3 days		Up to 6 days

Encampment to Housing Process



Encampment Response - Service Level Options

	Current	Option 1	Option 2	Option 3
Resources	6-34 Day Response	7-14 Day Response	3-6 Day Response	1-2 Day Response
Park Rangers	4	6 [4]	8 [6]	12 [8]
Park Ranger Sergeants	1 [0]	1	1	2
EPS Officers	4	TBD	TBD	TBD
EPS Officer Sergeants	2	TBD	TBD	TBD
Outreach and Housing	18	9	N/A	N/A
Clean up Crews	14 [6]	14 [6]	32 [14]	98 [42]
Additional Cost	N/A	\$0.86M	\$2.3M	\$5.9M
Tax Increase	N/A	+ 0.05%	+0.13%	+0.34%

*Cost estimate includes staff, materials and equipment. [] indicates winter personnel numbers.

Thank you. Questions?

Edmonton