

# THE CITY OF EDMONTON CIVIC PRECINCT SURFACE & FOUNTAIN RENEWAL

KEY STAKEHOLDER PRESENTATION

November 14<sup>TH</sup>, 2017

---

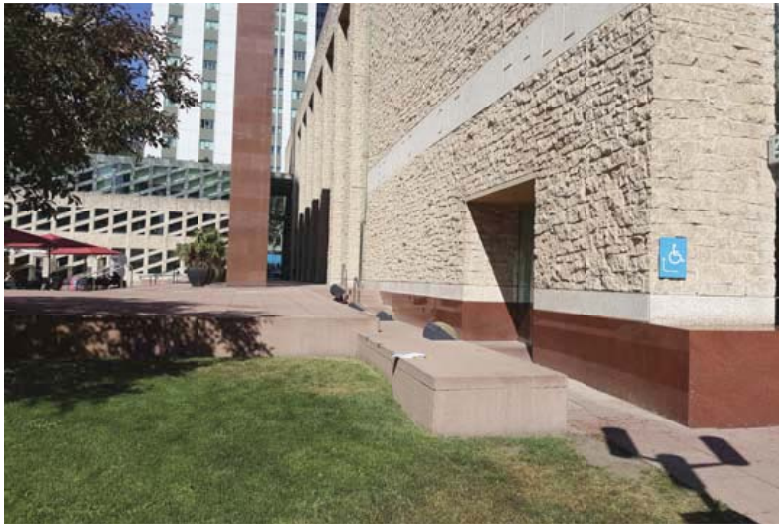
Sir Winston  
Churchill  
Square

**gec**  
architecture

Janet  
Rosenberg  
& Studio

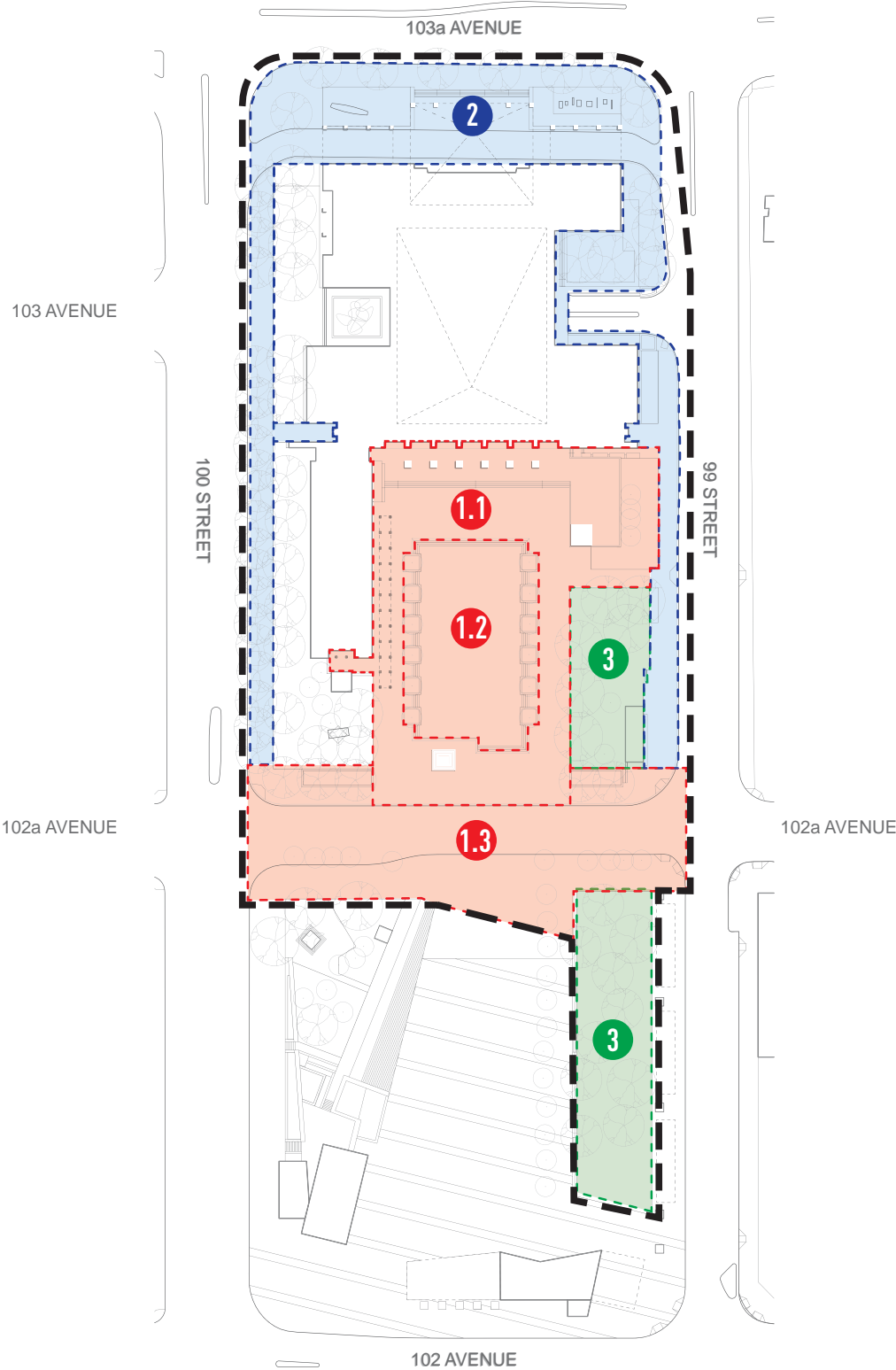


CONTEXT PLAN





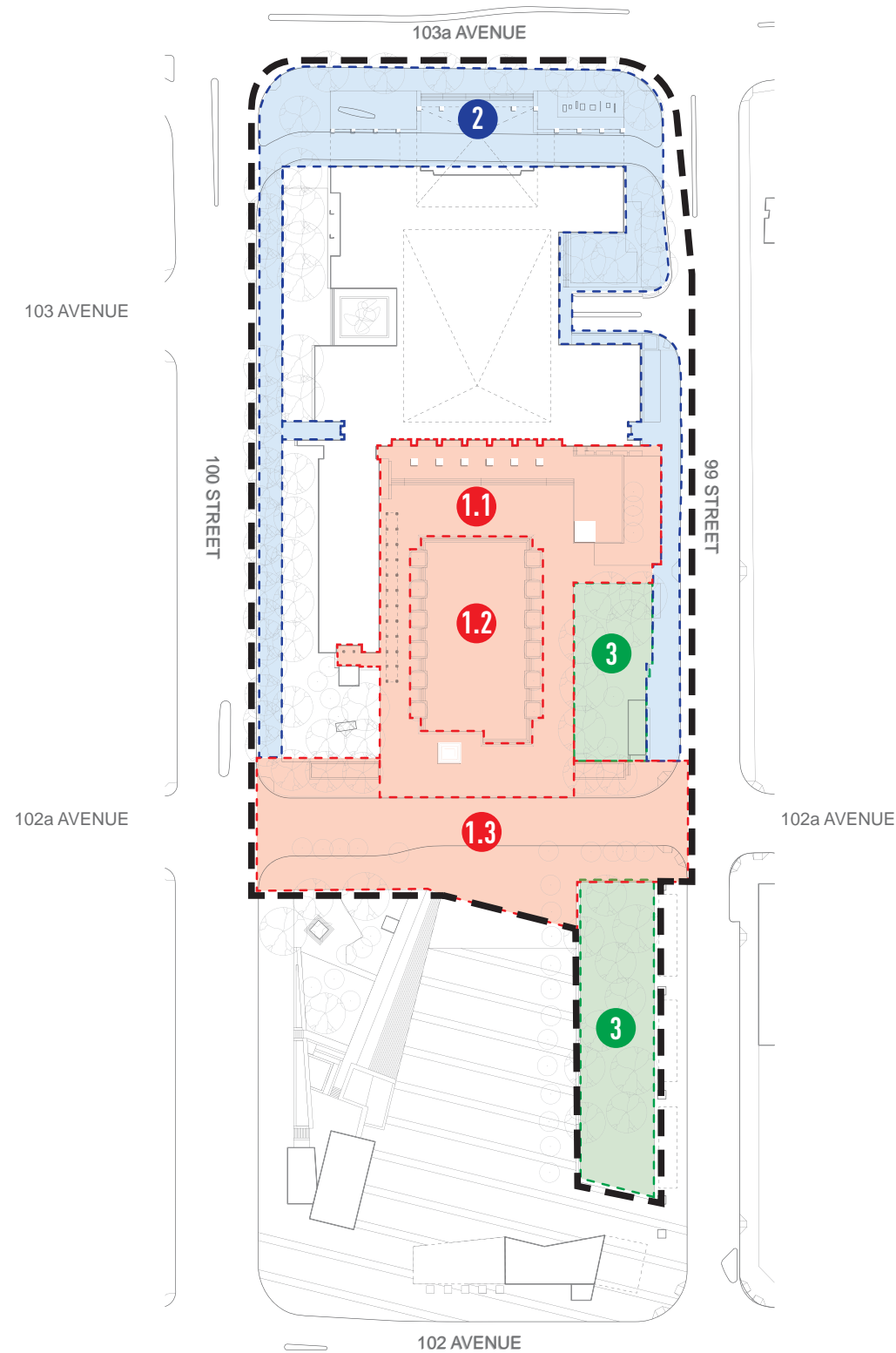
WHY



- 1.1 CITY HALL PLAZA
- 1.2 FOUNTAIN
- 1.3 102A AVENUE INTEGRATION
- 2 CITY HALL BLOCK PERIMETER + NORTH ENTRY
- 3 EAST GARDEN



## WHY - PHASE 1



### 1.1 CITY HALL PLAZA

- Custom precast pavers have a high replacement cost.
- Sub base failure is causing paving to shift and settle
- Ceremonial trees adjacent to fountain are in poor health and need to improve growing conditions.

### 1.2 FOUNTAIN

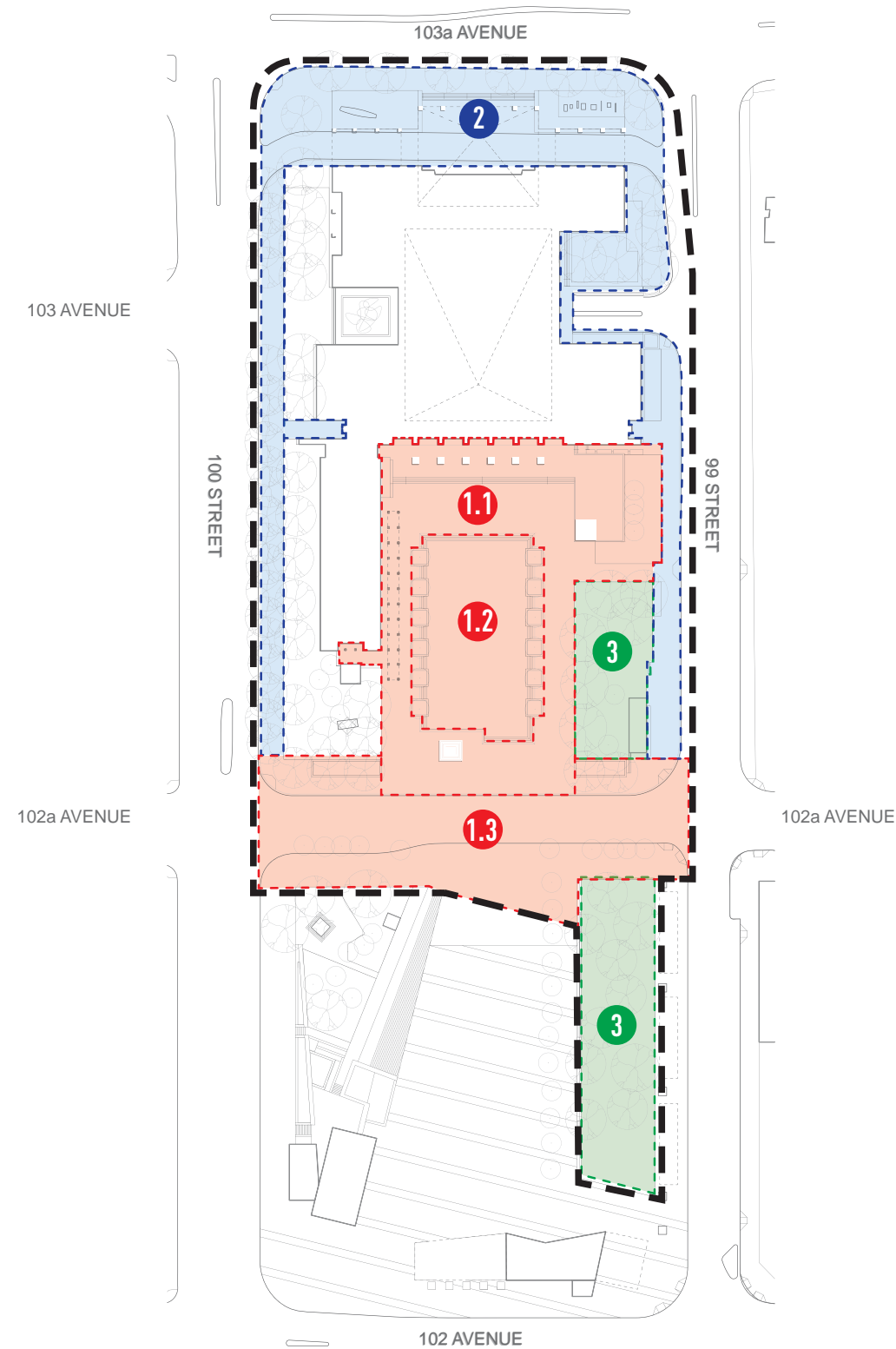
- To conform to Alberta Health Standards.
- Fountain slab is failing and is requiring replacement.
- Improve on life safety and security concerns
- Improve ability to clean and maintain fountain
- Fountain equipment is near end of life.

### 1.3 102A AVENUE INTEGRATION

- Create a more connected urban space
- Maintain festival access but close to common vehicle traffic



## WHY - PHASE 2

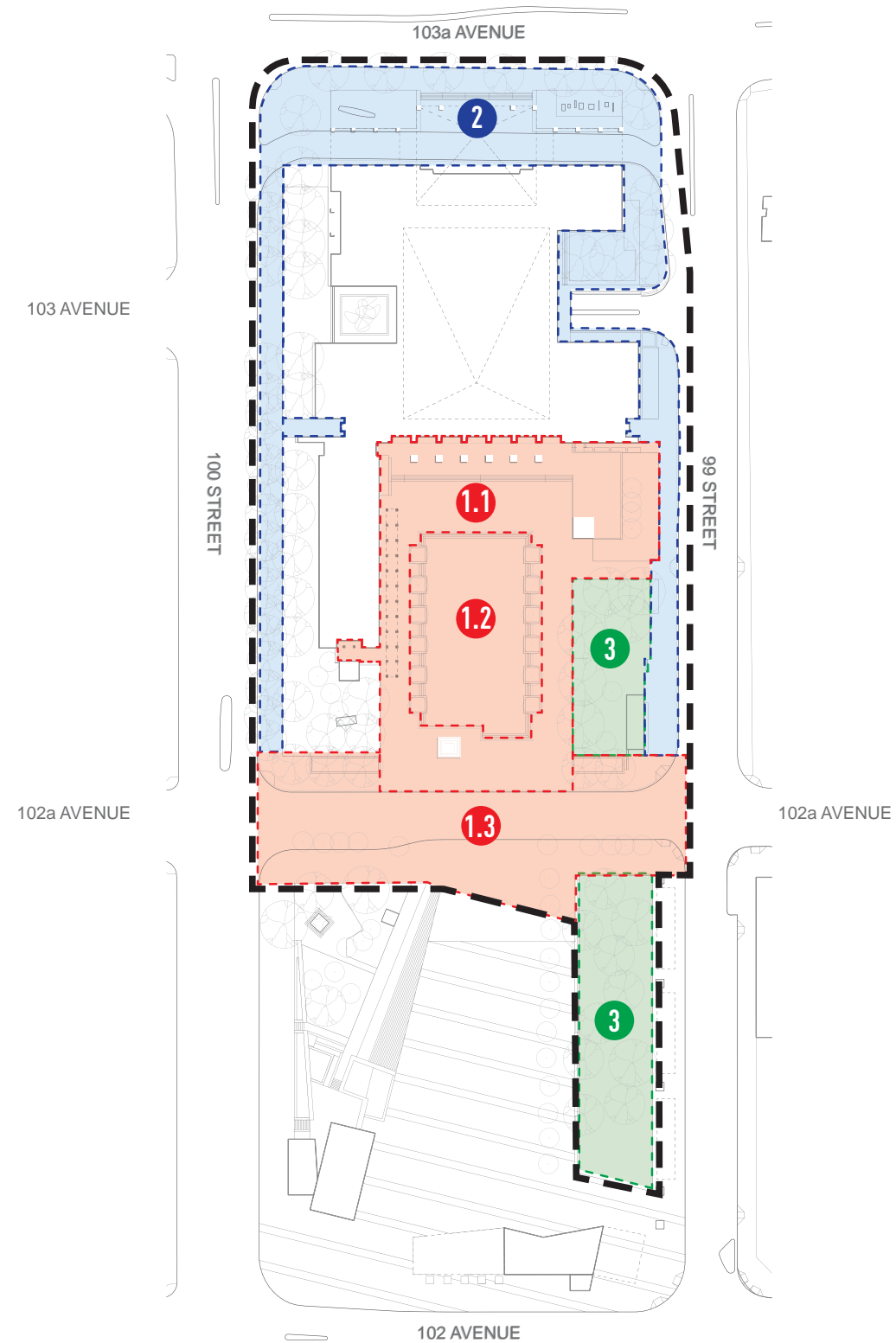


### 2 CITY HALL BLOCK PERIMETER + NORTH ENTRY

- Address grading deficiencies on the north side
- Address maintenance concerns with current precast paving
- Improve growing conditions of boulevard trees on 100 street



## WHY - PHASE 1

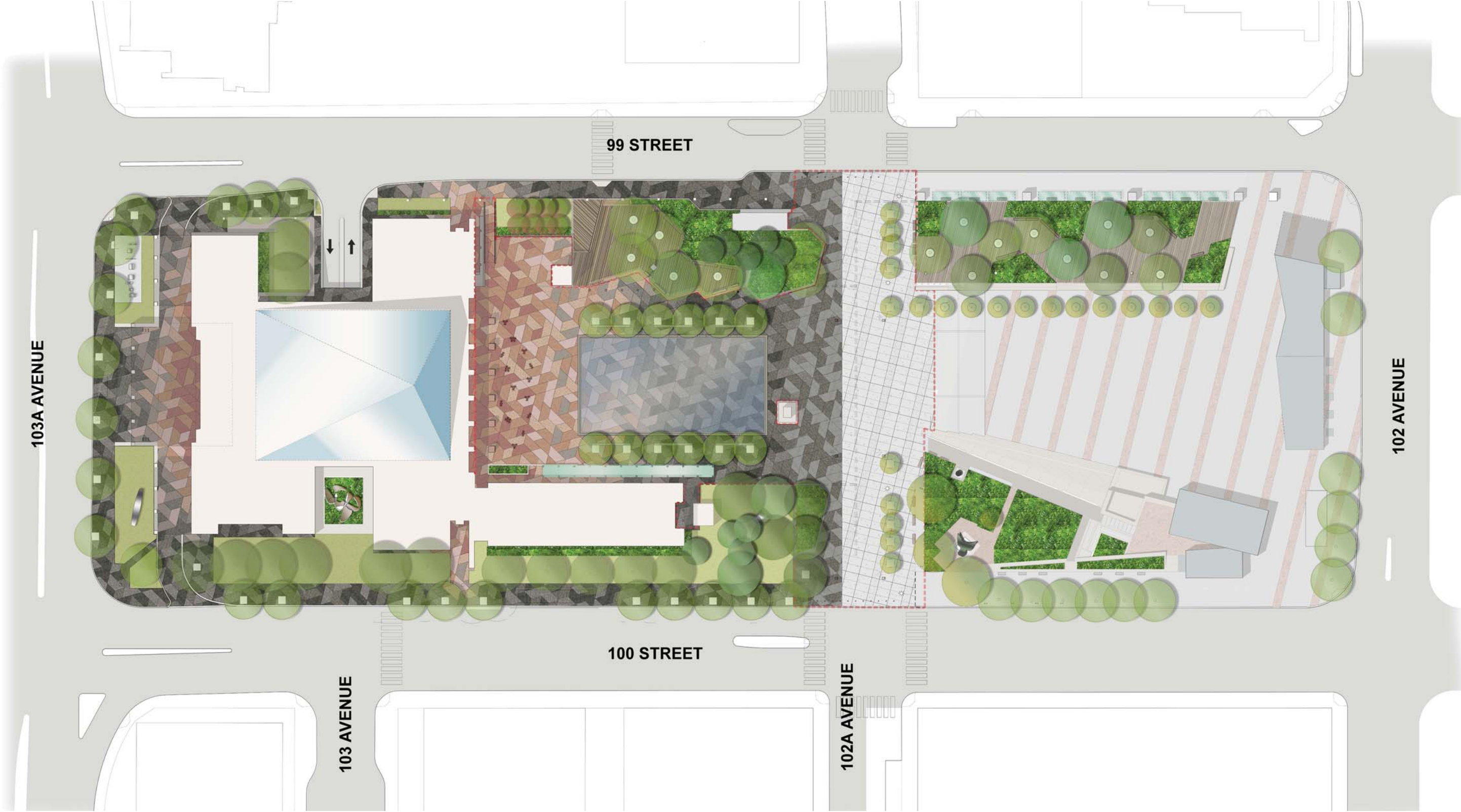


### 3 EAST GARDEN

- Address ground maintenance concerns with sod
- Provide more opportunities for structured and unstructured seating in the shade

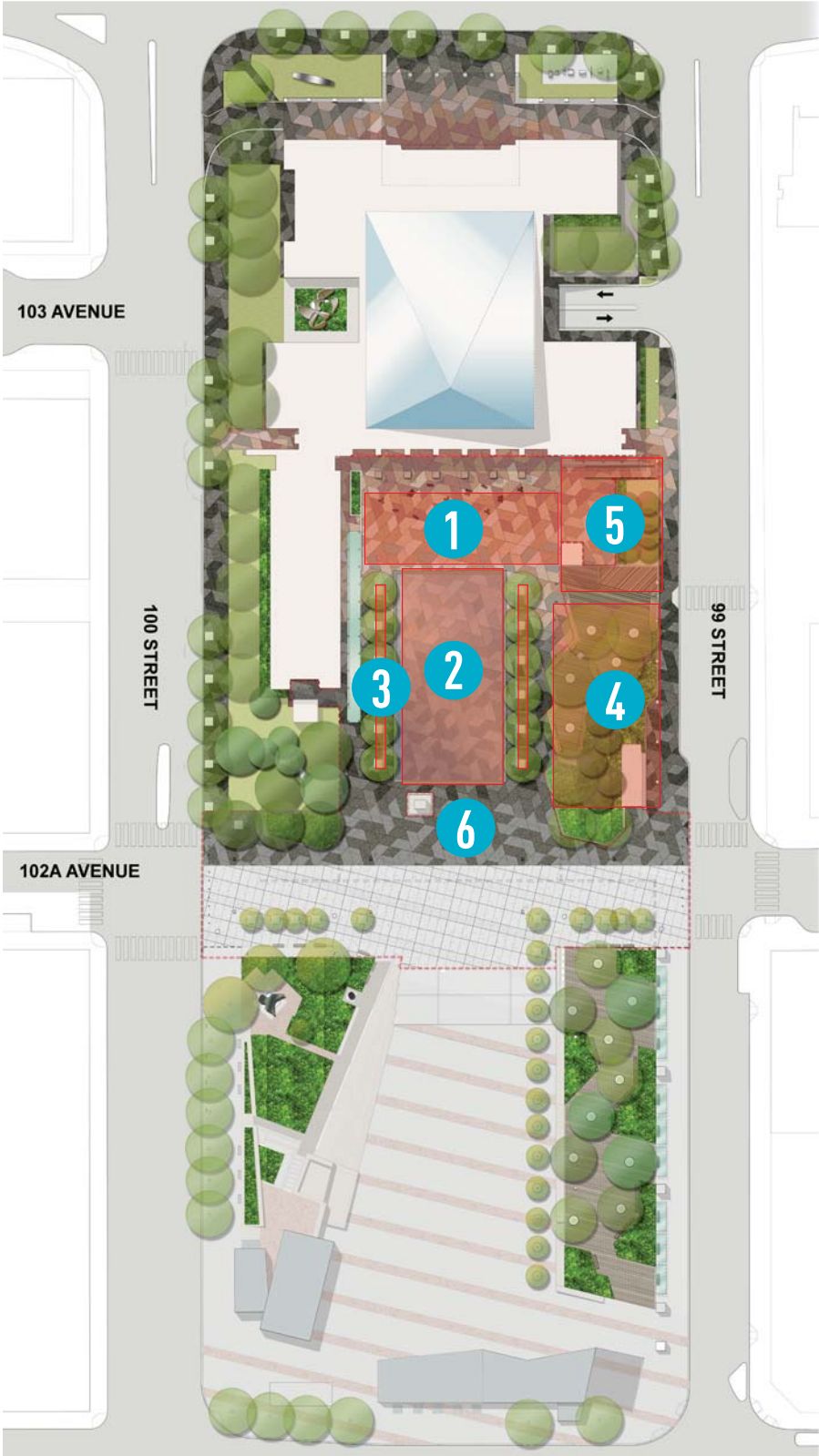


SITE PLAN





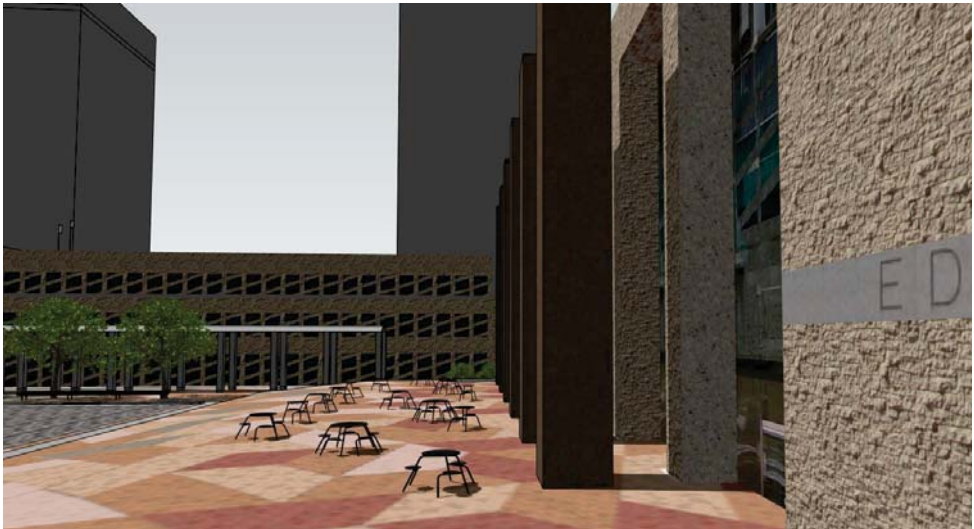
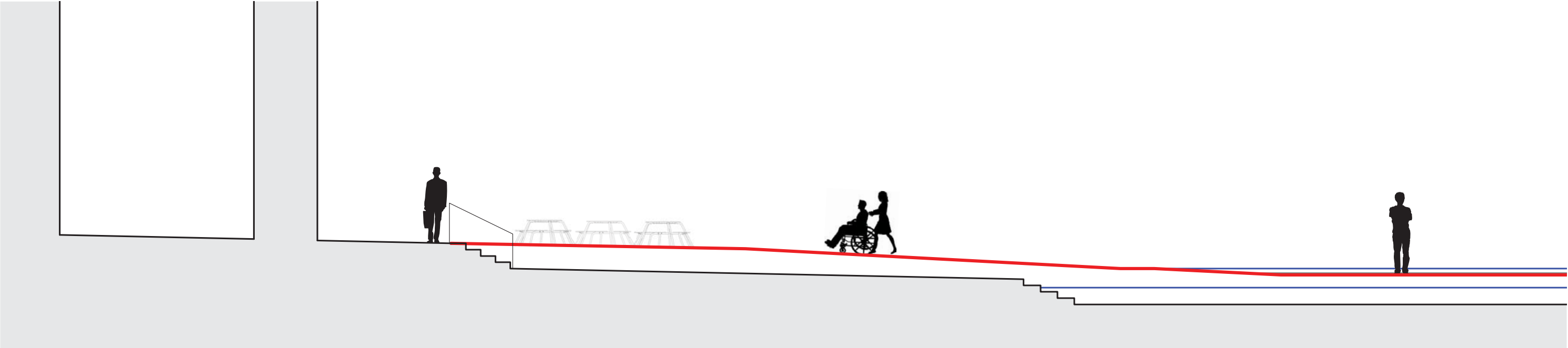
KEY CHANGES TO CITY HALL PLAZA



- 1 City Hall Entrance Forecourt
- 2 City Hall Fountain Renewal
- 3 City Hall Tree Colonnade
- 4 East Garden
- 5 Accessible Connection to 99th street
- 6 Surface Renewal

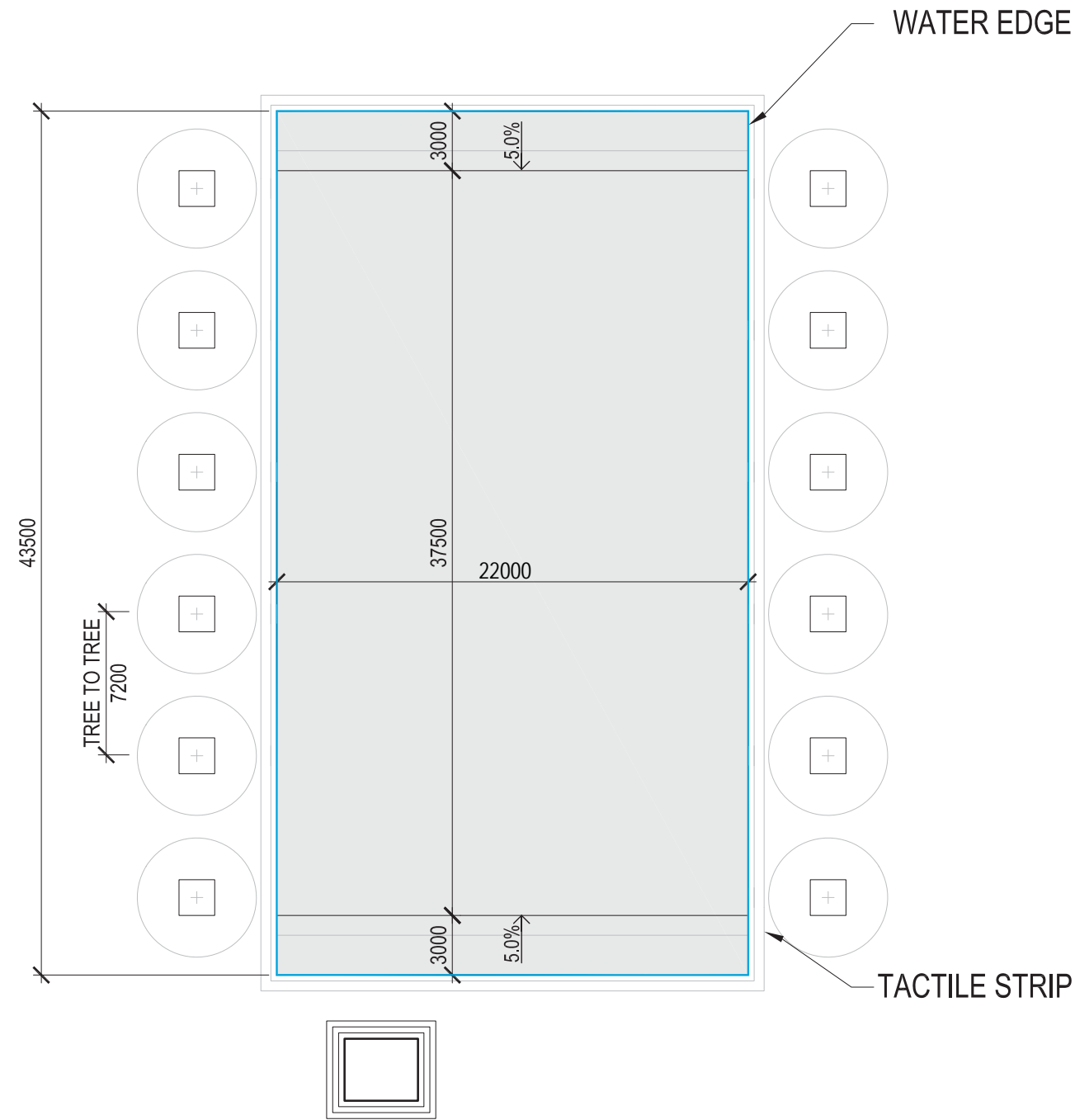


1. CITY HALL ENTRANCE FORCOURT

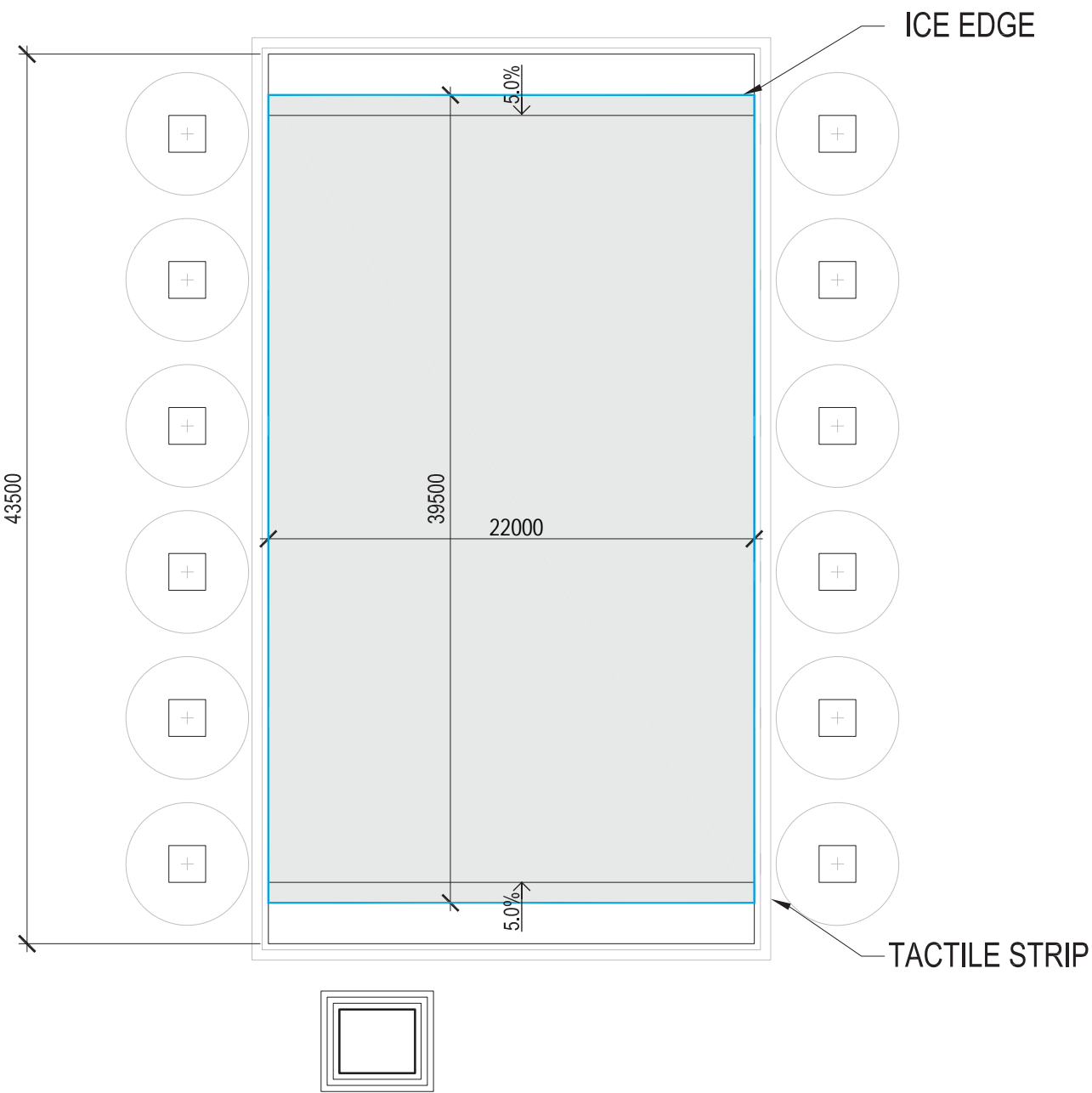




2. CITY HALL FOUNTAIN RENEWAL



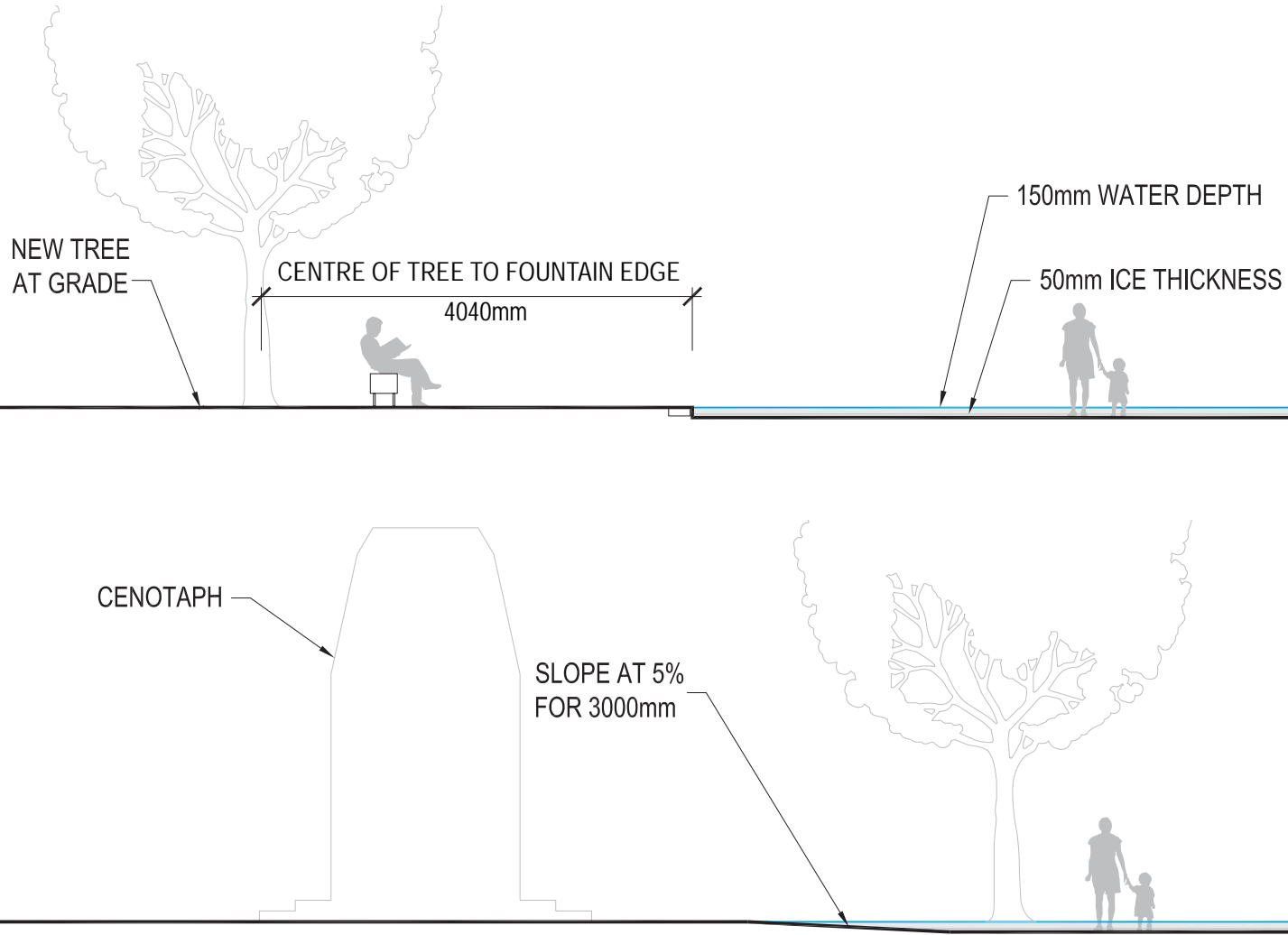
PLAN - 1:300



PLAN ICE - 1:300



FOUNTAIN - SECTION



Wading Stats

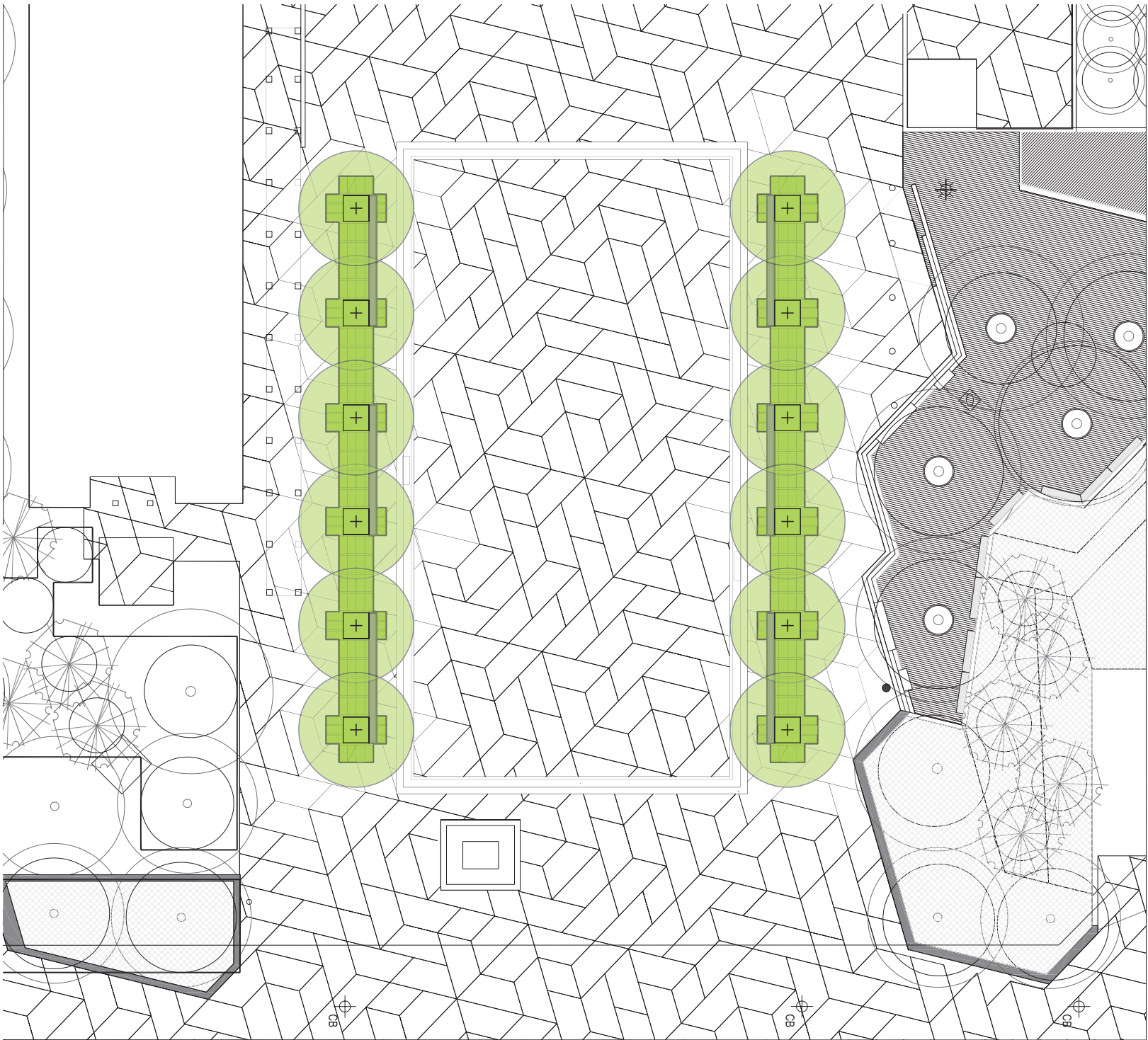
LENGTH	43 500 mm or 142'	WADING SURFACE AREA	957 m <sup>2</sup>
WIDTH	22 000 mm or 72'		
DEPTH	150 mm or 6"		

Ice Skating Stats

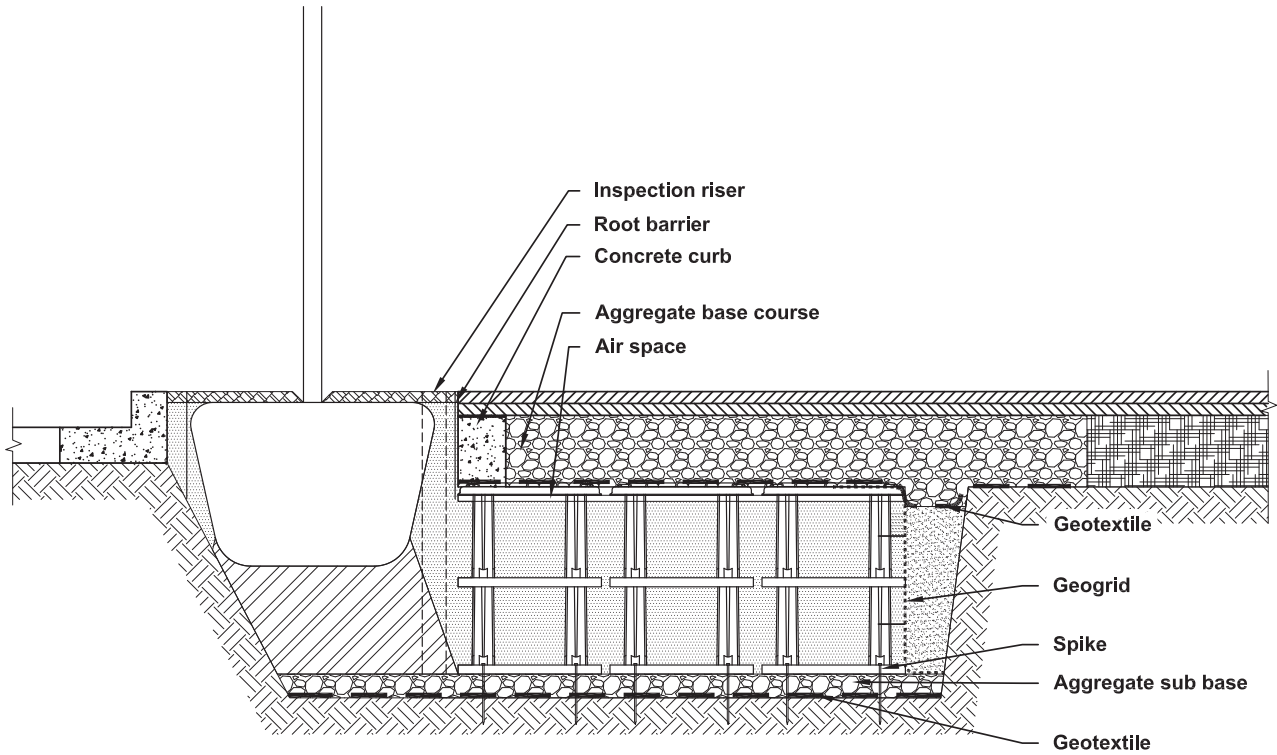
LENGTH	39 500 mm or 130'	SKATING AREA	869 m <sup>2</sup>
WIDTH	22 000 mm or 72'		
ICE DEPTH	(per current City of Edmonton procedures) 50mm or 2"		



3. CITY HALL TREE COLONNADE

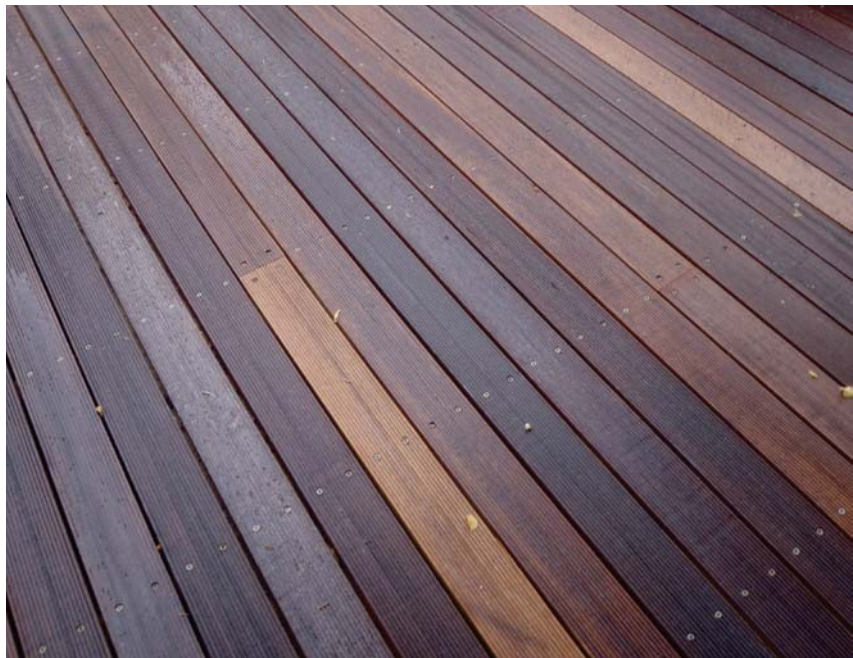
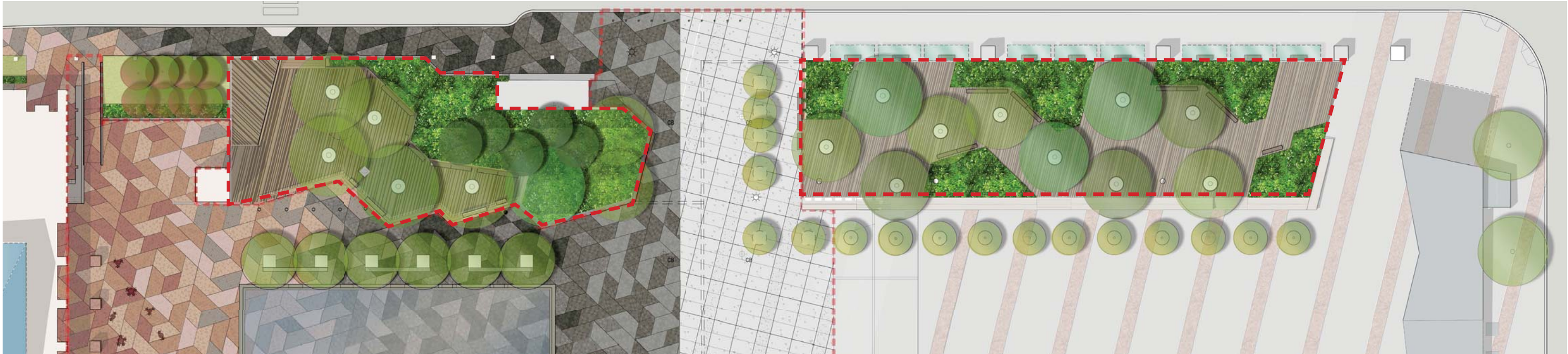


American Elm





4. EAST GARDEN



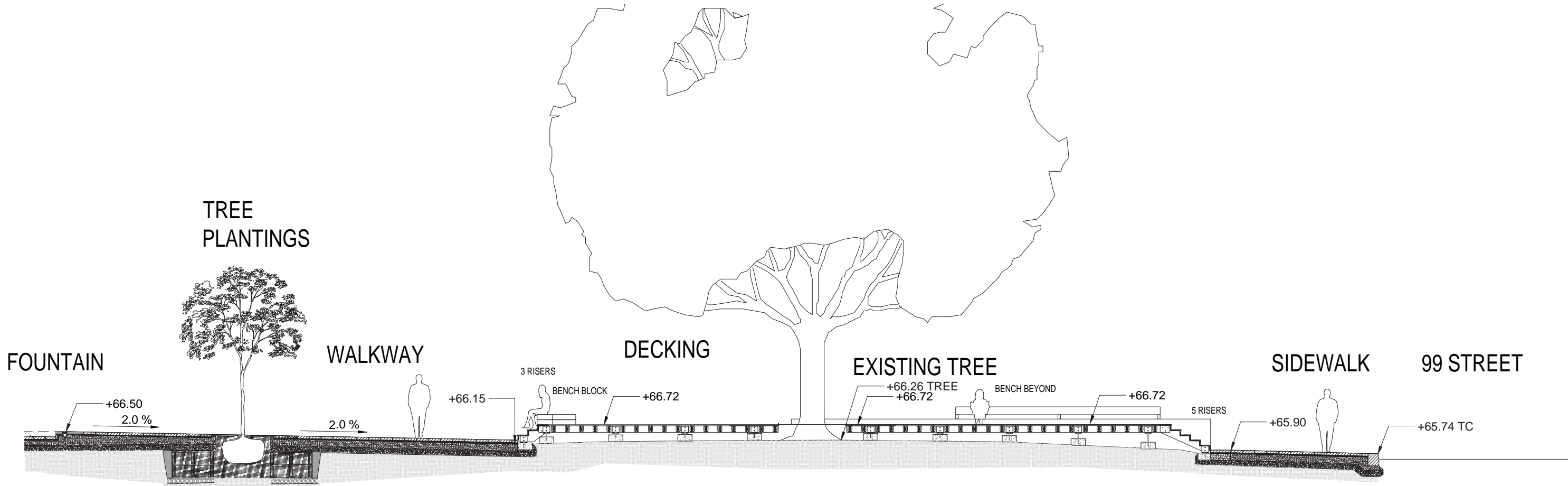
Yellow Balau Wood



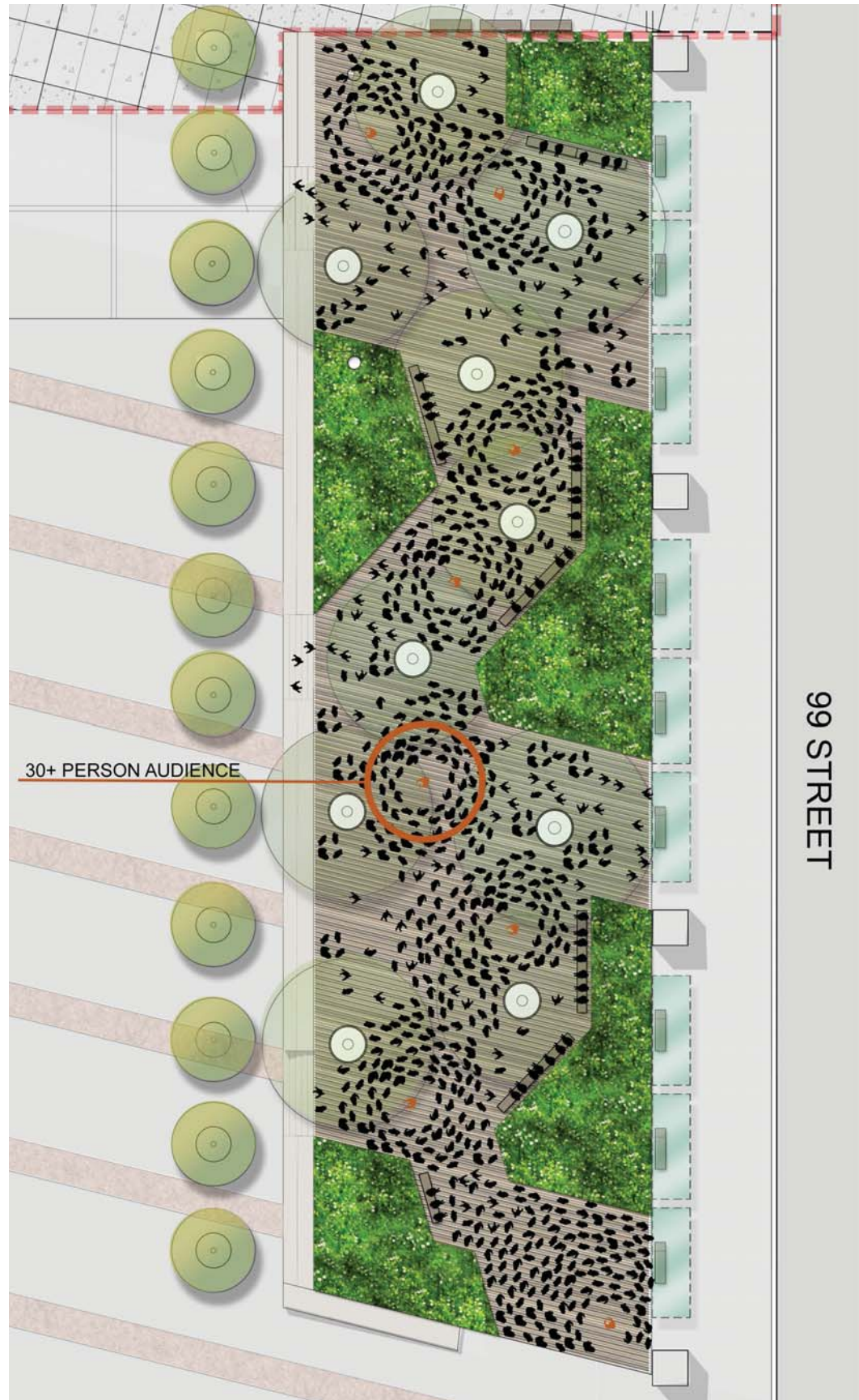
Site Furnishing



EAST GARDEN DETAILS







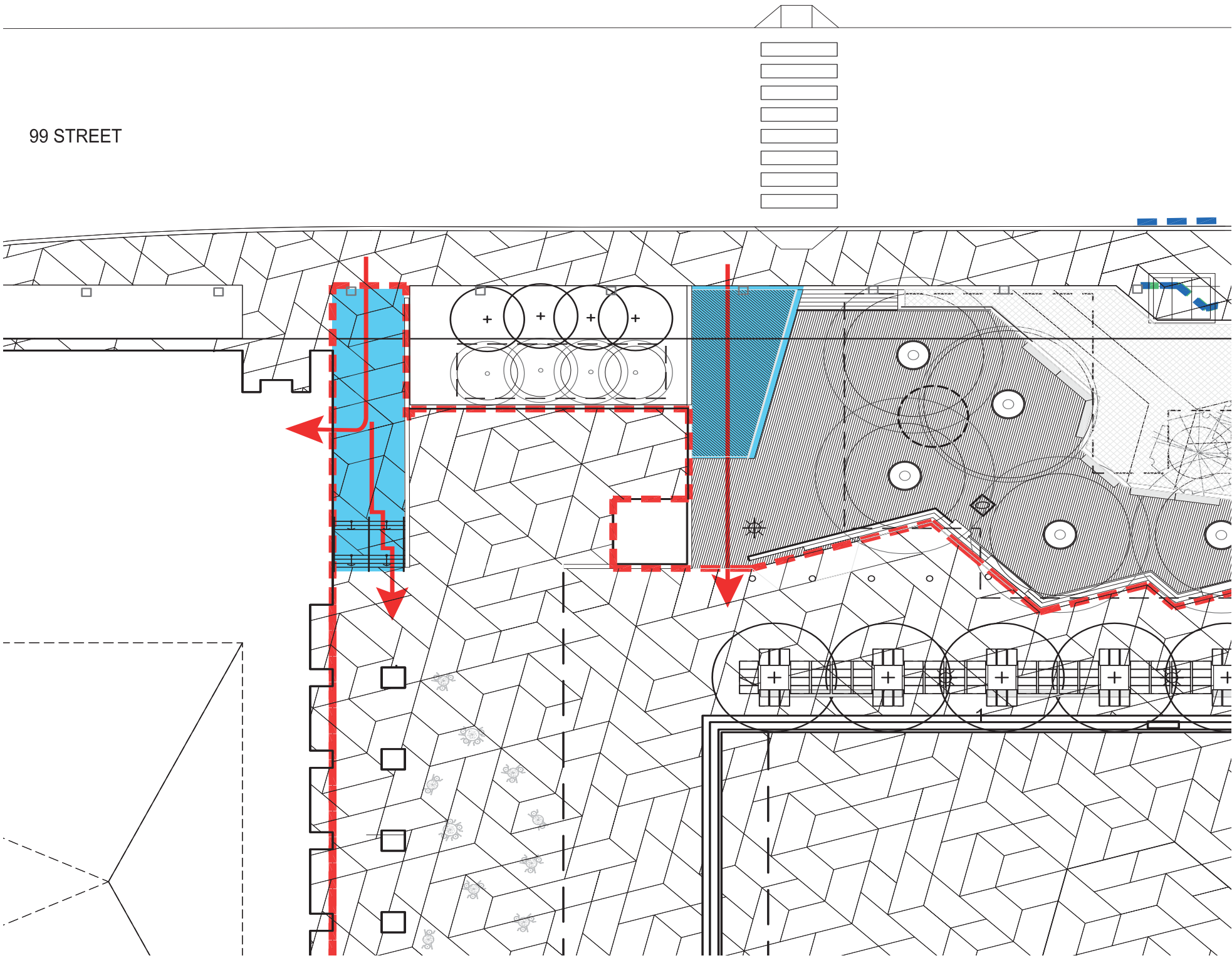


PLANTING PALLET

Golden Ray	Solomon's Seal	American Elm	American Elm	American Elm	Little Leaf Linden	Little Leaf Linden
						
Golden Ray	Solomon's Seal				Thunderchild Crabapple	Thunderchild Crabapple
						
						
Little Lime Hydrangea	Limelight Lime Hydrangea	Phantom Hydrangea	Miss Kim Lilac	Pigsqueak	Hosta 'Sum & Substance'	
						
Little Lime Hydrangea	Limelight Lime Hydrangea	Phantom Hydrangea	Miss Kim Lilac	Pigsqueak	Hosta 'Sum & Substance'	

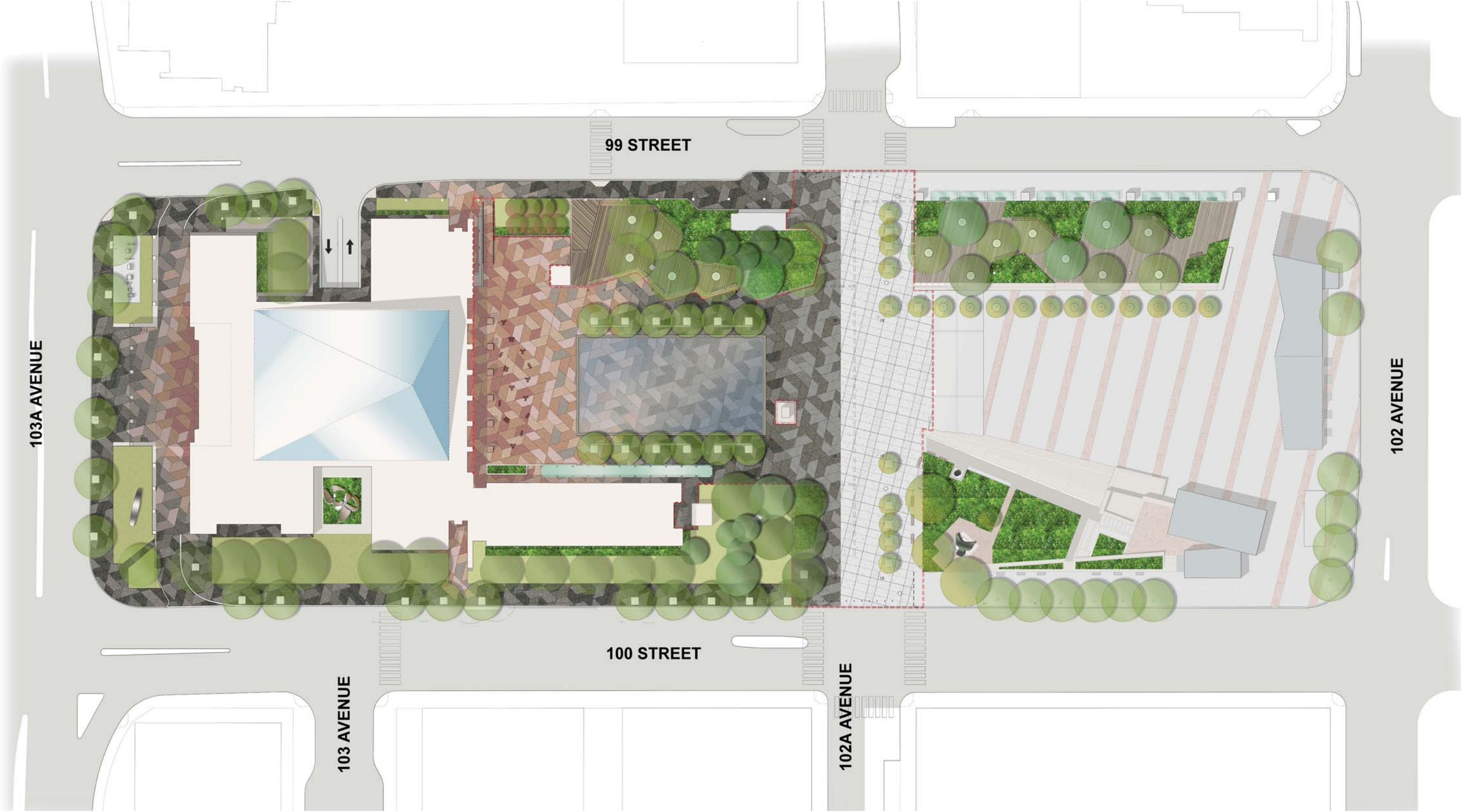


5. ACCESSIBLE CONNECTION TO 99TH STREET





6. SURFACE RENEWAL





*SURFACE RENEWAL*





*CITY HALL PLAZA - PAVING PATTERN AND DETAILS*

Granite paving palette option, supplier: polycor



R2 - Canadian Red, Sandblasted



R2 - Laurentian Pink, Thermal



R3 - Canadian Red, Waterjet



G1 - St - Sebastien, Thermal



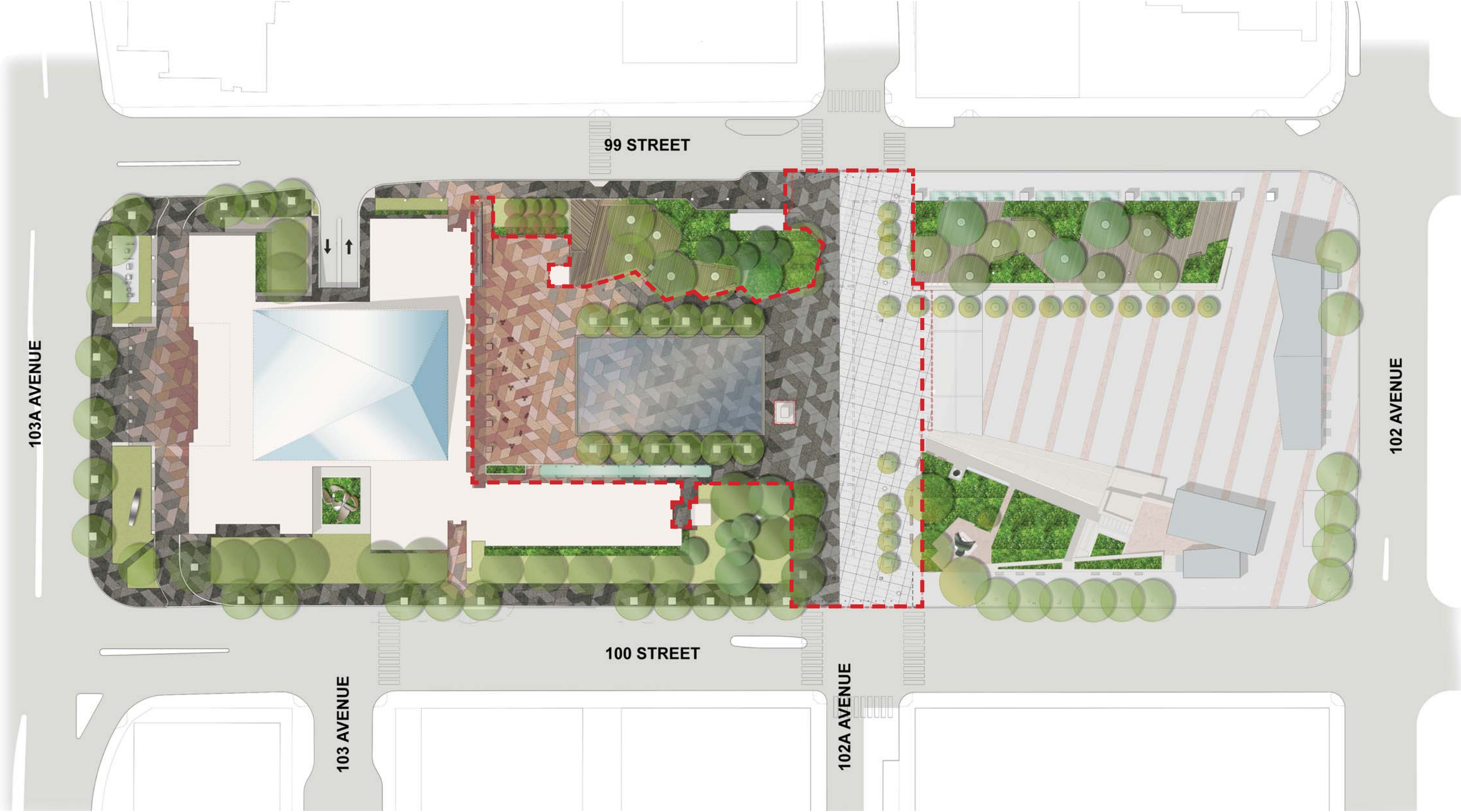
G2 - Titanium Pearl, Thermal



G3 - Saint-Henry Black, Thermal



SITE PLAN - PHASE 1





FOUNTAIN





WADING EXPERIENCE





WINTER SKATING

