

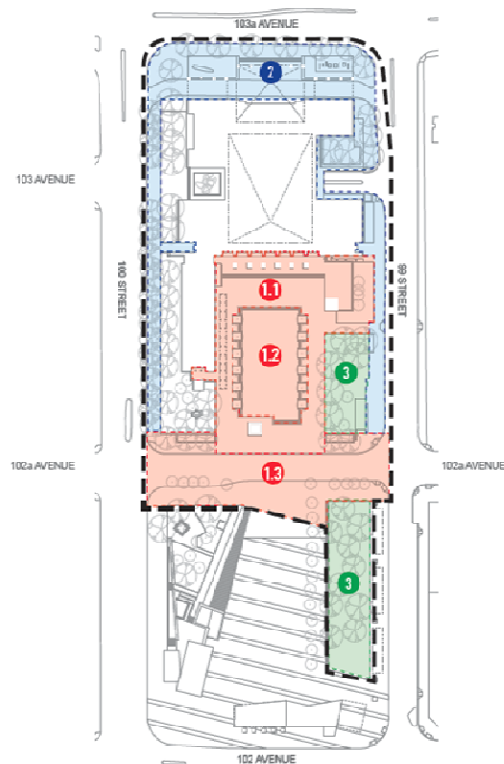
Integrated Infrastructure Services  
Infrastructure Planning and Design

# Civic Precinct Surface and Fountain Renewal Project - Update

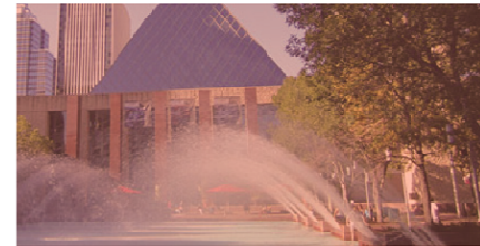
City Council  
February 13, 2018

Integrated Infrastructure Services | CR\_5472

## Integrated Infrastructure Services Infrastructure Planning and Design



- 1.1 CITY HALL PLAZA
- 1.2 FOUNTAIN
- 1.3 102A AVENUE INTEGRATION
- 2 CITY HALL BLOCK PERIMETER + NORTH ENTRY
- 3 EAST GARDEN

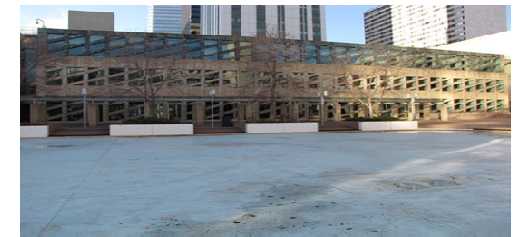


## Civic Precinct Surface and Fountain Renewal Project - Scope

## Integrated Infrastructure Services Infrastructure Planning and Design

### Project goals

- Safe public area
- Life-Cycle approach
- Urban tree canopy
- Barrier-free space
- Integrated space
- Pedestrian accessibility
- Health and Safety Standards
- Building standards
- Activities and events
- Four Seasons Use



Integrated Infrastructure Services  
Infrastructure Planning and Design



**Civic Precinct Surface and Fountain Renewal Site Plan**



## Fountain - Design Requirements

### Alberta Health Services Pool Regulations

- Anti-Entrapment
- Filtration

### Alberta Building Code requirements

- Fencing
- White Bottom

### City Policies

- C463 - Accessibility to City Owned and Occupied Buildings
- C534 - Outdoor Aquatics

### Other Considerations

- WinterCity
- Child Friendly

Integrated Infrastructure Services  
Infrastructure Planning and Design

## Celebration Square, Mississauga

- The design consolidated the Civic and Library Squares into a single space that is welcoming and accessible.
- The large water feature becomes a skating rink in the winter and can be transformed into an event square when needed.

**Similar Projects in Canada by Janet Rosenberg & Studio**



Integrated Infrastructure Services  
Infrastructure Planning and Design

## Newmarket Commons Riverwalk, Newmarket

- Riverwalk Commons has become an inviting destination, offering year-round activities, bringing a new energy and excitement to the area.



**Similar Projects in Canada by Janet Rosenberg &  
Studio**

## Guelph Market Square, Guelph

- The central water feature is used for wading on hot summer days and can be drained for events such as markets and concerts. In winter months, it becomes a skating rink.



**Similar Projects in Canada by Janet Rosenberg & Studio**



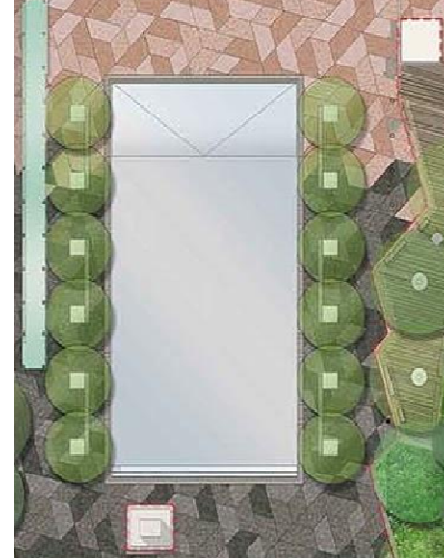
## Integrated Infrastructure Services Infrastructure Planning and Design



**150mm Deep Wading Pool**

### Current Design (150mm)

- improved overall plaza aesthetic
- universal access from both sides
- add 1000 m<sup>2</sup> of usable space for events, recreation and other activities during shoulder seasons
- reduced wading depth for users in summer season



**400mm Deep Wading Pool**

### Alternatives (400mm)

- white coloured basin
- universally accessible from one side
- ice skating surface reduced by 10%
- additional capital cost of \$400,000

### Option 1 (Fence)

- fence aesthetics would interfere with plaza integration

### Option 2 (Monitoring)

- Additional Operating Costs



# Operations

## 150mm Depth



**Hours of Operation:** remain the same;

**Staffing:** Decreases

- Daytime Active Water Supervision: Required
- Nighttime Monitoring: Not Required

**Construction Schedule:** maintained

**Safety and Security:** remains the same

## 400mm Depth



**Hours of Operation:** remain the same;

**Staffing:** Same as current

- Daytime Active Water Supervision: Required
- Nighttime Monitoring: Active Supervision Required

**Construction schedule:** impacted (possible festival impact)

**Safety and Security:** remains the same

# Experience



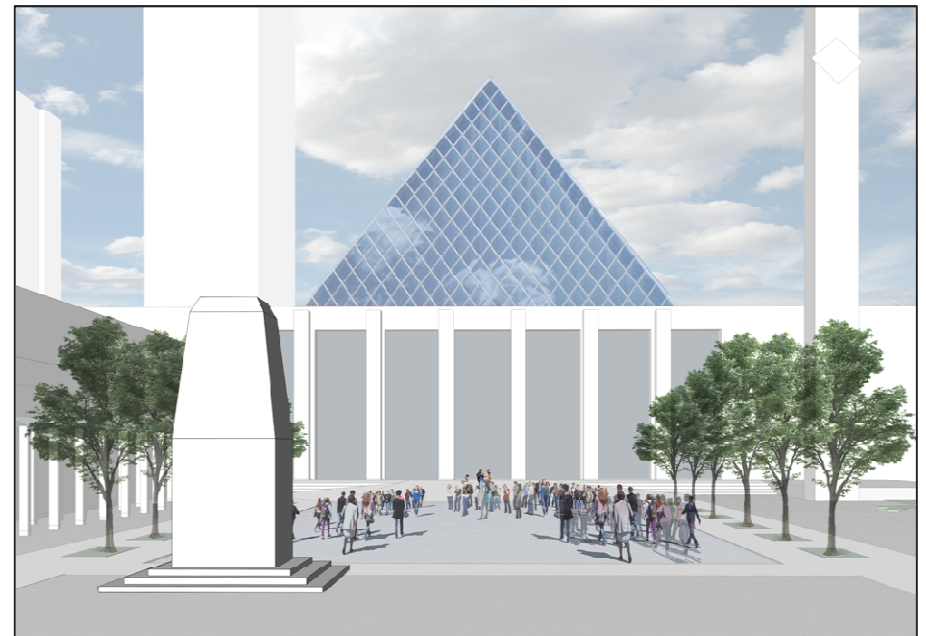
# Shoulder Season Program Opportunities

## 150mm

- Expanded gathering for ceremonies
- One time City events
- Farmers Market expansion
- Pop up play
- Performances / music
- Improved spring & fall aesthetics

## 400mm

- basin empty during shoulder season,
- programming potential remains the same as current





# Enhanced Accessibility



# Water Amenities

## City Hall Fountain

- 66,890 waders (2017)

## City of Edmonton Outdoor Pools

- 88,639 for 4 outdoor pools (2016)
- 190,000 for 4 outdoor pools (2017 - free admission, July - Sept)
- 2018 Borden Park Natural Swim Experience (opening 2018)

## Spray Decks

- 70 Spray Decks





Integrated Infrastructure Services  
Infrastructure Planning and Design

Thank you  
Questions?

The logo for the City of Edmonton, featuring the word "Edmonton" in a white, sans-serif font on a dark blue rectangular background.

Edmonton