



Integrated Infrastructure Services

LRT Expansion and Renewal

Edmonton

102 Avenue LRT Pedestrian Crosswalk Recommendation

Urban Planning Committee
May 31, 2022

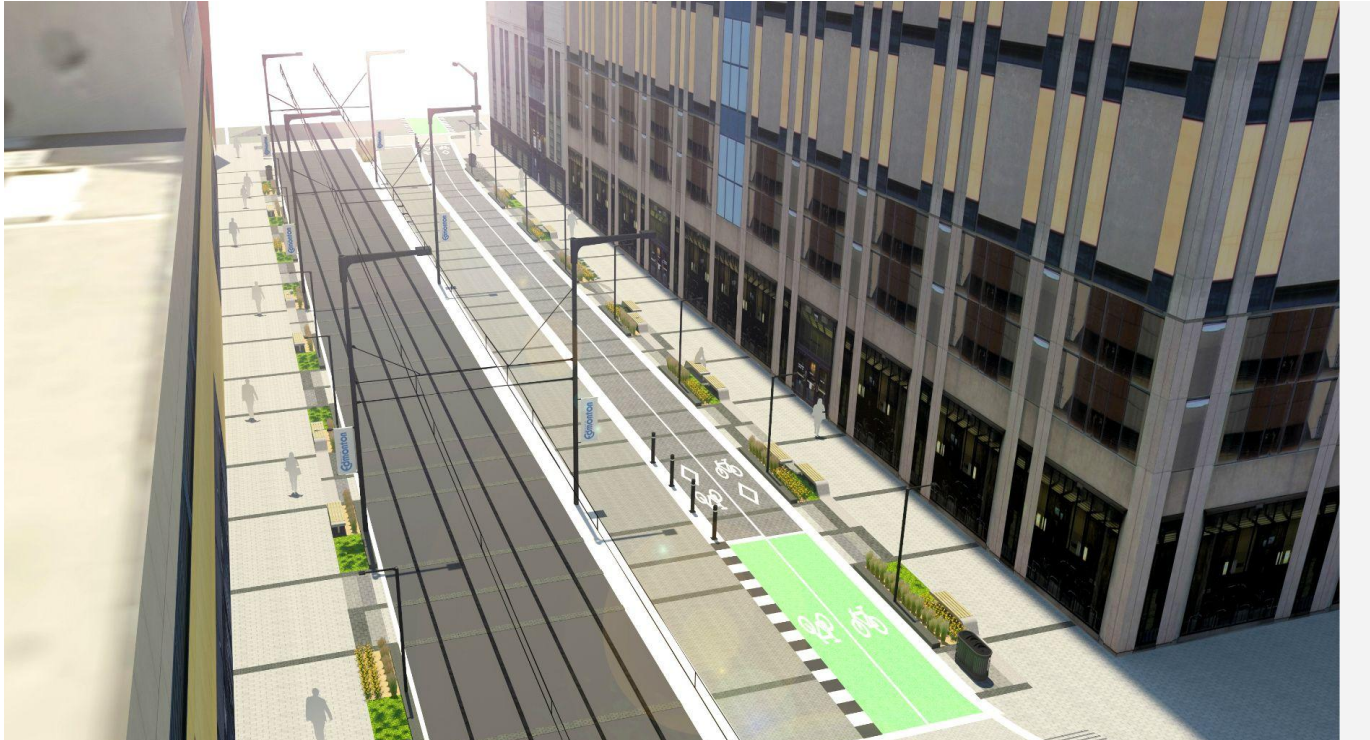
IIS00899

Background

Valley Line LRT

- Extensive public engagement as part of Downtown LRT and Southeast LRT projects (2007-2013)
- Public engagement helped to shape:
 - LRT alignment
 - Streetscape elements
 - Pedestrian connectivity
 - Cycle facilities
 - Roadways and access management
- Balancing the needs and impacts for various stakeholders

102 Avenue



102 Avenue rendering (between 100 and 100A Street), Looking East

102 Avenue



102 Avenue (between 100A and 101 Street), Looking West

102 Avenue Pedestrianization: What We Heard

- Engaged with 11 local stakeholders
- Desire to see LRT operational, and area reopening
- Change and construction fatigue
- Area safety and security
- COVID-19 recovery
- Localized vehicle access concerns and operational impacts
- Wider public engagement if permanent closures are considered

Summary & Considerations

- Current design was developed based on extensive public input
- Strong desire to see LRT operational - and time to adjust to new corridor with LRT
- Balance localized access concerns with future corridor opportunities
- If permanent closure - suggest a corridor study to undertake additional assessments and public engagement to maximize corridor potential

Thank you.

Questions?

Integrated Infrastructure Services
LRT Expansion and Renewal

Edmonton