



ITEM 3.21  
CHARTER BYLAW 20183  
MALMO PLAINS

DEVELOPMENT  
SERVICES  
JULY 5, 2022

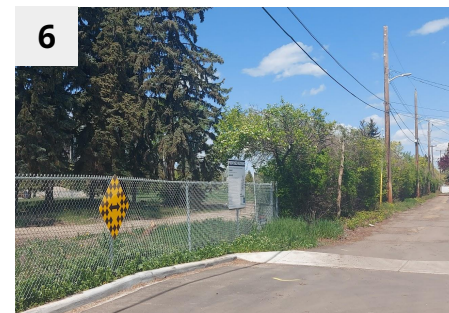
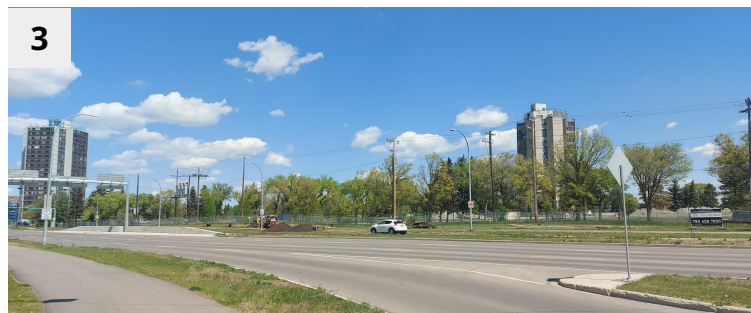
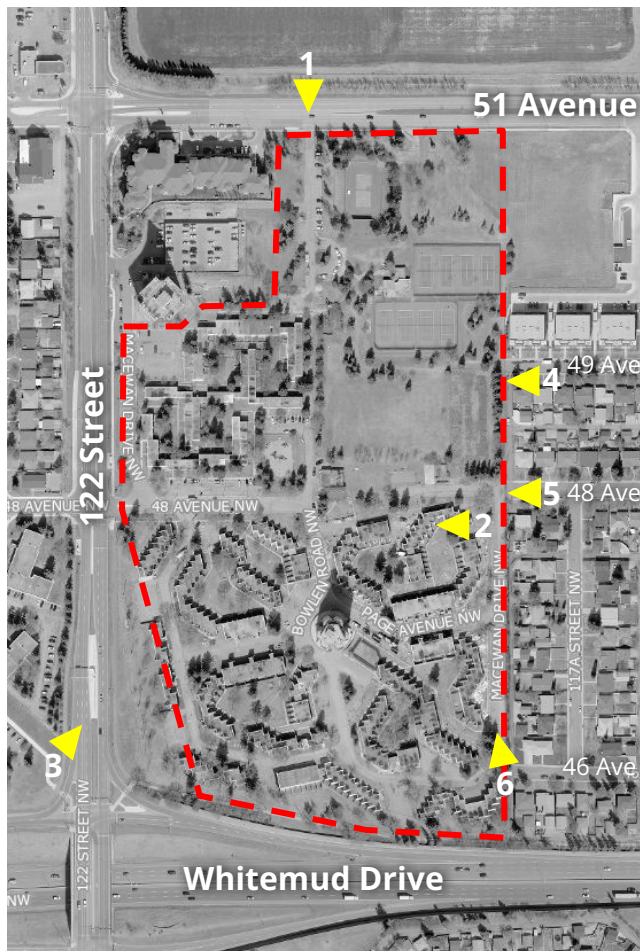








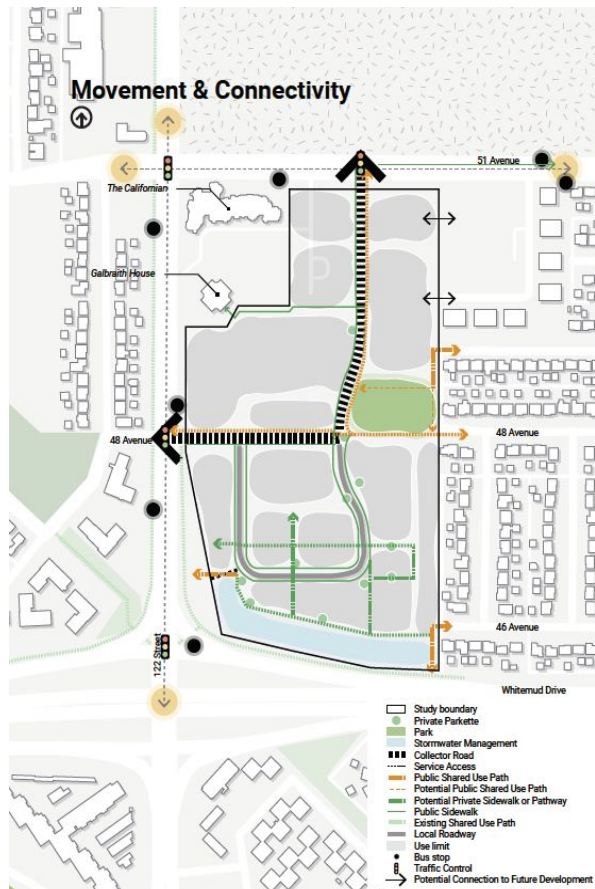
## SITE VIEW



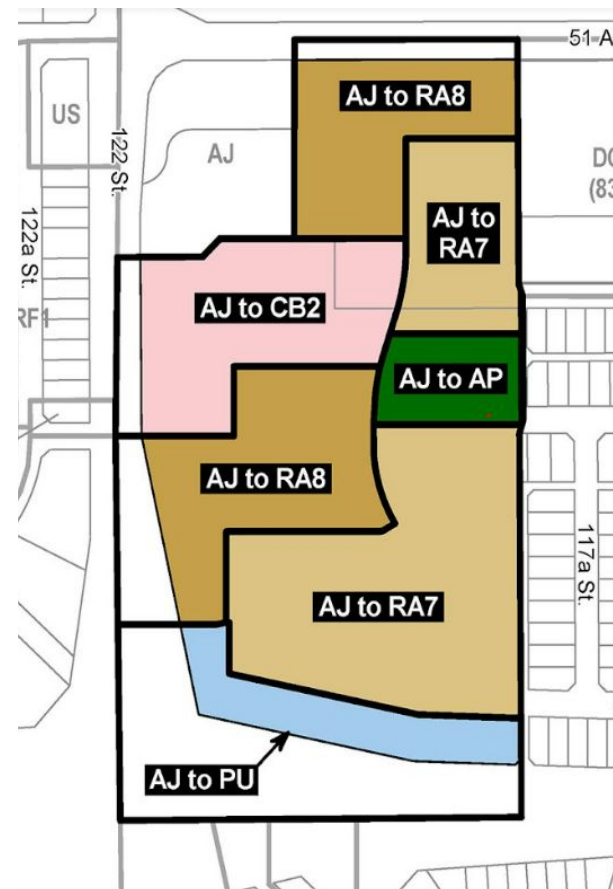
# PROPOSED ZONING and MASTER PLAN



Michener Park Land Use Concept



Movement and Connectivity



Rezoning



## Comments

- Support for commercial uses, increased density and diversity housing
- Property values and obstructed views
- Consider additional park spaces with public connectivity
- Discourage vehicular traffic to and from the east
- Traffic, parking, congestion
- Encourage better integration with surrounding properties



ADVANCED NOTICE  
January 14, 2022



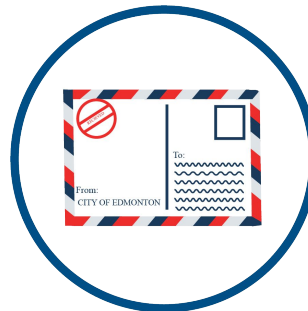
CITY WEBPAGE  
January 28, 2022



SITE SIGNAGE  
February 15, 2022



ENGAGED EDMONTON  
April 26 -  
May 16, 2022



PUBLIC HEARING  
NOTICE  
June 9, 2022



JOURNAL AD  
June 17 &  
June 25, 2022







Edmonton