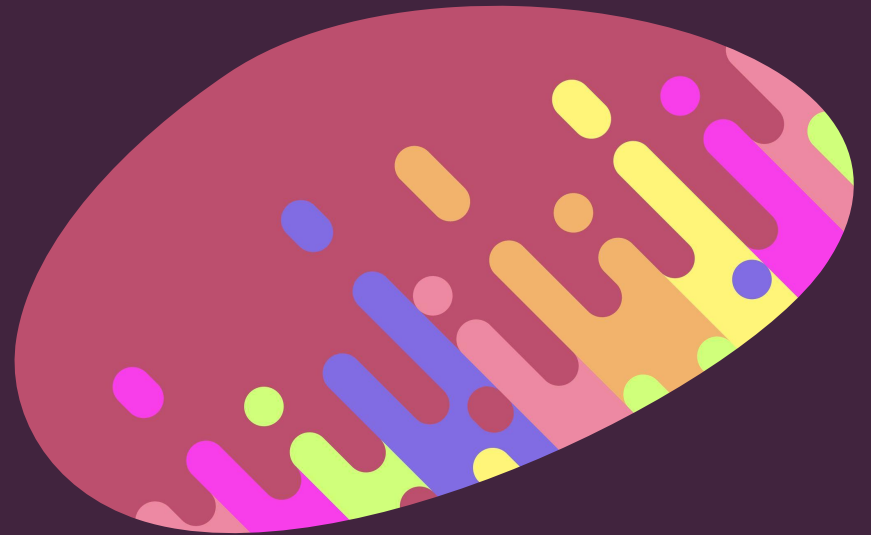
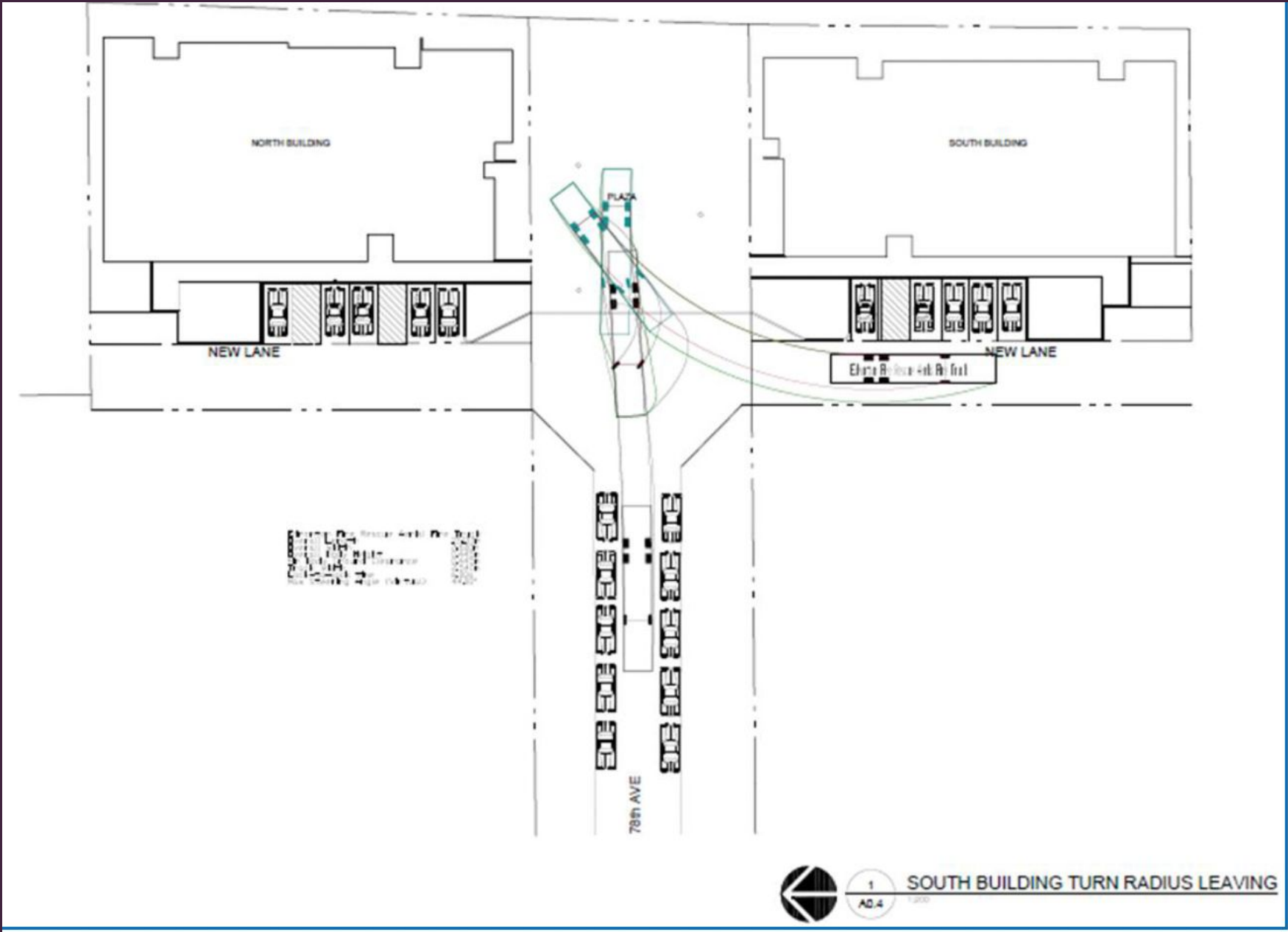


# Fire trucks



# After an emergency call...

- A fire truck will have to back up to exit
- Current plan:
  - The firetrucks will use the plaza-connector to back up.



1  
AD.4

SOUTH BUILDING TURN RADIUS LEAVING

# Issue with this plan...

- Half of the plaza connector space will need to be designed for vehicle access and will not be able to have any permanent structures.
- This opens up the possibility of other vehicles using the plaza-connector for parking and loading.

# Community proposal

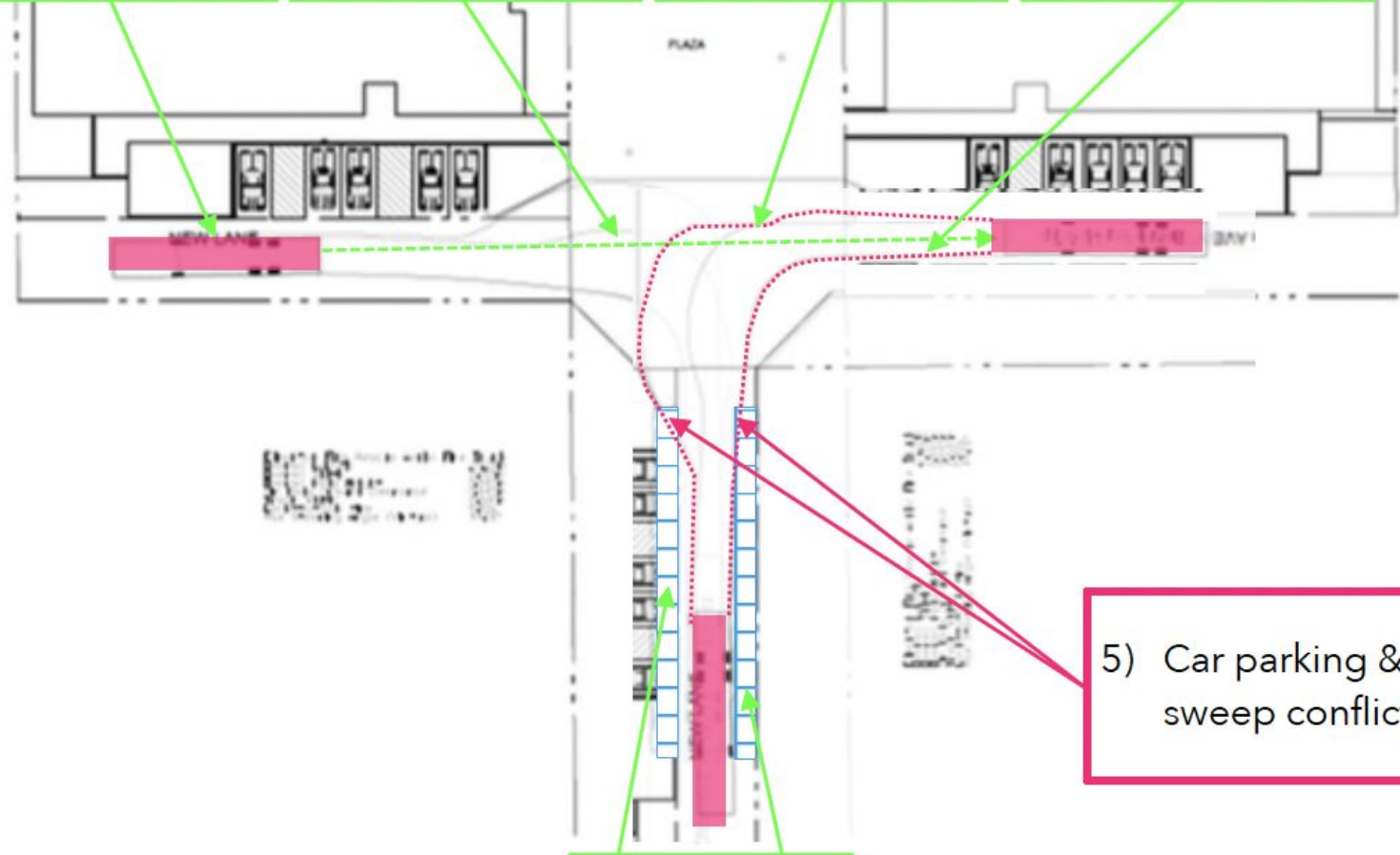
- Use the N-S lane to back up
- Plaza-connector will not be accessible by vehicles
- City concern: this will eliminate street parking

1) Truck starts backing from here

2) Truck backs across 78 Avenue

3) Right side fire truck sweep

4) Left side fire truck sweep



5) Car parking & sweep conflicts

Parked Cars

- Despite multiple requests, the community remains unclear why street parking would need to be removed
- It may be true, but why hasn't the city provided us information to that end
  - How can we support or oppose this if our own city cannot provide us with the right information
- Is less street parking an issue anyway?

# Parking for Metro78

- Estimate 304 EXTRA cars/day for Metro 78
  - Metro78 has 5 parking spots
  - Street parking on 78 Avenue is normally at least 50% occupied
  - The Transport Impact Assessment (TIA) has not assessed whether there will be sufficient parking spots.





# Fire trucks

- But so much more!
    - Traffic
    - Parking
    - Communication
    - Respect
- 