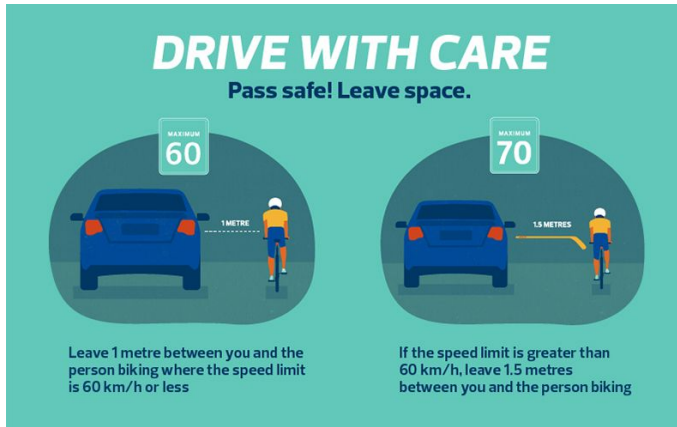


Urban Planning and Economy

**Bike Network Redeveloping Area
Completion Options**

Nathan Smith, Senior Engineer
nathan.smith@edmonton.ca

Rapid Implementation Approach

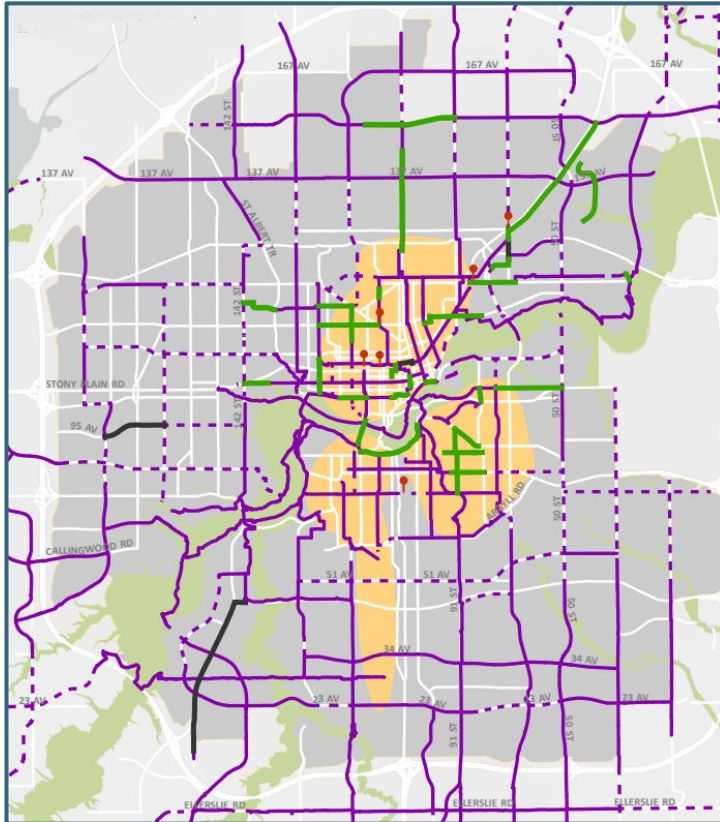


- Focus on District Connector Network
- Manage public engagement
- Proactive communication
- Leverage adaptable infrastructure
- Re-prioritize implementation phasing

Implementation Options

	Implementation Focus	2023-2026 Budget Cycle	
		<u>Capital Costs</u>	<u>Annual Operating Costs</u>
A	District connector network by 2026	\$170 million	\$11 million
B	District connector network by 2030	\$90 million	\$6 million
C	Near term priorities and areas with high bike trip potential by 2026	\$130 million	\$9 million
D	Near term priorities by 2030	\$25 million	\$2 million

District Connector Network



Legend

- Near Term Priority
- Existing
- Future
- Funded
- Barriers: Near Term Priority
- Areas of Higher Bike Trip Potential
- River Valley and Ravine System
- Redeveloping Area

Additional Actions



Next Steps

- Continue to implement the Bike Plan in alignment with other projects.
- At Council's direction, Administration will present capital and operating funding requests as part 2023-2026 budget deliberations.

Questions and Thank You

Nathan Smith, Senior Engineer
nathan.smith@edmonton.ca

Edmonton