



Parks and Road Services

Edmonton

CO01284rev Community-Initiated Proposals for Off-leash Dog Parks

November 21, 2022
Community and Public Services Committee

Introduction



Current Off-Leash Establishment Processes

City-led Capital Projects: City-funded projects that are designed, build, maintained and operated by the City.

Developer Projects: Built by developers as part of new neighbourhoods, then maintained and operated by the City.

Temporary Off-Leash Pilot Program: Fully enclosed amenities on league licensed-land (winter ice rinks, tennis and basketball courts)



New Methods for Off-Leash Area Establishment

Community Group Led Construction: well established method for community groups to fund, construct and operate infrastructure within licenced areas

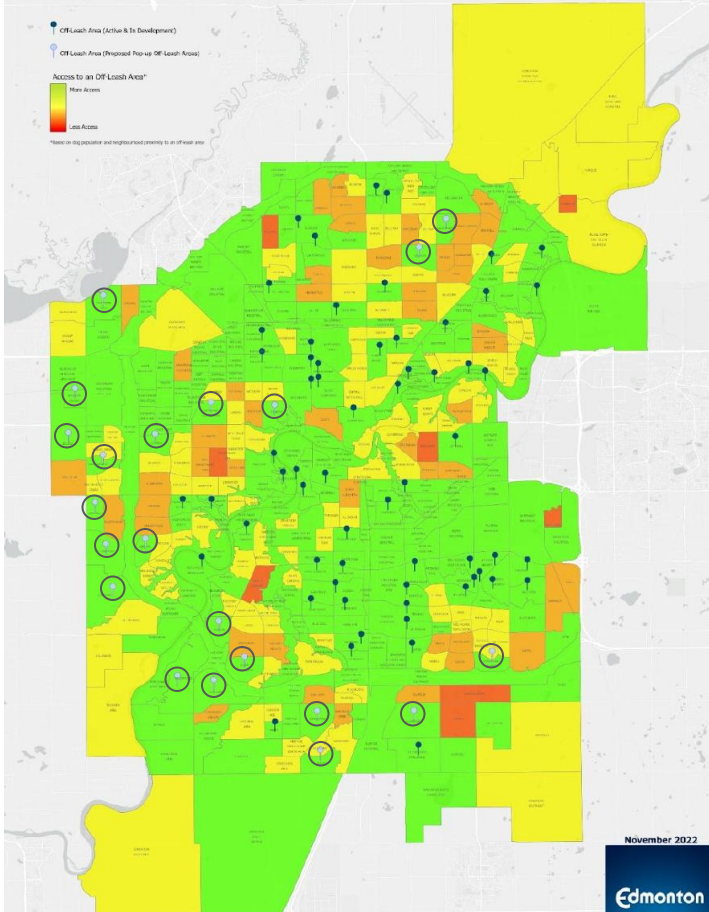
Pop Up Dog Park Program: new program to quickly establish temporary OLAs within high need neighbourhoods and use these sites to engage with residents prior to developing permanent OLAs



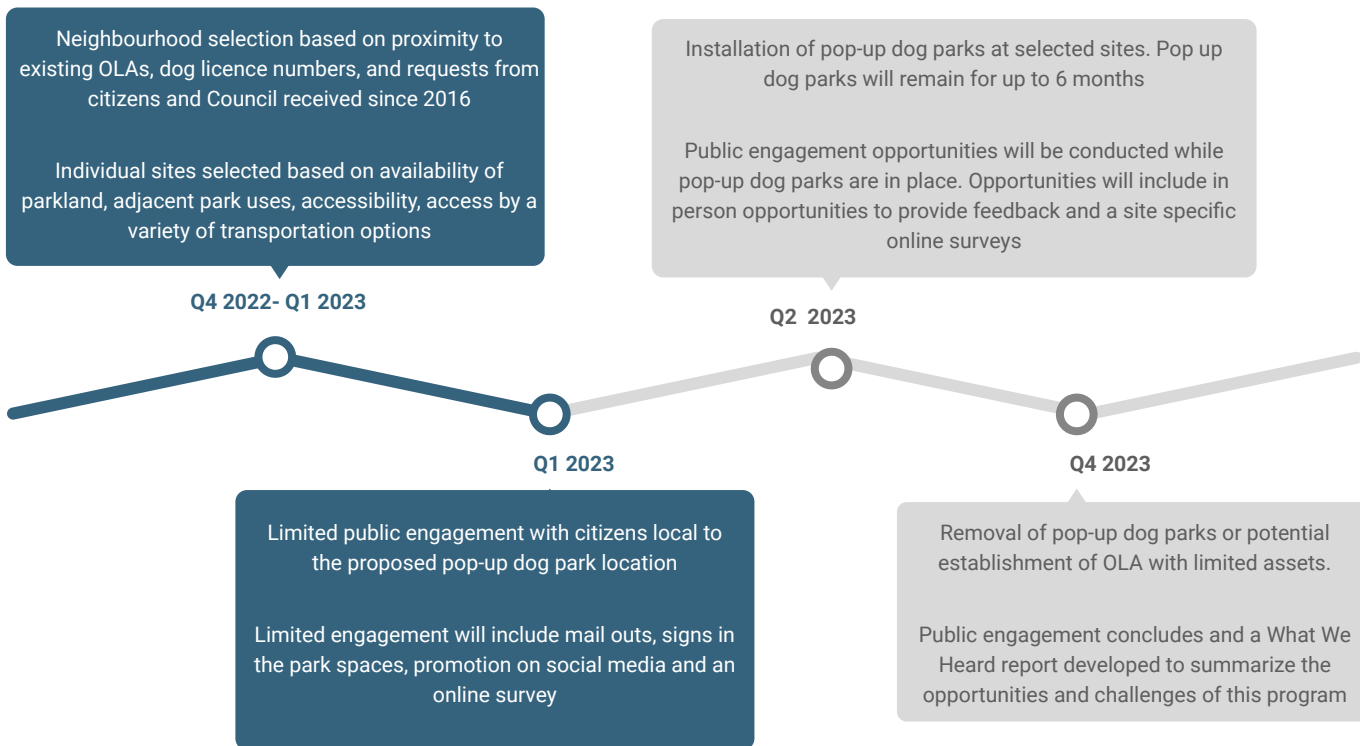
City of Edmonton

Dog Off-Leash Area Access

With Proposed Pop-up Dog Park Neighbourhoods



Pop Up Dog Park Program



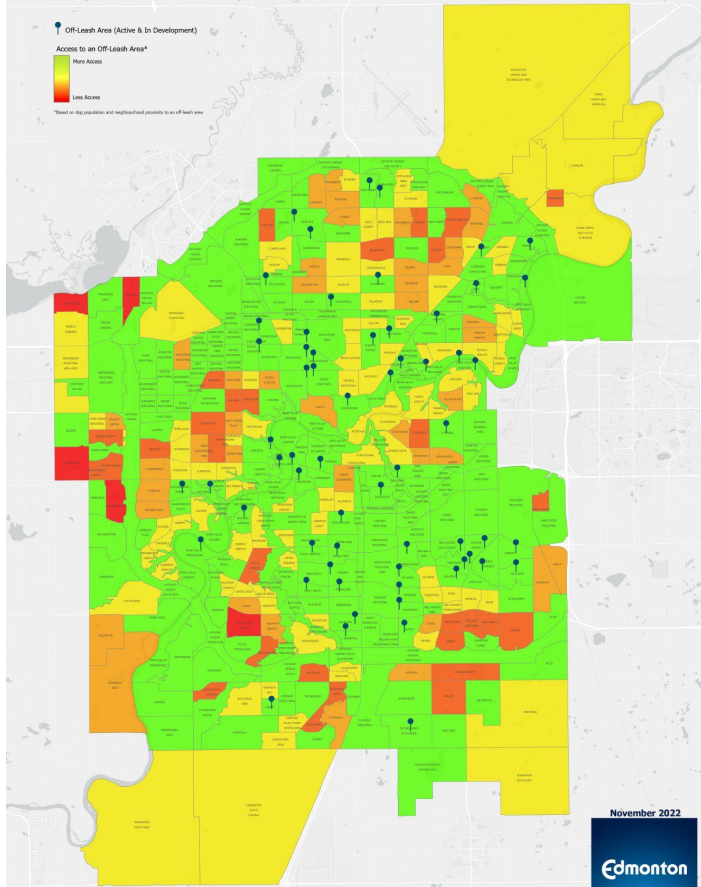
Next Steps

- Continue with city-led capital and developer-led projects
- Evaluation of the Temporary Off-leash Pilot Program
- Integration of OLAs into Community Group Led Construction processes
- Launch of the Pop-up Dog Park program



City of Edmonton

Dog Off-Leash Area Access



November 2022

Edmonton

Edmonton