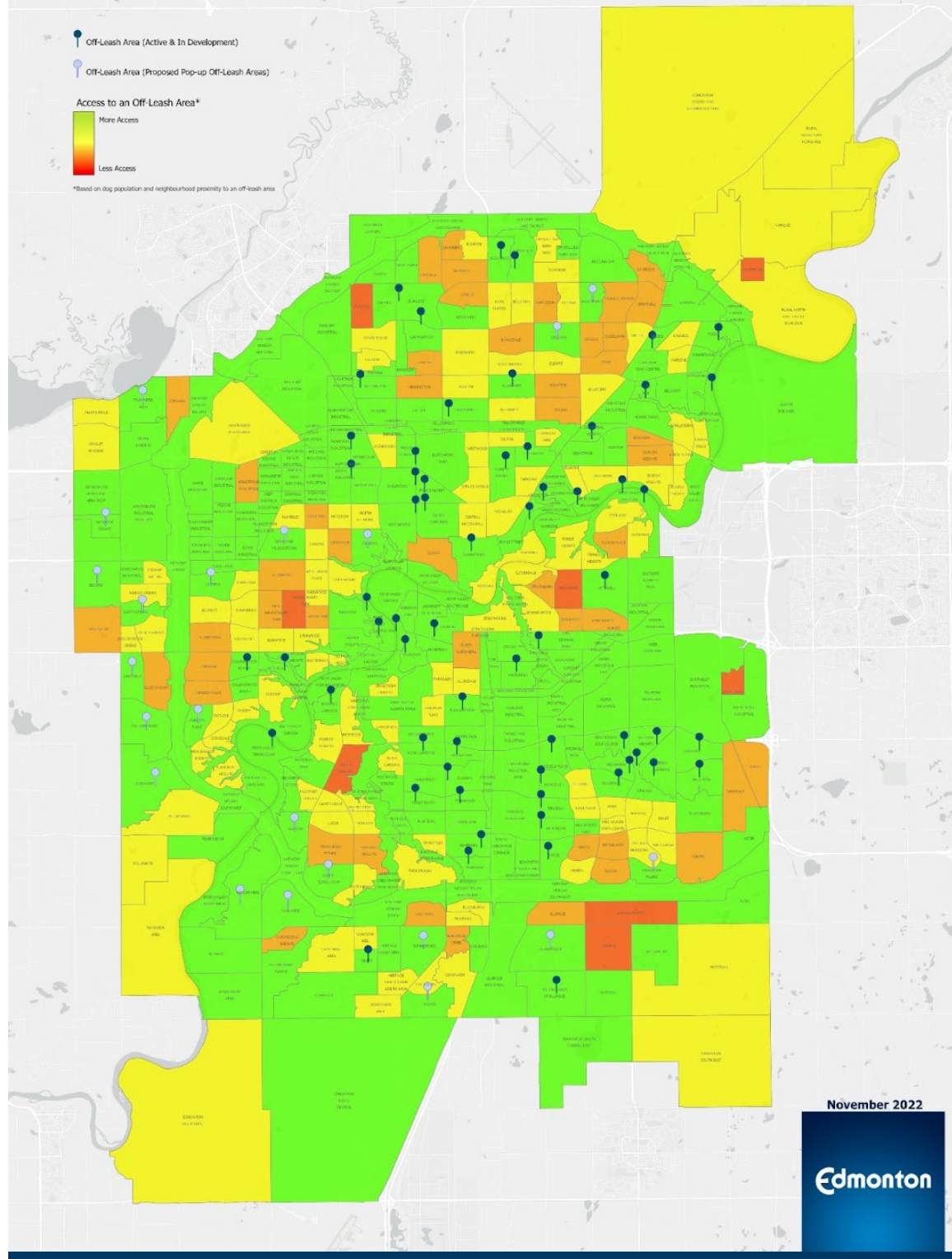


City of Edmonton

Dog Off-Leash Area Access

With Proposed Pop-up Dog Park Neighbourhoods



List of Proposed Neighbourhoods

- Trumpeter* or Starling or Hawks Ridge
- Westview Village
- Secord* or Rosenthal
- Suder Greens* or Webber Greens
- Granville* or Breckenridge Greens
- The Hamptons* or Glastonbury
- Edgemont
- Jamieson Place
- La Perle
- Britannia Youngstown* or Glenwood
- Glenora
- Windermere
- South Terwillegar
- Haddow* or Terwillegar Towne
- Ambleside* or Glenridding Heights
- Allard
- Rutherford
- Summerside* or Walker
- Crawford Plains
- Matt Berry* or Hollick Kenyon
- Kilkenny

**Note: Where multiple neighbourhood options are mentioned, a pin was placed on the map in one the first neighbourhood listed. Actual placement of up to 30 locations may occur in any of the neighbourhoods listed, depending on availability and assessment of suitable land.*