



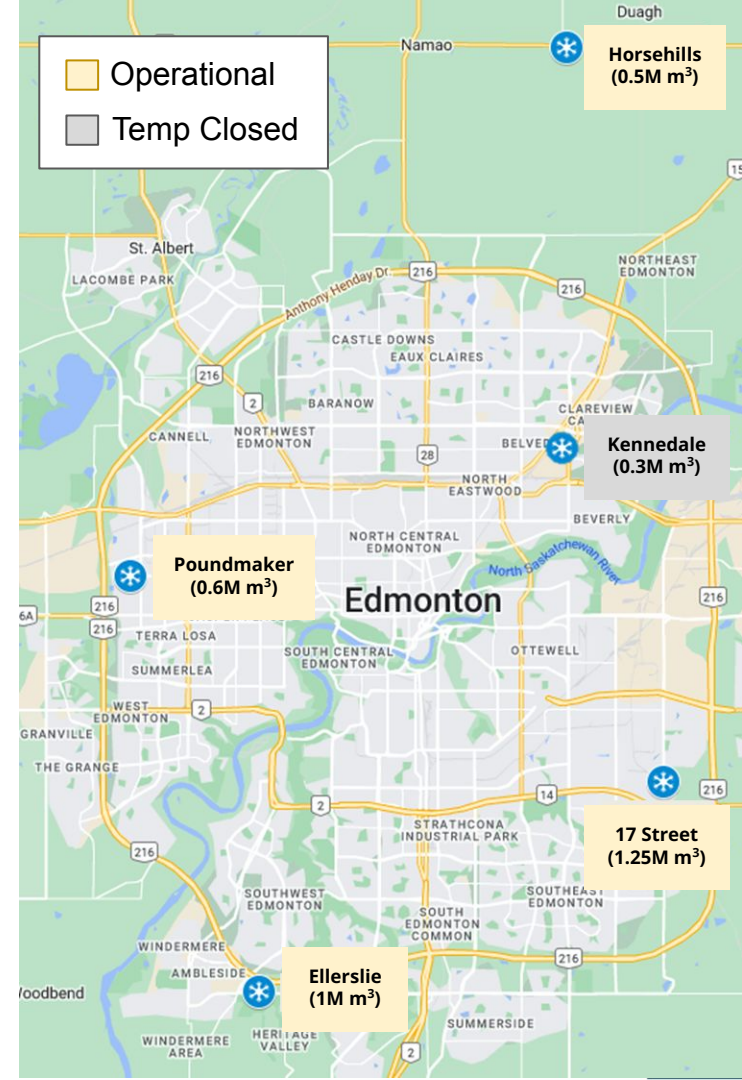
Parks and Roads Services

**Flood Mitigation Storage Areas as
Snow Dumps - C001253**

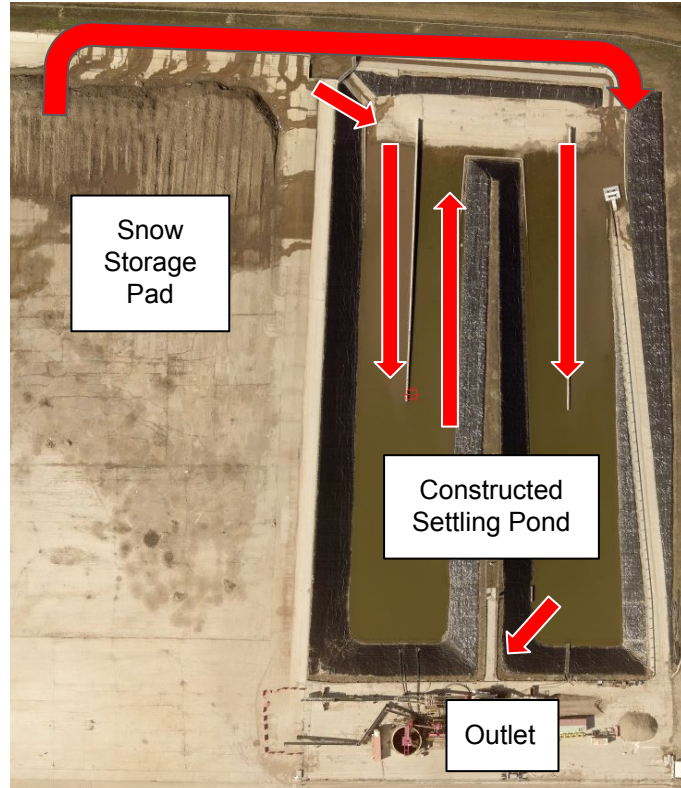
February 7, 2023
Community and Public Services Committee

City Maintained Snow Storage Sites

- 3.35M cubic metres of snow storage capacity
- Located away from residential areas



Snow Storage Site Structural Features



- Hard paved surfaces for snow storage (low permeability)
- Space and sun exposure for complete snow melting
- Sufficient drainage to control meltwater discharge
- Constructed settling ponds to reduce suspended sediment in meltwater

Flood Mitigation Areas (Stormwater Management Facilities)



Constructed wetland
Crystallina Nera

Designed to capture and store rainfall runoff following weather events, as well as meltwater from local snow.

- **Regional** - Wet and dry ponds, constructed wetlands
- **Local** - Low impact developments, storage tanks and oversized pipes

Flood Mitigation Areas as Snow Dumps



Low Impact Development (LID)
Rideau Park, 43 Avenue - 109 Street

Flood mitigation areas are not designed for snow storage and meltwater management, including:

- Snow quantity and quality
- Regulatory requirements
- Environmental, health and safety factors

Summary

1. Any site used for snow disposal must meet certain design, environmental and regulatory criteria.
2. Edmonton's current snow storage sites have sufficient capacity. Administration is focused on completing high-priority upgrades to ensure long-term use and environmental compliance.