



Parks and Road Services

**CO01284rev Community-Initiated  
Proposals for Off-leash Dog Parks**

January 16, 2023  
Community and Public Services Committee

# Introduction



## Current Off-Leash Establishment Processes

**City-led Capital Projects:** City-funded projects that are designed, build, maintained and operated by the City

**Developer Projects:** Built by developers as part of new neighbourhoods, then maintained and operated by the City

**Temporary Off-Leash Pilot Program:** Fully enclosed amenities on league licensed-land (winter ice rinks, tennis and basketball courts)



## New Methods for Off-Leash Area Establishment

**Community Group Led Construction:** well established method for community groups to fund, construct and operate infrastructure within licenced areas

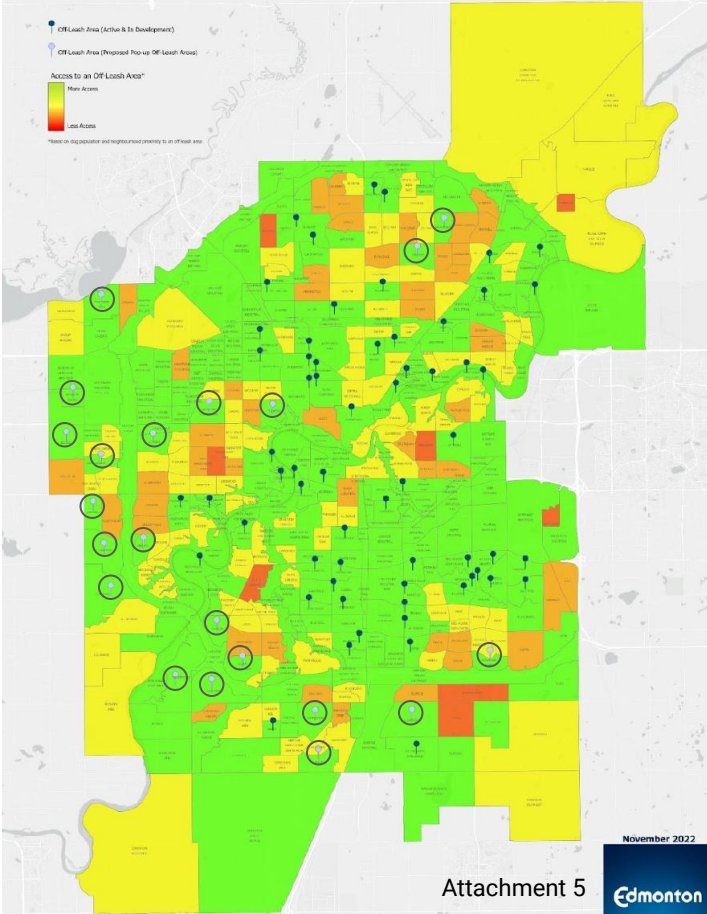
**Pop-up Dog Park Program:** new program to quickly establish temporary OLAs within high need neighbourhoods and use these sites to engage with residents prior to developing permanent OLAs



# City of Edmonton

## Dog Off-Leash Area Access

### With Proposed Pop-up Dog Park Neighbourhoods

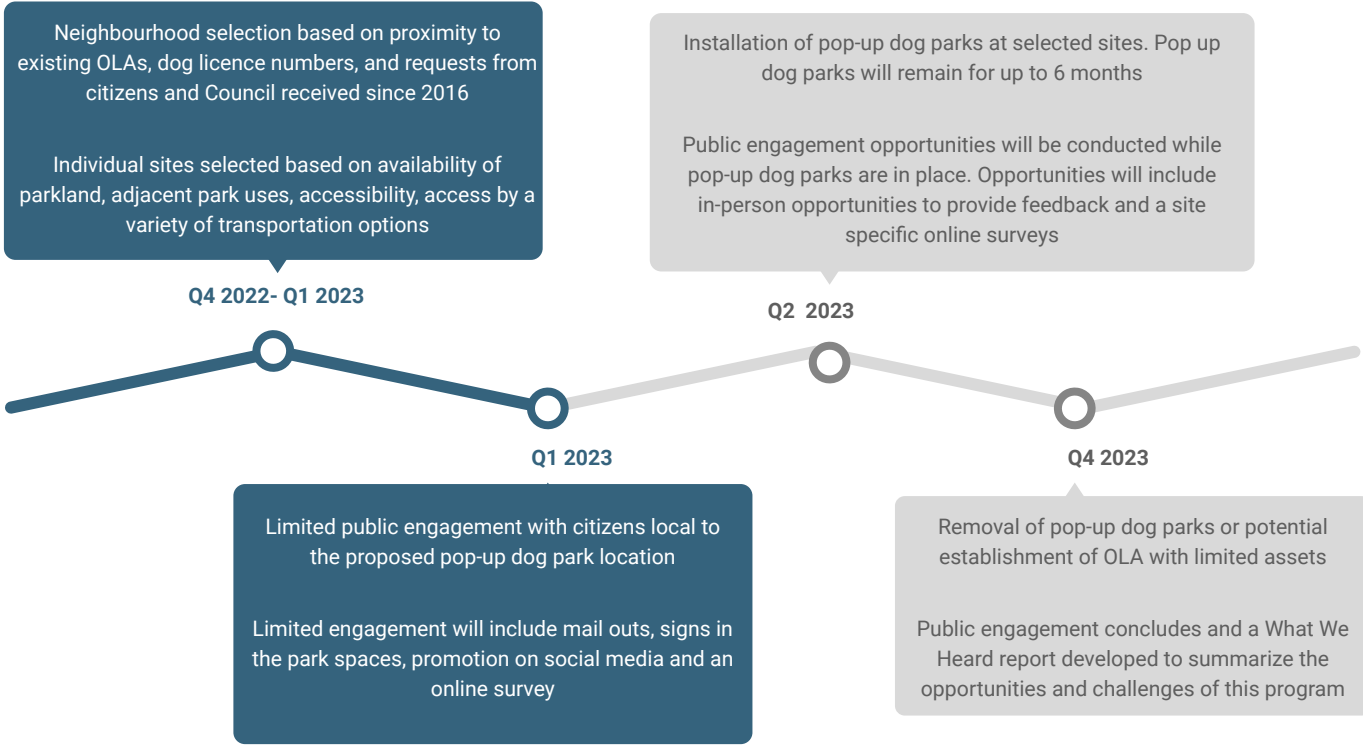


November 2022

Attachment 5



# Pop Up Dog Park Program



## Next Steps

- Continue with city-led capital and developer-led projects
- Evaluation of the Temporary Off-leash Pilot Program
- Integration of OLAs into Community Group Led Construction processes
- Launch of the Pop-up Dog Park program



---

# Thank you. Questions?

Parks and Road Services  
[edmonton.ca](http://edmonton.ca)

The logo for the City of Edmonton, featuring the word "Edmonton" in white text on a dark blue square background.



# City of Edmonton

## Dog Off-Leash Area Access

