

Bylaw 17947

Closure of Vehicular Access to a titled parcel located at 11845-102 Avenue NW, from
102 Avenue NW

WHEREAS the Municipal Council of the City of Edmonton may pass a Bylaw pursuant to Section 28 of the *Highways Development and Protection Act*, S.A. 2004, c. H-8.5 for the purpose of removing any direct physical means of access between a controlled street and land adjacent to the controlled street; and

WHEREAS City Council has considered the proposed closing and has agreed that it is in the public interest to pass this Bylaw;

NOW THEREFORE the Municipal Council of the City of Edmonton, duly assembled, enacts as follows:

1. All means of access to or from a controlled street generally as shown on Schedule "A" is hereby closed.

READ a first time this 9th day of May 2017;

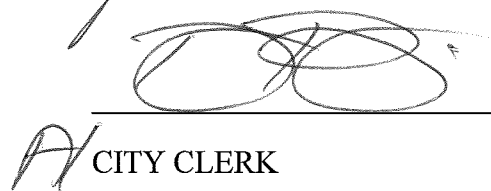
READ a second time this 9th day of May 2017;

READ a third time this 9th day of May 2017;

SIGNED AND PASSED this 9th day of May 2017.

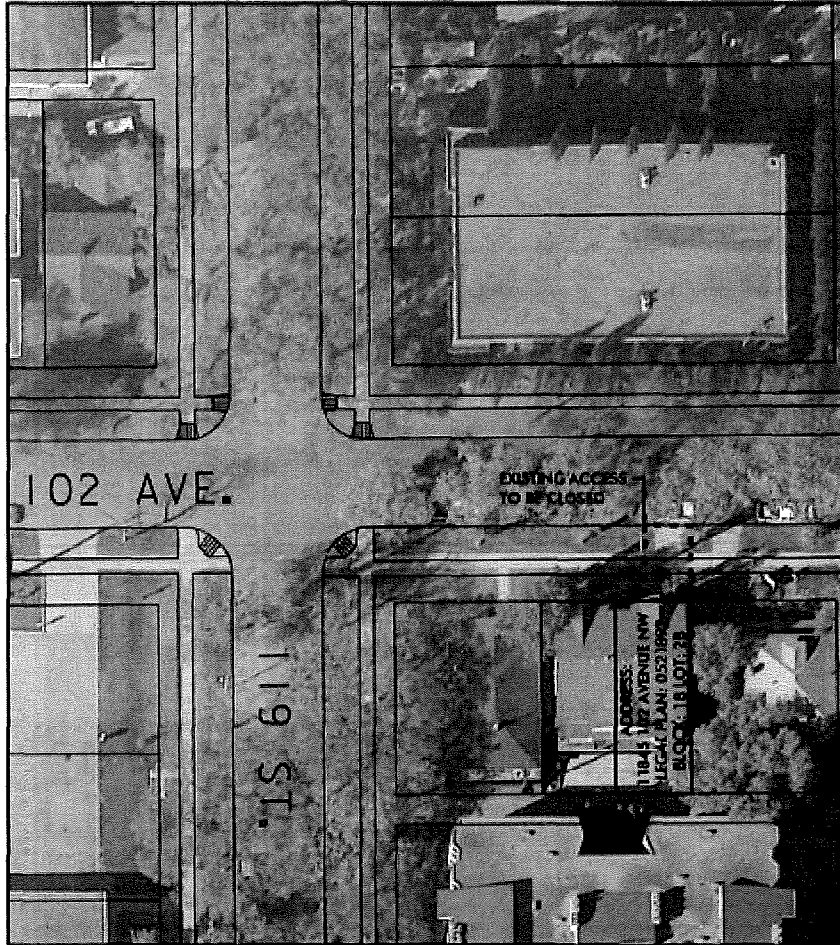
THE CITY OF EDMONTON



MAYOR

CITY CLERK

SCHEDULE "A"



Edmonton SUSTAINABLE DEVELOPMENT
CITY PLANNING

102 AVENUE BIKE ROUTE
11845 - 102 AVENUE NW

DRAWN: CY

ACCESS CLOSURE (BYLAW 17947)

NTS

DATE: MARCH 10, 2017