

Bylaw 17923

Access closure to a titled parcel at 9652-108A Avenue NW on 97 Street Access 1

WHEREAS the Municipal Council of the City of Edmonton may pass a Bylaw pursuant to Section 28 of the *Highways Development and Protection Act*, S.A. 2004, c. H-8.5 for the purpose of removing any direct physical means of access between a controlled street and land adjacent to the controlled street; and

WHEREAS City Council has considered the proposed closing and has agreed that it is in the public interest to pass this Bylaw;

NOW THEREFORE the Municipal Council of the City of Edmonton, duly assembled, enacts as follows:

1. All means of access to or from a controlled street generally as shown on Schedule "A" is hereby closed.

READ a first time this 9th day of May 2017;

READ a second time this 9th day of May 2017;

READ a third time this 9th day of May 2017;

SIGNED AND PASSED this 9th day of May 2017.

THE CITY OF EDMONTON

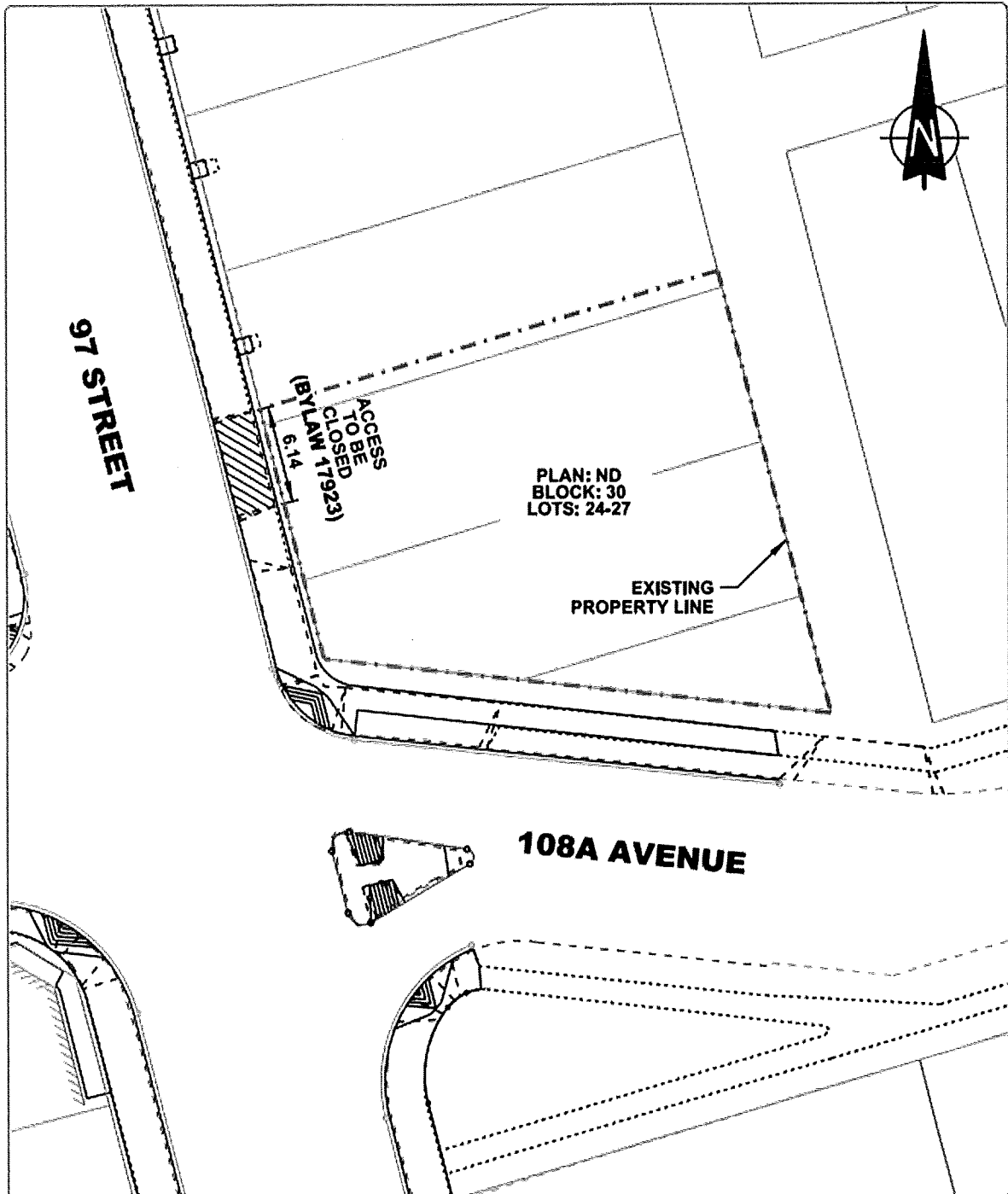


MAYOR



CITY CLERK

SCHEDULE "A"



1					
2					
3					
4					
5					
6					
7					
8					
9					
10					
11					
12					
13					
14					
15					
16					
17					
18					
19					
20					
21					
22					
23					
24					
25					
26					
27					
28					
29					
30					
31					
32					
33					
34					
35					
36					
37					
38					
39					
40					
41					
42					
43					
44					
45					
46					
47					
48					
49					
50					
51					
52					
53					
54					
55					
56					
57					
58					
59					
60					
61					
62					
63					
64					
65					
66					
67					
68					
69					
70					
71					
72					
73					
74					
75					
76					
77					
78					
79					
80					
81					
82					
83					
84					
85					
86					
87					
88					
89					
90					
91					
92					
93					
94					
95					
96					
97					
98					
99					
100					

DESIGNED BY	DATE	REVIEWED BY	DATE
BY	1000-10-2017	WC	1000-10-2017
NOTED		SPECIFIED	DATE
			1000-10-2017



INTEGRATED INFRASTRUCTURE SERVICES
INFRASTRUCTURE PLANS & DESIGN DIVISION

PROJECT
97 STREET REHABILITATION
107A AVENUE TO 111 AVENUE

ISSUES
ACCESS CLOSURE (9652 108A AVE.)