



Parks and Road Services

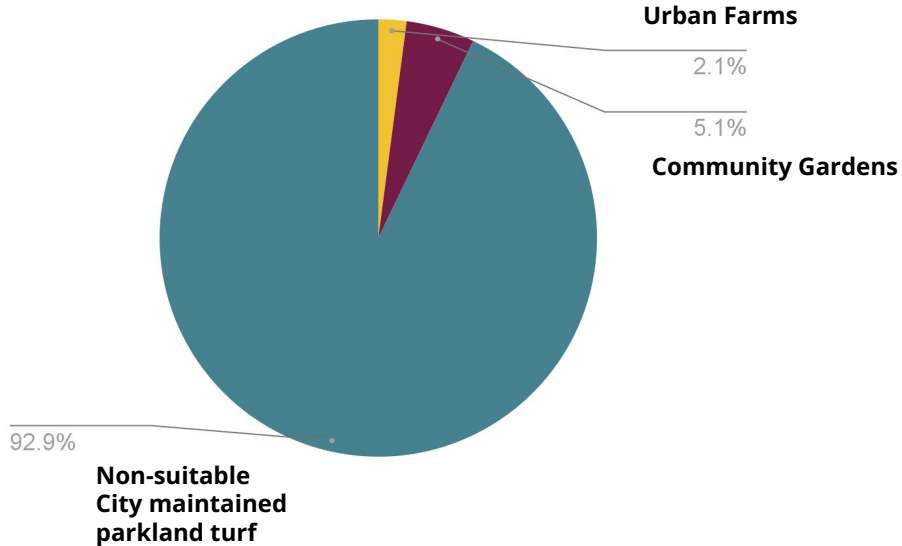
Urban Farms and Gardens
Potential Opportunities & Barriers

August 8, 2022
Community and Public Services Committee

Introduction



Turf Inventory Scan Results



Exclusions:

- Private property
- Protected River Valley or Natural Areas
- Sports fields
- Certain industrial or residential zoned areas
- School & Community Park (excluded for urban farms)
- Land with $\geq 30\%$ slope
- Within 5m of a pipeline, fence or tree trunk



Northlands Urban Farm



Fulton Place Sunshine Community Garden

GIS Scan Results

Legend

Tier1 Urban Farm Sites



Tier1 Community Garden Sites



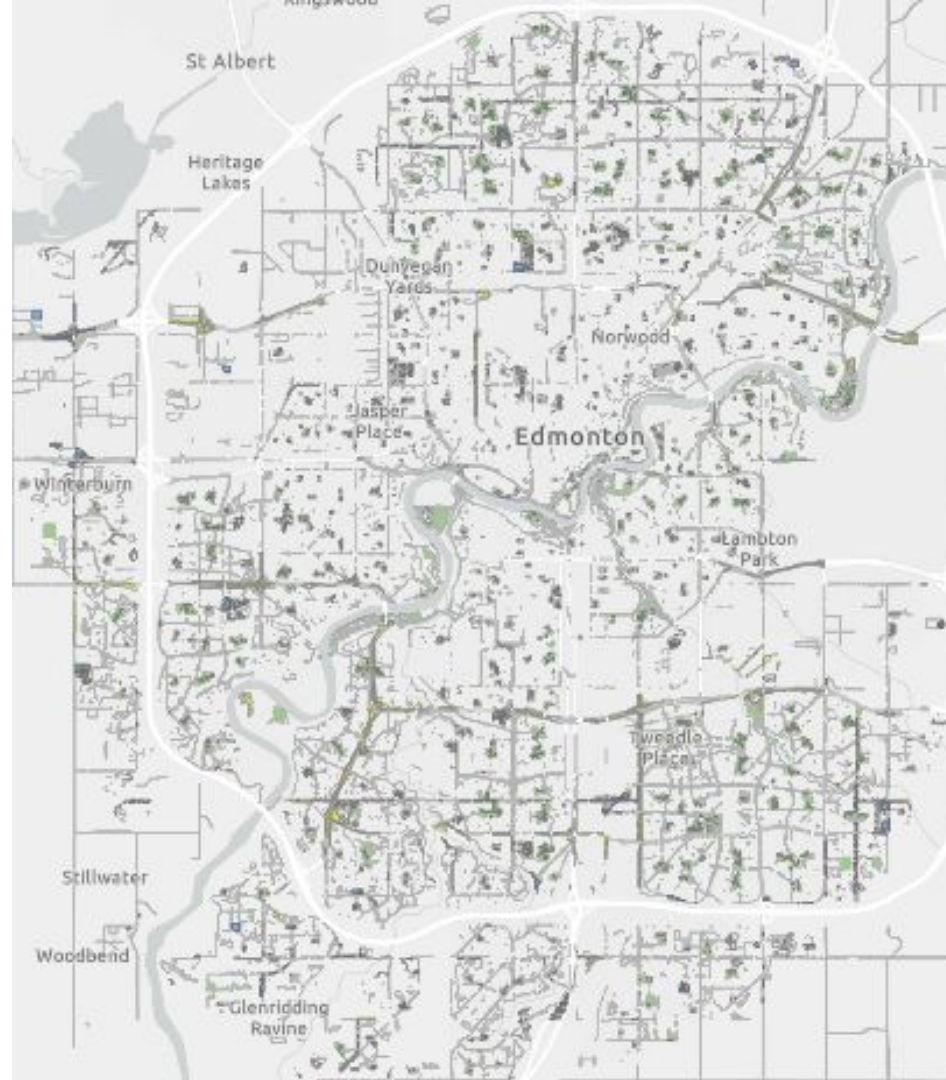
Sports Field



CoE Maintained Unmowed Grass Area



CoE Maintained Turf



GIS Scan Results

Legend

Tier1 Urban Farm Sites



Tier1 Community Garden Sites



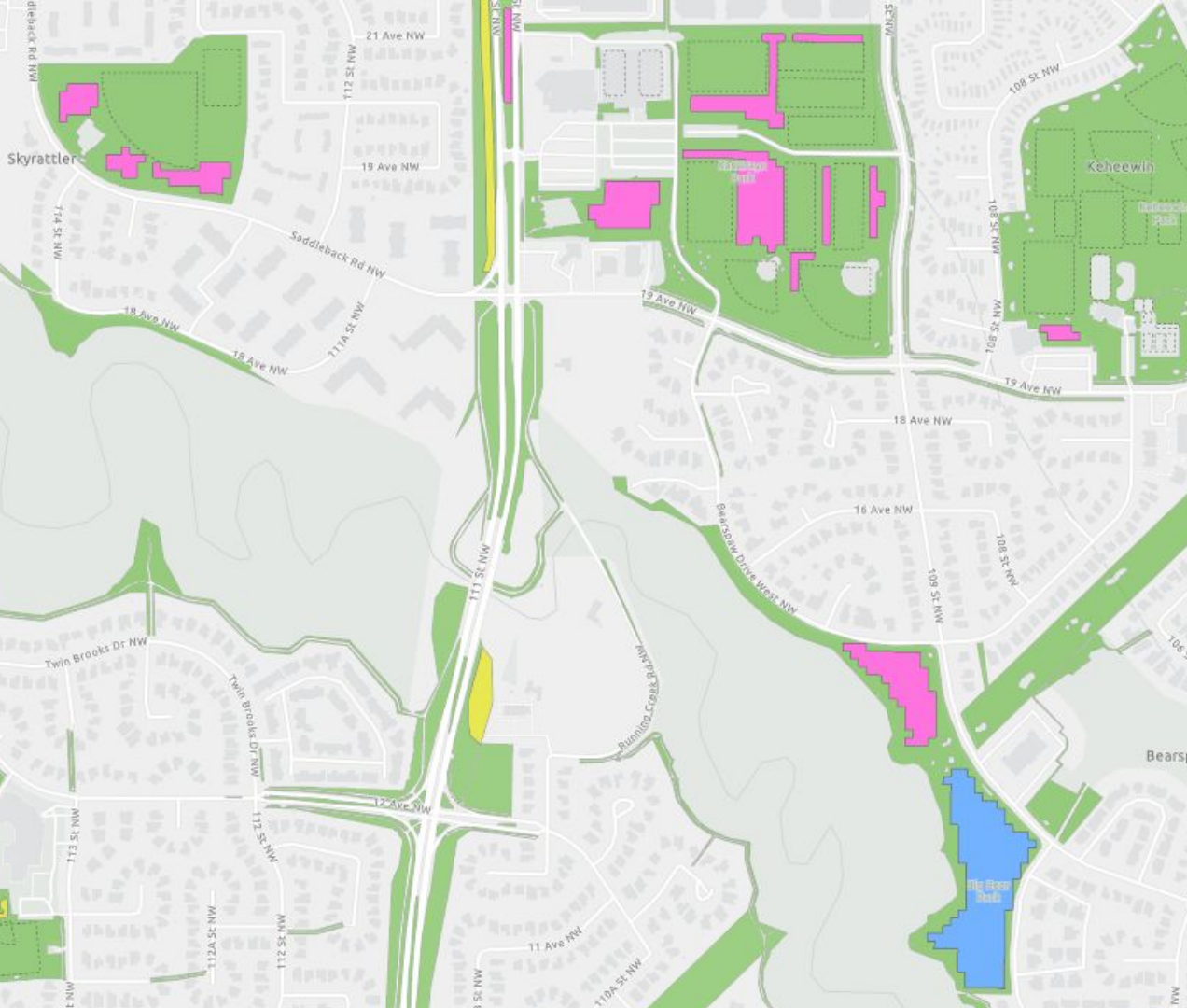
Sports Field



CoE Maintained Unmowed Grass Area



CoE Maintained Turf



Existing Initiatives and Programs

- Bylaw**
- Current Zoning Bylaw Renewal Initiative
 - 2016 Zoning Bylaw changes

- Programs**
- Community Gardens Program
 - Pop-up Community Gardens Pilot (2020-present)
 - Front Yards in Bloom
 - Boulevard Gardening Program
 - City Farm (at Old Man Creek Nursery)
 - Veg Instead!
 - Urban Hens
 - Urban Beekeeping

Opportunities

Community Gardens

- Hands-on education
- Help organizations and agencies support their mandates
- Empower people to grow own food
- Increase accessibility of gardening to residents who do not otherwise have access to gardening space



Potential Opportunities

Urban Farms

- Boost the local economy
- Reduce turf maintenance
- Grow year-round indoors
- Development of new farming technology suited for urban environment



Potential Barriers

Urban Farms

- Smaller land base available compared to rural farming
- Pockets of land throughout the City versus continuous section of land
- More operating constraints:
- Unknown or limited business models
- Limited budget and corporate resources



Next Steps

- **Community Gardens**
 - Program growth opportunities including Pop-up Community Gardens
- **Urban Farms**
 - Feasibility assessment
 - Public engagement
 - Program development

