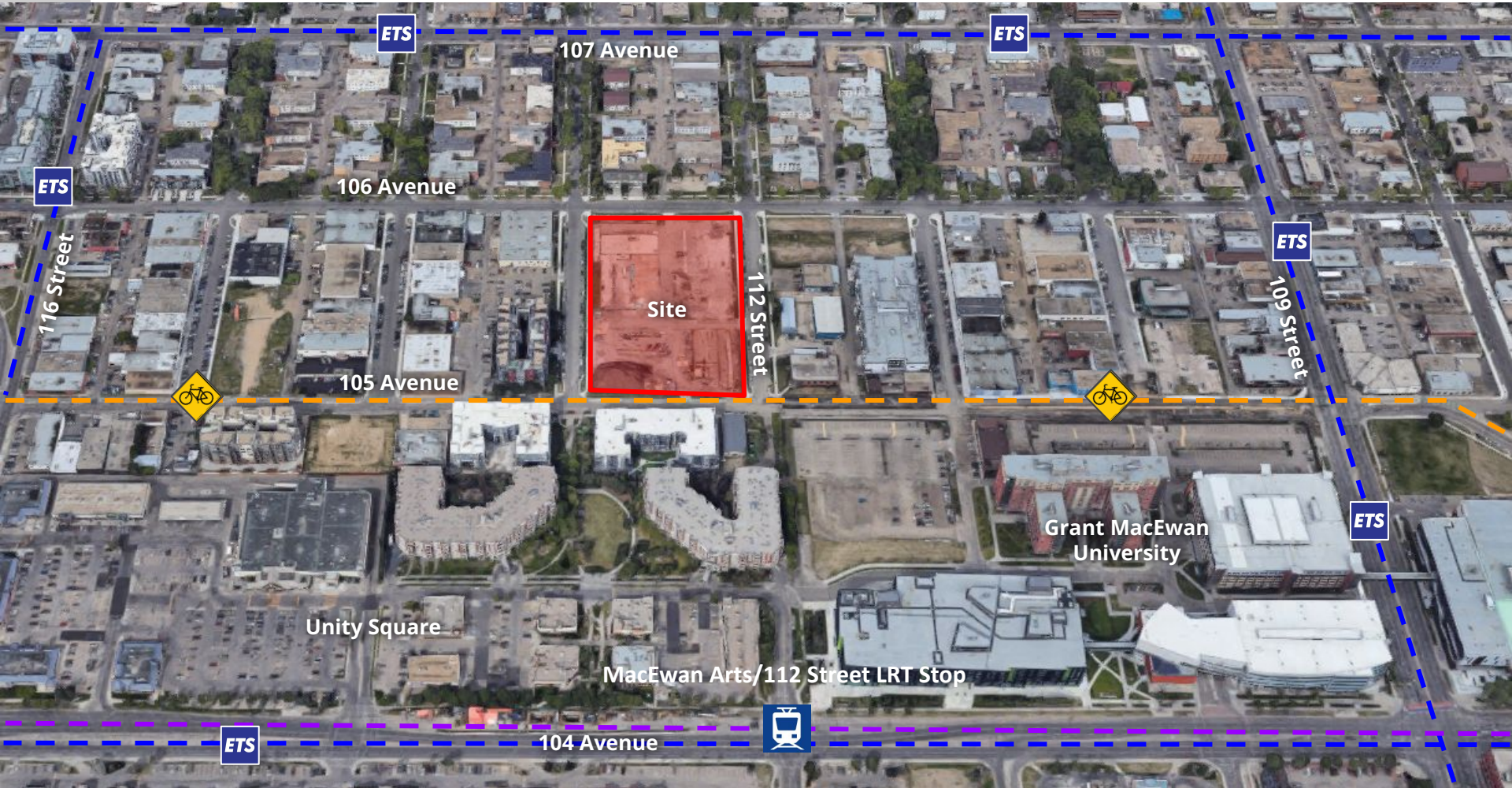


ITEMS 3.10 & 3.11  
BYLAW 20432 & CHARTER BYLAW 20433  
QUEEN MARY PARK

DEVELOPMENT  
SERVICES  
APR 3, 2023





## Comments

- Parking, access and transportation impacts
- The one tower is too tall
- Utility infrastructure capacity
- Park size, design and planning process
- Project timing and future construction.



MAILED NOTICE  
Jul 6, 2022



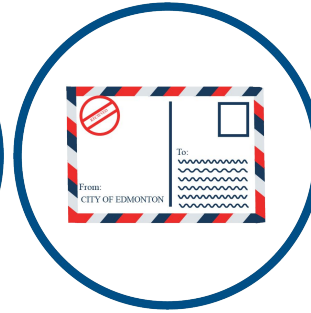
CITY WEBPAGE  
July 15, 2022



SITE SIGNAGE  
July 21, 2022



ONLINE  
ENGAGEMENT  
Aug 30, 2022



PUBLIC HEARING  
NOTICE  
Mar 9, 2023

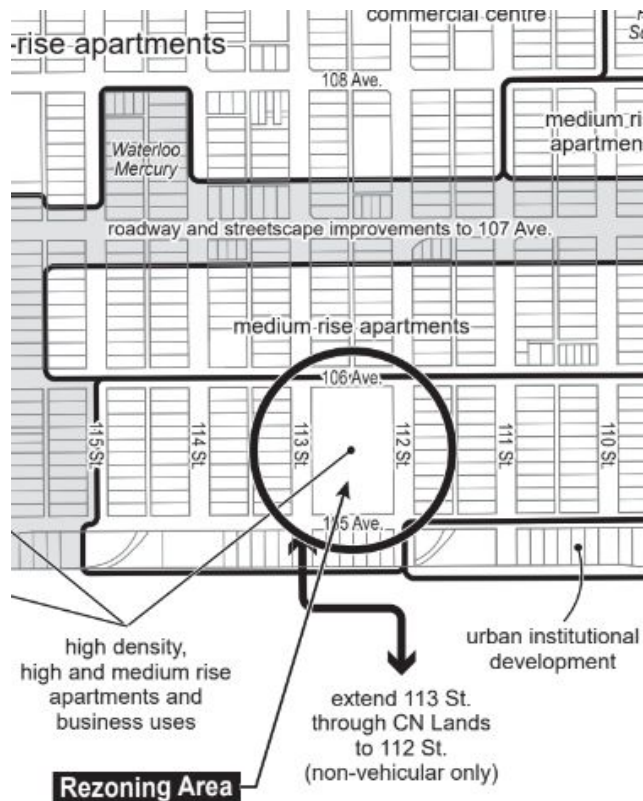


JOURNAL AD  
Mar 17, 2023  
Mar 25, 2023

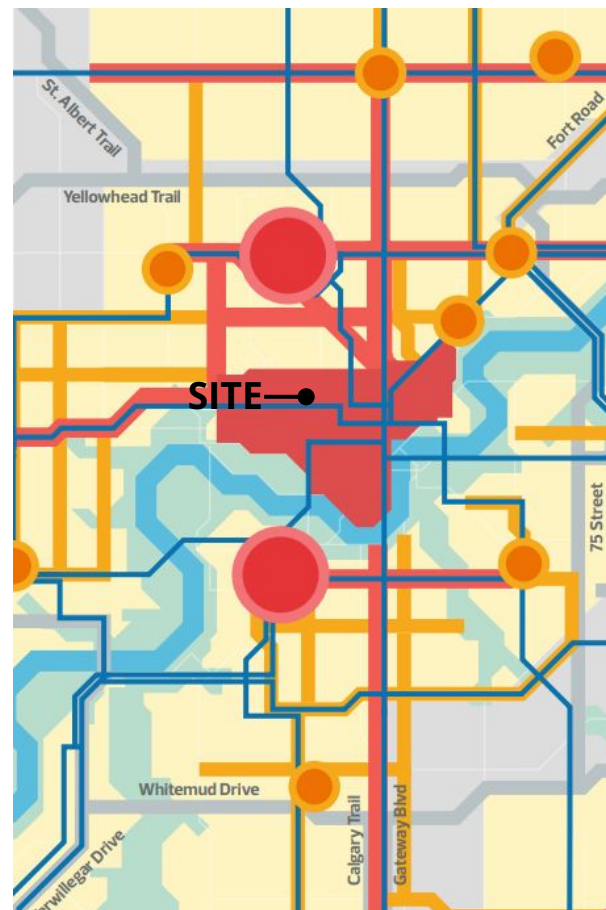




SITE VIEW



ARP MAP

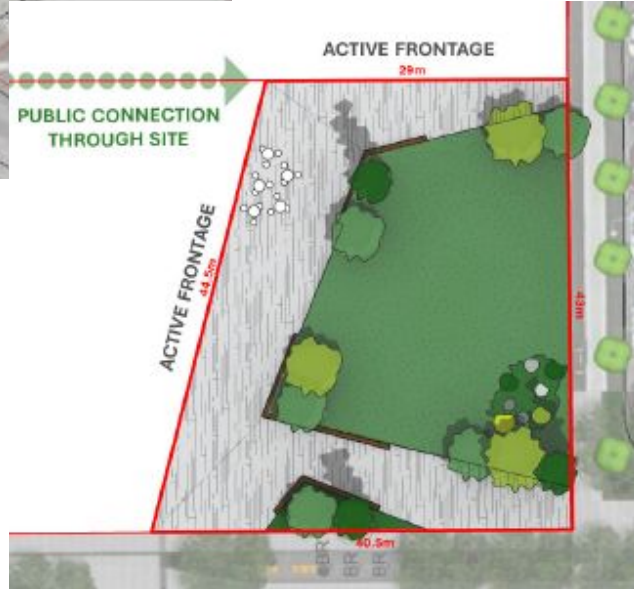


CITY PLAN



APPLICANT'S MASSING MODEL SHOWN TO EDMONTON DESIGN COMMITTEE

## 6 COMMUNITY CONTRIBUTIONS



### **Policy C599 Developer Sponsored Community Amenity Contributions:**

- Required contribution of \$548,572.05
- Proposed towards the development of the new public park next to this site.



