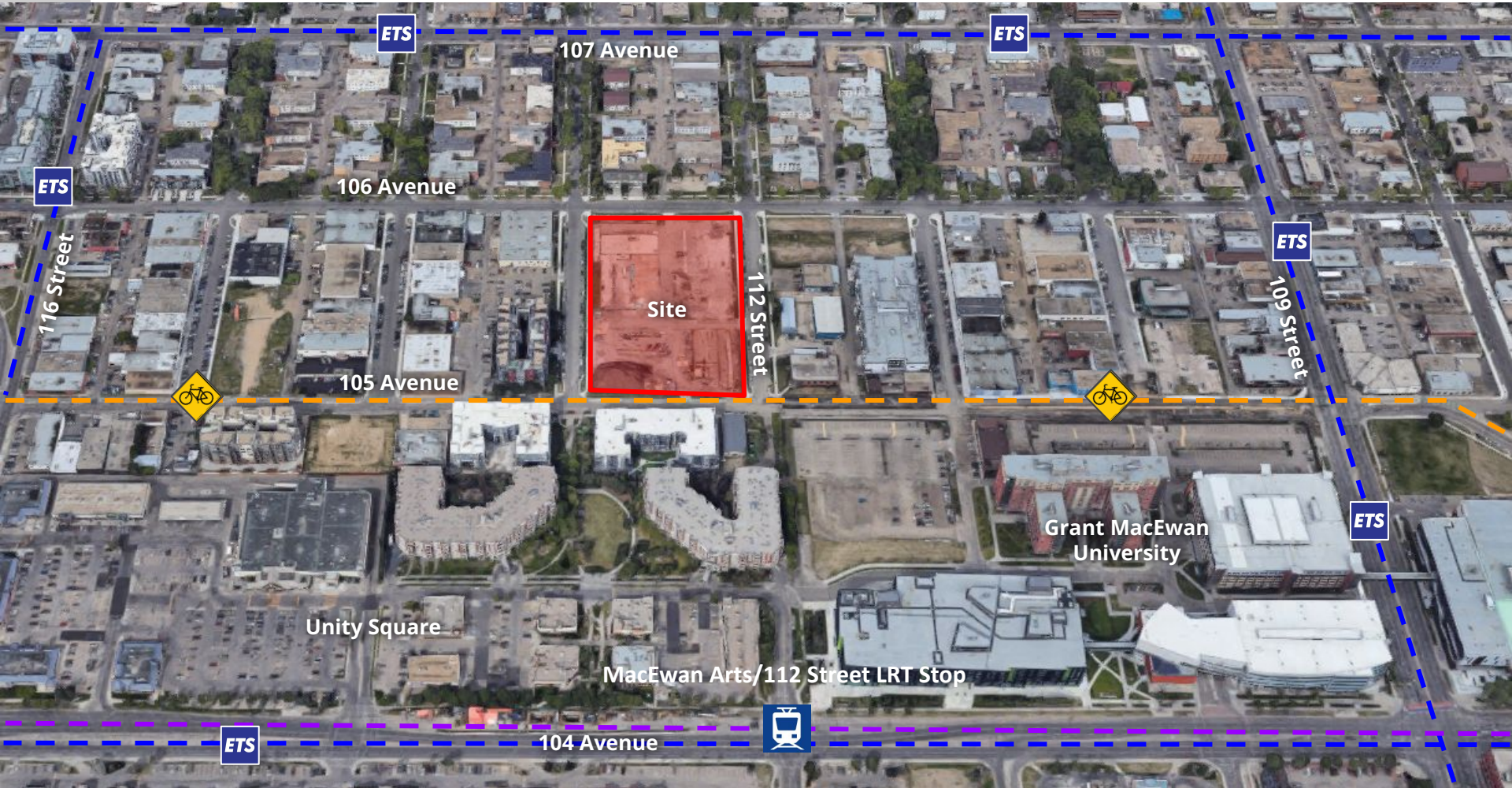


ITEMS 3.10 & 3.11
BYLAW 20432 & CHARTER BYLAW 20433
QUEEN MARY PARK

DEVELOPMENT
SERVICES
APR 3, 2023



Comments

- Parking, access and transportation impacts
- The one tower is too tall
- Utility infrastructure capacity
- Park size, design and planning process
- Project timing and future construction.



MAILED NOTICE
Jul 6, 2022



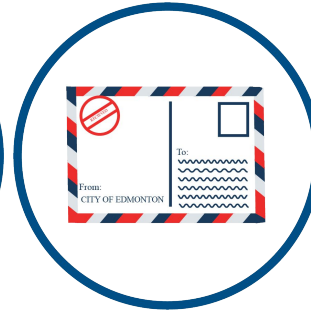
CITY WEBPAGE
July 15, 2022



SITE SIGNAGE
July 21, 2022



ONLINE
ENGAGEMENT
Aug 30, 2022



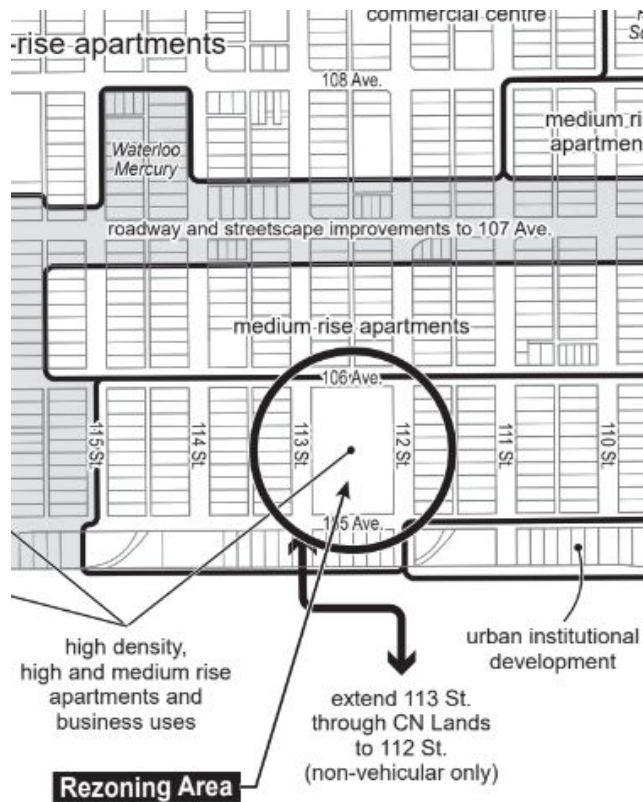
PUBLIC HEARING
NOTICE
Mar 9, 2023



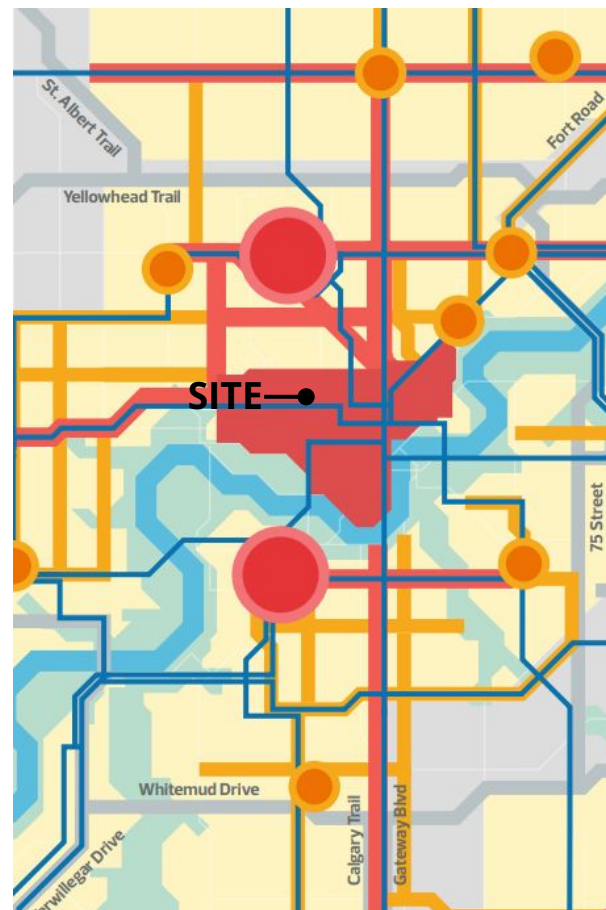
JOURNAL AD
Mar 17, 2023
Mar 25, 2023



SITE VIEW



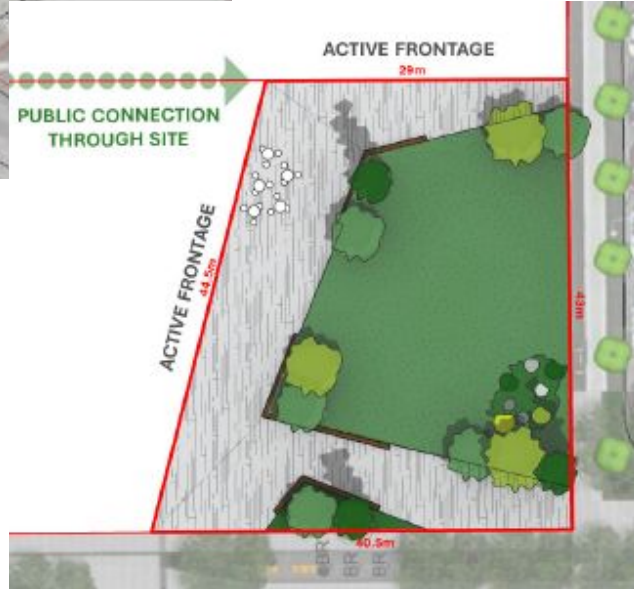
ARP MAP



CITY PLAN



APPLICANT'S MASSING MODEL SHOWN TO EDMONTON DESIGN COMMITTEE



Policy C599 Developer Sponsored Community Amenity Contributions:

- Required contribution of \$548,572.05
- Proposed towards the development of the new public park next to this site.

