

Bylaw 20427

Closure of Vehicular Access to Titled Parcel for Capital Line South Extension

WHEREAS the Municipal Council of the City of Edmonton may pass a Bylaw pursuant to Section 28 of the *Highways Development and Protection Act*, S.A. 2004, c. H-8.5 for the purpose of removing any access to a controlled street; and

WHEREAS City Council has considered the proposed closure and has agreed that it is in the public interest to pass this Bylaw;

NOW THEREFORE the Municipal Council of the City of Edmonton, duly assembled, enacts as follows:

1. All means of access to or from a controlled street generally as illustrated on the attached Schedule "A", is hereby closed.
2. This bylaw comes into force on January 1, 2025.

READ a first time this 25th day of April 2023;

READ a second time this 25th day of April 2023;

READ a third time this 25th day of April 2023;

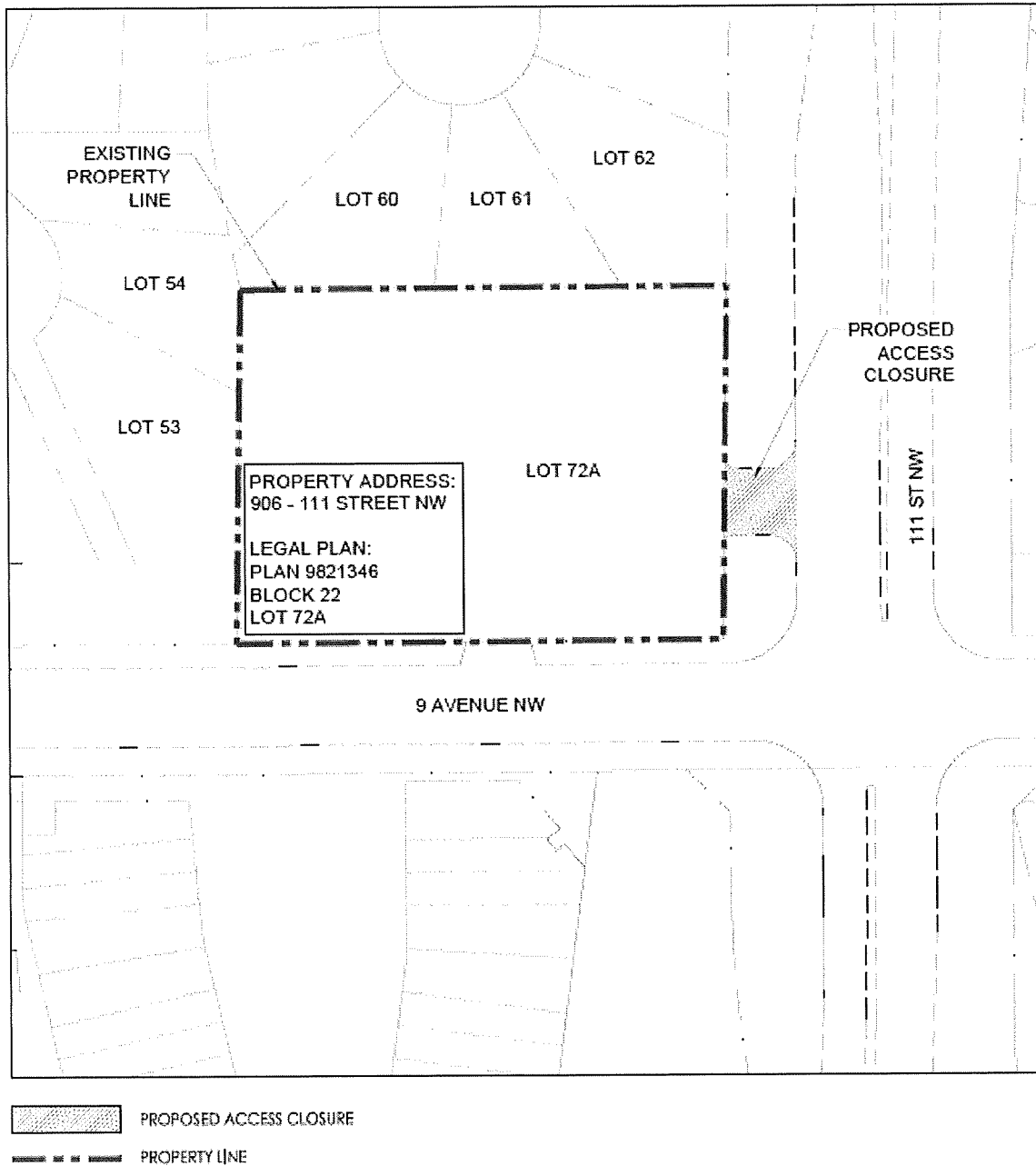
SIGNED AND PASSED this 25th day of April 2023.

THE CITY OF EDMONTON


MAYOR


CITY CLERK

SCHEDULE "A" TO BYLAW 20427



ACCESS CLOSURE
906 - 111 STREET NW

CAPITAL LINE SOUTH LRT EXTENSION

MAR 1 2023