

Community Services

Edmonton

Multi - Disciplinary and Outreach Ecosystem

Community and Public Services Committee

June 19, 2023

Types of Outreach

- **Proactive**
 - Basic Needs
 - Harm Reduction
 - Crisis Response
- **Targeted**
 - Case Management
- **Hybrid**
 - Balancing Proactive & Targeted



Categories of Outreach



SYSTEM RESPONSE

Teams that are part of a larger effort to address emergent issues, such as encampments or transit safety.

LOCATION BASED

Teams that focus on a certain geographic area.



HOUSING

Teams that focus on securing appropriate housing for people experiencing homelessness and/or supporting them to retain it.

HEALTH

Teams that support people struggling with mental health and/or substance use as well as overdose and harm reduction programs.

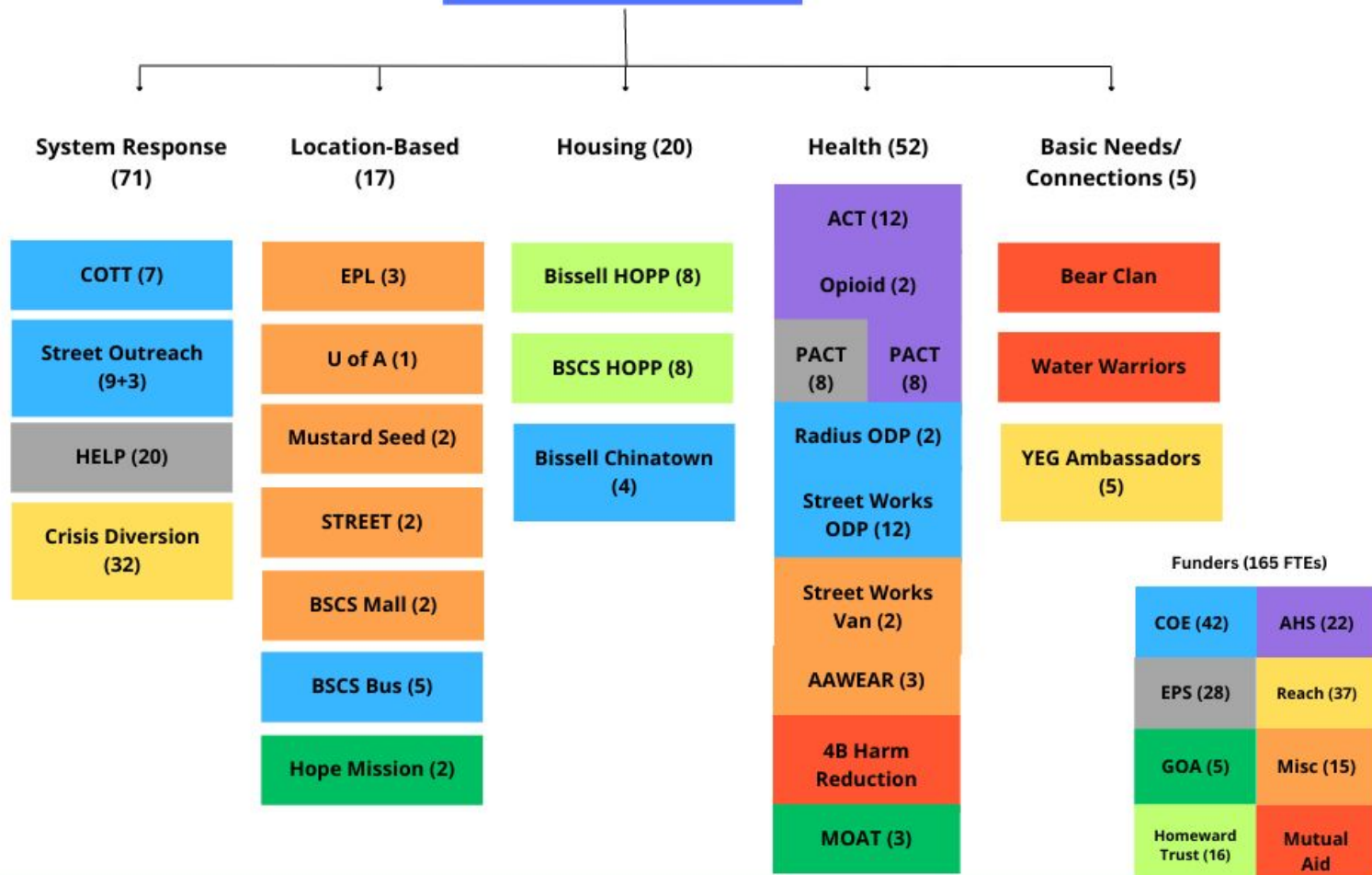


BASIC NEEDS/ CONNECTIONS

Teams that ensure people have access to core necessities as well as liaising with businesses.

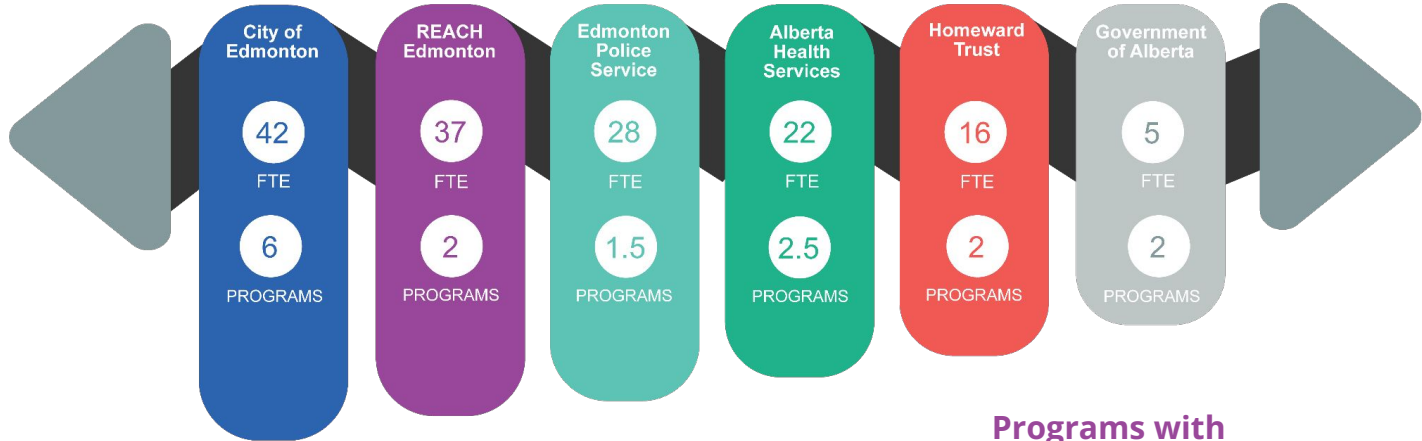


Programs (FTEs)

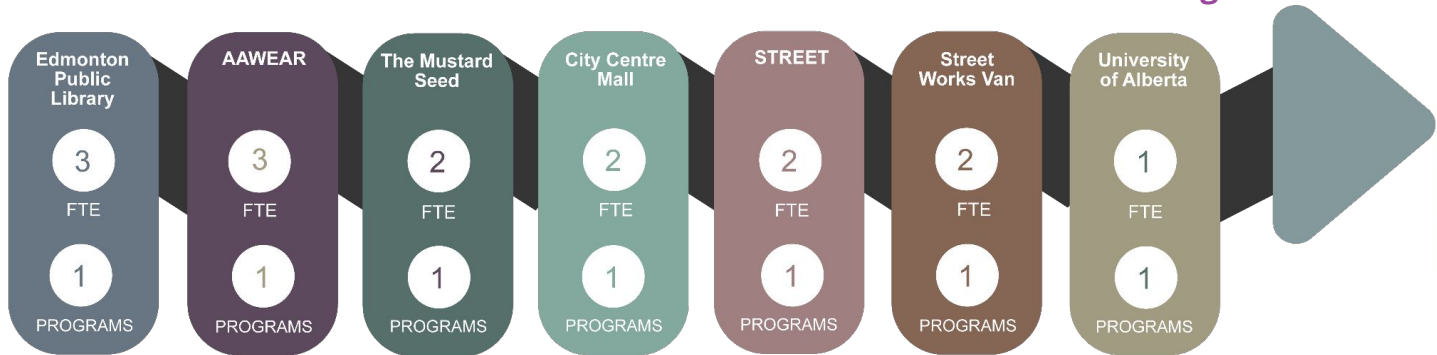


Funders of Outreach

Primary Funders



Programs with Other Funding



Geographic Coverage (FTEs)

City Wide (115)

COTT (7)
BSCS Street Outreach (9+3)
Crisis Diversion (32)
HELP (20)
Bissell HOPP (8)
BSCS HOPP (8)
ACT (12)
PACT (16)

Downtown (33)

Bissell Chinatown (4)	Hope Mission (2)
EPL (3)	AAWEAR (3)
BSCS Mall (2)	BSCS MOAT (3)
Street Works ODP (12)	Radius ODP (2)
Opioid Program (2)	<i>Bear Clan</i>
4B Harm Reduction	<i>Water Warriors</i>

Designated Route (14)

YEG Ambassadors (5)
Street Works Van (2)
STREET (2)
BSCS Bus (5)

Southside (3)

Mustard Seed (2)
U of A (1)

Type of Outreach

Proactive
Targeted
Hybrid

Challenges & Barriers

- Demand for Service
- Transiency
- Data Sharing
- Service Provision



Opportunities

- Outreach Database
- Outreach Hub
- Direct Pathways
- Geographical Division of Labour
- Healthy Streets Operation Centre
- Performance Measurement

Thank you. Questions?