

### Proposed Flood Barrier Maps

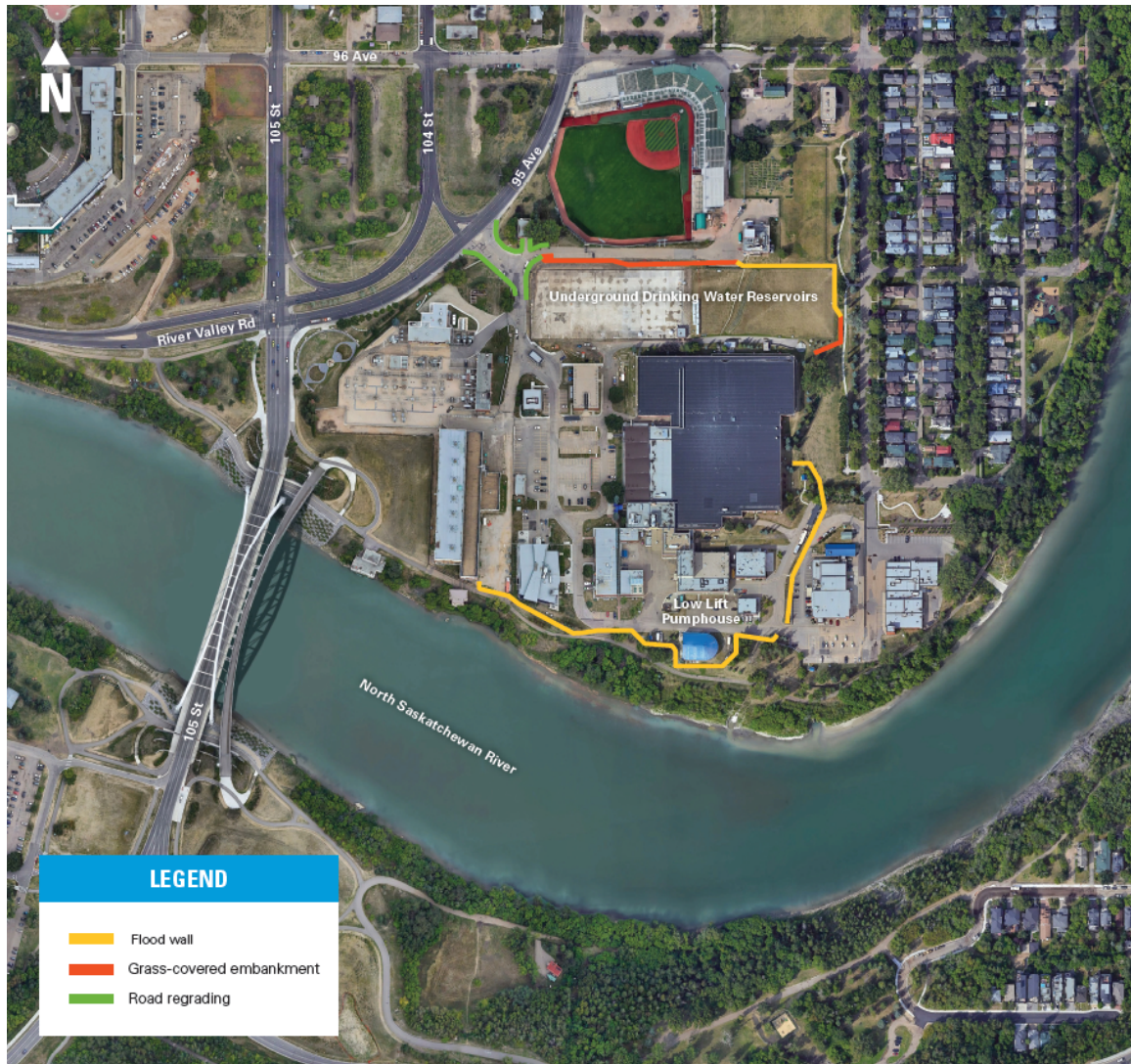
E. L. Smith Water Treatment Facility



*Proposed flood barriers at the E.L. Smith WTP.*

*Note, in general, these barriers are approx. 2 metres in height. Near the Low Lift Pump Houses, where the ground falls away, the barrier appears taller.*

Rossdale Water Treatment Facility



*Proposed flood barriers at the Rossdale WTP.*

*Note: In general, these barriers are 1 metre or less in height. Near the Low Lift Pump House where the ground falls away, the barrier appears taller, at about eye level.*