

Proposed Flood Barrier Maps

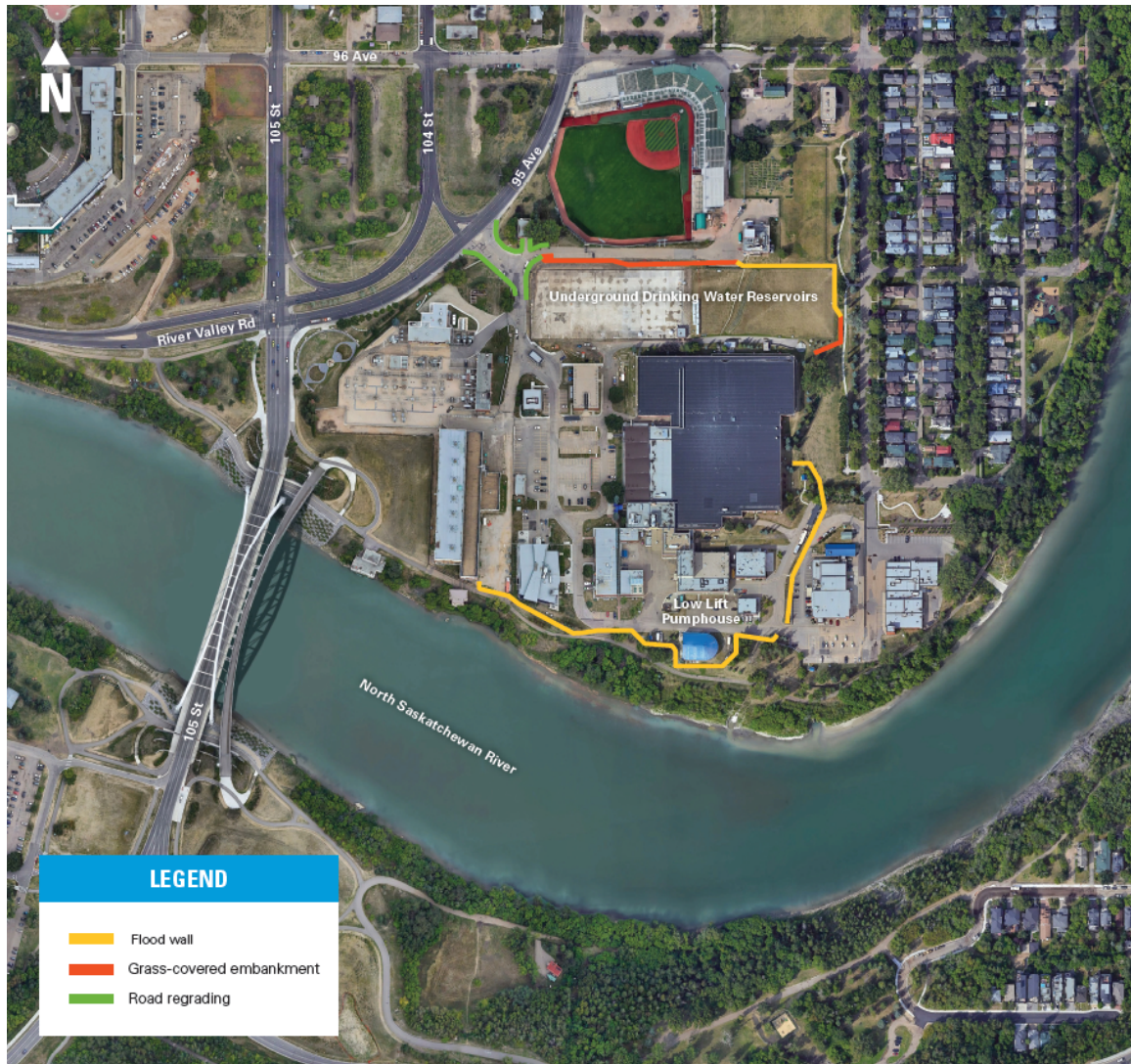
E. L. Smith Water Treatment Facility



Proposed flood barriers at the E.L. Smith WTP.

Note, in general, these barriers are approx. 2 metres in height. Near the Low Lift Pump Houses, where the ground falls away, the barrier appears taller.

Rossdale Water Treatment Facility



Proposed flood barriers at the Rossdale WTP.

Note: In general, these barriers are 1 metre or less in height. Near the Low Lift Pump House where the ground falls away, the barrier appears taller, at about eye level.