

Jasper Place Wellness Centre - 16026 100 Avenue NW (Glenwood) Development Overview

The affordable housing development is located at 16026 100 Avenue NW on a multi-family lot in Glenwood, which has 11.5 per cent non-market affordable housing as per the City's Non-Market Housing Inventory. The development was under construction at the time of application submission and is now completed.

The land is zoned Row Housing Zone (RF5), which permits the proposed development.

The facility operates on a 24/7 basis with dedicated staff members who provide support with a primary focus on eviction prevention and ensuring that individuals have access to the fundamental assistance required to sustain their housing stability and cultivate a life of personal fulfillment. These services encompass a broad spectrum of elements, including but not limited to the maintenance and sanitation of residential units, security measures, and orchestrating various social engagement initiatives.

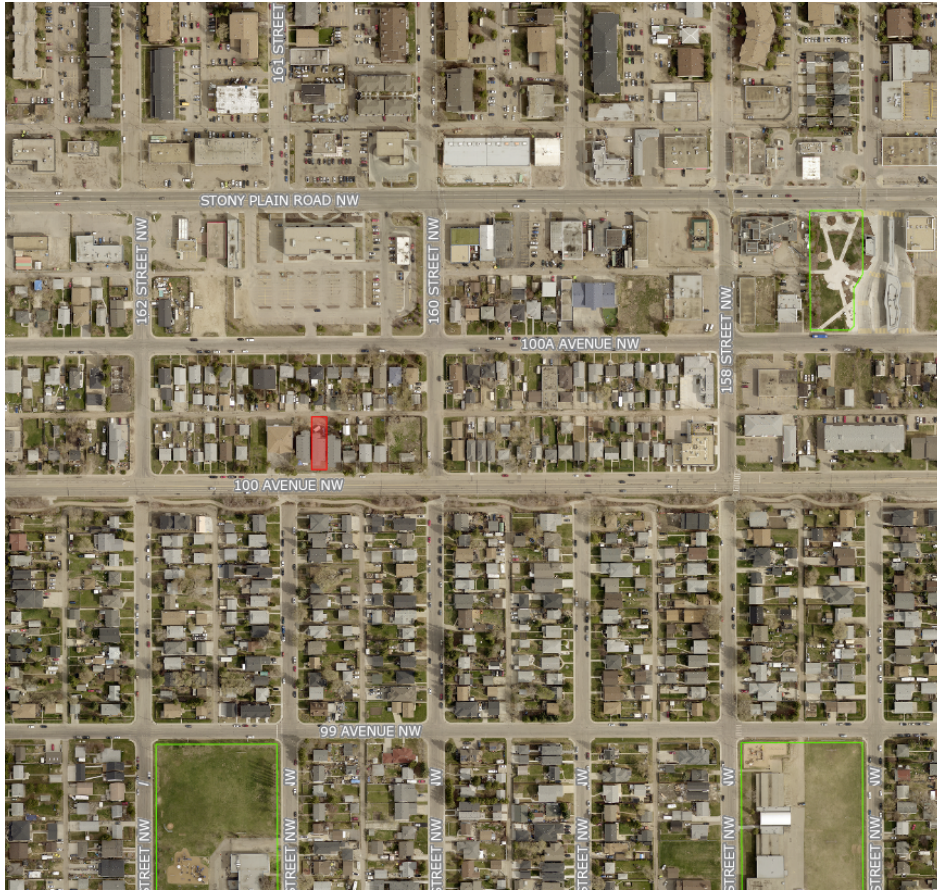
The support services extend to the facilitation of meaningful connections and the provision of referrals to critical resources. These resources include but are not limited to assistance with income tax services, aid in obtaining essential identification documents, access to primary healthcare services, adept management of medications through collaboration with local pharmacies, guidance and referrals to detoxification and treatment programs, and dedicated advocacy on behalf of individuals concerning income-related matters.

The development is situated within walking distance to daily needs, such as food services, pharmacies, and medical clinics. The Jasper Place Transit Centre is within a 10 minute walk from the development and the Jasper Place Stop of the future Valley Line West LRT will be a similar distance from the development as well.

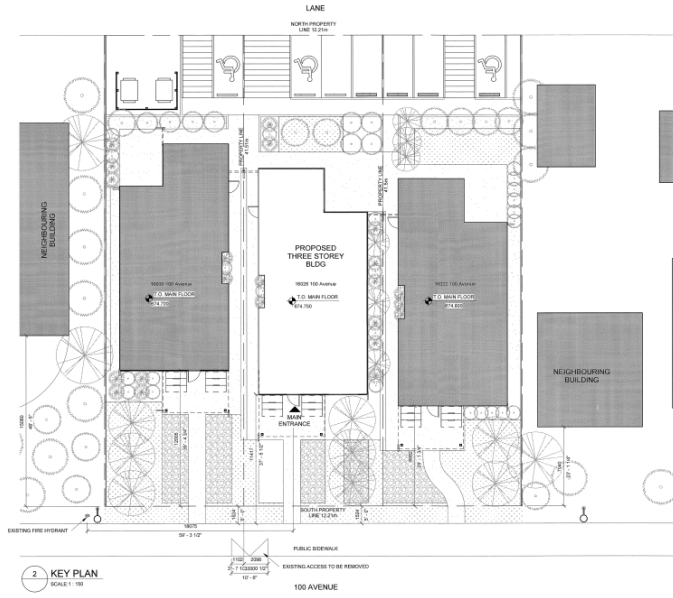
The development will target a 34 per cent decrease in operating energy consumption and greenhouse gas emissions relative to the 2017 National Energy Code for Buildings.

The development meets minimum accessibility requirements of the National Building Code 2019 Alberta Edition.

Location



Site Plan



Building Elevations

