

Edmonton

# Edmonton's Plan to Prevent and End Homelessness - Lessons Learned Council Report

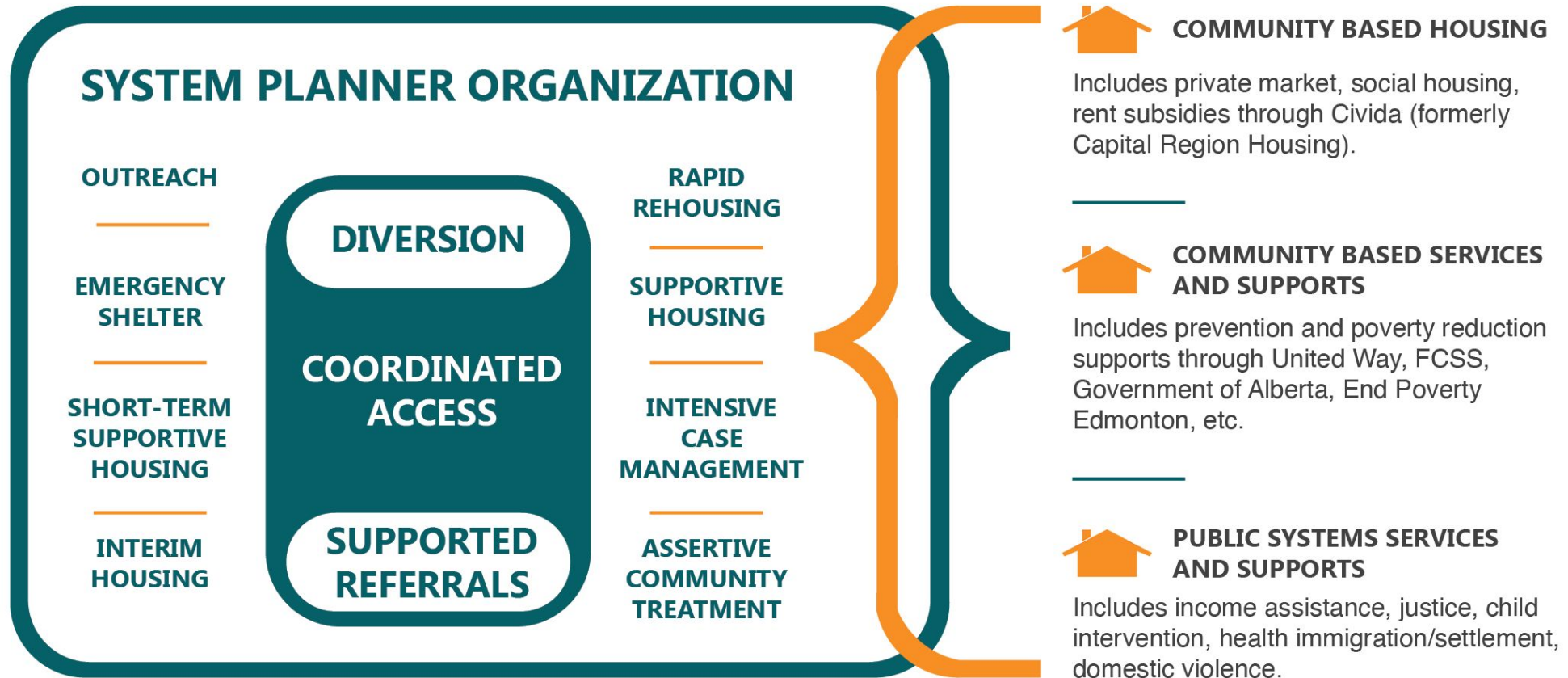
Community and Public Services Committee

October 30, 2023

# Land Acknowledgement

Homeward Trust respectfully acknowledges our place here on Treaty 6 Territory, the traditional and ancestral lands of many First Nation, Métis and Inuit people. We acknowledge the diverse Indigenous Peoples of this land which include the Cree, Blackfoot, Dene, Iroquois, Anishinaabe/Saulteaux /Ojibwa, Nakota Sioux, Inuit, Métis and many others whose footsteps have marked this land for time immemorial. Those whose stories, languages and culture continue to thrive today. We acknowledge ourselves as visitors living and working in this Territory.

# System Planning and Integration



# Background - 2023/2024 Community Investments

<ul style="list-style-type: none"> <li><span style="color: teal;">●</span> Shelters \$4.1M</li> <li><span style="color: brown;">●</span> <span style="color: teal;">●</span> <span style="color: orange;">●</span> Outreach, Triage, Assessment and Diversion: \$7.4M</li> <li><span style="color: teal;">●</span> Interim Housing: \$3.8M</li> </ul>	<b>Connections to Long-Term Solutions</b>
<ul style="list-style-type: none"> <li><span style="color: teal;">●</span> Rent Supplement/ Graduate Rental Assistance Initiative: \$4.7M</li> <li><span style="color: brown;">●</span> <span style="color: teal;">●</span> Prevention: \$1.9M</li> <li><span style="color: teal;">●</span> Discharge Planning and Coordination: \$0.4M</li> </ul>	<b>Homeless Prevention</b>
<ul style="list-style-type: none"> <li><span style="color: brown;">●</span> <span style="color: teal;">●</span> <span style="color: orange;">●</span> Scattered Site ICM: \$11.7M</li> <li><span style="color: teal;">●</span> Scattered Site ACT: \$3.0M</li> <li><span style="color: brown;">●</span> <span style="color: teal;">●</span> Rapid Re-Housing and Youth Housing First: \$3.7M</li> <li><span style="color: brown;">●</span> <span style="color: teal;">●</span> Congregate Supportive Housing 2 (8hr, Mixed Supports): \$1.5M</li> <li><span style="color: brown;">●</span> <span style="color: teal;">●</span> Congregate Supportive Housing 1(24/7, Complex Supports): \$13.8M</li> </ul>	<b>Housing Supports</b>
<ul style="list-style-type: none"> <li><span style="color: brown;">●</span> <span style="color: teal;">●</span> Supports to assist other activities: \$4.8M</li> <li><span style="color: brown;">●</span> Drop-In and Warming Centres: \$1.0M</li> </ul>	<b>Program Supports</b>

\$15.2M Federal Funding

\$45.5M Provincial Funding

\$1.1 Municipal Funding

# 2017 Plan Highlights

- The 2017 Plan was guided by community engagement and local data
- Collective goal to achieve “functional zero”
- Continued call for affordable and supportive housing
- Commitments to improve data collection and centralization of systems
- Accountability framework and system integration

A Place to Call Home  
EDMONTON'S UPDATED PLAN  
TO PREVENT AND END HOMELESSNESS



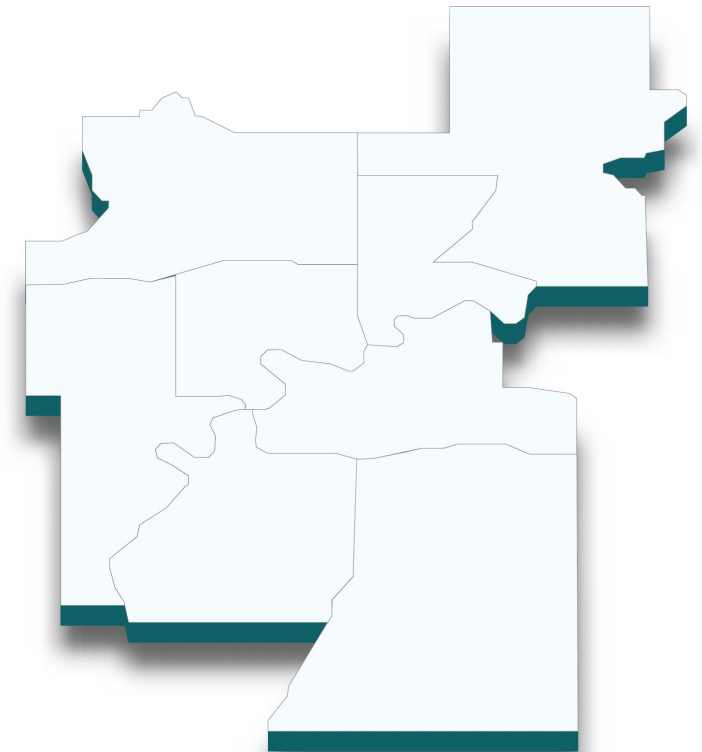
# 2017 Plan Progress

- 12,000 housing placements resulted in 8,500 unique individuals being successfully housed
- Expansions and enhancements of programs and teams to provide trauma-informed and person-centred care
- BNL and Coordinated Access
- 644 additional units of permanent supportive housing added



# What's changed since 2017?

- Long lasting pandemic impacts;
- Provincial and municipal population growth;
- Inflation and overall increased cost of living;
- Tightening vacancy rates and increased demand for low-end of market rental units by a growing number of low-income households;
- Increased demand for non-market affordable housing units that is outpacing new supply; and
- Social assistance benefits that do not adequately cover cost of living expenses.

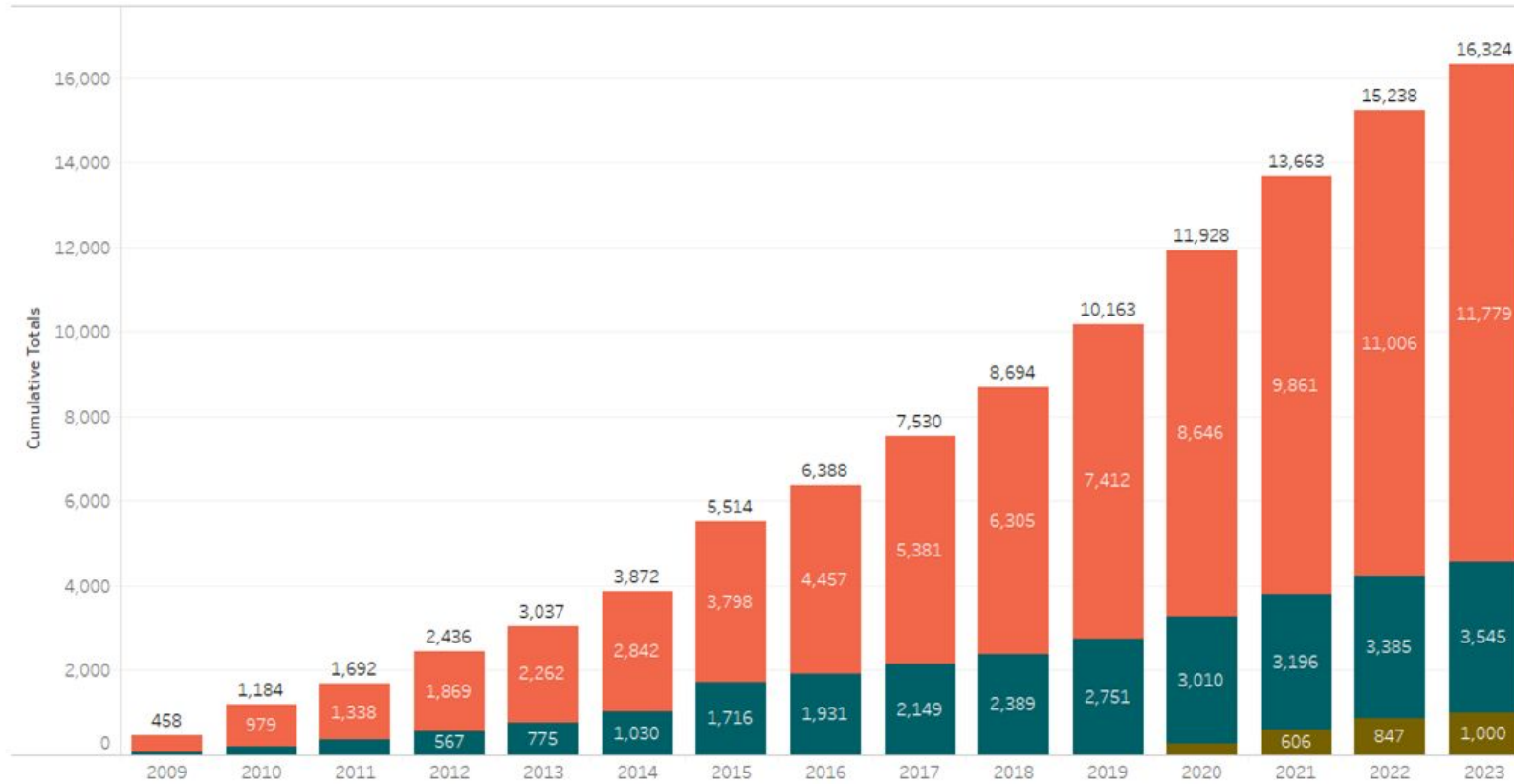


16,324 people were housed through Housing First and related programs since 2009.

Clients or Dependents or SR  
All

Year  
All

- Clients
- Dependents
- Supported Referrals





# Housing First: The Philosophy

## Housing First Principles



Immediate access to permanent housing with no housing readiness requirements.



Consumer choice and self-determination.



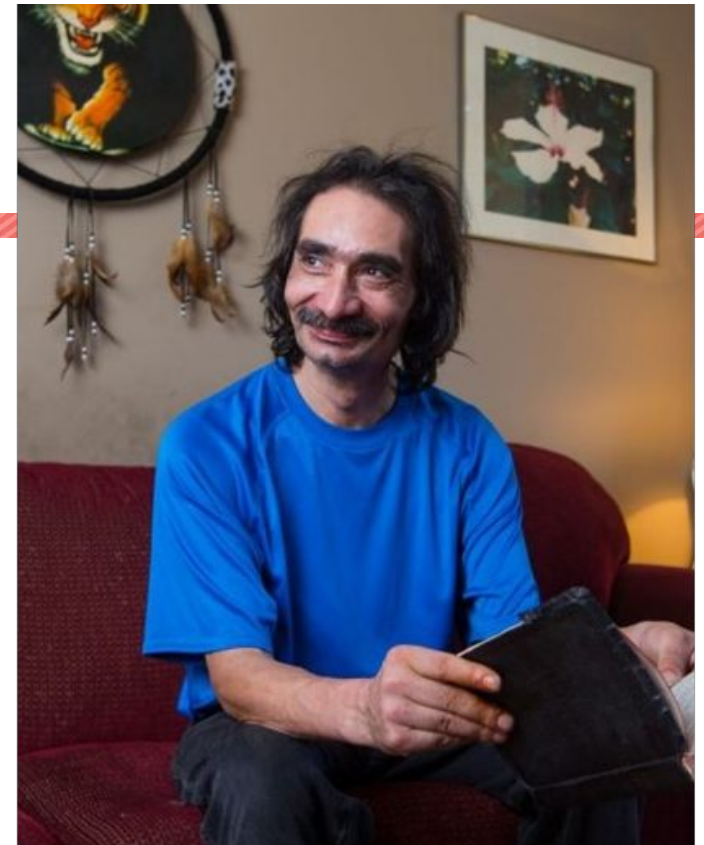
Recovery orientation.



Individualized and client-driven supports.



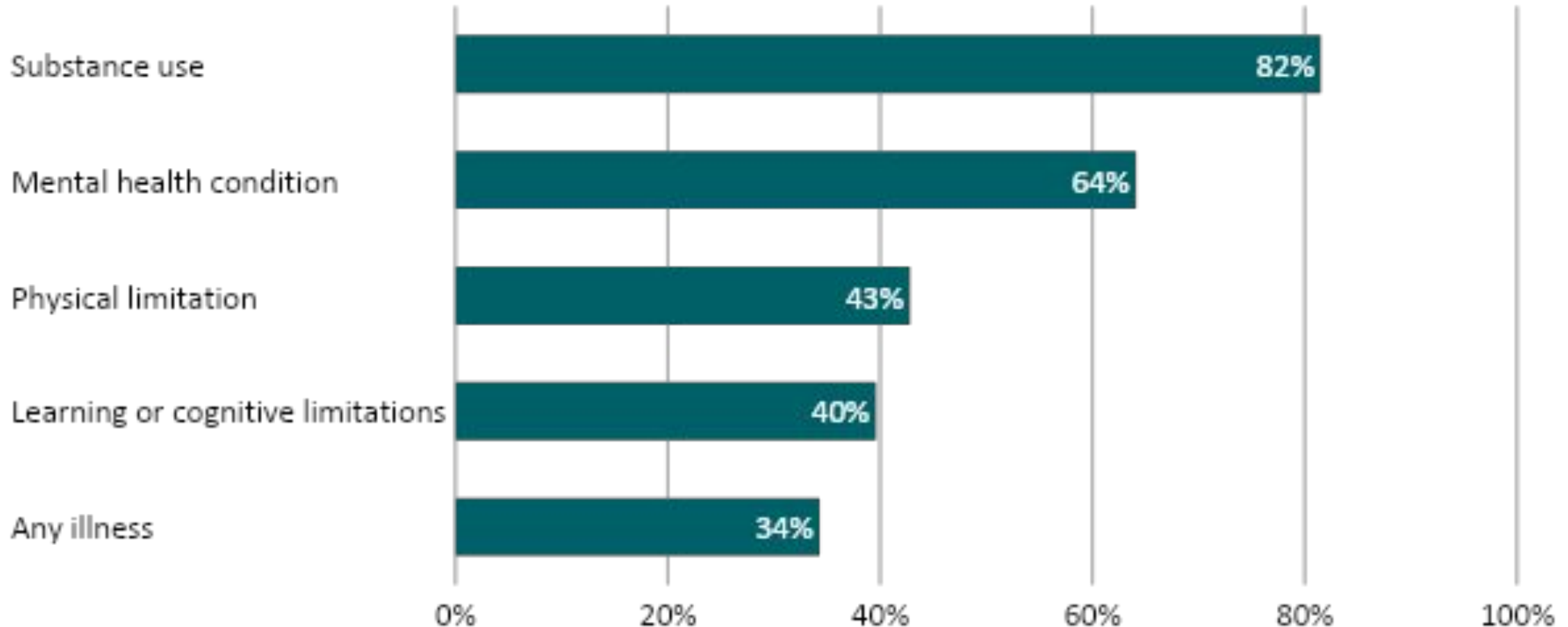
Social and community integration.



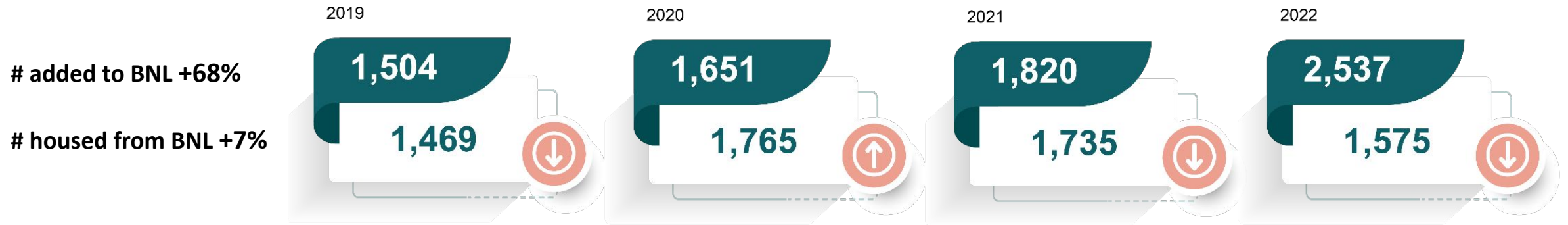
Housing First Participant

# Increasing Complexity of Health Needs

Current Health Challenges, Percent of Survey Responses (n=579)  
Edmonton, PiT 2022



# Impacts on the System



# Opportunity Areas

---

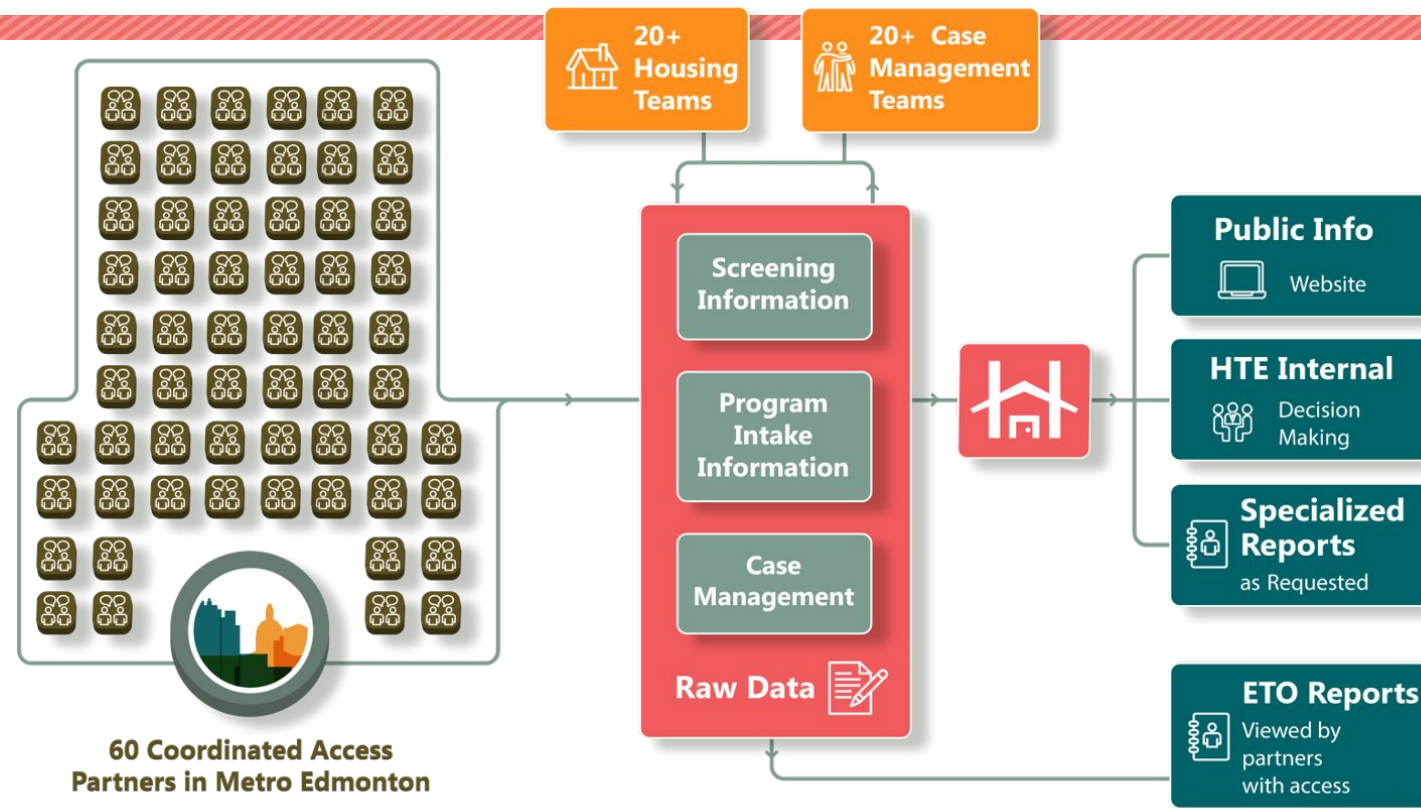
- The systems that intersect and interact with homelessness must be better integrated and aligned
- Continuing the rapid development of supportive housing and developing new targets to account for the increasing complexity of need in the local population experiencing homelessness
- The continued implementation of the wrap around supports that come through Housing First

# Updated Community Plan Underway

---

- Rooted in Lived and Living Experience engagement to reflect the needs of community members who are unhoused
- Will enhance existing governance structures to reorient the system back to a proactive planning space

# Evaluation and Accountability



- \$21.6K on average to house an individual through Housing First
- Other program review analysis that speaks to the efficiency of HF and system planning approach

# Thank You!

---

Susan McGee

CEO

Homeward Trust

smcgee@homewardtrust.ca

[homewardtrust.ca](http://homewardtrust.ca) | [@homewardtrust](https://www.instagram.com/homewardtrust)

