



# ITEM 3.14 CHARTER BYLAW 19378

## EMPIRE PARK

DEVELOPMENT  
SERVICES  
August 18, 2020

Edmonton



# Site



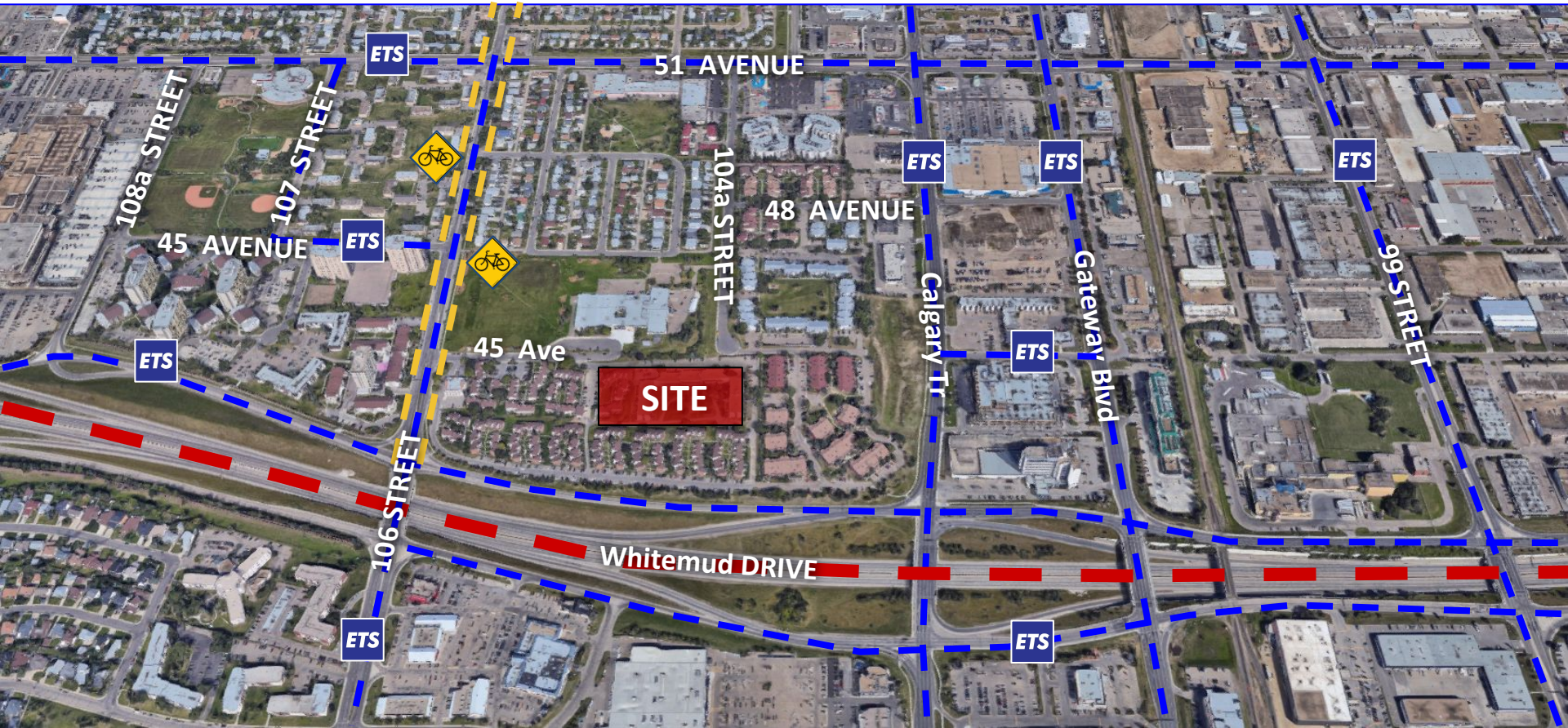


# SITE CONTEXT



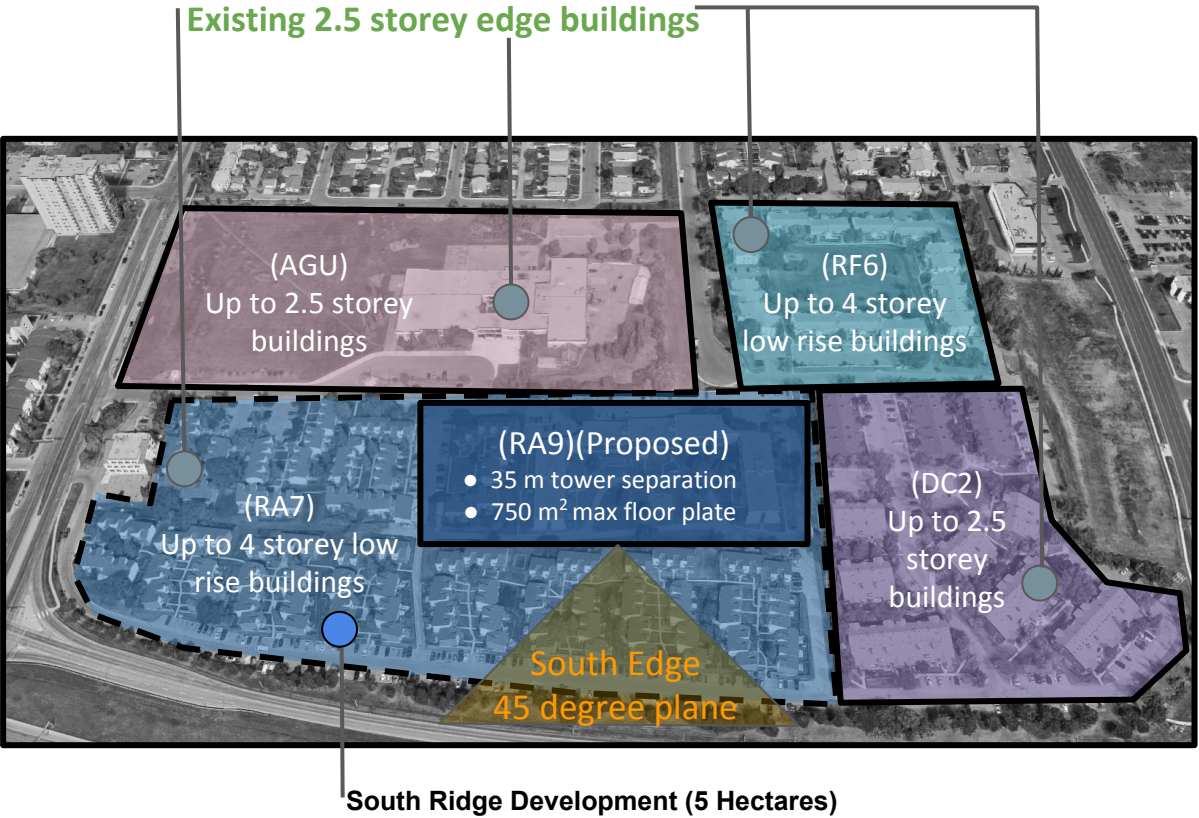
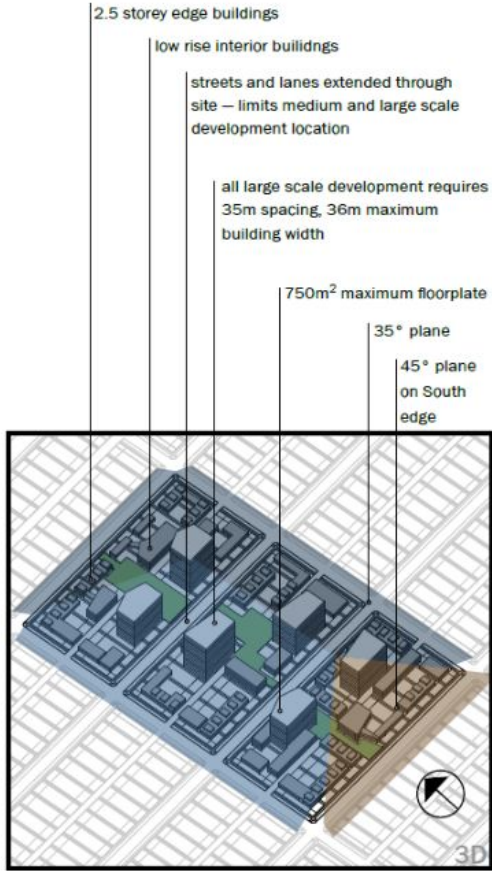


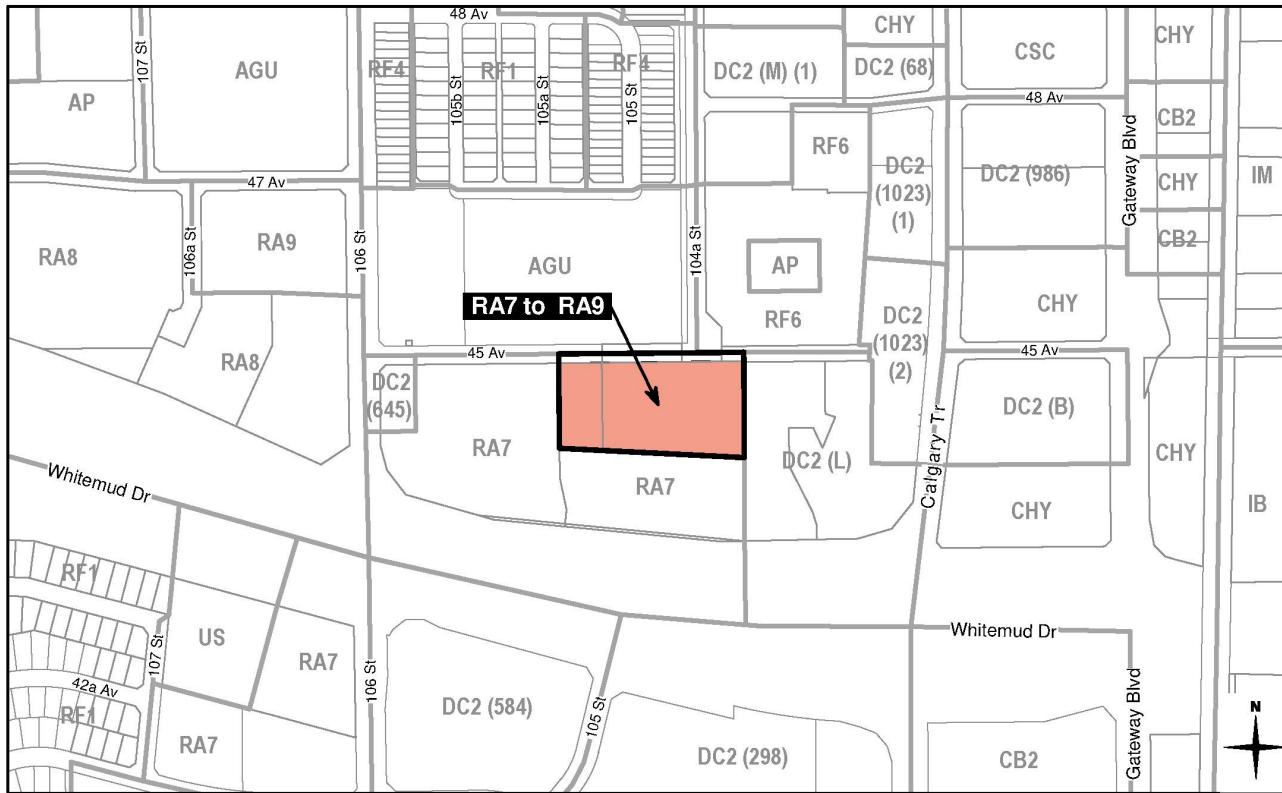
# SITE CONTEXT





# Residential Infill Guidelines





ADMINISTRATION'S RECOMMENDATION: **APPROVAL**