

Applicability of Policy C542 to Lands in the North Saskatchewan River Valley Area Redevelopment Plan

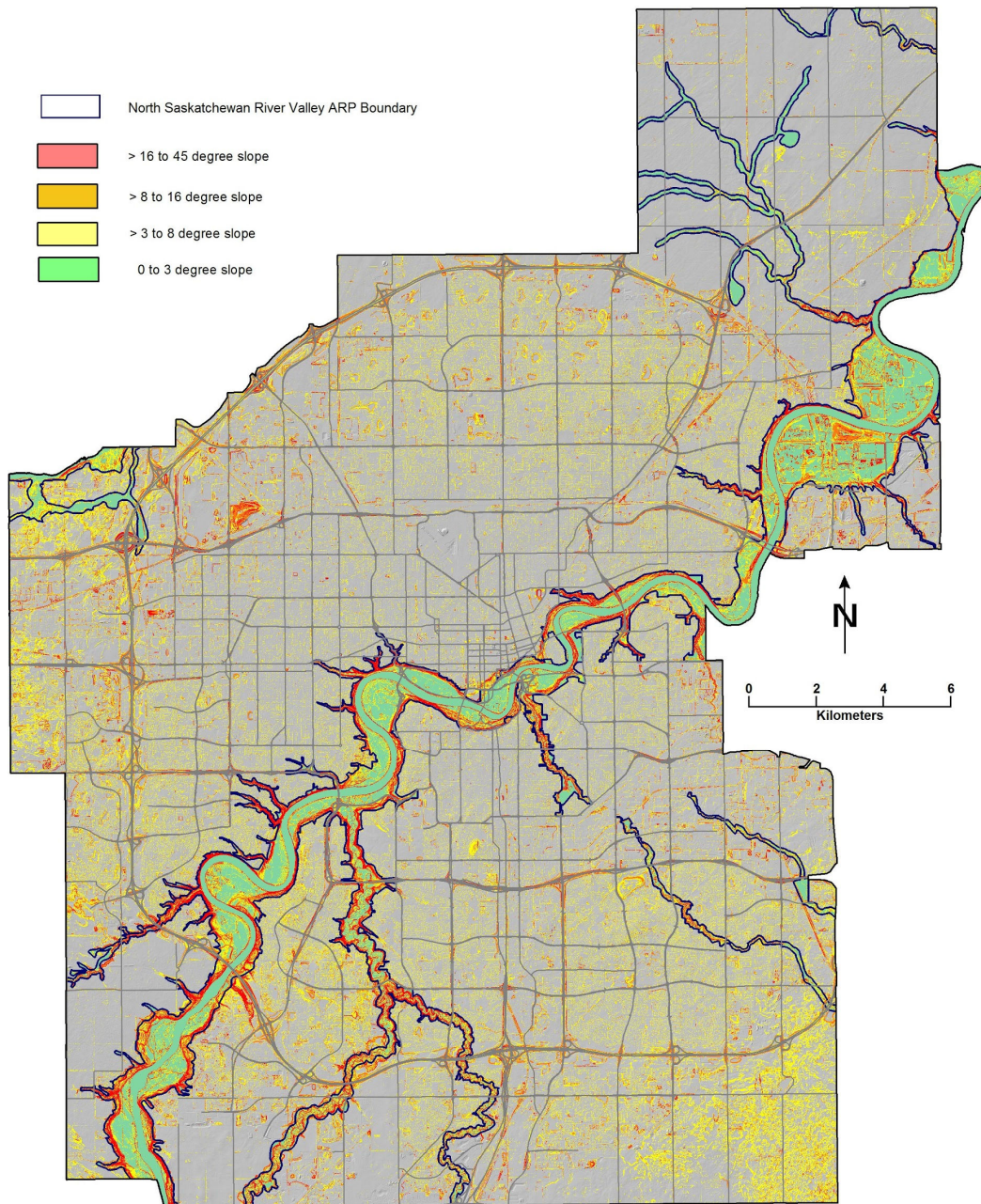
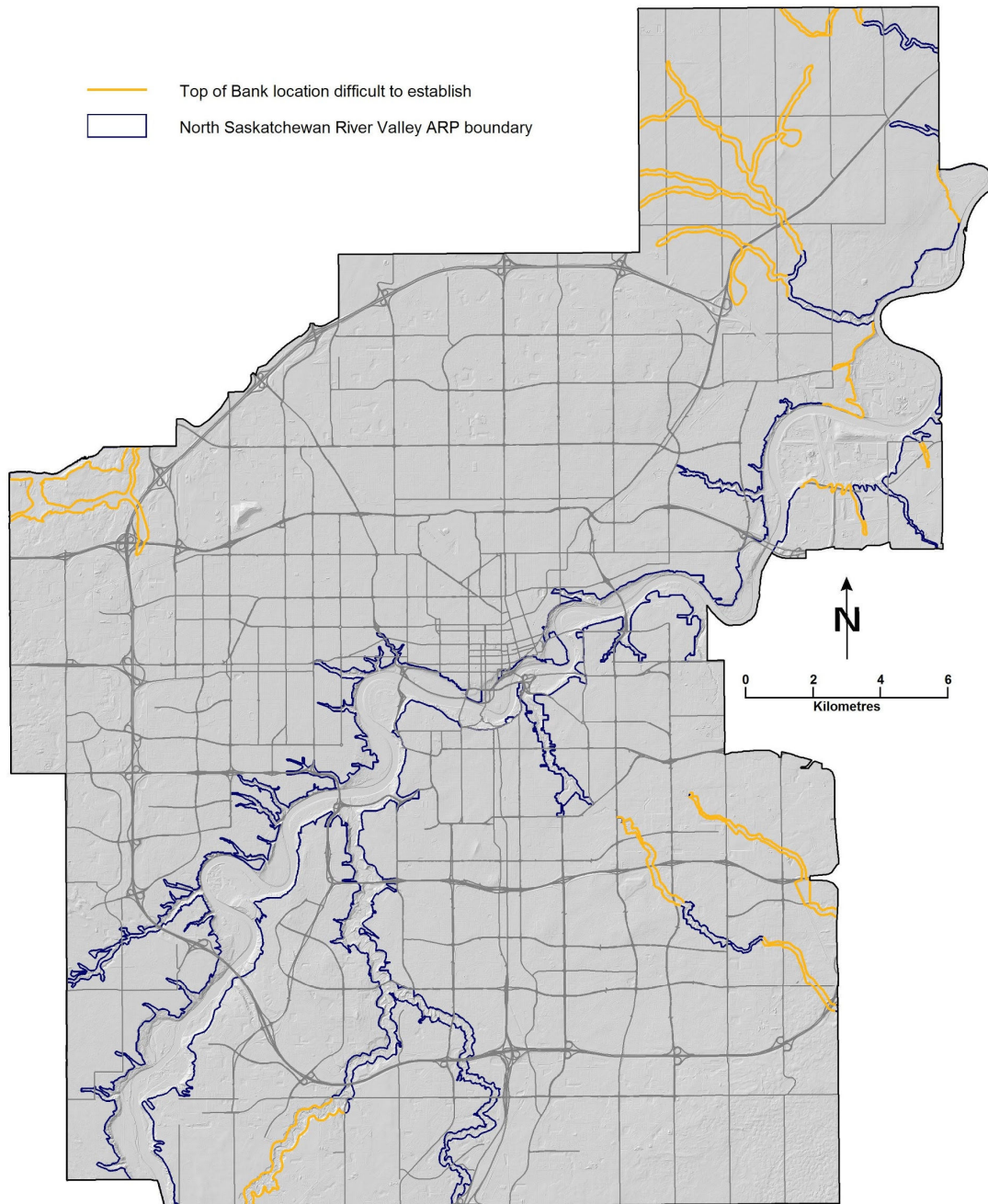


Figure 1. Topography within the River Valley and Ravine System. The top of bank line, or ravine crest, is relatively apparent where steep slopes predominate, but becomes

Attachment 2

more difficult to establish in upstream portions of creeks and streams flowing into the North Saskatchewan River.



Attachment 2

Figure 2. Portions of the River Valley and Ravine system where the location of the Top of Bank line is difficult to establish due to gradual slopes and the presence of terrace features.

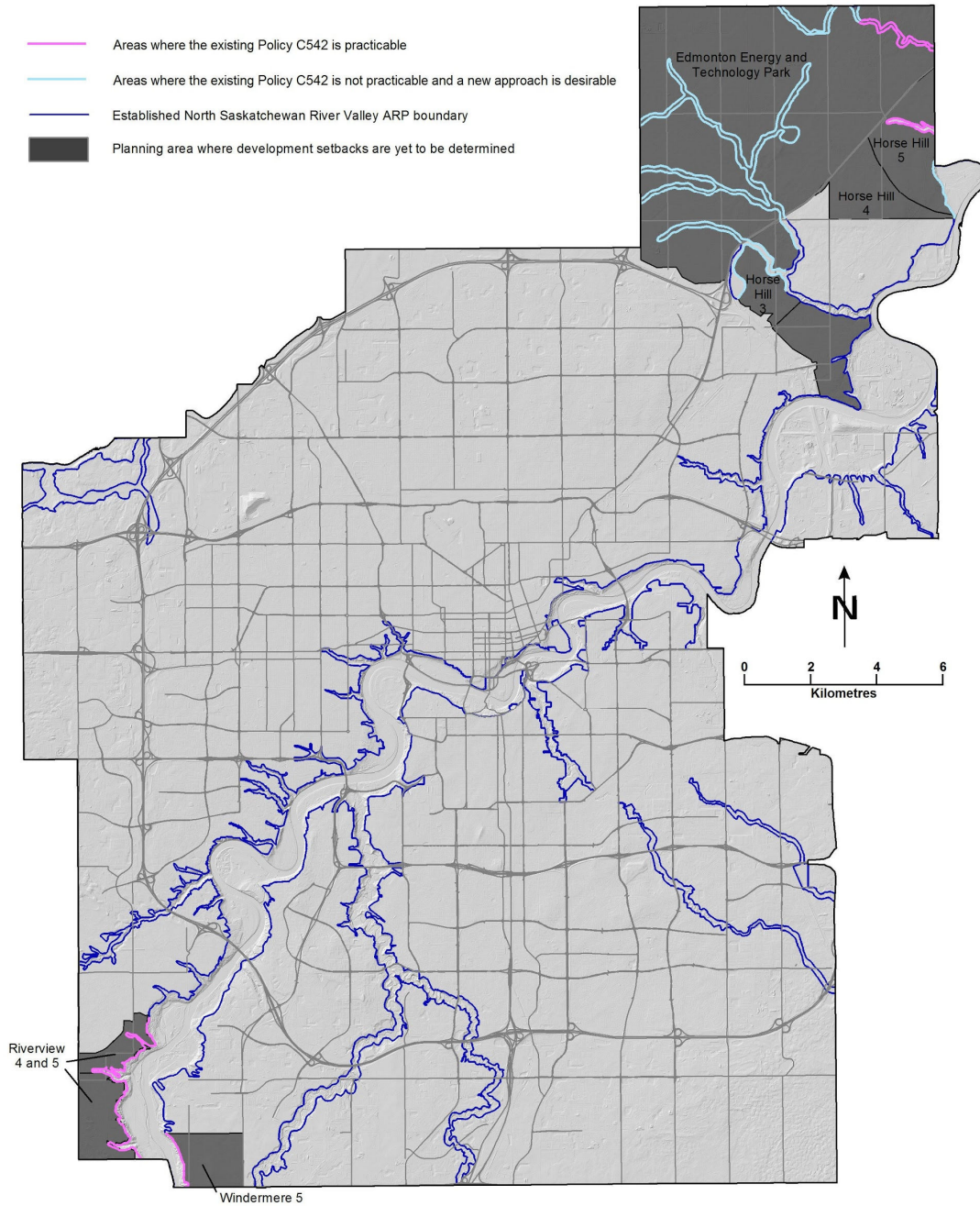


Figure 3. Future planning areas to which existing Policy C542 procedures or the multifunctional setback model may be applied.

Data Sources

LiDAR hillshade (background): City of Edmonton, based on Airborne Imaging LiDAR (Nov 2015)

Slope analysis: Solstice Canada, based on Airborne Imaging multi-year LiDAR (Nov 2012 - Nov 2014)

Base data: City of Edmonton SLIM database.