



Retain Wetland 11 — Kinglet Gardens



Wetland 11



Caption

Kinglet Gardens is in Big Lake Area

“Big Lake is considered one of the 20 most important areas for birds in Alberta. It is one of only three birdsfoot deltas in the Province and has been designated an Important Bird Area.”

Much attention has gone into Environmental Reporting for Kinglet Gardens development.

Environmental reports for this land were done in 2014 and 2016. Both reports, done by different consultants, concluded that Wetland 11 should be retained.

2014 Envir Report

“It is understood that this feature [W11] will potentially be retained, as it is part of the deciduous shelterbelt of trees [wildlife corridor] along the south Property boundary.”

2016 Envir Report

“The following features are recommended for retention/incorporation for the recommended ecological network :

Stepping stones W7 W11 W40

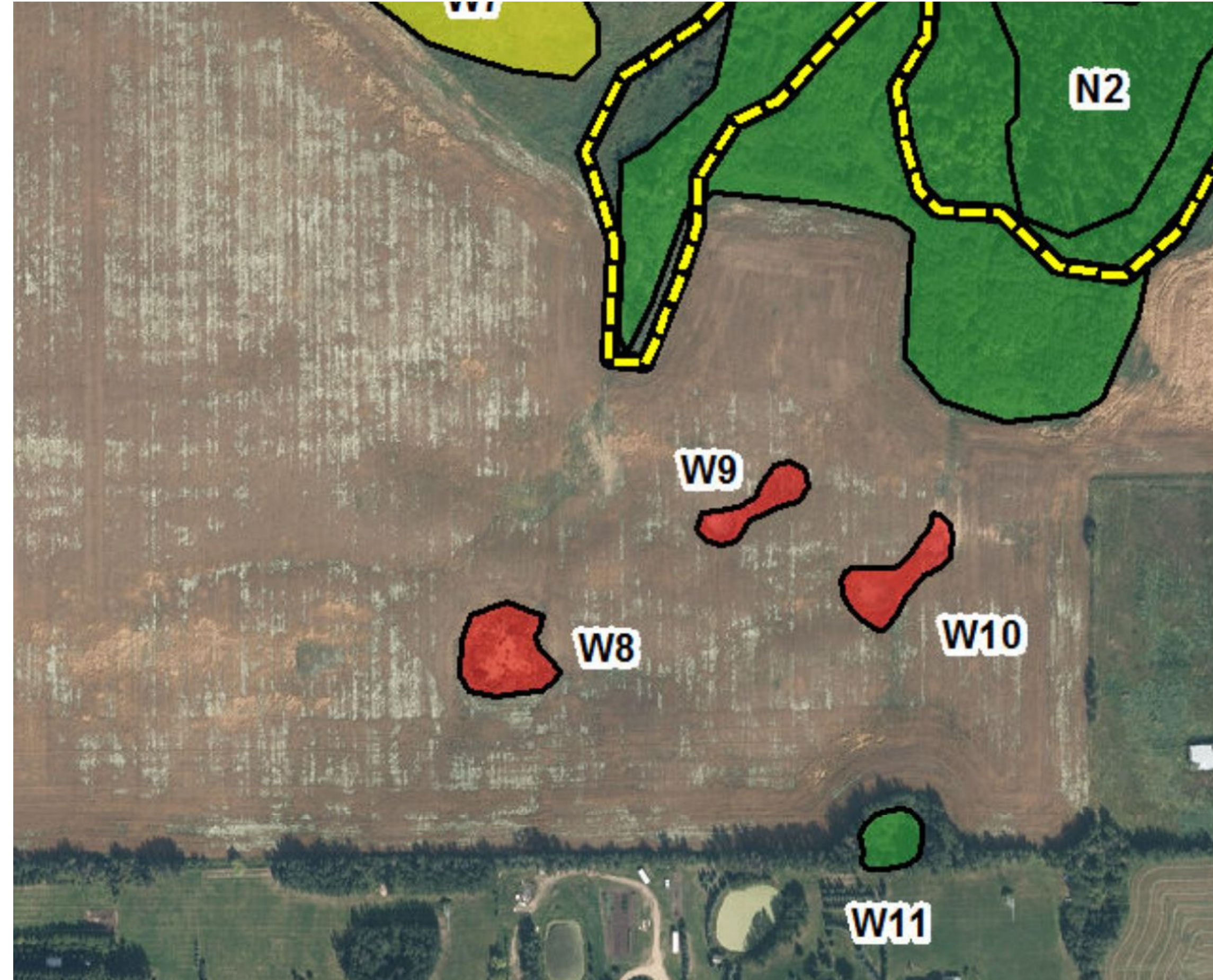
The post-development ecological network incorporated/retained the following features:

Wetlands W11 and W43”

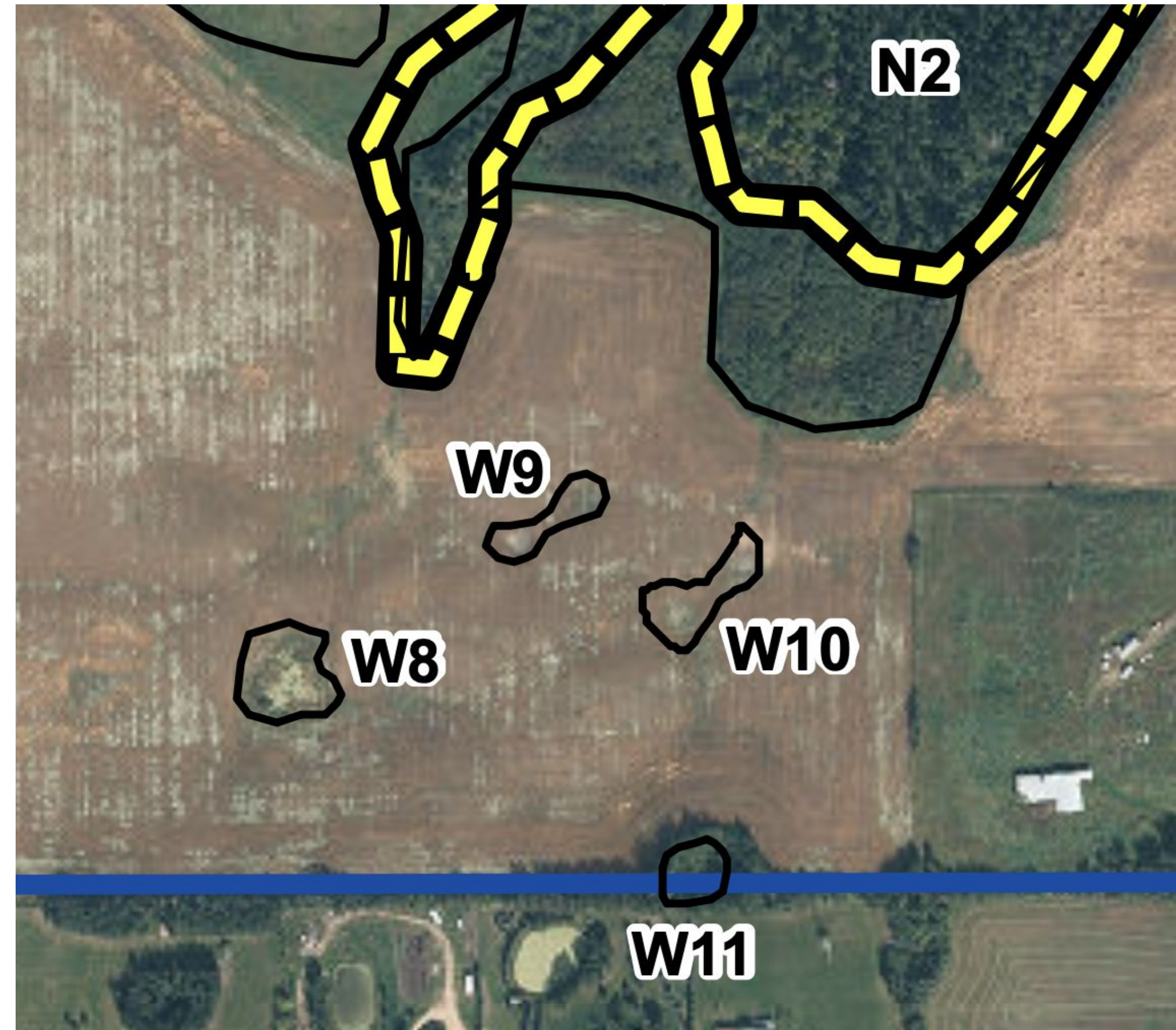
W11 is a seasonal pond and a Class III natural feature

W7	Temporary Pond	0.96	II
W8	Seasonal Pond	0.20	III
W9	Temporary Pond	0.10	II
W10	Temporary Pond	0.14	II
W11	Seasonal Pond	0.07	III
W12	Temporary Pond	0.09	II
W13	Temporary Pond	0.27	II
W14	Temporary Pond	0.13	II
W15	Seasonal Pond	0.17	III
W16	Semipermanent Pond	0.03	IV

Nearby ponds have been removed (red)



W11 is a stepping stone to N2



connectivity: W11 (right) reaches out towards N2 (left)



Caption

W11 supports mixed aspen forest...



Caption

cattail



deer



smaller animals



Conclusion

- Kinglet Garden is an environmentally sensitive area
- 2014 and 2016 reports both say keep W11
- W11 is part of a tree line shelter belt
- W11 supports healthy trees, shrubs and wetland life
- W11 is visited by animals and birds
- W11 is located at a key north-south wildlife connection point
- Preserve nature based solutions
- W11 should be retained