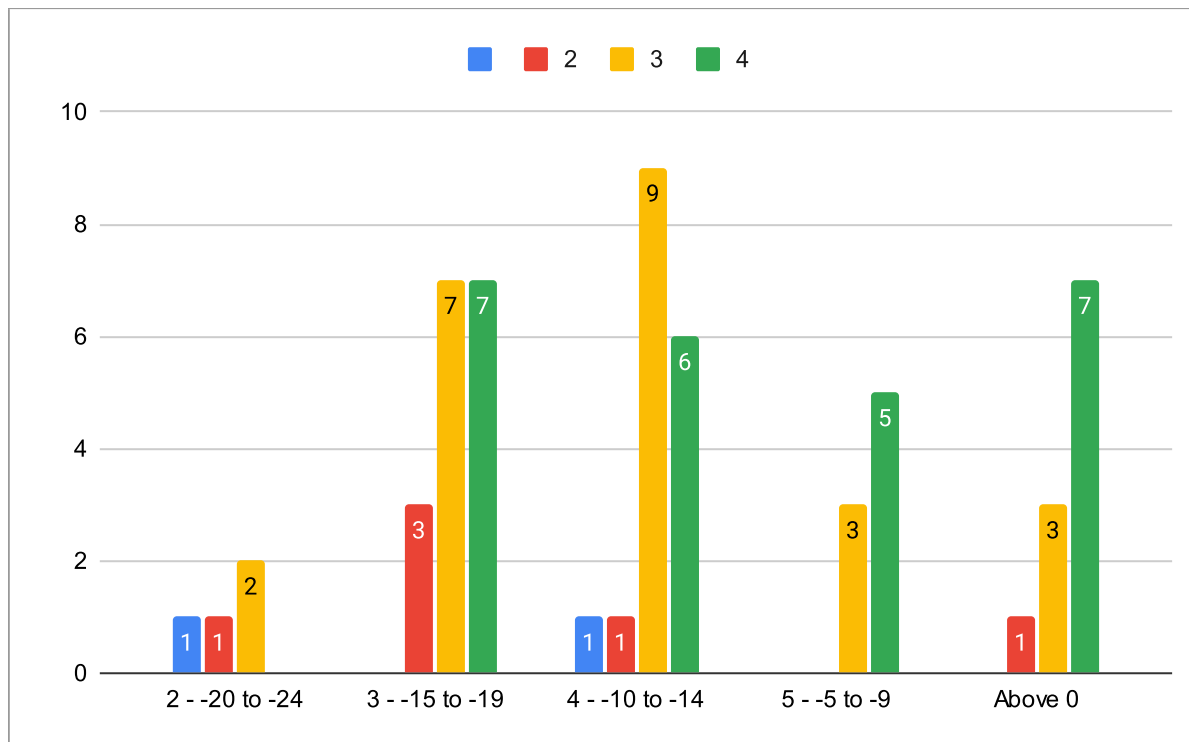


# Collected Data from the Winter Mobility and Accessibility Sub-committee During January to March 2023

Timestamp	Advisory Board Member	Date of transit trip	Time of day	Specific time at the start of the trip	Length of trip to the transit stop	Type of transit stop	Temperature during your trip	What kind of commute? (Overall, how was your commute?)	Overall, how was your commute?
24/01/2023 11:53:53	GG	14/01/2023	9:30am	12:15:00	11-15 mins	2 Bus Stop	-10	Regular work commute (c)	2 Bus Stop - I had enough energy for the length of the commute. The transit stop was accessible without any obstacles.
24/01/2023 11:16:10	GG	15/01/2023	9:30am-3:00pm	11:30:00	Heading to a destination f	2 Bus Stop	-10	Errand (groceries, appoint)	3 The path (not including the transit stop) was difficult to walk on due to wetness. I wasn't able to take a photo. But in this instance the issue is the raised wooden platform is actually very nice as it didn't have snow on it.
24/01/2023 11:17:08	GG	15/01/2023	9:30am-3:00pm	12:45:00	Heading home from a local	1 Bus Stop	-10	Errand (groceries, appoint)	5 I had enough energy for the length of the commute. The path (not including the transit stop) was accessible without too many difficulties. The transit stop was accessible without any obstacles. The transit stop had heating elements or the
26/01/2023 08:37:43	EB	26/01/2023	6:00am-9:30am (rush hou	08:00:00	Heading home from a local	2 Bus Stop	-5	Regular work commute (c)	4 I had enough energy for the length of the commute. The path (not including the transit stop) was accessible without too many difficulties. The transit stop was accessible without any obstacles.
31/01/2023 07:52:56	EB	31/01/2023	6:00am-9:30am (rush hou	07:50:00	Heading to a destination f	2 Bus Stop	-11	Regular work commute (c)	4 The transit stop had no hi I had enough energy for the length of the commute. Long bus stop, and drivers stop at inconsistent places (eg some near back of stop and some at front), hard to predict where to stand.
31/01/2023 17:03:23	GG	31/01/2023	3:00pm-6:30pm (rush hou	16:15:00	Heading home from a local	1 Transit Centre (not service)	-10	Regular work commute (c)	5 I had enough energy for the length of the commute. The path (not including the transit stop) was accessible without too many difficulties. The transit stop was accessible without any obstacles
01/02/2023 08:15:43	GG	01/02/2023	6:00am-9:30am (rush hou	07:50:00	Heading to a destination f	2 Bus Stop	-15	Regular work commute (c)	4 I had enough energy for the length of the commute. When arriving at CN, the bus pulled in too far from curb. Snow made it difficult to see curb and one person fell getting off bus.
02/02/2023 15:45:22	GG	31/01/2023	3:00pm-6:30pm (rush hou	05:30:00	Heading to a destination f	2 Bus Stop	-15	Occasional leisure/errands	3 I had enough energy for the length of the commute. The transit stop was accessible without any obstacles
02/02/2023 15:48:21	GG	31/01/2023	6:30pm-10:00pm	08:15:00	Heading to a destination f	3 Transit Centre (not service)	-15	Occasional leisure/errands	4 I had enough energy for the length of the commute. The path (not including the transit stop) was accessible without too many difficulties.
02/02/2023 15:49:31	GG	01/02/2023	6:00am-9:30am (rush hou	08:15:00	Heading to a destination f	2 Bus Stop	-20	Errand (groceries, appoint)	3 The transit stop was difficult to get around (snow or other environmental factors). The transit stop had no heating elements or shelters to shield me from cold temperatures or snow
02/02/2023 15:51:31	GG	01/02/2023	9:30am-3:00pm	10:30:00	Heading home from a local	3 LRT Station, but catching	-22	Errand (groceries, appoint)	2 It was just a bit far for my comfort that day. 10 minutes with very sharp cold temperature was unpleasant, despite the fact that the walk was straightforward.
05/02/2023 21:20:19	ST	03/02/2023	6:00am-9:30am (rush hou	07:20:00	Heading to a destination f	2 LRT Station, but catching 6 Celsius	No	Regular Leisure/Errand	4 The doorway to the LRT the path (not including the transit stop) was accessible without too many difficulties
06/02/2023 09:02:54	ZJ	31/01/2023	6:00am-9:30am (rush hou	07:30:00	Heading to a destination f	5 Bus Stop	-25	Occasional work commute	5 I had enough energy for the length of the commute. The path (not including the transit stop) was accessible without too many difficulties. The transit stop had heating elements or the
06/02/2023 11:22:38	ZJ	01/02/2023	6:00am-9:30am (rush hou	07:25:00	Heading to a destination f	5 Bus Stop	-24	Regular work commute (c)	4 I had enough energy for the length of the commute. The LRT was crowded
06/02/2023 09:47:28	ST	06/02/2023	9:30am-3:00pm	02:30:00	Heading to a destination f	1 Bus Stop	4 degrees Celsius	Occasional work commute	5 The path (not including the transit stop) was accessible without too many difficulties. The transit stop was accessible without any obstacles. It is a high foot traffic area, so it's not a surprise that it's easily walkable.
08/02/2023 20:37:31	GG	08/02/2023	9:30am-3:00pm	01:15:00	Heading to a destination f	1 Bus Stop	-4	Errand (groceries, appoint)	4 I had enough energy for the length of the commute. The sidewalk part is fine, the parking lot in my apartment/house complex was the slightly tricky part because of the recent snowfall and it wasn't plowed yet. Manageable for an ab
08/02/2023 20:40:00	GG	08/02/2023	9:30am-3:00pm	02:14:00	Heading to a destination v	1 Bus Stop	4	Occasional work commute	3 Intersections on my comm I had enough energy for the length of the commute. The path (not including the transit stop) was accessible without too many difficulties. The transit stop was accessible without any obstacles. The transit stop had heating elements or the
08/02/2023 20:40:47	GG	08/02/2023	9:30am-3:00pm	02:45:00	Heading home from a local	1 Transit Centre (not service)	5	Occasional work commute	5 I had enough energy for the length of the commute. The path (not including the transit stop) was accessible without too many difficulties. The transit stop was accessible without any obstacles.
11/02/2023 08:47:24	GG	11/02/2023	9:30am-3:00pm	10:30:00	Heading to a destination f	1 Bus Stop	6	Occasional work commute	4 The path (not including th I had enough energy for the length of the commute. My origin point and the bus stop were along major roads and close to downtown (102 Ave, 104 Ave, 124 Street) so I'm glad (and not surprised) that the travel to the bus stop was easy.
12/02/2023 08:50:40	GG	11/02/2023	9:30am-3:00pm	12:55:00	Heading to a destination v	2 Bus Stop	5	Occasional work commute	5 I had enough energy for the length of the commute. The path (not including the transit stop) was accessible without too many difficulties. The transit stop was accessible without any obstacles. The transit stop had heating elements or the
13/02/2023 17:21:59	GG	14/02/2023	3:00pm-6:30pm (rush hou	03:30:00	Heading to a destination f	1 Bus Stop	4	Errand (groceries, appoint)	5 I had enough energy for the length of the commute. The path (not including the transit stop) was accessible without too many difficulties. The transit stop was accessible without any obstacles.
13/02/2023 17:23:01	GG	13/02/2023	3:00pm-6:30pm (rush hou	10:00:00	Heading home from a local	1 Transit Centre (not service)	5	Errand (groceries, appoint)	5 I had enough energy for the length of the commute. The path (not including the transit stop) was accessible without too many difficulties. The transit stop had heating elements or the
18/02/2023 13:40:23	GG	16/02/2023	3:00pm-6:30pm (rush hou	04:05:00	Heading to a destination v	2 Transit Centre (not service)	-4	Occasional work commute	5 I had enough energy for the length of the commute. This is the large transit stop near Jasper Ave and MacDonald Drive, along 100 Street. The shelter is still there but I looked abandoned and sketchy inside. Because of that, I will only use
18/02/2023 13:43:31	GG	16/02/2023	3:00pm-6:30pm (rush hou	03:25:00	Heading to a destination f	2 Bus Stop	No	Occasional work commute	4 The path (not including the transit stop) was accessible without too many difficulties. The transit stop had heating elements or shelters to shield me from the cold temperatures or snow
21/02/2023 07:38:56	GG	21/02/2023	6:00am-9:30am (rush hou	07:33:00	Heading to a destination f	1 Bus Stop	-18	Regular work commute (c)	5 I had enough energy for the length of the commute. Given the good quality of snow clearing and the gravel placed on the sidewalk by the construction zone portion of my walk, it's safe to say that it is not the only who did this, but rather it
21/02/2023 21:26:24	GG	21/02/2023	3:00pm-6:30pm (rush hou	04:50:00	Heading home from a local	1 Bus Stop	-18	Regular work commute (c)	3 The transit stop had no hi I had enough energy for the length of the commute. The path (not including the transit stop) was accessible without too many difficulties. The transit stop was accessible without any obstacles.
22/02/2023 07:45:16	GG	22/02/2023	6:00am-9:30am (rush hou	07:42:00	Heading to a destination f	1 Bus Stop	-26	Regular work commute (c)	4 The transit stop had no hi I had enough energy for the length of the commute. Personally my most ideal situation is clear pavement but of the ice is relatively flat (so wheelchair users won't struggle) and is practically covered in gravel, that's OK too. But it would be
22/02/2023 21:31:57	GG	22/02/2023	3:00pm-6:30pm (rush hou	04:40:00	Heading home from a local	1 LRT Station	-25	Regular work commute (c)	5 It's an area with lots of businesses and office buildings so I understand how that stretch of 108 is clearing to the Leg building is clear of snow. I will use the same for all areas of the city.
23/02/2023 07:44:52	GG	23/02/2023	6:00am-9:30am (rush hou	07:40:00	Heading to a destination f	2 Bus Stop	-25	Regular work commute (c)	4 The transit stop had no hi The path (not including th I had enough energy for the length of the commute. The snowfall was just a sprinkle so not enough to cause issues, but enough to hide ice that has not been cleared before. Since I knew from yesterday that the path is cleared, I know I
24/02/2023 07:53:18	EB	24/02/2023	6:00am-9:30am (rush hou	07:55:00	Heading to a destination f	2 Bus Stop	-25	Unsure	3 My energy levels were low. The transit stop was accessible without any obstacles.
24/02/2023 07:54:30	GG	23/02/2023	3:00pm-6:30pm (rush hou	16:15:00	Heading home from a local	1 Transit Centre (not service)	-25	Regular work commute (c)	5 I had enough energy for the length of the commute. The path (not including the transit stop) was accessible without too many difficulties. The transit stop was accessible without any obstacles
24/02/2023 07:55:50	EB	24/02/2023	6:00am-9:30am (rush hou	07:50:00	Heading to a destination f	2 Bus Stop	-25	Regular work commute (c)	4 The path (not including th I had enough energy for the length of the commute. The transit stop was accessible without any obstacles.
24/02/2023 07:57:21	GG	23/02/2023	3:00pm-6:30pm (rush hou	04:45:00	Heading home from a local	1 Bus Stop	-23	Regular work commute (c)	5 The transit stop had no hi I had enough energy for the length of the commute. The path (not including the transit stop) was accessible without too many difficulties. The transit stop was accessible without any obstacles
24/02/2023 07:58:29	GG	24/02/2023	6:00am-9:30am (rush hou	07:30:00	Heading to a destination f	2 Bus Stop	-28	Regular work commute (c)	3 The transit stop had no hi I had enough energy for the length of the commute. Getting off bus, too many buses at the transit hou. Bus stopped on curve, so door was not by curb. Large step down to my road.
24/02/2023 16:24:52	GG	24/02/2023	3:00pm-6:30pm (rush hou	04:22:00	Heading home from a local	1 LRT Station	-28	Regular work commute (c)	5 The transit stop had no hi I had enough energy for the length of the commute. In this case the "door" starting point is the LRT vehicle as I left to catch a connecting bus. It's a short and safe connection from the LRT station to the bus stop.
25/02/2023 12:02:11	GG	25/02/2023	9:30am-3:00pm	12:00:00	Heading to a destination f	1 Bus Stop	-11	Occasional leisure/errands	5 I had enough energy for the length of the commute. The path (not including the transit stop) was accessible without too many difficulties. The transit stop was accessible without any obstacles.
25/02/2023 17:37:54	GG	25/02/2023	3:00pm-6:30pm (rush hou	05:25:00	Heading home from a local	2 Bus Stop	-8	Occasional leisure/errands	4 I had enough energy for the length of the commute. The path (not including the transit stop) was accessible without too many difficulties. The transit stop was accessible without any obstacles. The transit stop had heating elements or the
27/02/2023 07:36:05	GG	27/02/2023	6:00am-9:30am (rush hou	07:30:00	Heading to a destination f	2 Bus Stop	-13	Regular work commute (c)	5 I had enough energy for the length of the commute. The path (not including the transit stop) was accessible without too many difficulties. The transit stop was accessible without any obstacles. The transit stop had heating elements or the
27/02/2023 08:30:35	EB	27/02/2023	6:00am-9:30am (rush hou	07:30:00	Heading to a destination f	2 Bus Stop	-10	Regular work commute (c)	4 The transit stop had no hi I had enough energy for the length of the commute. Getting off bus, too many buses at the transit hou. Bus stopped on curve, so door was not by curb. Large step down to my road.
27/02/2023 16:36:41	GG	27/02/2023	3:00pm-6:30pm (rush hou	04:30:00	Heading home from a local	1 Bus Stop	-6	Unsure	5 I had enough energy for the length of the commute. The path (not including the transit stop) was accessible without too many difficulties. The transit stop was accessible without any obstacles.
27/02/2023 18:09:47	EB	27/02/2023	3:00pm-6:30pm (rush hou	16:00:00	Heading home from a local	1 Transit Centre (not service)	-5	Regular work commute (c)	5 The transit stop had no hi I had enough energy for the length of the commute. The path (not including the transit stop) was accessible without too many difficulties. The transit stop was accessible without any obstacles.
28/02/2023 07:37:19	GG	28/02/2023	6:00am-9:30am (rush hou	07:28:00	Heading to a destination f	1 Bus Stop	-16	Regular work commute (c)	5 I had enough energy for the length of the commute. People are interesting LOL. This photo is a man-made detour through a construction zone because it cuts the walking time to the bus stop by more than half. It's definitely use at your o
28/02/2023 17:48:57	GG	28/02/2023	3:00pm-6:30pm (rush hou	04:35:00	Heading home from a local	1 LRT Station	-10	Regular work commute (c)	5 I had enough energy for the length of the commute. Getting into and also the stairwell was cleared of snow. It was a good experience getting in and even the connection at South Campus LRT.
28/02/2023 18:41:46	GG	28/02/2023	6:30pm-10:00pm	08:30:00	Heading to a destination f	1 Bus Stop	-10	Occasional leisure/errands	5 I had enough energy for the length of the commute. The path (not including the transit stop) was accessible without too many difficulties. The transit stop was accessible without any obstacles.
28/02/2023 20:08:34	GG	28/02/2023	6:30pm-10:00pm	08:05:00	Heading home from a local	1 Bus Stop	-12	Occasional leisure/errands	4 The path (not including the transit stop) was difficult. <a href="https://drive.google.com/file/d/1vrbndf0c9e9u8B_EhUjL8eGz7d9uub/view?usp=sharing">https://drive.google.com/file/d/1vrbndf0c9e9u8B_EhUjL8eGz7d9uub/view?usp=sharing</a>
01/03/2023 07:35:56	GG	01/03/2023	6:00am-9:30am (rush hou	07:28:00	Heading to a destination f	1 Bus Stop	-13	Regular work commute (c)	4 The path (not including th I had enough energy for the length of the commute. The transit stop was accessible without any obstacles.
01/03/2023 22:23:10	ST	12/02/2023	9:30am-3:00pm	12:00:00	Heading to a destination f	1 LRT Station	-5 C (not cold)	Occasional work commute	4 I had enough energy for the length of the commute. The path (not including the transit stop) was accessible without too many difficulties. The transit stop had heating elements or shelters to shield me from the cold temperatures or snow
01/03/2023 22:25:42	ST	15/03/2023	3:00pm-6:30pm (rush hou	03:45:00	Heading to a destination f	1 LRT Station	No	Regular work commute (c)	4 I think there was someone. The path (not including the transit stop) was accessible without too many difficulties.
01/03/2023 22:29:07	ST	23/03/2023	9:30am-3:00pm	07:50:00	Heading to a destination v	2 Bus Stop	-19 C	Occasional work commute	4 The path (not including the transit stop) was difficult to walk on due to wetness. I realized that I wanted to record the path from getting off the bus to my destination, but my form does not account for this kind of trip. My bad! Cold, icy sidewalks in a more industrial ar
01/03/2023 22:41:01	ST	23/03/2023	9:30am-3:00pm	10:10:00	Heading to a destination f	1 LRT Station	-18C	Errand (groceries, appoint)	3 Intersections on my commute were difficult or inacc <a href="https://drive.google.com/file/d/1U0Uu_C45GyGyGPRMjM5asst_wvW8bme/view?usp=sharing">https://drive.google.com/file/d/1U0Uu_C45GyGyGPRMjM5asst_wvW8bme/view?usp=sharing</a>
01/03/2023 22:44:37	ST	23/03/2023	9:30am-3:00pm	10:20:00	Heading to a destination f	1 Bus Stop	-12C	Occasional work commute	2 The path (not including the transit stop) was difficult to walk on due to wetness. This was a unique day where I was rolling around a suitcase which simulated needing to get around with a piece of equipment/body aid/stroller. The pebbles used to prevent slipping
02/03/2023 07:30:57	GG	02/03/2023	6:00am-9:30am (rush hou	07:28:00	Heading to a destination f	1 Bus Stop	-6	Regular work commute (c)	5 I had enough energy for the length of the commute. The path (not including the transit stop) was accessible without too many difficulties. The transit stop was accessible without any obstacles.
02/03/2023 15:54:42	GG	02/03/2023	3:00pm-6:30pm (rush hou	04:30:00	Heading home from a local	1 Bus Stop	-4	Unsure	5 I had enough energy for the length of the commute. The path (not including the transit stop) was accessible without too many difficulties. The transit stop was accessible without any obstacles.
03/03/2023 07:36:31	GG	03/03/2023	6:00am-9:30am (rush hou	07:35:00	Heading to a destination f	1 Bus Stop	-7	Regular work commute (c)	5 I had enough energy for the length of the commute. Because it was cleared to the pavement before, when there was a light snowfall that melted quickly, the sidewalks became bare pavement again making it safe.
04/03/2023 11:10:43	GG	04/03/2023	9:30am-3:00pm	10:45:00	Heading home from a local	1 Bus Stop	-12	Errand (groceries, appoint)	4 The transit stop was diffic I had enough energy for the length of the commute. The path (not including the transit stop) was accessible without too many difficulties. The transit stop was accessible without any obstacles.
04/03/2023 21:37:08	GG	04/03/2023	6:30pm-10:00pm	09:20:00	Heading home from a local	2 Bus Stop	-9	Occasional leisure/errands	5 I had enough energy for the length of the commute. The path (not including the transit stop) was accessible without too many difficulties. The transit stop was accessible without any obstacles.
05/03/2023 08:38:50	EB	05/03/2023	6:00am-9:30am (rush hou	18:25:00	Heading to a destination f	2 Bus Stop	-10	Occasional leisure/errands	4 The path (not including th I had enough energy for the length of the commute. Some icy spots
05/03/2023 08:40:23	EB	04/03/2023	6:30pm-10:00pm	21:30:00	Heading home from a local	2 Transit Centre (not service)	-14	Occasional leisure/errands	4 I had enough energy for the length of the commute. The path (not including the transit stop) was accessible without too many difficulties. The transit stop was accessible without any obstacles. The transit stop had heating elements or the
06/03/2023 07:35:05	GG	06/03/2023	6:00am-9:30am (rush hou	07:29:00	Heading to a destination f	1 Bus Stop	-16	Regular work commute (c)	4 The transit stop had no hi I had enough energy for the length of the commute. The path (not including the transit stop) was accessible without too many difficulties. The transit stop was accessible without any obstacles.
06/03/2023 07:55:57	EB	06/03/2023	6:00am-9:30am (rush hou	07:50:00	Heading to a destination f	2 Bus Stop	-17	Regular work commute (c)	4 The path (not including th I had enough energy for the length of the commute. The transit stop was accessible without any obstacles.
06/03/2023 18:49:50	GG	06/03/2023	3:00pm-6:30pm (rush hou	04:30:00	Heading home from a local	1 Bus Stop	-13	Regular work commute (c)	4 The transit stop had no hi I had enough energy for the length of the commute. The walk to go home from the bus stop also went smoothly.
06/03/2023 07:49:29	EB	06/03/2023	6:00am-9:30am (rush hou	07:50:00	Heading to a destination f	2 Bus Stop	-19	Regular work commute (c)	4 The transit stop had no hi I had enough energy for the length of the commute. The path (not including the transit stop) was accessible without too many difficulties. The transit stop was accessible without any obstacles.
06/03/2023 07:50:27	EB	06/03/2023	6:00am-9:30am (rush hou	16:20:00	Heading home from a local	1 Transit Centre (not service)	-15	Regular work commute (c)	5 I had enough energy for the length of the commute. The path (not including the transit stop) was accessible without too many difficulties. The transit stop was accessible without any obstacles.
06/03/2023 07:51:28	EB	06/03/2023	6:00am-9:30am (rush hou	07:50:00	Heading to a destination f	2 Bus Stop	-17	Regular work commute (c)	4 The transit stop had no hi I had enough energy for the length of the commute. The path (not including the transit stop) was accessible without too many difficulties. The transit stop was accessible without any obstacles.
06/03/2023 08:06:07	GG	09/03/2023	6:00am-9:30am (rush hou	07:25:00	Heading to a destination f	1 Bus Stop	-18	Regular work commute (c)	5 I had enough energy for the length of the commute. The path (not including the transit stop) was accessible without too many difficulties. The transit stop was accessible without any obstacles.
06/03/2023 08:07:03	GG	06/03/2023	6:30pm-10:00pm	07:48:00	Heading home from a local	2 Transit Centre (not service)	-15	Regular Leisure/Errand	5 I had enough energy for the length of the commute. The path (not including the transit stop) was accessible without too many difficulties. The transit stop was accessible without any obstacles. The transit stop had heating elements or the
10/03/2023 16:26:26	GG	10/03/2023	3:00pm-6:30pm (rush hou	03:10:00	Heading home from a local	2 Bus Stop	-15	Regular work commute (c)	5 The transit stop had no hi I had enough energy for the length of the commute. The path (not including the transit stop) was accessible without too many difficulties. The transit stop was accessible without any obstacles.
14/03/2023 18:46:10	GG	14/03/2023	6:00am-9:30am (rush hou	07:30:00	Heading to a destination f	2 Bus Stop	-15	Regular work commute (c)	5 I had enough energy for the length of the commute. The path (not including the transit stop) was accessible without too many difficulties. The transit stop was accessible without any obstacles.

<b>COUNTA of Advisory Board Member Initials</b> Grouped Temperature during your commute:	<b>Overall, how was your commute from the front door to the transit stop?</b>				
	2	3	4	5	Grand Total
1 - Less than -25		2	3	4	9
2 - -20 to -24	1	1	2		4
3 - -15 to -19		3	7	7	17
4 - -10 to -14	1	1	9	6	17
5 - -5 to -9			3	5	8
Above 0		1	3	7	11
<b>Grand Total</b>	<b>2</b>	<b>8</b>	<b>27</b>	<b>29</b>	<b>66</b>



<i>COUNTA of Advi. Overall, how was your commute from the front door to the transit stop?</i>					
<i>What kind of com</i>	2	3	4	5	Grand Total
Errand (groceries	1	3	2	3	9
Occasional leisure/entertainment c		1	6	3	10
Occasional work	1	1	4	5	11
Regular Leisure/Entertainment commute (gym, weel			1	1	2
Regular work commute (commute		3	16	17	36
<b>Grand Total</b>	<b>2</b>	<b>8</b>	<b>29</b>	<b>29</b>	<b>68</b>

<b>COUNTA of Adv Overall, how was your commute from the front door to the transit stop?</b>					
<i>Has it snowed within the past 24 hrs?</i>	2	3	4	5	Grand Total
No		8.11%	45.95%	45.95%	100.00%
Yes	7.69%	15.38%	42.31%	34.62%	100.00%
<b>Grand Total</b>	<b>2.94%</b>	<b>11.76%</b>	<b>42.65%</b>	<b>42.65%</b>	<b>100.00%</b>

